

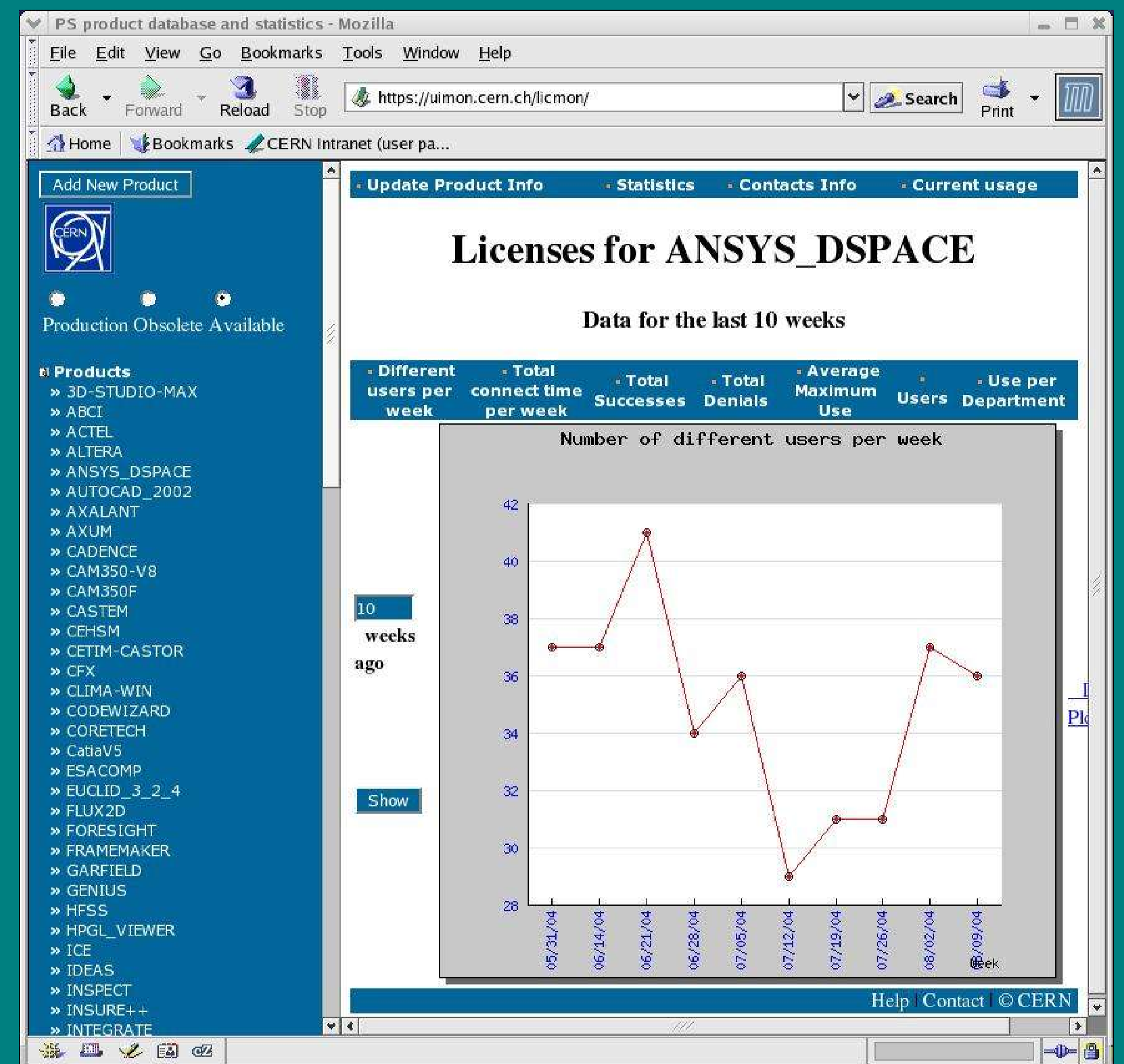
# MANAGING SOFTWARE LICENCES FOR A LARGE RESEARCH LABORATORY

The Product Support (PS) group of the IT department at CERN distributes and supports more than one hundred different software packages, ranging from tools for computer aided design, field calculations, mathematical and structural analysis to software development. Most of these tools, which are used on a variety of Unix and Windows platforms by different user populations, are commercial packages requiring a licence. The group is also charged with license negotiations with the software vendors.

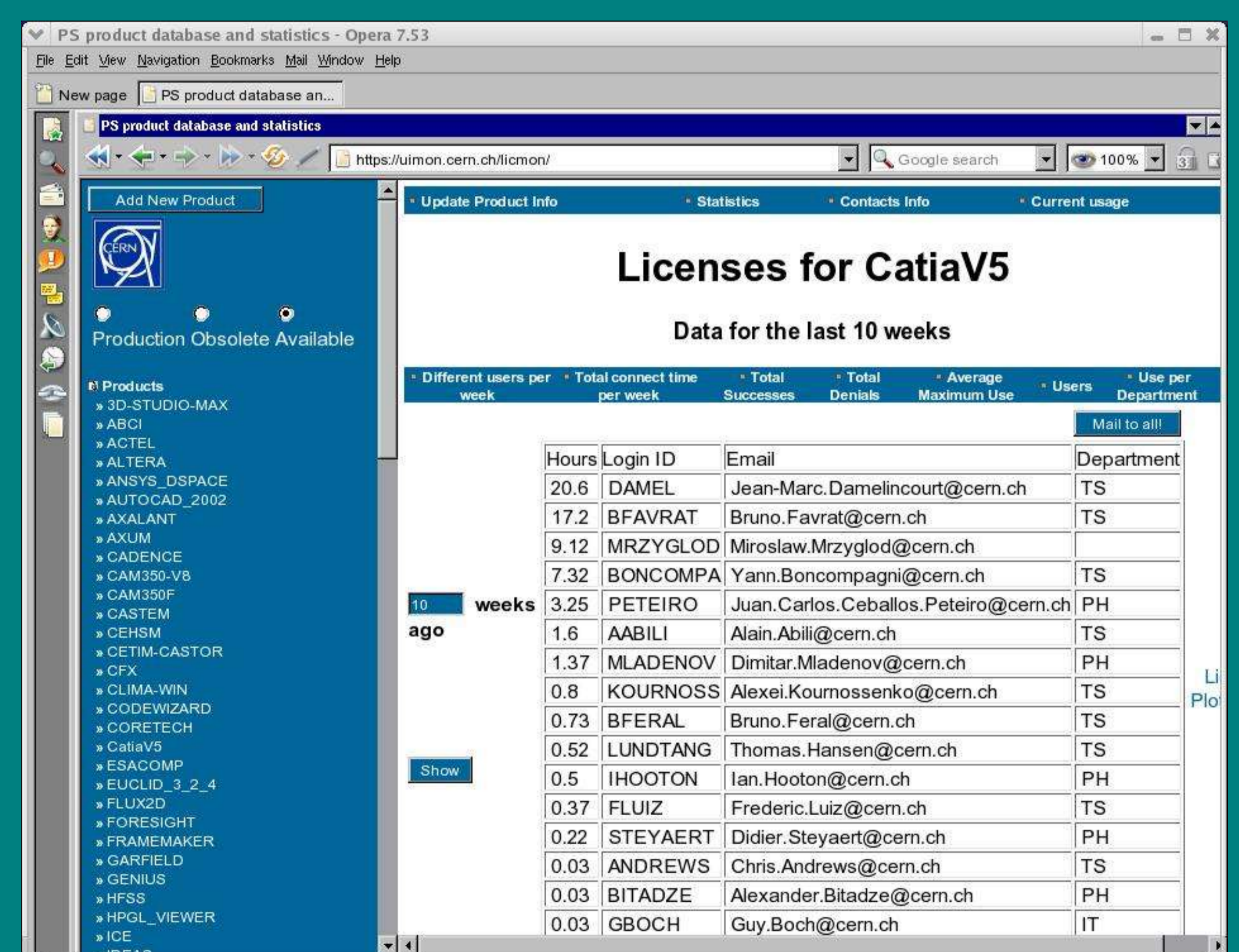
Keeping track of large number and variety of licences is no easy task, so in order to provide a more automated and more efficient service, the PS group has developed a database system to both track detailed licence configurations and to monitor their use. The system is called PSLicmon (PS Licence Monitor) and is based on an earlier development from the former CE group.

PSLicmon consists of four main components: report generation, data loader, Oracle product database and a PHP-based Web-interface. The license log parser/loader is implemented in Perl and loads reports from the different license managers into the Oracle database. The database contains information about products, licenses and suppliers and is linked to CERN's human resource database. The web-interface allows for on the fly generation of statistics plots as well as data entry and updates. The system also includes an alarm system to notify about licence expiry.

Thanks to PSLicmon, the support team is able to better match licence acquisitions with the diverse needs of its user community, and to be in control of migration and phaseout scenarios between different products and/or product versions. The tool has proved to be a useful aid when making decisions regarding product support policy and licence acquisitions, in particular ensuring the provision of the correct number of often expensive software licences to match CERN's needs.



Statistics view, aggregate use of all Ansys features.

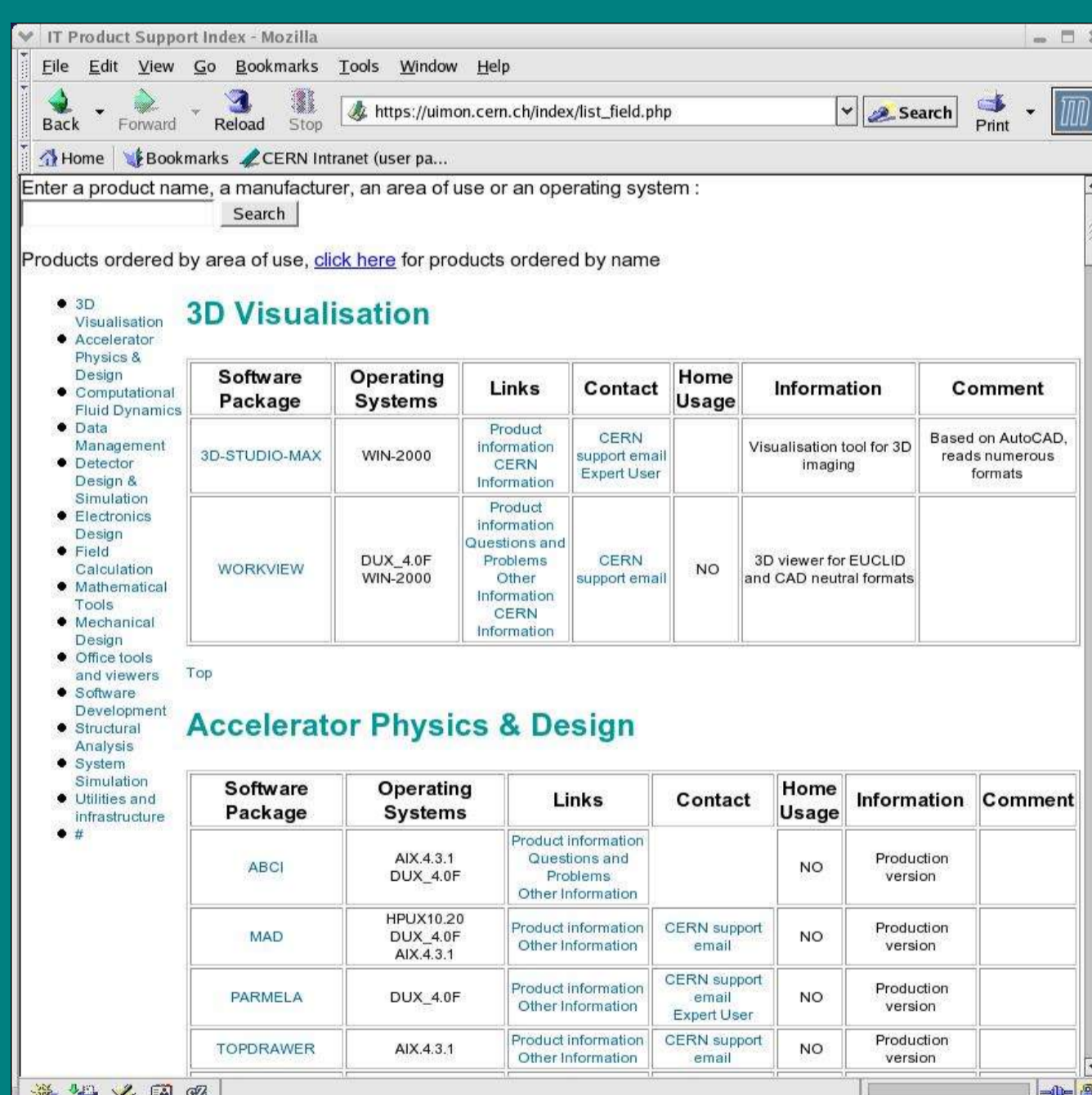


**Licenses for CatiaV5**

Data for the last 10 weeks

Hours	Login ID	Email	Department
20.6	DAMEL	Jean-Marc.Damelincourt@cern.ch	TS
17.2	BFVRAT	Bruno.Favrat@cern.ch	TS
9.12	MRZYGLOD	Miroslaw.Mrzyglod@cern.ch	TS
7.32	BONCOMPA	Yann.Boncompagni@cern.ch	TS
3.25	PETEIRO	Juan.Carlos.Ceballos.Peteiro@cern.ch	PH
1.6	AABILI	Alain.Abili@cern.ch	TS
1.37	MLADENOV	Dimitar.Mladenov@cern.ch	PH
0.8	KOURNOSS	Alexei.Kourmossenko@cern.ch	TS
0.73	BFERAL	Bruno.Feral@cern.ch	TS
0.52	LUNDTANG	Thomas.Hansen@cern.ch	TS
0.5	IHOOTON	Ian.Hooton@cern.ch	PH
0.37	FLUIZ	Frederic.Luiz@cern.ch	TS
0.22	STEYAERT	Didier.Steyaert@cern.ch	PH
0.03	ANDREWS	Chris.Andrews@cern.ch	TS
0.03	BITADZE	Alexander.Bitadze@cern.ch	PH
0.03	GBOCH	Guy.Boch@cern.ch	IT

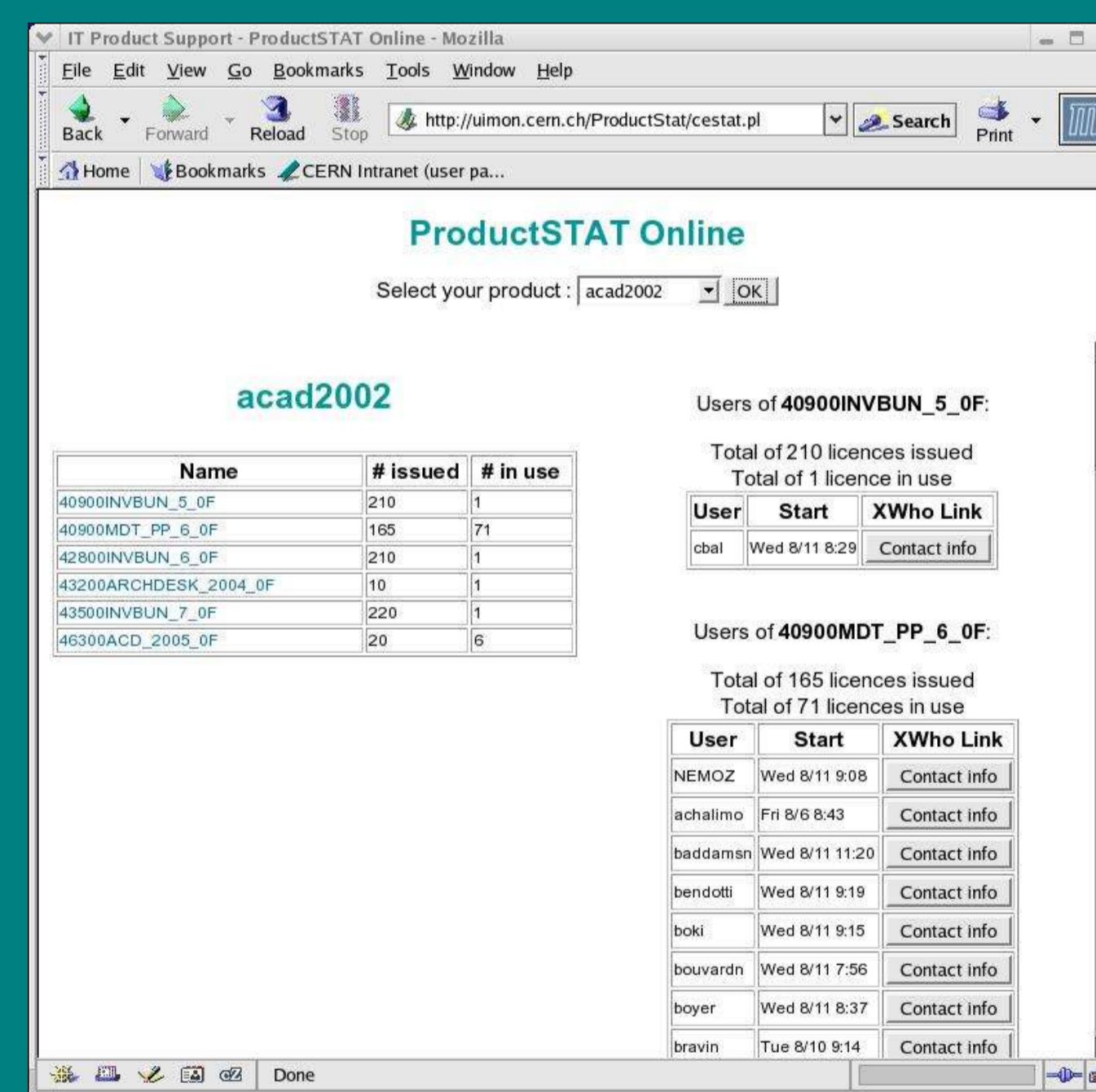
Statistics view: List of users, with a possibility to contact them all by email. (E.g. for service notifications.)



Products ordered by area of use, [click here](#) for products ordered by name

Software Package	Operating Systems	Links	Contact	Home Usage	Information	Comment
3D-STUDIO-MAX	WIN-2000	Product Information CERN Information	CERN support email Expert User	NO	Visualization tool for 3D modeling	Based on AutoCAD, reads AutoCAD formats
WORKVIEW	UNIX_40F WIN-2000	Product Information CERN Information	CERN support email	NO	3D viewer for EUCLID and CAD related formats	

Public Web page with an index of supported products according to application category.



ProductSTAT Online

Select your product: acad2002

Name	# Issued	# In use
40990INVBUN_5_OF	210	1
40990MDT_PP_5_OF	165	71
42800INVBUN_5_OF	210	1
42800CHESM_2004_OF	10	1
43500INVBUN_7_OF	220	1
43500ACD_2005_OF	20	0

Users of 40990INVBUN\_5\_OF: Total of 210 licences issued. Total of 1 licence in use.

User	Start	XWho Link
total	Wed 8/11 8:24	Contact info

Users of 40990MDT\_PP\_5\_OF: Total of 165 licences issued. Total of 71 licences in use.

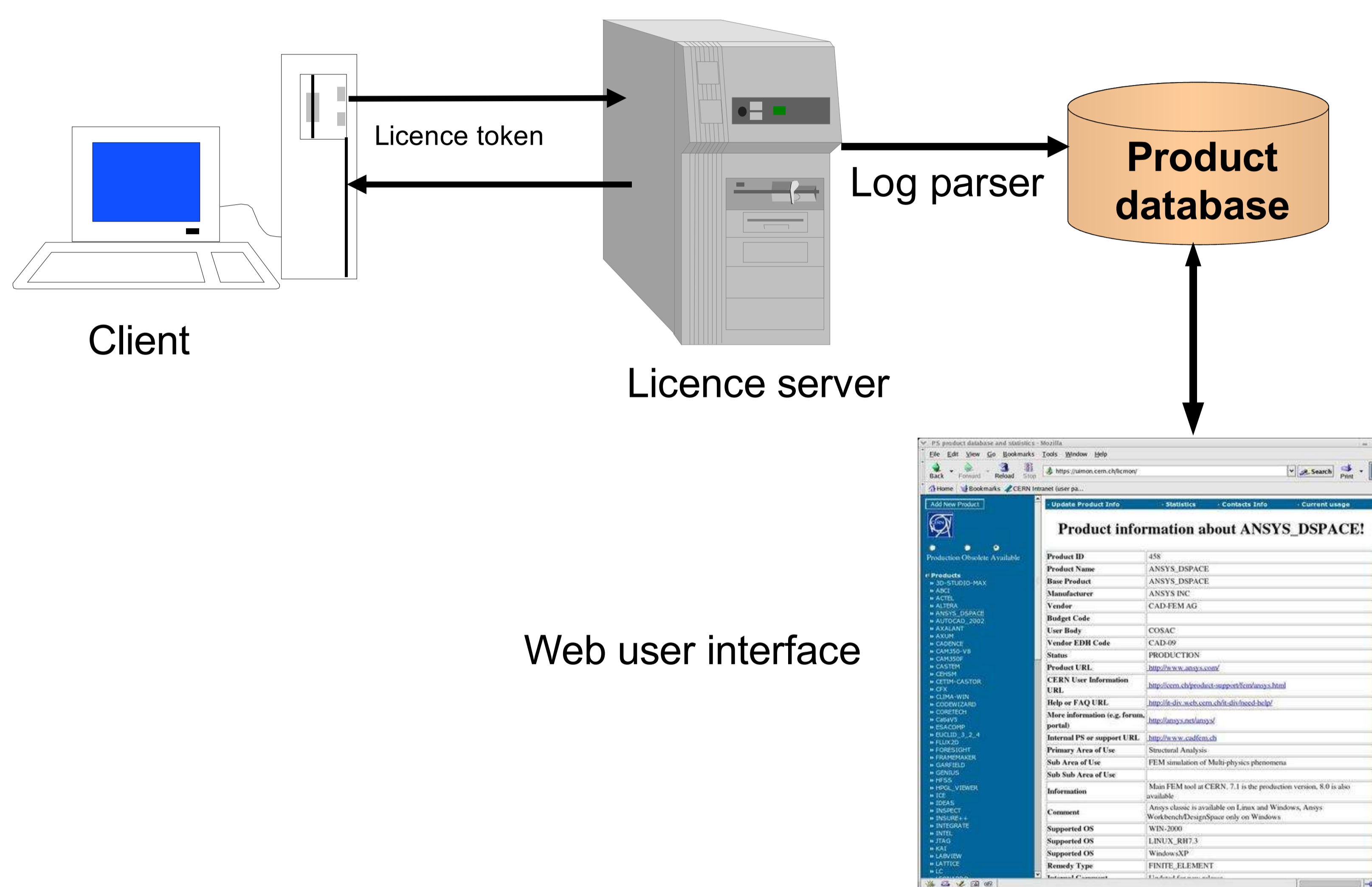
User	Start	XWho Link
nemoz	Wed 8/11 9:08	Contact info
schalmio	Fri 8/8 8:43	Contact info
heidmann	Wed 8/11 11:20	Contact info
sendts	Wed 8/11 9:19	Contact info
noel	Wed 8/11 9:15	Contact info
houvarden	Wed 8/11 7:56	Contact info
boyer	Wed 8/11 8:37	Contact info
bravin	Tue 8/10 9:14	Contact info

"Current use view", displays who is using what feature right now.



# MANAGING SOFTWARE LICENCES FOR A LARGE RESEARCH LABORATORY

## PSLicmon architecture



Redundant licence server cluster

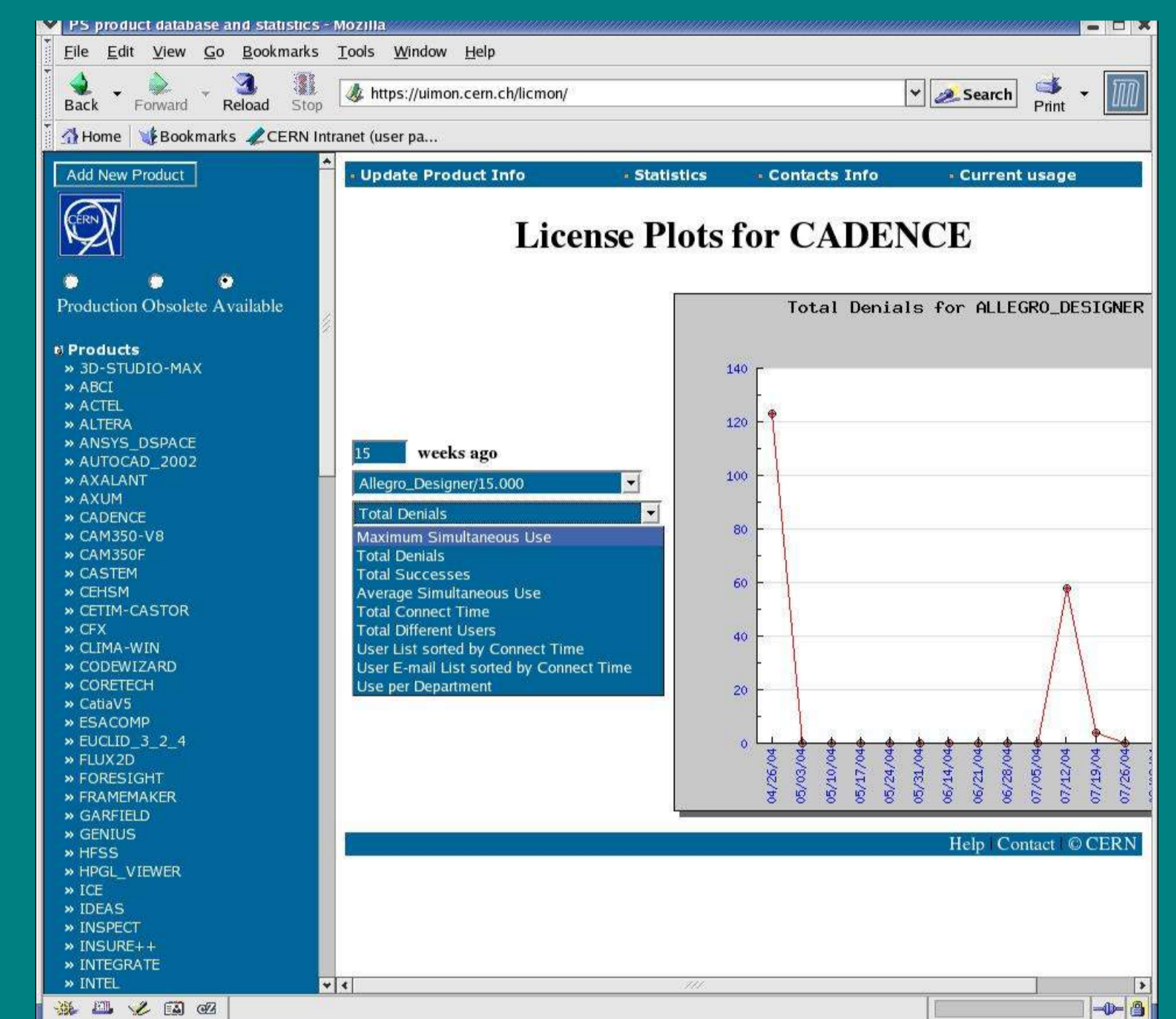
Log file parser implemented in Perl

Oracle product and statistics database

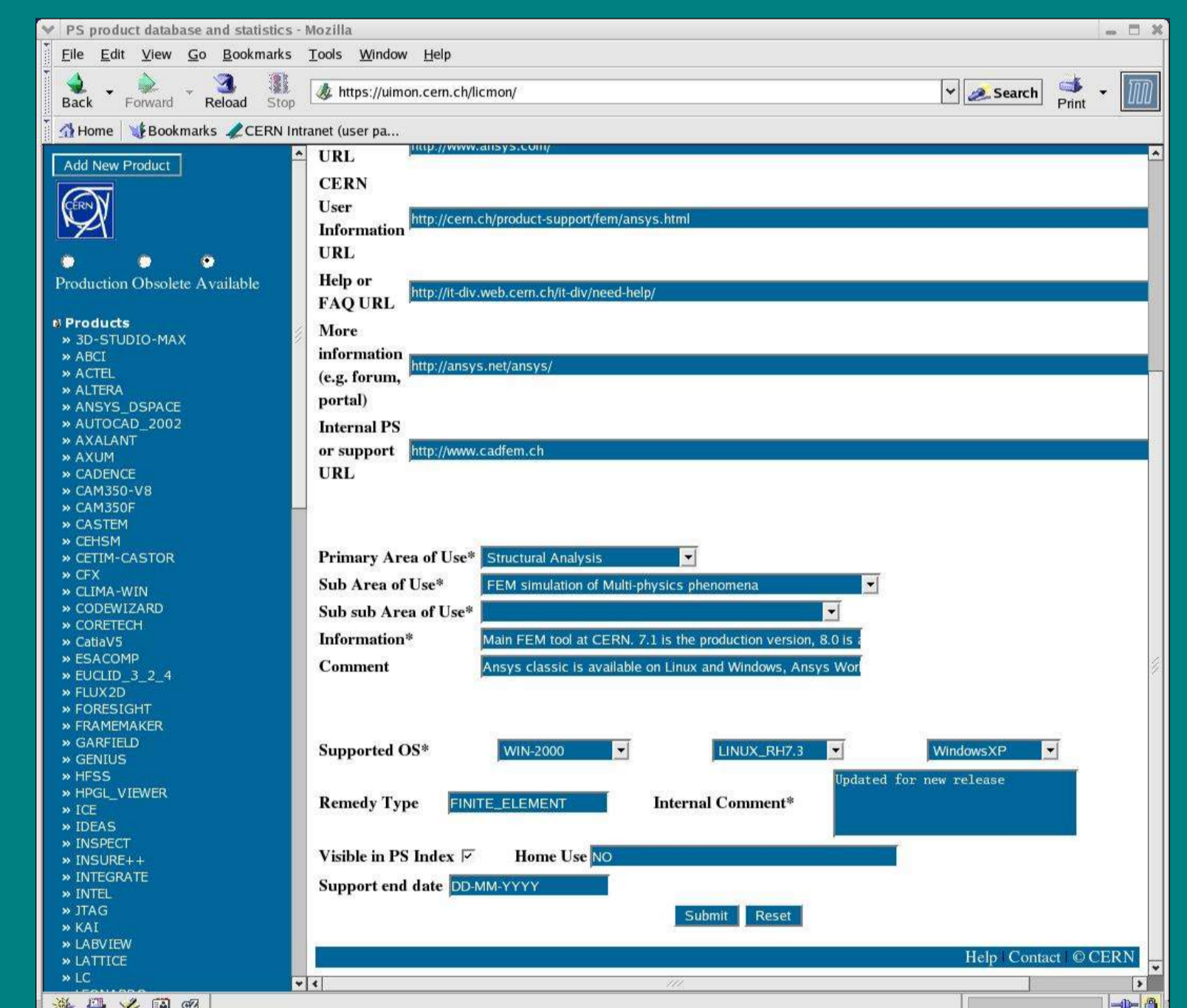
Web interface written in PHP

### Supported licence managers:

- Macrovision FlexLM
- IBM Lum
- Elan licence manager
- MathLM
- Microsoft SMS logs

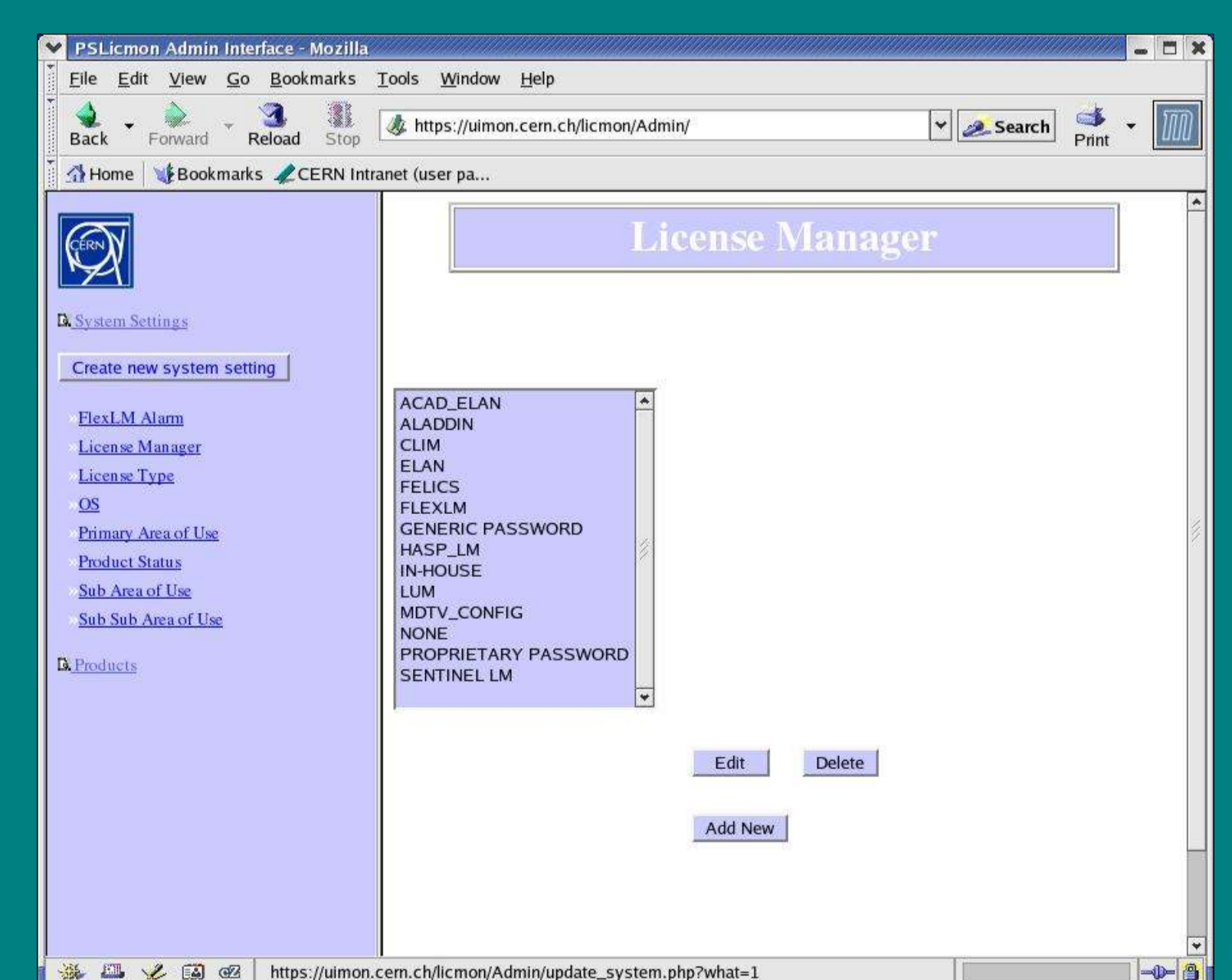


*Feature specific view, here denials of the Allegro designer module of Cadence due to a shortage of licences are shown*



The screenshot shows a "Product data entry/update page" with various input fields for product information, including Product ID, Product Name, User Product, Manufacturer, Budget Code, User Email, Product URL, CERN User Information, Internal PS or support URL, Primary Area of Use, Sub Area of Use, Sub sub Area of Use, Information, Comment, Supported OS, Remedy Type, Internal Comment, Visible in PS Index, and Support end date.

*Product data entry/update page*



The screenshot shows the "System settings via Admin interface" for the License Manager. It displays a list of license managers with columns for Name, Primary Area of Use, Product Name, Sub Area of Use, and Sub sub Area of Use. The list includes ACAD\_ELAN, ALADDIN, CLUM, ELAN, FELICS, FLEXLM, GENERIC\_PASSWORD, HSPSP\_LM, IN-HOUSE, LUM, MDTV\_CONFIG, NONE, PROPRIETARY\_PASSWORD, and SENTINEL\_LM.

*System settings via Admin interface.*