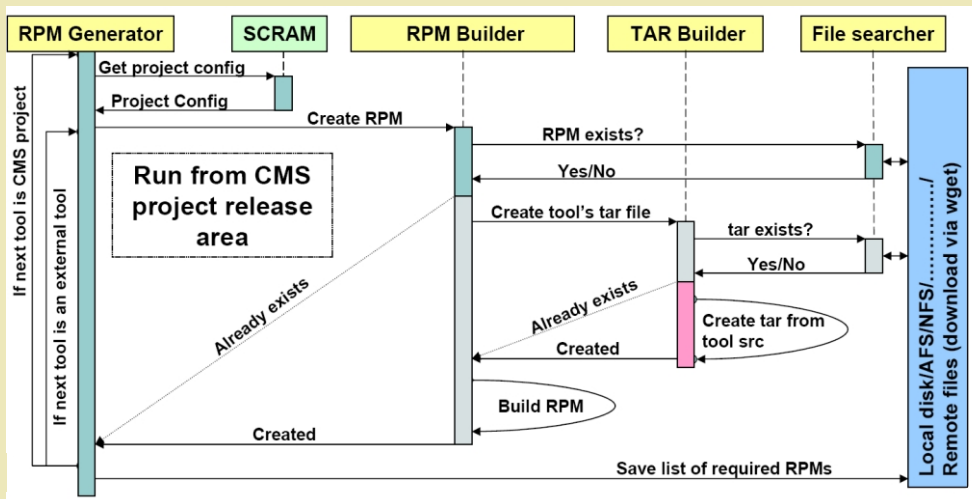


## The RPM Generation



RPM generation procedure:

- Start with one parent project based on CMS project release area at CERN
- Check consistency of SCRAM project configuration (skipped for external tools)
- Check whether RPM exists already
- If not, check whether tar file exists for this tool
- If not, create tar file
- Build RPM
- Repeat for all projects/tools on which the parent project depends
- Save list of dependencies for parent project

RPMs successfully tested for:

- RedHat 7.3
- CERN RedHat 7.3
- Fermi Linux 7.3.1
- Mandrake Linux 9.1
- SuSE Linux 8.2, 9.0

## An Installation Example

```
cmsSwGridInstall.pl
-t rpm --site fzk.de
--install "ORCA_8_4_0 OSCAR_3_4_0"
```

Default installation path CMS\_PATH: \$VO\_CMS\_SW\_DIR/  
VO\_CMS\_SW\_DIR is the software installation area for the CMS virtual organisation on grid sites in LCG

Executable (lca\_install\_sw.pl):

- Check on \$VO\_CMS\_SW\_DIR
- Check disk space
- Check against installed software
- Call cmsi.pl
- Copy cmsset\_default.(c)sh to \$VO\_CMS\_SW\_DIR
- Publish new software (lca-ManagedVOTag)

Grid-specific installation part:

- Find compute element (CE)
- Prepare tar.gz archive of xcmsi
- Prepare executable to submit
- Submit jdl file (edg-job-submit)
- Start job monitor to fetch output after completion

Grid monitoring of fzk.de

The following information summarizes the data concerning FZK stored in the GOC database.

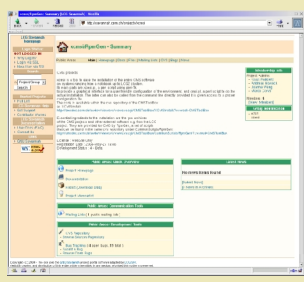
SiteName	Contact	Domain	Type	Host	System	Address	Install	Status	Install	Status	Operation	Comment
FZK-LCB2	lca-admin@itn.fzk.de	fzk.de	CE	gridap05	RH7-3adg			LCFsg	configured	running		
			SE	gridap02								
			UC	lca-ftp-w								
			LCFG	lcafg								

```
cmsi.pl
-f cmsset_default.csh
-d "ORCA_8_4_0 OSCAR_3_4_0"
```

Default installation procedure:

- Parse configuration file cmsset\_default.csh
- Copy system RPM database (to avoid root privileges)
- Download RPM lists for selected installs from CERN
- Prepare lists of RPMs to be installed
- Check compiler strategy (binary RPM, system compiler, ...)
- Start installation of: GCC compiler, SCRAM, LCG, CMS RPM packages
- Final corrections

Logging window of graphical installation mode



**Bug Reporting System**  
<http://savannah.cern.ch/projects/xcmsi>  
**and Download Page**  
<http://cern.ch/cms-xcmsi>

