



Testing EDG 1.2

Status report

Test Group Sites

◆ TSTG

- IN2P3/LPC
- CPPM/CNRS + CS-SI
- CEA/Saclay
- IFAE

◆ Also collaborating

- INFN EDG Testing Group
- LIP (Crossgrid test/validation coordination)



Test Group Activity: Status

- ◆ Download and install RPMs
 - Scripts to automate the installation of a non-LCFG node from a rpm list
- ◆ Installation & Configuration tests
 - Script to check if CRLs are installed in a node and are not out-of-date
 - Script to query the MDS to check GIIS/GRIS information published
- ◆ Middleware functionality tests
 - MyProxy: Scripts to test some MyProxy services from a MyProxy client
 - Job Cycle (RB,JSS,LB...): Given a .jdl, scripts to automate the job submission cycle:
 - job submit -> job status (loop until OutputReady) -> job get output
 - Data Management (GDMP & RM): Scripts to automate a file replication cycle among 2 Ses.
 - subscribe SE-A to SE-B -> GridFTP file to SE-A -> register & publish at SE-A -> replicate file from SE-A to SE-B -> delete file from SE-A and SE-B



Test Group Activity: Status

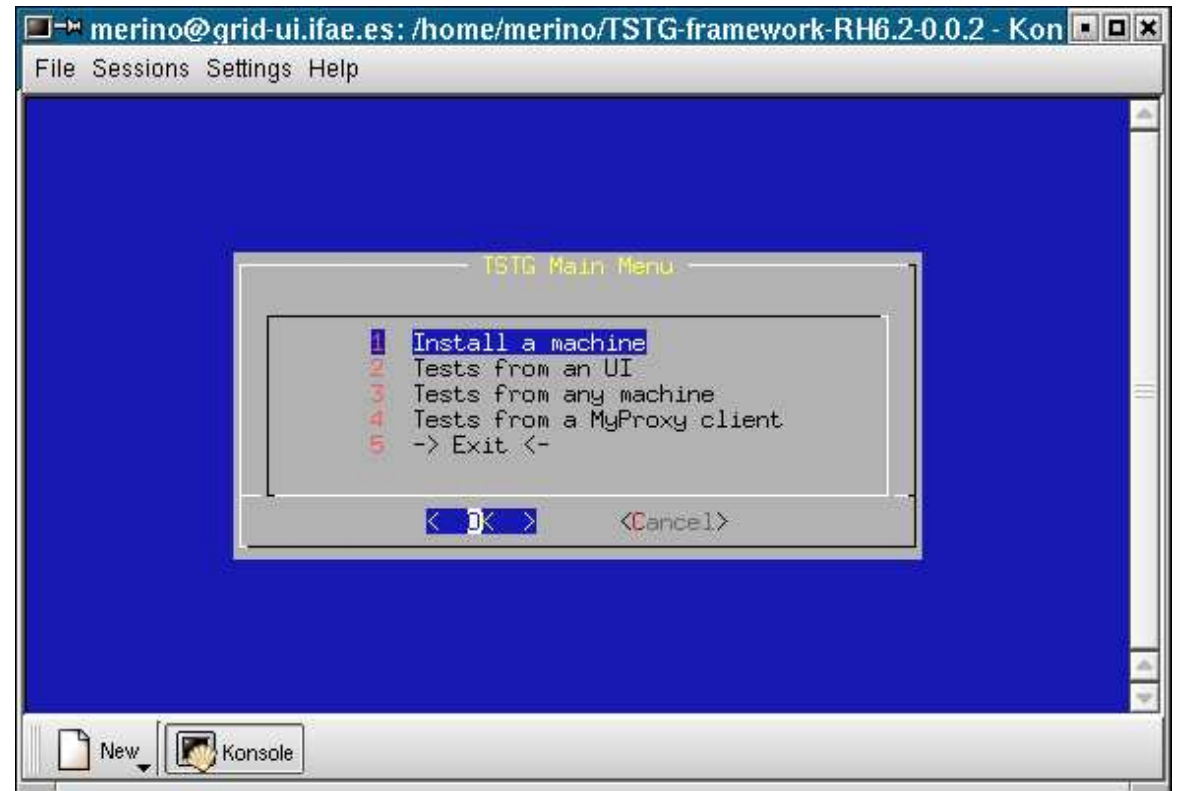
- ◆ All the test scripts written by the Test Group are made available in the web at:

<http://marianne.in2p3.fr/datagrid/TestPlan/Tools/index.html>

- ◆ ~Beginning of July:

All scripts are collected and put together.

1st prototype of testsuite available from Test Group web page



Data GRID INFN EDG Testing Group

- ◆ There is a testing group at INFN coordinated by Flavia and formed by ~7 (part-time) members.
- ◆ This group showed interest in trying to coordinate its activity with the EDG Test Group.
- ◆ They have defined a list of tests to be done on each grid element and are producing a test suite based on shell scripts.

Global checks

- existence of mandatory files, users
- running services
- params in globus.conf, info-mds.conf
- env variables
- GRIS/GIIS ldapquery check
- ...

CE specific checks

- Check of CE Info provider static files
- Globus-job-run with fork & PBS
- PBS configuration
- ...

SE specific checks

- Check of SE Info provider static files
- GDMP: .conf files, functionality...
- ...

UI, WN, RB... specific checks

All the code produced is kept under conf. control in a CVS repository



GDMP testing

- ◆ During July, most of the testing activity focused on testing GDMP
- ◆ Some TSTG SEs were configured (edg_beta9) to make these tests:
 - LIP - Ingrid03.lip.pt
 - IF AE - grid-s1.ifae.es
 - CPPM - dg1-cppm.datagrid.cnrs.fr
 - CNAF - testbed007.cnaf.infn.it
- ◆ The testing helped to discover some conf. problems, essentially:
 - Missing user/host certificates in grid-mapfiles
 - Wrong RC configuration at gdmp.private.conf
- ◆ Once those were corrected, simple replication tests were done without problem

Data GRID GDMP testing

- ◆ The script used to do these tests was made available on the Test Group web page and sent to the Iteam mailing list:

• "inter-subscribe" SE-A and SE-B

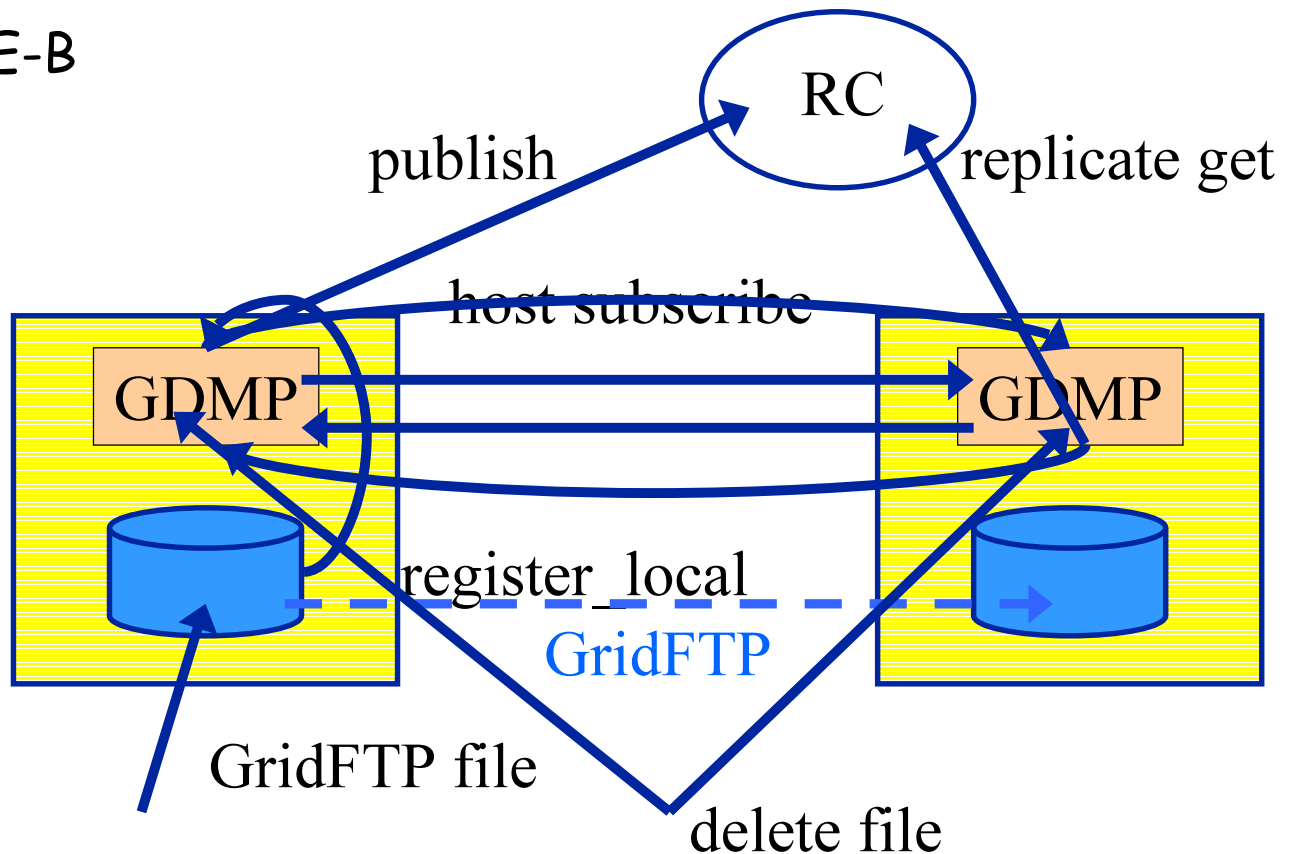
• check one way:

- gridFTP file to SE-A
- register and publish at SE-A
- replicate file SE-A -> SE-B

• check the other way



- gridFTP file to SE-B
- register and publish at SE-B
- replicate file SE-B -> SE-A

• delete both files





Some tests performed at IFAE

- ◆ Run an "array" of tests on TSTG and Development TB
 - Development TB (Atlas VO) 
- ◆ Similar tests using the Replica Manager still under development:
 - *edg-replica-manager-copyAndRegisterFile*
 - *edg-replica-manager-replicateFile*
 - *edg-replica-manager-deleteFile*
 - *edg_rc_deleteLogicalFileName (!)*
- ◆ Automatic tests under preparation. Some problems found with return values from RM commands. 

◆ Most common errors due configuration issues:

■ Out-dated grid-mapfile / missing site certificates:

```
Server Error [XXX.XXX.XXX]: Can't find user with
  CN="/C=YYY/O=YYY/OU=host/L=YYY/CN=YYY.YYY.YYY" in grid-mapfile
  "/opt/edg/etc/atlas/grid-mapfile" [ Thu Aug 29 20:26:33 2002 ]
Error: the connection to host XXX.XXX.XXX:2000 cannot be established/authorized !
```

■ Replica Catalogue settings:

```
Server Error [XXX.XXX.XXX:2000]: Published to remote hosts but RC not updated due to
  error in updating replica catalogue [ Thu Aug 29 20:31:43 2002 ]
```

```
Server Error [XXX.XXX.XXX:2000]: Deleting in Replica Catalogue failed.
```

■ MDS GRIS service on the SE not working:

```
ldap_bind: Can't contact LDAP server
```

■ Other:

- error: [globus_ftp_client] FTP server: 530 No local mapping for Globus ID
- Warning: GDMP_STORAGE_DIR is not set in gdmp.conf file.



GDMP testing

- ◆ Some other errors still to be understood:

- *gdmp_replicate_put*:

Sometimes, after the message "1 replica found for..." and before issuing the message "file XXX successfully transferred":

- It gets stuck with:

- ```
.ls: /afs: No such file or directory
```

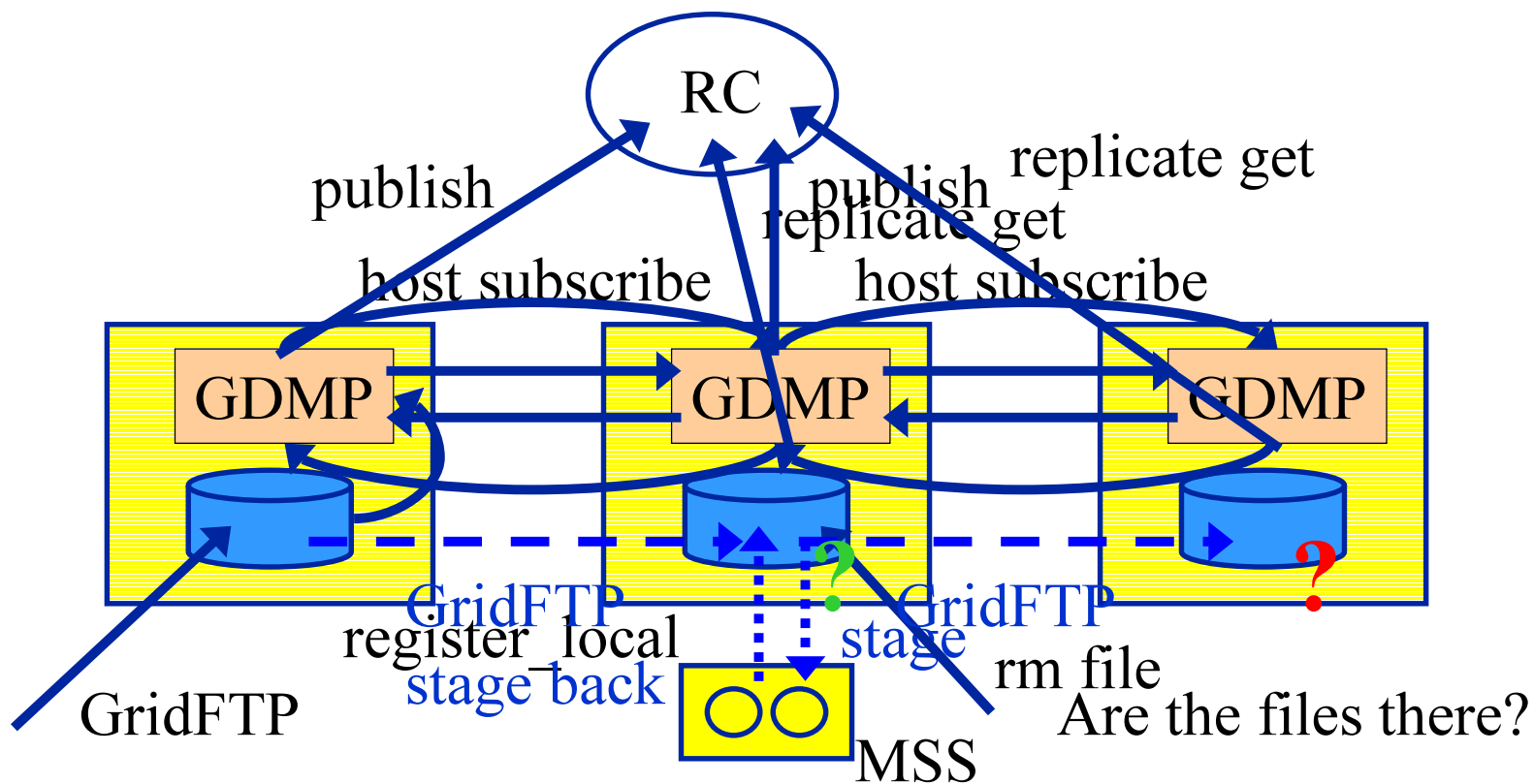
- Issues the error:

- ```
GDMP_DataMover::get(): Error: Disk space left on  
"/flatfiles/06/wpsix" device is not enough for file  
"/flatfiles/SE1/wpsix/dummy_file.020829203202" of size  
262144 [ Thu Aug 29 19:58:55 2002 ]
```



Data GRID GDMP-MSS

- Some more complex replication patterns have been tested by EDG people: script sent by **S.Burke** to the ITeam mailing list:



Data GRID Summary

- ◆ Some test scripts have been produced by the Test Group. Test suite available from the web page in marianne.
- ◆ Focus on testing GDMP in July:
 - TSTG
 - INFN-TSTG
 - LIP - Coordinators of Crossgrid test/validation group
- Testing helped to find some configuration problems.
- No big problems found in GDMP functionality for the simple file replication test case performed.
- ◆ Scripts produced by other EDG people should be collected and integrated in the test suite.
 - Ex/ S.Burke GDMP+MSS script - Shows a problem in GDMP functionality:
 - If a file is replicated from site A where it isn't on the disk, but in MSS, it should be still moved from MSS to disk and then moved to the other site.



Conclusions and future

- ◆ From our experience, lots of problems come from **wrong configuration**
 - **LCFG** helps on this, but...
 - Some people think configuring an LCFG server from scratch is **too heavy** (~1week)
 - Writing some sort of LCFG Server installation HOWTO with a clear **step-by-step** procedure could help
 - Even on LCFG installed nodes, some configuration problems can arise...
 - Issue of SE host certificates on GDMP VO-specific grid-mapfiles



Conclusions and future

◆ Objectives of the Test Group

- Testing -

- . After a new piece of m/w has been released: **Automatic** way to verify that the **whole** EDG m/w functionality works.

- Validation -

- . For **new sites**: Provide test suite to automatically check if the installation & configuration are Ok.

- Focus of Test Group must be on producing and maintaining a test suite to automate tests.

- Several people contribute => need to adopt some **methodology**

- Clear, exhaustive... definition (a priori) of features to be tested
 - Keep the produced code under configuration control



Conclusions and future

- ◆ Validation -
 - We must go towards being able to perform a **fully automatic** installation, configuration and **testing** of any new Grid node.

- ◆ EDG, LCG and Crossgrid testbeds will have lots of commonalities:
 - A coordinated effort is needed for their test and validation activities.
 - EDG/LCG/XG Test and Validation task force?