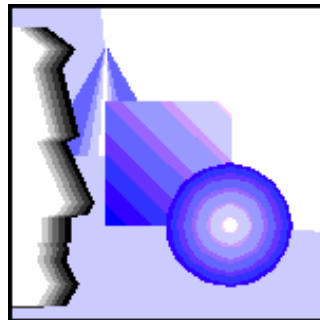


CREATIVE SERVICES

Comprehensive Solutions in Science and Technology



EDG WP6 meeting, 30.10.2002
(Klaus Röhrich)




activity

CREATIVE SERVICES provides technical and scientific assistance in product development and research projects.

- Our Clients are SME and International Organisations.
- Our missions involve desktop work as well as conception and construction of electro-mechanical devices.
- Recently, emphasis has changed towards software production and testing.
- Today a large fraction of our turnover is made in mathematics, statistics and software development.



about us

- SARL since 1995, 7 associates, 30.000 €
- Technoparc St.Genis-Pouilly, France
 - offices, workshop space as necessary
- full time physicists (two)
- part-time engineers (varying)
 - + partners (→ **SYNSPACE** )
 - + consultants
- Connections with CERN
 - ✓ personal background
 - ✓ partnership contract
 - ✓ optical fibre link



work examples

- **Scientific work**

 - Virus inactivation in protein samples (RIMM)

 - Electro-magnetic calorimeter for e/π separation (CERN)

- **Technical and engineering**

 - Small versatile shredder (RIMM, patent)

 - Microwave infectious waste steriliser (ACME)

- **Informatics and computing**

 - Auction participation via the Internet "V@E" (NETENCHERES)

 - Population model "4SPopMod", Cost-Effect analysis "MCLeague" (WHO)

- **Teaching and proposal writing**

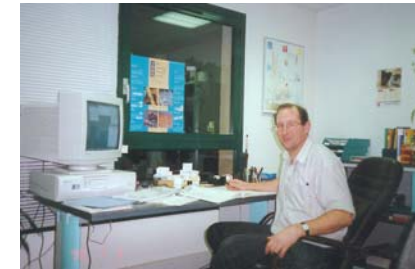
 - "Systematic SW Testing", "Effective Test Management" (SYNSPACE)

 - EU LSF (CERN/ISOLDE)

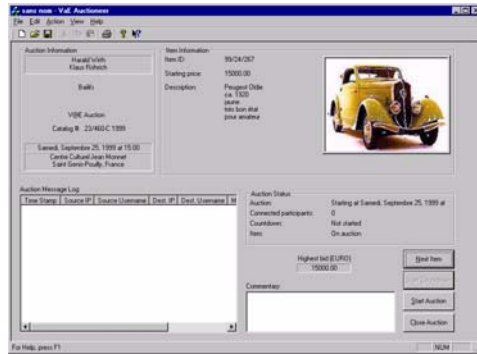


work example : V@E

Real-Time Auction on the Internet



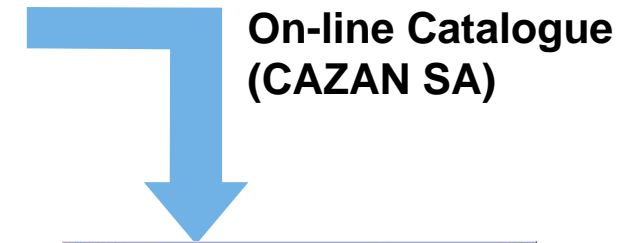
Java "supplier"



C++
"auctioneer"



Central data base
(MS ACCESS)



On-line Catalogue
(CAZAN SA)




Java "bidder"s





why we might be useful for SW testing

- software development (FORTRAN, C++, Java,...) as physicists in research and as company for industrial clients
- experience in software process/product quality with ISO 9126/GEQ, SPICE (ISO 15504)/CMM
- systematic testing and test planning/management in theory (teaching) and practice (→ **SYNSPACE** )
 - test planning (priority, constraints, contingencies)
 - test approach (quality/coverage criteria)
 - test suites
 - tools for automation
 - execution
 - coverage analysis, error analysis, metrics



thank you

EDG WP6 meeting, 30.10.2002
(Klaus Röhrich)