

IUCC - Israel

Grid Certificate Authorities meeting
Dublin
11-12 December 2003



Moshe Goldberg
mgold@mail.iucc.ac.il

Contents

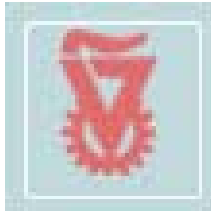
- IUCC: NREN in Israel
- GRID activities
- CP/CPS outline

**Inter -
University
Computing
Center**

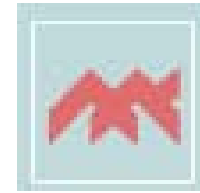




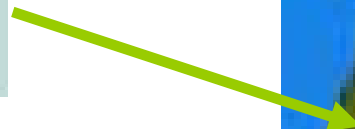
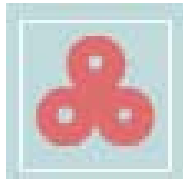
Technion
Israel Inst Tech



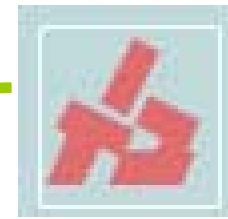
Haifa
University



Open
University



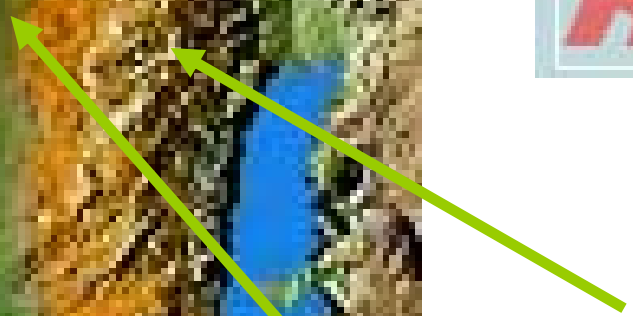
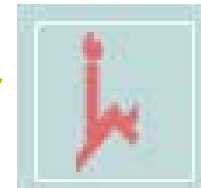
Bar Ilan
University



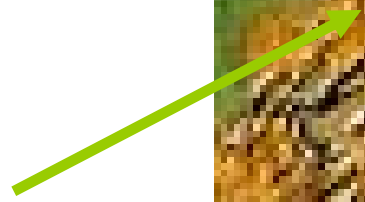
Tel Aviv
University



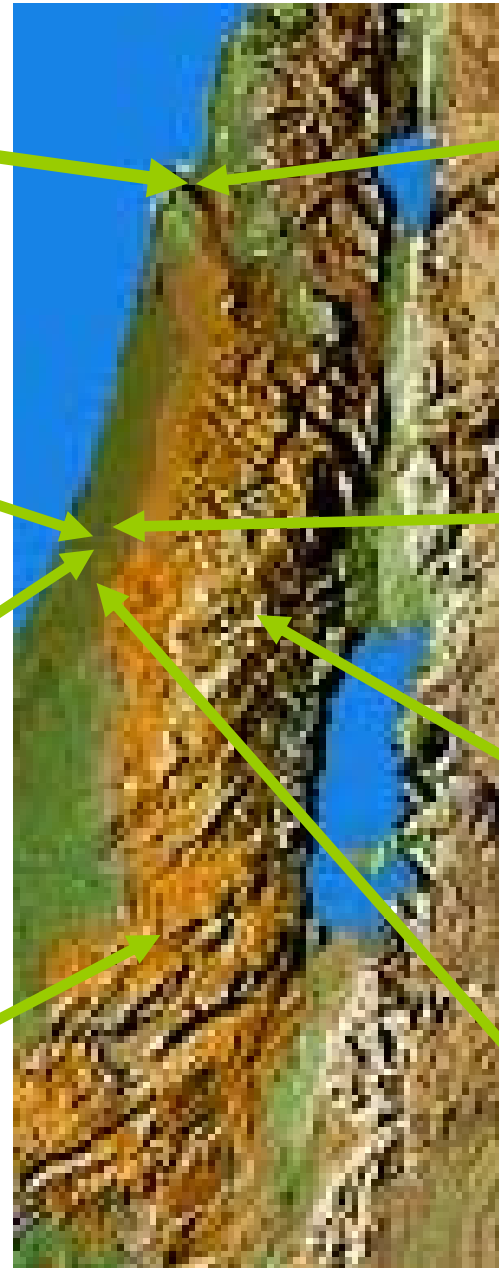
Hebrew
University



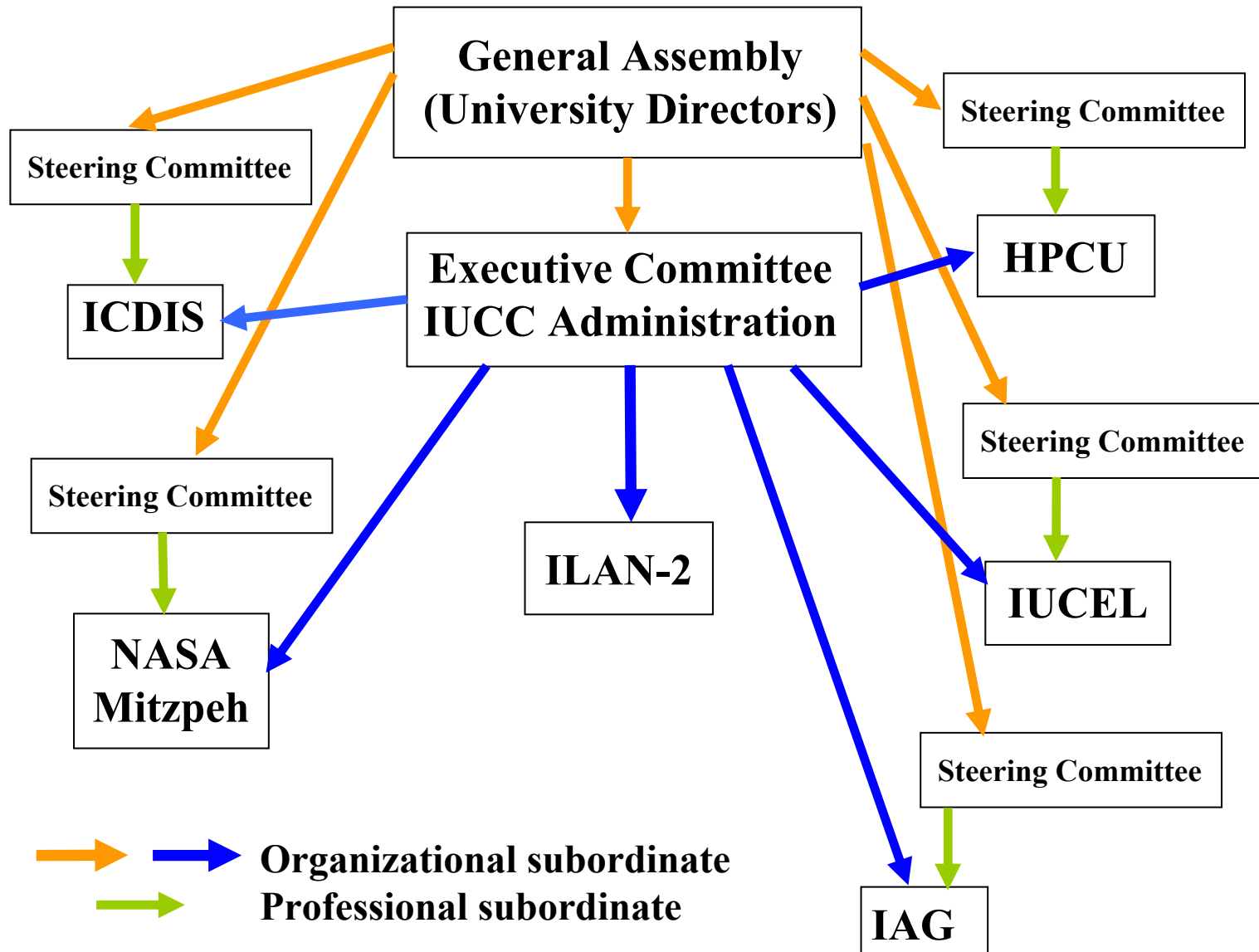
Ben Gurion
University



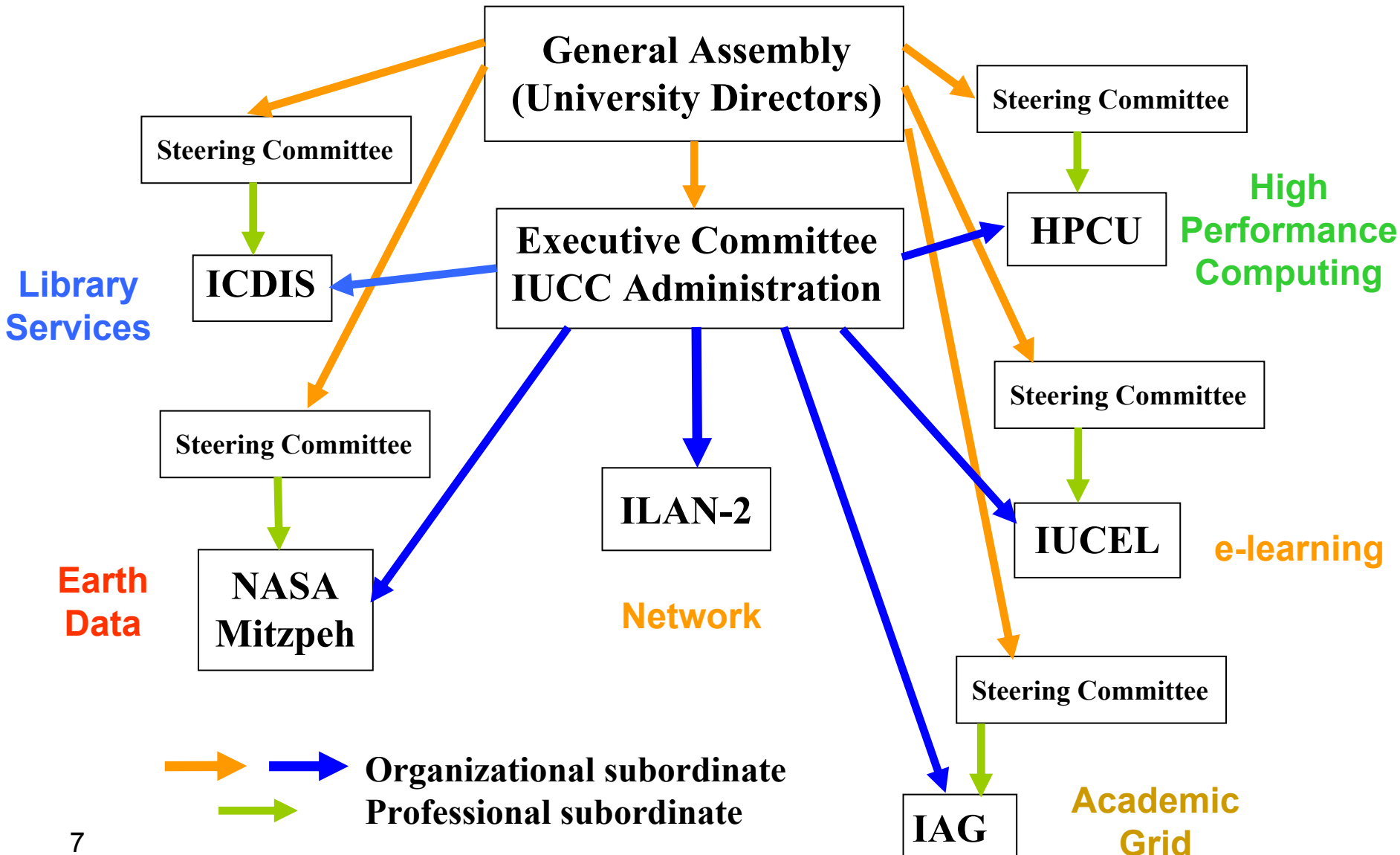
Weizmann
Institute



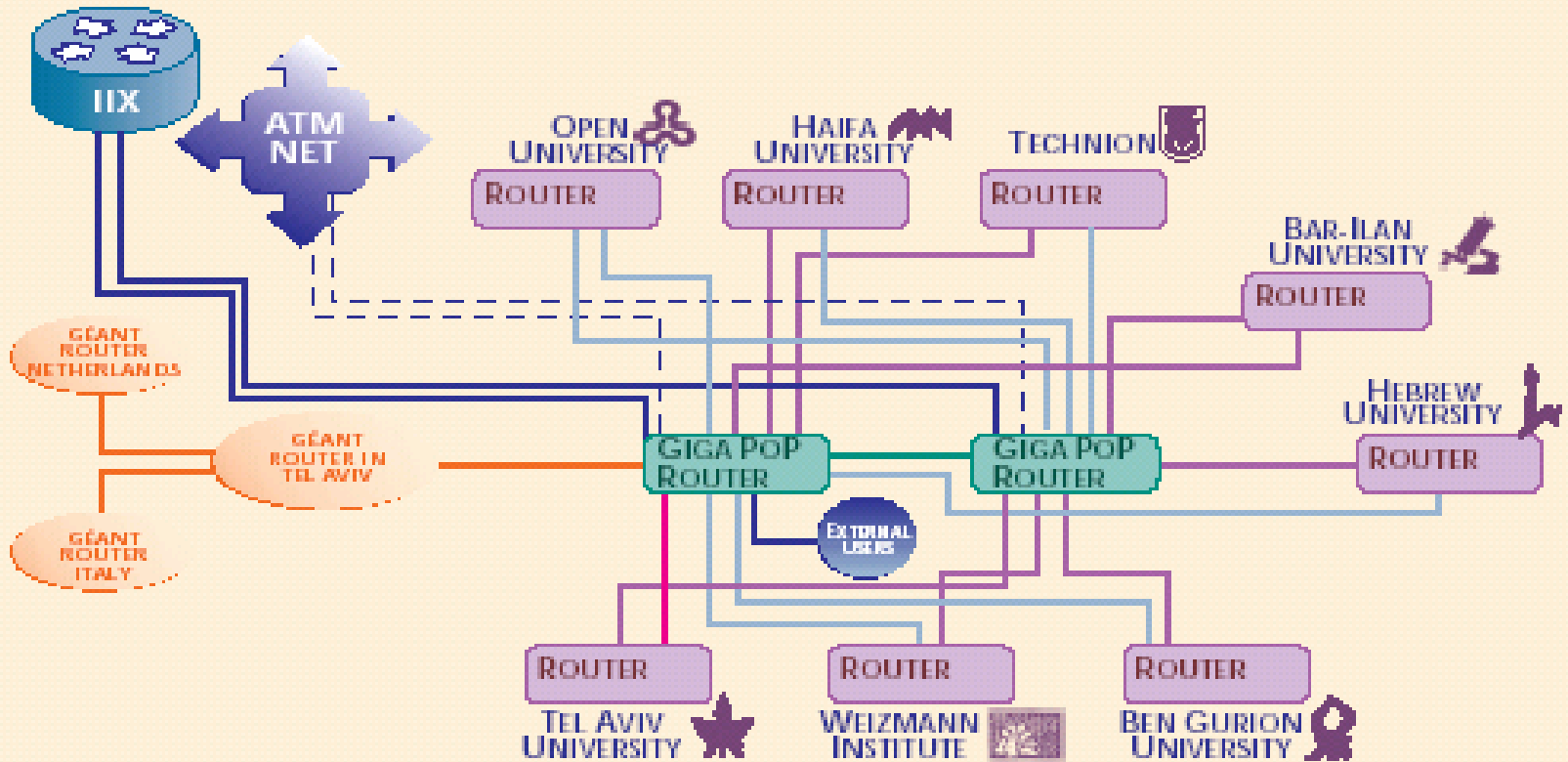
IUCC Structure



IUCC Structure



ILAN-2 TOPOLOGY



Legend:

- Géant - European academic Network: 310 Mb/sec.
- GE: Giga Ethernet: 155 Mb/sec.-1Gb/sec.
- Med1 links: 34 Mb/sec-45Mb/s
- Fast Ethernet: 45 Mb/sec.-100 Mb/sec.
- Cellcom links: 34 Mb/sec.-155 Mb/sec.

<http://www.lucc.ac.il>

1Q 2004

GRID activities in Israel

IAG - Israel Academic Grid

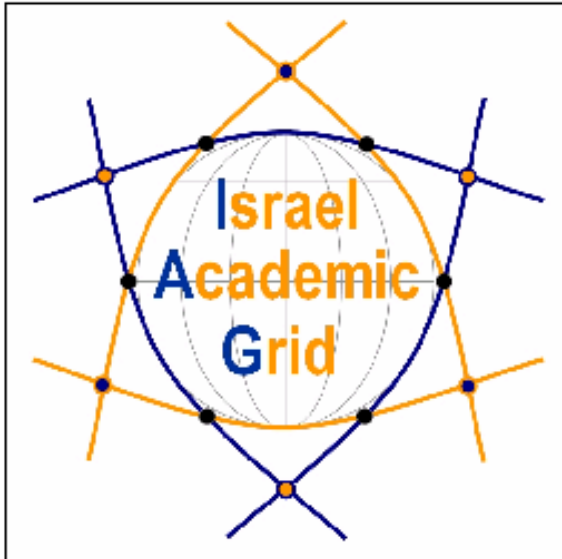
- * In initial stages of formation
- * Founding institutions
 - IUCC
 - Weizmann Institute
 - Tel Aviv University
 - Open University
 - Ben Gurion University
 - Haifa University
- > 500 processors in various computer farms
- * To be linked to EGEE
- * See – <http://iag.iucc.ac.il>

File Edit View Favorites Tools Help

Back Forward Stop Refresh Home Search Favorites Media Print Mail

Address <http://neuron.tau.ac.il/~horn/iag/> Go Links

Israel Academic Grid



[General](#)

[Announcements](#)

[Presentations, Software and Links](#)

Done Internet

Academic GRID projects

- HEP (CERN)
 - Israeli participation
- Bioinformatics
 - COBI – inter-university coordination
- Astrophysics
 - Formation of the universe
- NASA Earth Observing System
 - Regional data center
- Industrial engineering – simulation

Commercial – Grid Consortium

GRID-IL Participating companies

- CollaComp
- Etagon
- GigaSpace
- IBM
- Intel
- Magic
- Oracle
- SunGard
- Tecnomatix

CP / CPS Highlights

Registration Authorities

Local RA in each member institution

DEFAULT IUCC –

(1) non-affiliated

(2) hosts

Authentication

Personal acquaintance

Formal ID cards / passports

CP / CPS Highlights

End Entities

- Users
- Hosts
- Servers (private key encrypted)

Certificate examples

- User:

O=IUCC,OU=TAU,OU=Users,
CN=Moshe Goldberg

- Host:

O=IUCC,OU=TECHNION,OU=Hosts,
CN=tx.technion.ac.il

CP / CPS Highlights

Confidentiality

Private key is generated by subscriber
CA and RA never have access to private key

Key sizes

User: 1024 bits
Host: 1024 bits
IUCC CA: 2048 bits

Validity

IUCC CA root: 5 years
Entity certificates: maximum of 3 years

Contact Information

Web address: <http://certificate.iucc.ac.il>

Policy document: [*http://certificate.iucc.ac.il/ca*](http://certificate.iucc.ac.il/ca)

Contact person:

Hank Nussbacher

IUCC

Computer Center

Ramat Aviv, ISRAEL

hank@mail.iucc.ac.il