

European Study Towards a Global TeV Linear Collider





EU Framework 6

The EU's Framework Programme for Research and Technological Development is a major tool to support the creation of the European Research Area - ERA.



- European Union decided to include "Design Studies" in support of Research Infrastructures
- 3 calls for 200 Mio. € total within FP6

an opportunity not to be missed → EUROTeV

LC making progress globally

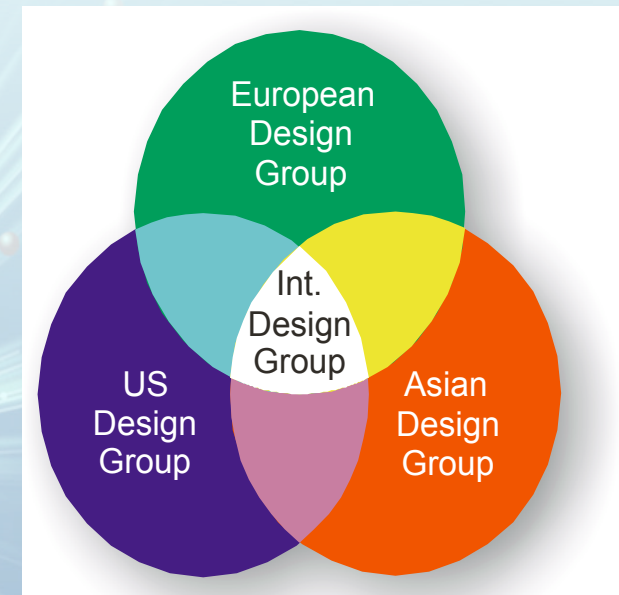
- Political scene
 - OECD recommendation
 - ILC SG
 - encourages ITRP for a swift decision towards technology
 - starts planning for the Global Design Initiative (GDI) to coordinate the efforts worldwide
- Community reconfirms priorities
 - exploit existing facilities
 - start LHC
 - prepare for ee-Linear Collider
 - develop multi-TeV accelerator technology

Why - now?

- EU Framework Package 6
 - a 70 Mio € call of the European Union was due March 2004
 - Support of Design Studies
 - EU contribution is $\leq 50\%$ of total bid
 - typical range of grant 1-10 Mio € (Estimated subscription: 700 Mio €)
- Excellent Opportunity
 - demonstrate the need for advanced accelerator development
 - gain access to the required resources within the EU
 - obtain the necessary visibility in Europe and worldwide for the LC cause

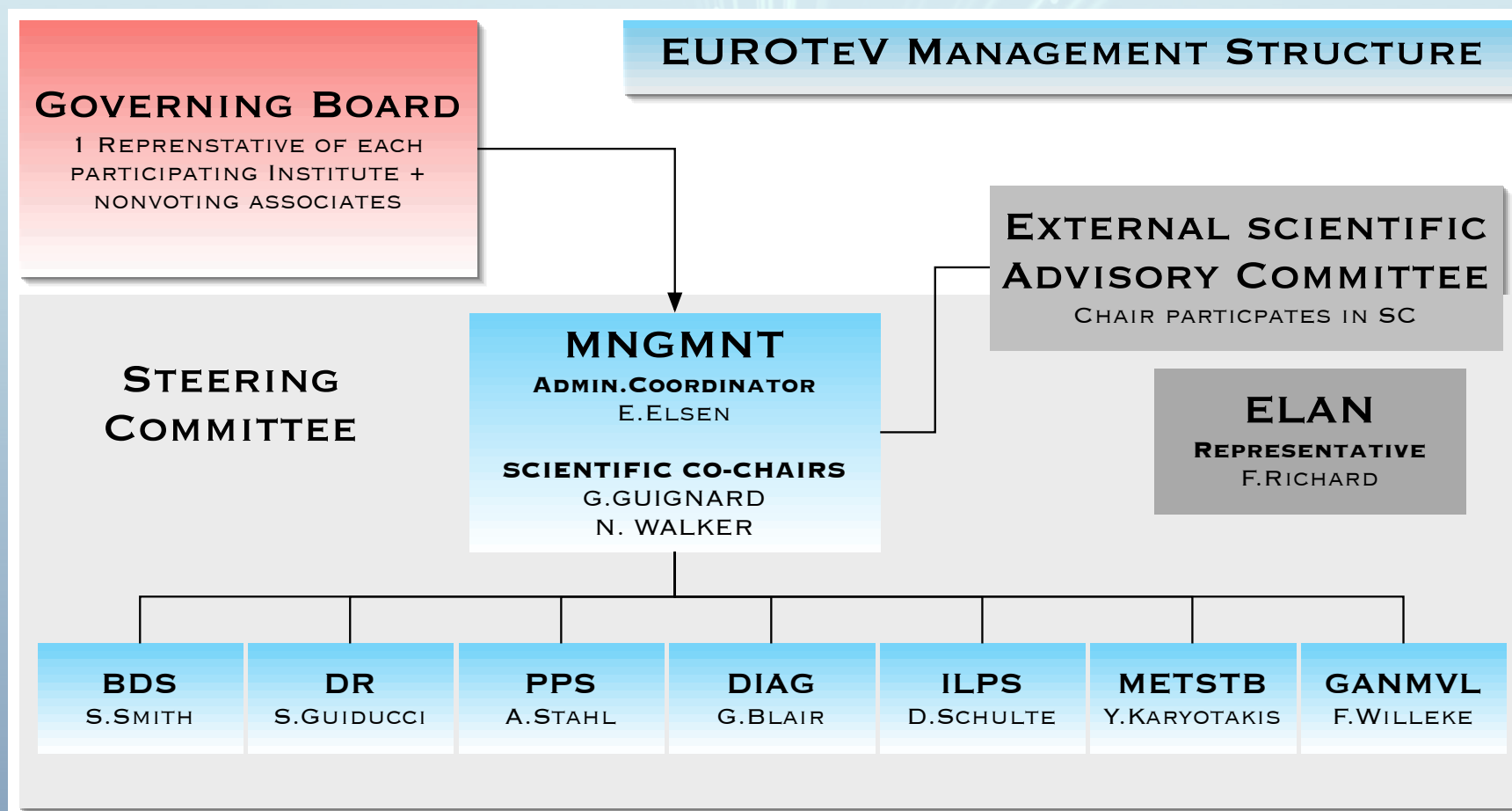
EUROTeV and the International Scene

- EU Design Studies is restricted to EU members (+associated institutions)
 - LC will be more international than the EU commonly envisages
 - Have to be prepared to react to the developments in the international arena
- 
- When drafting proposal
 - Obtain feedback from plans in America and in Asia
 - Establish early contacts to the Global Design Initiative
 - Seek international advice for EUROTeV

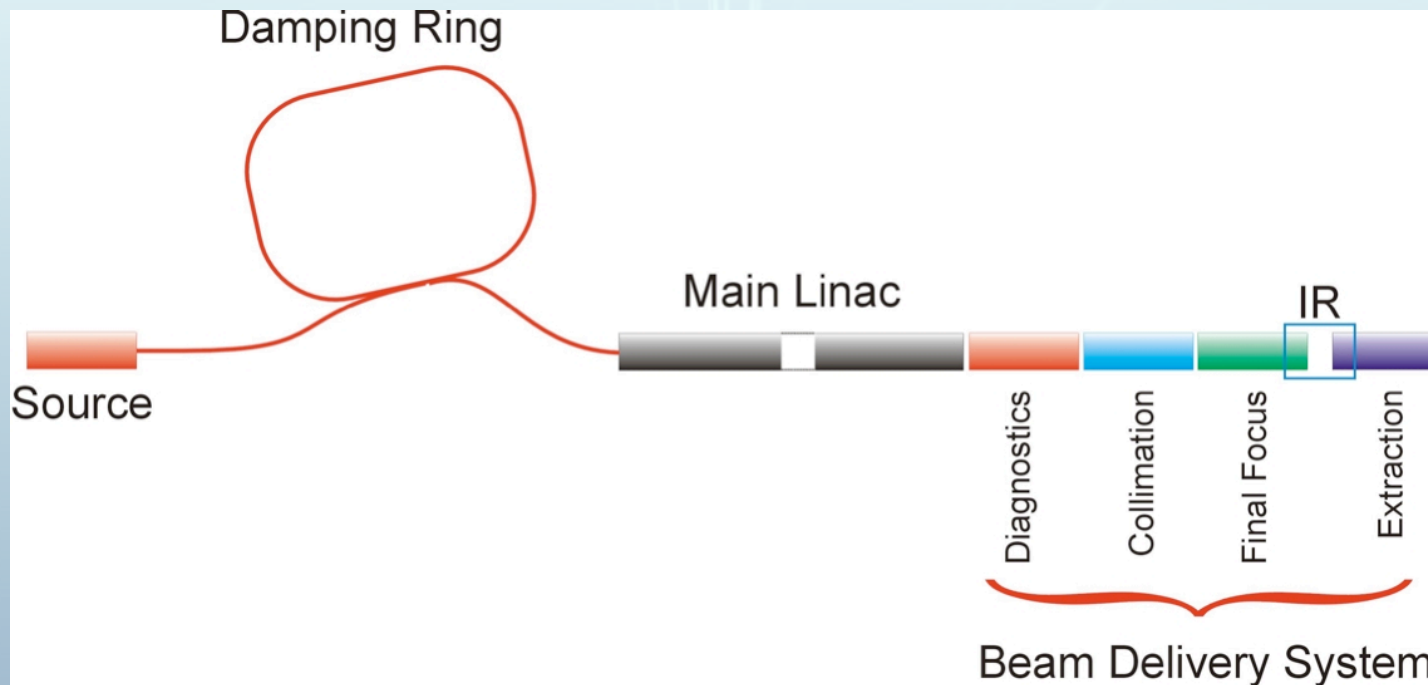




EUROTeV Structure



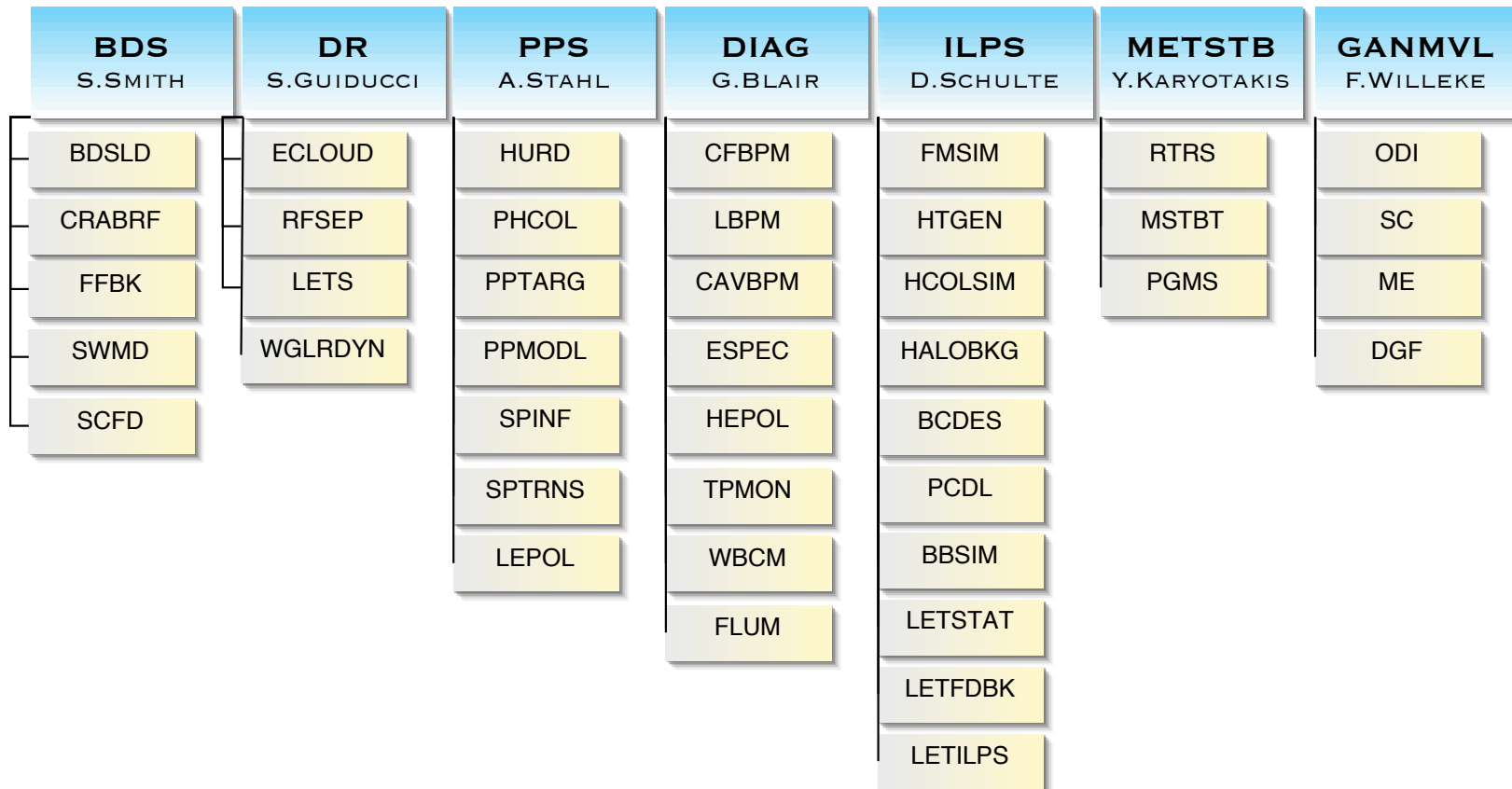
EUROTeV Topics



- concentrate on topics that are (largely) independent of technology choice
- match the topics to the expertise available in the participating laboratories

EUROTEV WORK PACKAGES & TASKS

(EXCEPT MNGMNT)





Participating Institutes

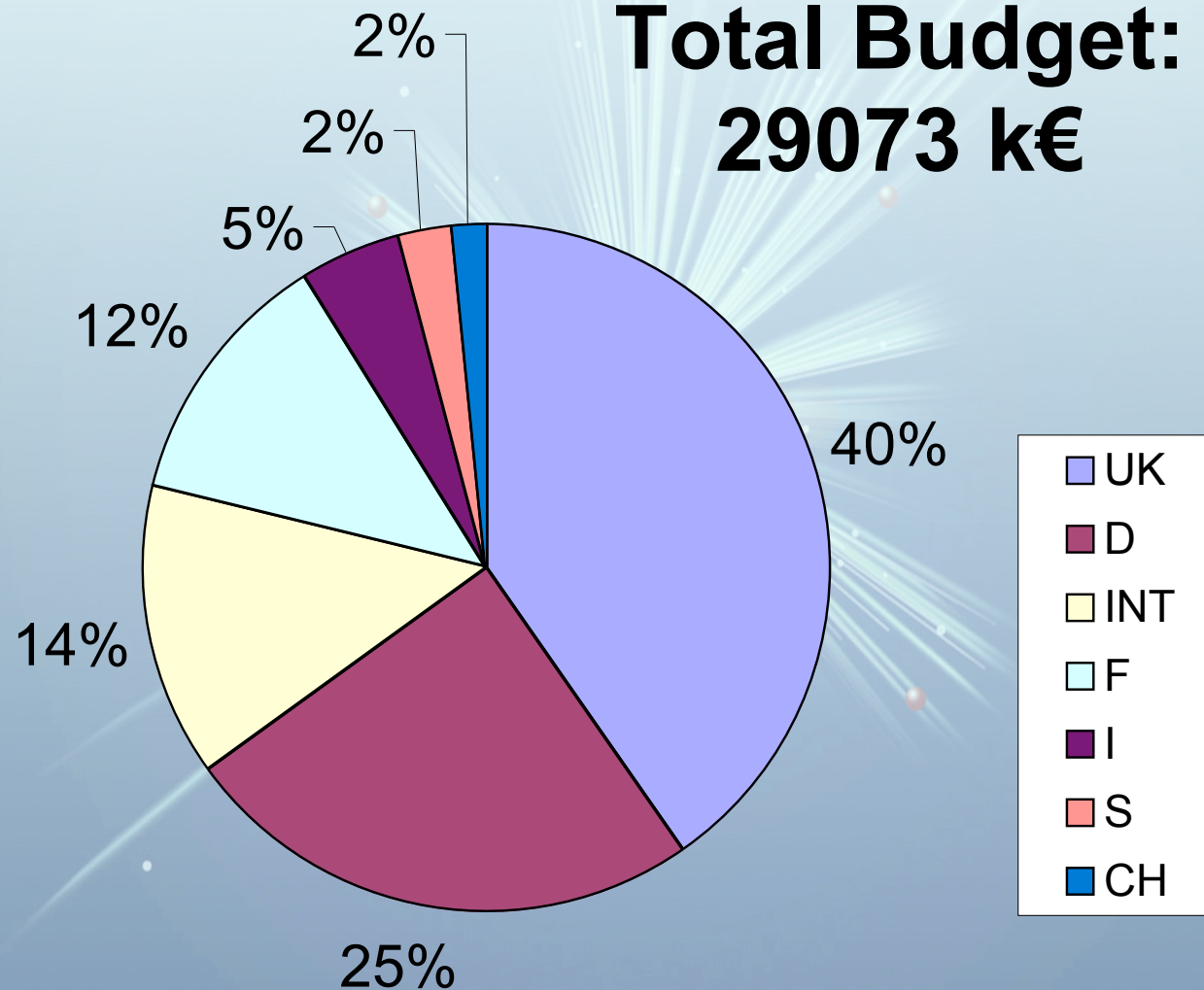
- 7+1 work packages
- 27 institutes

Institute	WP1: MNGMNT	WP2: BDS	WP3: DR	WP4: PPS	WP5: DIAG	WP6: ILPS	WP7: METSTB	WP8: GANMVL
CCLRC	X	C	X	X			X	
CEA		X						
CERN	C	X	X		X	C		
DESY	C		X	C	X	X	X	C
ELETTRA								X
FHG								X
GSI								X
INFN-LNF	X		C					X
INFN-Mi								X
INFN-Ro2								X
IPPP				X				
LAL					X	X		
LAPP	X						C	
PSI						X		
QMUL		X				X		
RHUL	X				C	X		
TEMF,TUD		X						
UBER				X				
UCAM					X			
UCL					X			
ULANC		X						
ULIV				X				
UMA		X				X		
UMH								X
UNIUD								X
UOXF.DL					X		X	
UU					X	X		



Financial Dimension

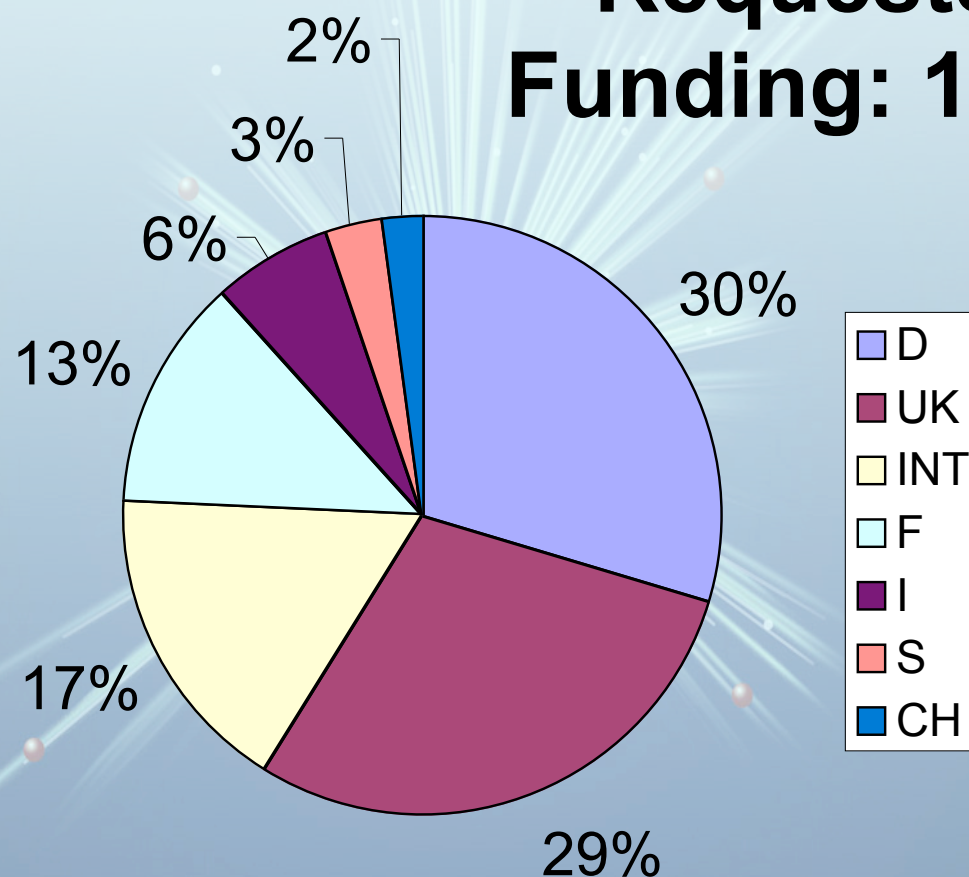
**Total Budget:
29073 k€**





Requested EU Contribution

**Requested EU
Funding: 11252 k€**





Conclusion

- European laboratories...
 - have demonstrated considerable interest in swiftly completing the remaining research towards a worldwide LC
 - have been able to allocate considerable resources around a Design Study that will help to advance the required research
 - have exposed the LC to the highest European political levels
 - are requesting considerable funds from the European Union
- Bid was submitted March 3, 2004
 - Expect feedback by July 2004
- Effort is well integrated into the worldwide global design effort (GDI)