

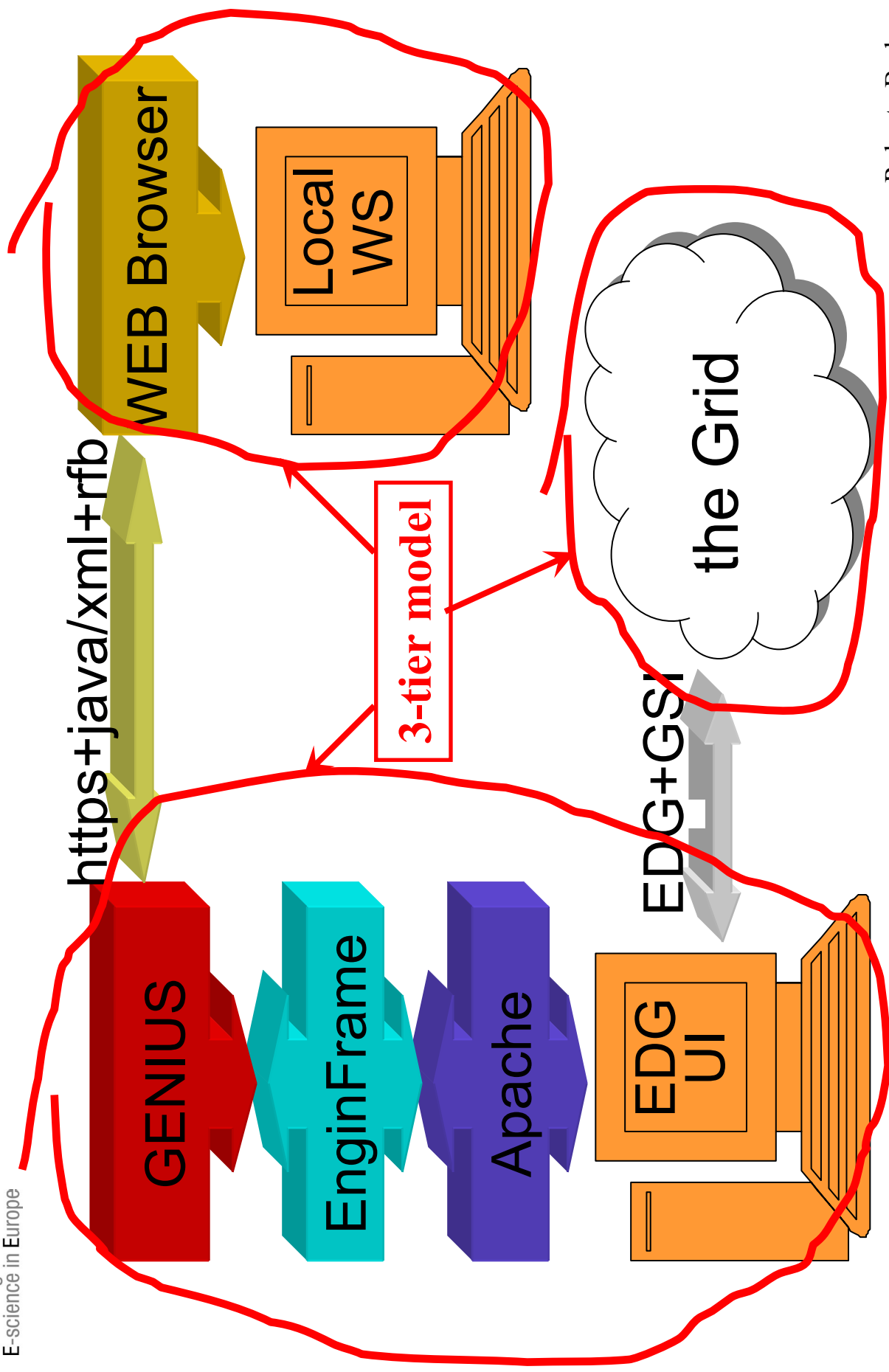
Some additional features of GENIUS



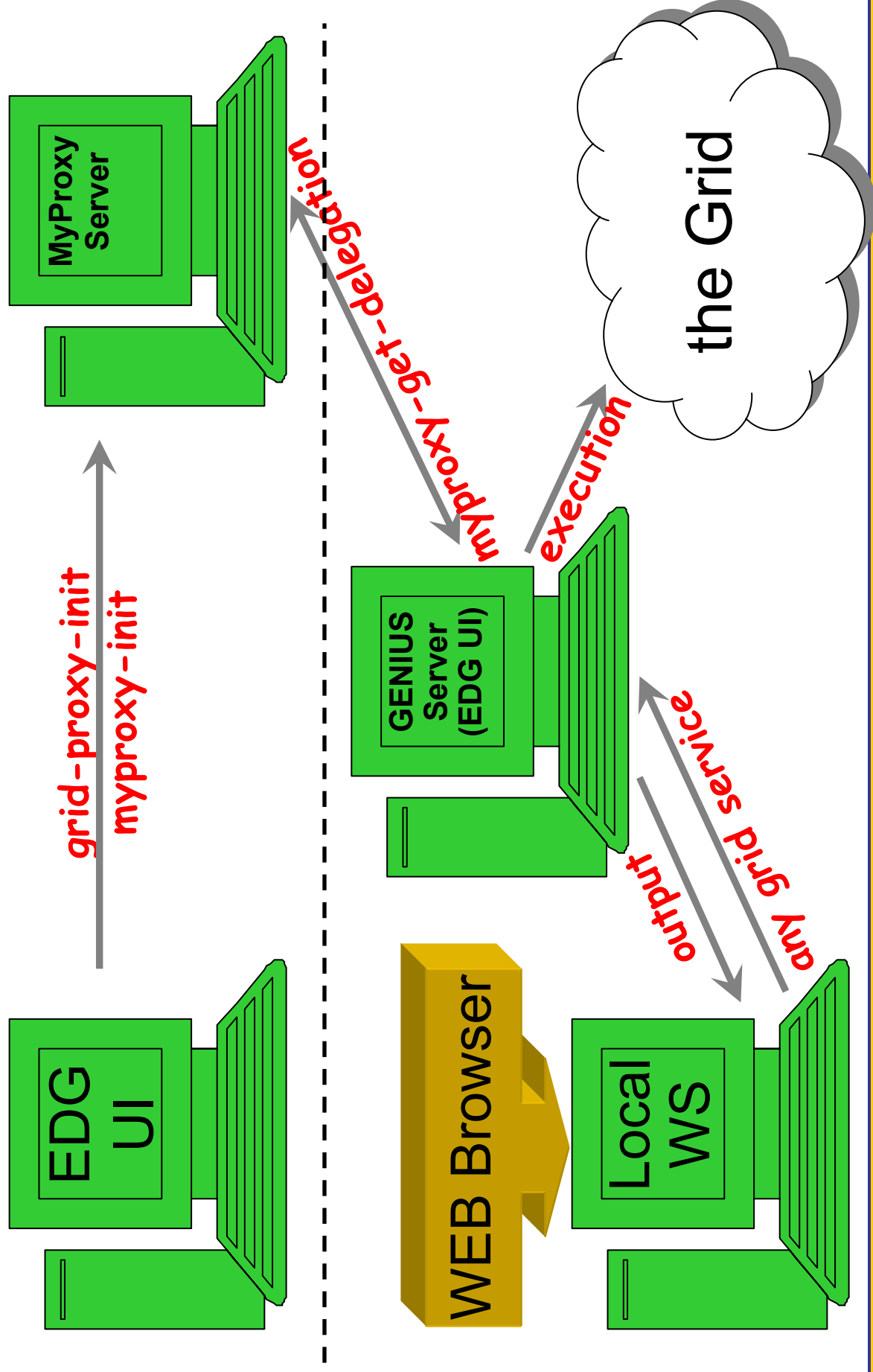
EGEE is funded by the European Union under contract IST-2003-508833

- We've been using pre-existing demo accounts in a cut-down version of GENIUS
- GILDA runs a dummy certification authority for early users
 - Using this via GENIUS is the next talk
- Non-demo, registered accounts give access to a fuller range of functionality
- (Also : GENIUS is being tailored to different VO's)

GENIUS: how it works



Grid authentication with MyProxy



GENIUS grid settings

Welcome to the GENIUS INFN GRID Portal - Mozilla

File Edit View Go Bookmarks Tools Window Help

http://www.genius.e-inf.nl

Home Bookmarks Instant Message WebMail Calendar Radio People Yellow Pages Download Customize...

INFN **enginframe** **GENIUS** Enabling Grids for E-science in Europe

Grid Enabled web environment for site Independent User job Submission

RB: cnaf_gridit VO: alice RLS: GRIDIT Your Data Logout

Grid Settings

With this service you can select the Resource Broker and the Replica Location Server you want to use. It is possible also to set the MyProxy Server on which you stored your temporary proxy to get from GRID Authentication.

Resource Broker (RB):

Replica Location Server (RLS):

MyProxy Server:

- File Services
- Security Services
- Job Services
- Data Services
- Info Services
- Monitoring Services
- Interactive Services
- Grid Settings
- Set VO
- Current VO Services
- Statistics
- Logout

powered by
EnginFrame 3.2
compliant with
LCG2
GRID.IT

Welcome to the GENIUS INFN GRID Portal - Mozilla

File Edit View Go Bookmarks Tools Window Help

http://www.genius.e-inf.nl

Home Bookmarks Instant Message WebMail Calendar Radio People Yellow Pages Download Customize...

INFN **enginframe** **GENIUS** Enabling Grids for E-science in Europe

Grid Enabled web environment for site Independent User job Submission

RB: cnaf_gridit VO: alice RLS: GRIDIT Your Data Logout

Grid Settings

With this service you can select the Resource Broker and the Replica Location Server you want to use. It is possible also to set the MyProxy Server on which you stored your temporary proxy to get from GRID Authentication.

Resource Broker (RB):

Replica Location Server (RLS):

MyProxy Server:

- File Services
- Security Services
- Job Services
- Data Services
- Info Services
- Monitoring Services
- Interactive Services
- Grid Settings
- Set VO
- Current VO Services
- Statistics
- Logout

powered by
EnginFrame 3.2
compliant with
LCG2
GRID.IT

GENIUS VO selection

Welcome to the GENIUS INFN GRID Portal - Mozilla
 File Edit View Go Bookmarks Tools Window Help
 https://genius.ct.infn.it/ Search
 Home Bookmarks Instant Message WebMail Calendar Radio People Yellow Pages Download Customize...

INFN Istituto Nazionale di Fisica Nucleare

- File Services
- Security Services
- Job Services
- Data Services
- Info Services
- Monitoring Services
- Interactive Services
- Grid Settings
- Set VO
- Current VO Services
- Statistics
- Logout

eGEE Enabling Grids for E-science in Europe

genius

enginframe

Grid Enabled web environment for site Independent User job Submission

RB: cnaf_gridit VO: alice RLS: GRIDIT Your Data Logout

Set VO

With this service you can select the Virtual Organization you belong to.

Virtual Organization (VO):

- ALICE (currently selected)
- ALICE (currently selected)
- GILDA
- ATLAS
- BABAR
- BIO
- Biomedical
- CMS
- D0
- DIANE
- Dissemination
- Earth Observation
- ITeam
- LHCb
- PANDA
- THEOPHYS
- TUTOR
- VIRGO
- WORLDGRID
- WPSix

GENIUS graphic job editor (work in collaboration with DATAMAT)

Welcome to the GENIUS INFN GRID Portal - Mozilla

http://genus.e.infn.it

ENabling Grids for E-science in Europe

genius

Grid Enabled web environment for site Independent User job Submission

Job Editor

Job Name /home/barbera/allroot.jdl

Executable hmvsh

Arguments script-short.sh

Standard Streams

StdOutput Remote Add to Output Sandbox

StdError Remote Add to Output Sandbox

Input Sandbox

grun_3_09_06.jar
Config_JBT.C
AllITSDigsProcPoints.C
AllITSTrackingWLC
AllITSDigsProcPoints.C

Output Sandbox

powered by
EnginFrame 3.2
compliant with
LCG-2
GRID.IT

Job Services

- up
- Single Job
- Multi Job
- List Available Resources
- Job Editor
- Job GUI
- Close Job GUI Session

Welcome to the GENIUS INFN GRID Portal - Mozilla

http://genus.e.infn.it

ENabling Grids for E-science in Europe

genius

Grid Enabled web environment for site Independent User job Submission

Job Editor

Job Name /home/barbera/allroot.jdl

Executable hmvsh

Arguments script-short.sh

Standard Streams

StdOutput Remote Add to Output Sandbox

StdError Remote Add to Output Sandbox

Input Sandbox

grun_3_09_06.jar
Config_JBT.C
AllITSDigsProcPoints.C
AllITSTrackingWLC
AllITSDigsProcPoints.C

Output Sandbox

Type = job

Executable = /bin/sh

MyProxyServer = ixshate0207.ceern.ch

StdOutput = allroot-out

StdError = allroot-err

Input Sandbox

grun_3_09_06.jar
Config_JBT.C
AllITSDigsProcPoints.C

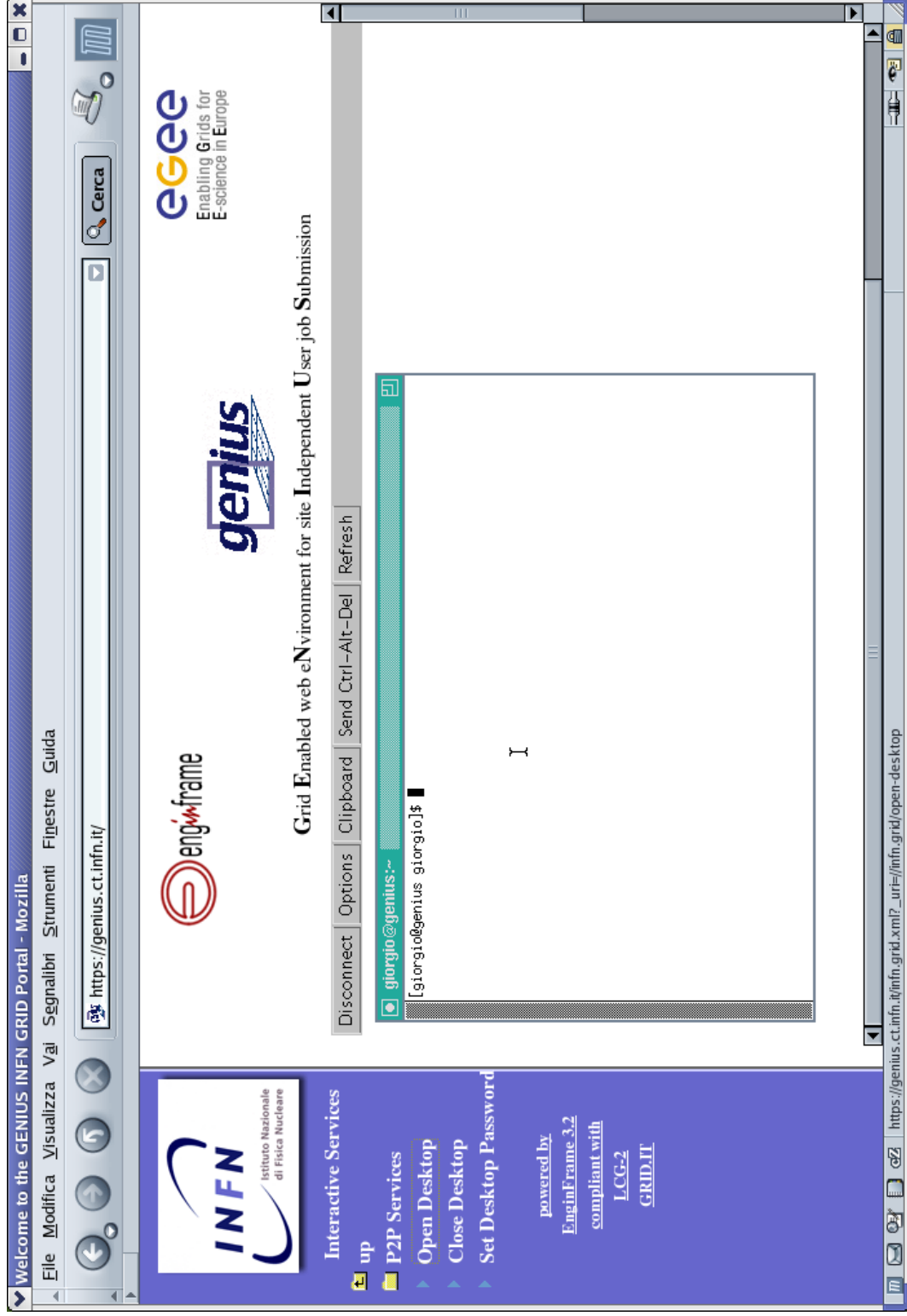
Output Sandbox

powered by
EnginFrame 3.2
compliant with
LCG-2
GRID.IT

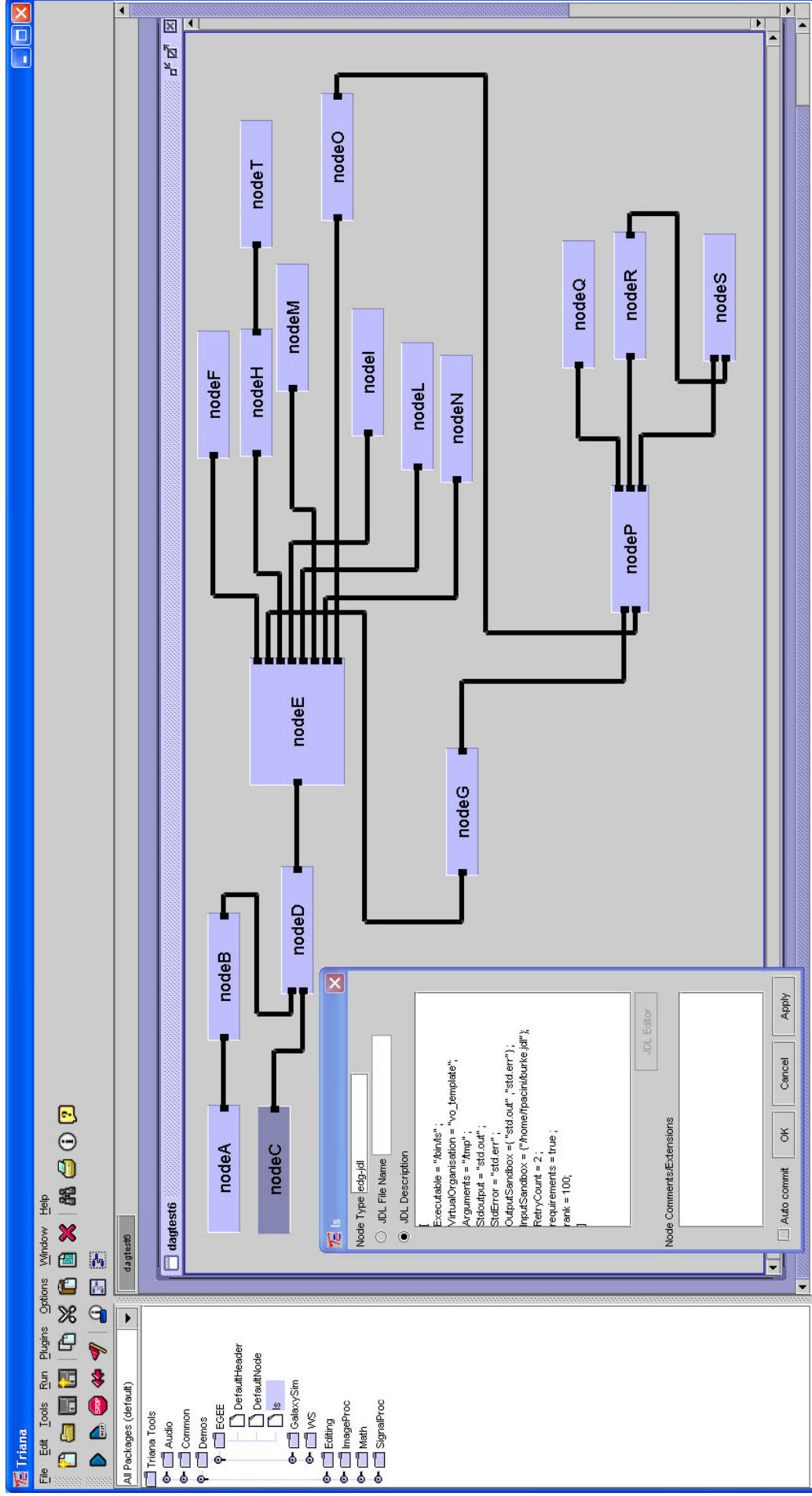
Job Services

- up
- Single Job
- Multi Job
- List Available Resources
- Job Editor
- Job GUI
- Close Job GUI Session

VNC on GENIUS



GENIUS graphic workflow editor (integration with TRIANA from GridLab)




GENIUS multi job submission

Welcome to the GENIUS INFN GRID Portal - Mozilla


File Edit View Go Bookmarks Tools Window Help

Address: https://genius.ct.infn.it/


Home Bookmarks Instant Message WebMail Calendar Radio People Yellow Pages Download Customize...




INFN
Istituto Nazionale
di Fisica Nucleare



enginframe



genius



eGEE
Enabling Grids for
E-science in Europe

Grid Enabled web eNvironment for site Independent User Job Submission

RB: cnaf_gridit
VO: alice
RLS: GRDIT
Your Data
Logout

Job Submission

Please, select the name of the group containing the jobs that you want to submit. If it is a new group, choose the JDL(s) files relative to the jobs. Then select the number of cycles of multi-job submissions that you want to submit.

Job Group Name:

JDL File(s):

Multi-Job Type:

Submission Cycles:

Remote File Browsing - Mozilla

<input type="checkbox"/>	alice_rc_def.conf	413
<input type="checkbox"/>	alice_rc_hbt_production.conf	422
<input type="checkbox"/>	alice_rc_hbt_production_mss.conf	423
<input type="checkbox"/>	alice_rc_mss.conf	414
<input checked="" type="checkbox"/>	alirroot.jdl	1,644
<input type="checkbox"/>	alirroot.test.jdl	1,136
<input type="checkbox"/>	authentication.log	294
<input checked="" type="checkbox"/>	csound.jdl	807
<input type="checkbox"/>	csound.orc	2,633
<input type="checkbox"/>	csound.seo	2,491
<input type="checkbox"/>	deficity.pov	1,951
<input checked="" type="checkbox"/>	demtools.jdl	1,158
<input type="checkbox"/>	dna.pov	4,731
<input type="checkbox"/>	edg_wl_u_gon_ruggeri.png	0
<input type="checkbox"/>	edglog.log	1,050

P Path: /home/barbera

GENIUS multi job queue

Welcome to the GENIUS INFN GRID Portal - Mozilla

File Edit View Go Bookmarks Tools Window Help

Home Bookmarks Instant Message WebMail Calendar Radio People Yellow Pages Download Customize...

Search

Address: <https://genius.ct.infn.it/>



INFN
Istituto Nazionale
di Fisica Nucleare



enginframe



eGEE
Enabling Grids for
E-science in Europe

Grid Enabled web environment for site Independent User job Submission

RB: catania_gridit VO: alice RLS: GRIDIT Your Data Logout

#	Job ID	Last Update	Destination	Status	Exit Code	Action
6	_O11R41j0z0rO9yk-h9WdQ	Thu Apr 15 19:29:11 2004	grid012.ct.infn.it:2119/jobmanager-legpbs-infinite	Running		Cancel
5	SPSM_X9bG1Ojday7ew8hA	Thu Apr 15 19:26:36 2004	grid012.ct.infn.it:2119/jobmanager-legpbs-infinite	Scheduled		Cancel
4	gEDcoARDsYJ3Afp9pFMfzw	Thu Apr 15 19:29:10 2004	grid012.ct.infn.it:2119/jobmanager-legpbs-infinite	Running		Cancel
3	tRr2Va5JOtbqQJAzvJApNw	Thu Apr 15 19:29:10 2004	grid012.ct.infn.it:2119/jobmanager-legpbs-short	Running		Cancel
2	CCEFFOji-44rMu63qS0Miw	Thu Apr 15 19:29:11 2004	grid012.ct.infn.it:2119/jobmanager-legpbs-infinite	Running		Cancel
1	CCEFFOji-44rMu63qS0Miw	Thu Apr 15 19:29:11 2004	grid012.ct.infn.it:2119/jobmanager-legpbs-infinite	Running		Cancel

Multi Job
up

- Job Submission
- Job Queue
- Job Data
- Clean Job Queues

powered by
[EnginFrame 3.2](#)
compliant with
[LCG-2](#)
[GRID.IT](#)

GENIUS monitoring services

INFN - GridICE - Grid Monitoring Service - Mozilla

File Edit View Go Bookmarks Tools Window Help

http://icomp7.in2p3.fr/topogrid-bin/cgi-applet.sh?file=trace.txt;datagrid;pcp+pos.dat;agrid

Home Bookmarks Instant Message WebMail Radio People Yellow Pages Download Customize...

Grid the eyes of the Grid

INFN production GRID

Site view VO view Geo view Grid

Select Site

Site	Slot#	SlotFree	SlotLoad
ba.infn.it	189	186	1%
bo.infn.it	30	30	0%
bo.ingv.it	24	24	0%
ca.infn.it	15	12	20%
cnaf.infn.it	-	-	-
cr.cnaf.infn.it	3162	2137	32%
ct.astro.it	0	0	-
ct.infn.it	336	300	10%
fe.infn.it	48	18	62%
le.infn.it	0	0	-
lnl.infn.it	144	115	20%
mi.infn.it	126	126	0%
na.infn.it	72	72	0%
oat.ts.astro.it	6	6	0%
pd.infn.it	198	198	0%
pg.infn.it	12	6	50%
pi.infn.it	21	15	28%
pv.infn.it	18	18	0%
roma1.infn.it	90	87	3%
to.infn.it	104	24	76%
ts.infn.it	6	6	0%
TOTAL	4601	3380	17%

Network Topology (trace.txt.dat;agrid;pop)

Network diagram showing various nodes and connections. Nodes include: ablene-gw.dez.be.geant.net (198.32.103.254), 8 nycm (62.40.103.254), marseille-pos1-0.cssi.renater.fr (193.51.179.222), GE-159.SIatLight.assoc.net (140.109.251.150), marseille-pos1-0.eb-iris2.reit.rediris.es (130.211.30.206.240.1), MAC-ESOT-0-0.EB-IRIS2.reit.rediris.es (130.211.30.206.240.1), ed008.cnaf.infn.it (154.100.108), and marselle-mon.dat (138.124.70.101).

Applet: NetBird started

GENIUS P2P services

The screenshot shows a Mozilla browser window with the address bar containing `https://genius.ct.infn.it/`. The page content includes:

- Navigation Bar:** Home, Bookmarks, Instant Message, WebMail, Calendar, Radio, People, Yellow Pages, Download, Customize...
- Logos:** **eng4frame** and **genius** (Enabling Grids for E-science in Europe).
- Header:** **GENIUS Chat Room for ALICE VO**
- Navigation:** RB: catania_gridit, VO: alice, RLS: GRDIT, Your Data, Logout
- Text:** Grid Enabled web eNvironment for site Independent User job Submission
- Chat Area:**
 - Options, Clear, Font: monospaced, 12, Users: 1
 - Message history:


```

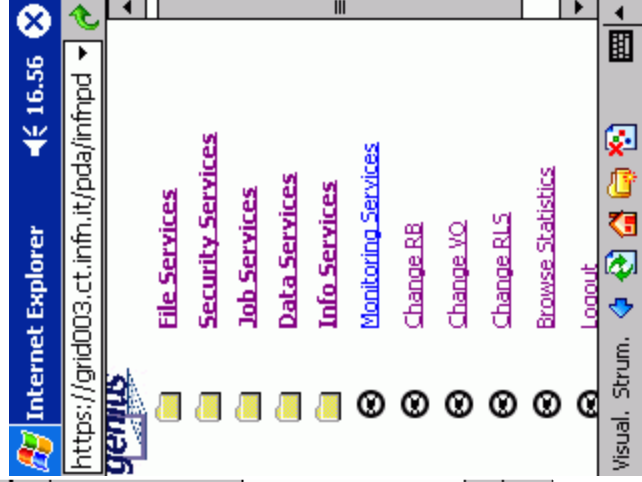
          ** Welcome on Chat Everywhere
          ** If you have any problem with this server, send a mail
          ** to roberto.barbera@ct.infn.it.
          ** You may type /help to see the available commands
          **
          <barbera> hello everyone !
          
```
 - Input field: barbera <-- Type here
- Footer:** Powered by [Chat Everywhere](#)

GENIUS for PDA (1/2)

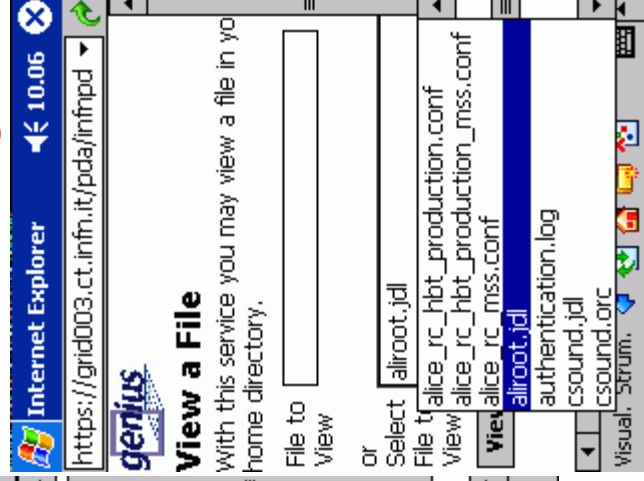
Home Page



Services



Remote file browsing



Remote file inspection



GENIUS for PDA (2/2)

Job submission

Internet Explorer | 11.32 | https://grid003.ct.infn.it/pda/infnpd

Job Submission

Please, select a JDL file to submit.

JDL File

- /home/barbera/csound.jdl
- /home/barbera/allroot.jdl
- /home/barbera/csound.jdl
- /home/barbera/demtools.jdl
- /home/barbera/hostname.jdl
- /home/barbera/hostname1.jdl
- /home/barbera/interactive.jdl
- /home/barbera/powray_defcity.jdl

Job monitoring

Internet Explorer | 13.19 | https://grid003.ct.infn.it/pda/infnpd

Job Queue

#	Job ID	JDL Name	Last Update	Destination	Status	Exit Code	Action
4	bYqRSTINJoW6xOuwrzYKRG	/home/barbera/hostname.jdl	Thu Oct 9 07:52:14 2003	testbed001.cnaf.infn.it:211	Done	0	Get Output

RC browsing

Internet Explorer | 11.24 | https://grid003.ct.infn.it/pda/infnpd

Current directory is /

- [data/prova](#)
- [data.out](#)
- [data.out1](#)
- [data.out2](#)
- [data.out3](#)
- [datatest](#)
- [datatest1](#)
- [edglog.log](#)
- [hostname.out](#)

GridICE integration

Internet Explorer | 17.09 | http://edt002.cnaf.infn.it:8081/grid

JOB Load

Site	Computing power	JOB Load
ba.infn.it	3064	0%
bo.infn.it	4797	0%
ct.infn.it	2798	0%
fe.infn.it	21942	0%
inl.infn.it	2903	0%
mi.infn.it	3972	0%
na.infn.it	n/a	n/a
pd.infn.it	60166	0%
to.infn.it	n/a	n/a
ts.infn.it	n/a	n/a

GENIUS for cell phone

