



Enabling Grids for
E-science in Europe

www.eu-egee.org

This product includes material developed
by the Globus Project (<http://www.globus.org/>).

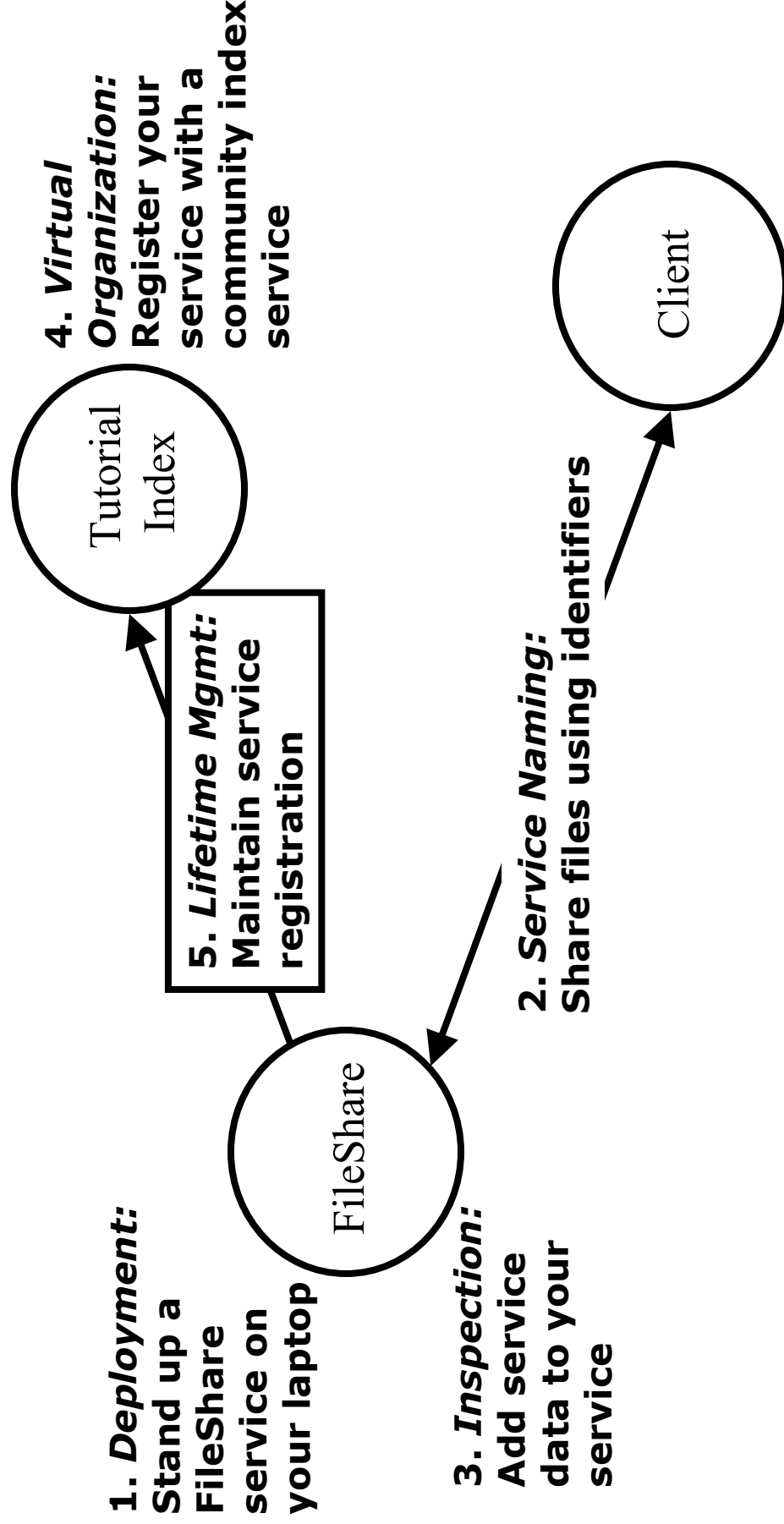
Exercise 5



How to Build a Grid Service Using GT3

- Overview of Grid Services and GT3
 - Build a Grid Service
 - Overview
 - 1. Deployment: Stand Up a FileShare Service
 - 2. Naming: Share Files using Identifiers
 - 3. Inspection: Add Service Data
 - 4. Virtual Organization: Register with a Community Index
 - **5. Lifetime Management: Maintain service registration**
 - 6. Discovery: Find a File
 - 7. GT3 Security: Share Files Securely
- Time permitting:**
- 8. Transience: Create and Destroy FileShares
- Publish your Grid Service: The GTR

Overview of Tutorial Content



Soft state

- We need a mechanism to clean up old/unwanted state
- A service group has an remove operation, but this is not enough. For example, what happens if a service dies without removing itself?
- All of our state has a limited lifetime. If a service is still alive and wants to remain registered, it must keep indicating its interest in that state.

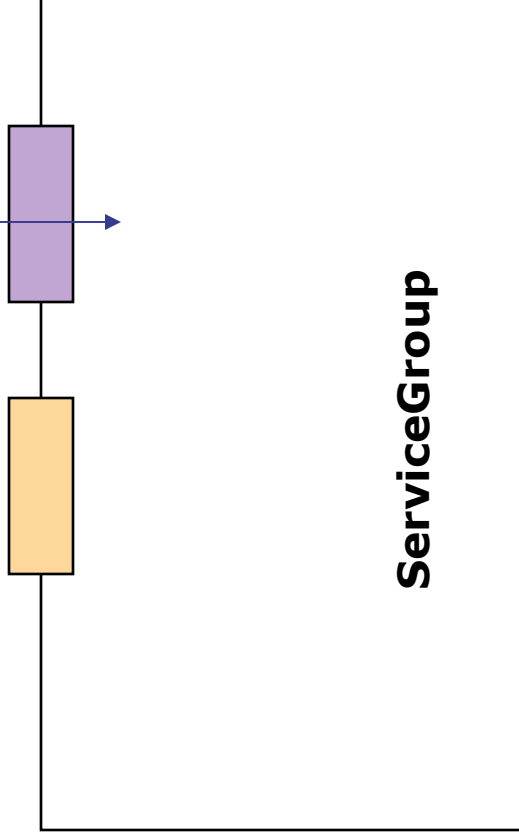
Lifetime Management



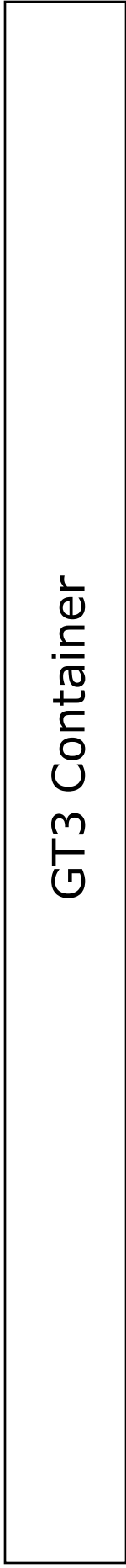
(registration provider)

add

ServiceGroup
Registration
portType



ServiceGroup



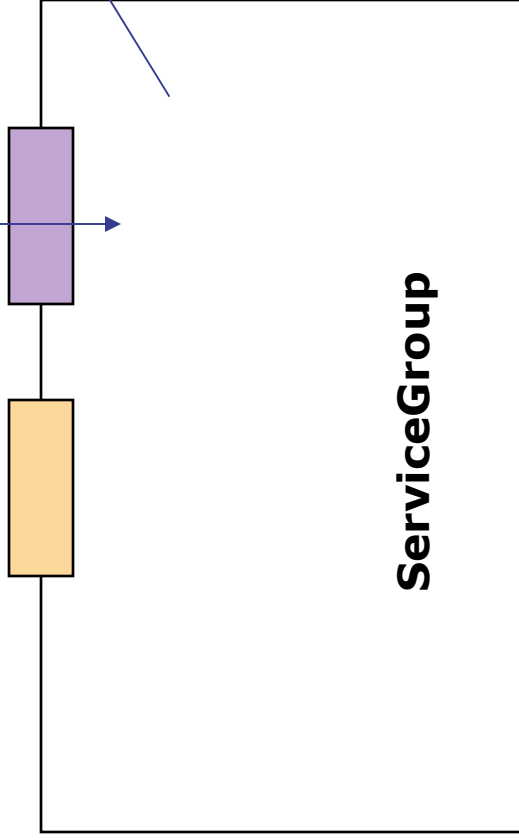
Lifetime Management



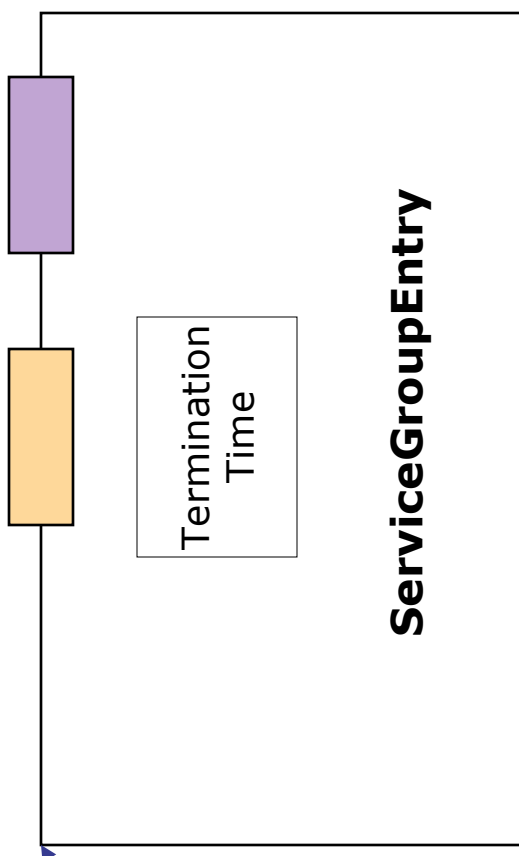
(registration provider)

add

ServiceGroup
Registration
portType



GridService
portType



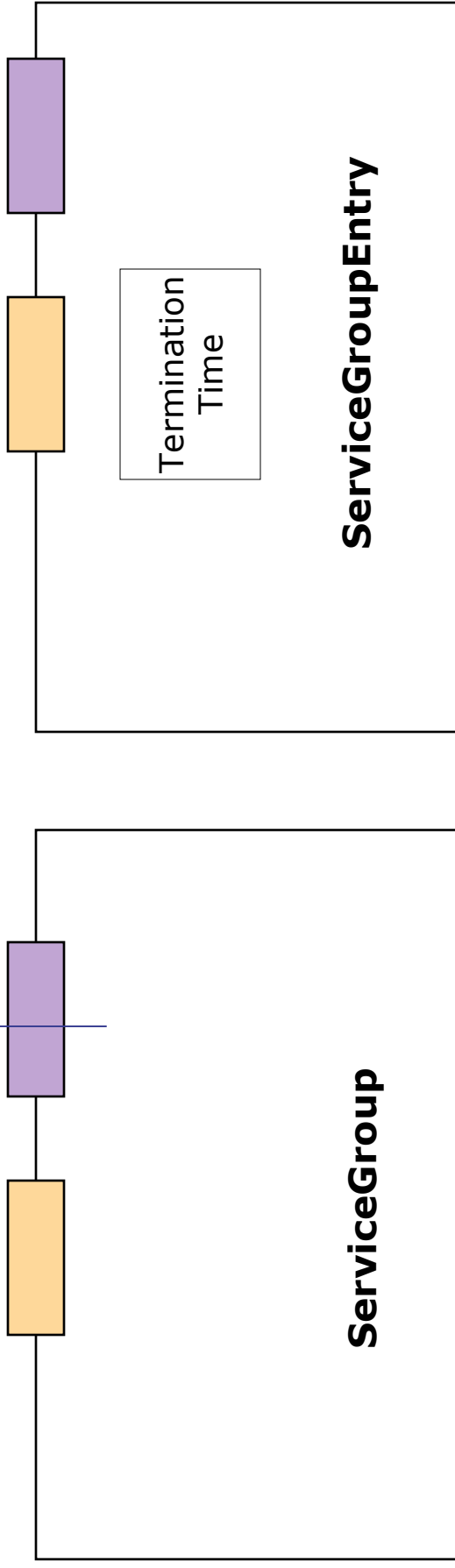
GT3 Container

Lifetime Management



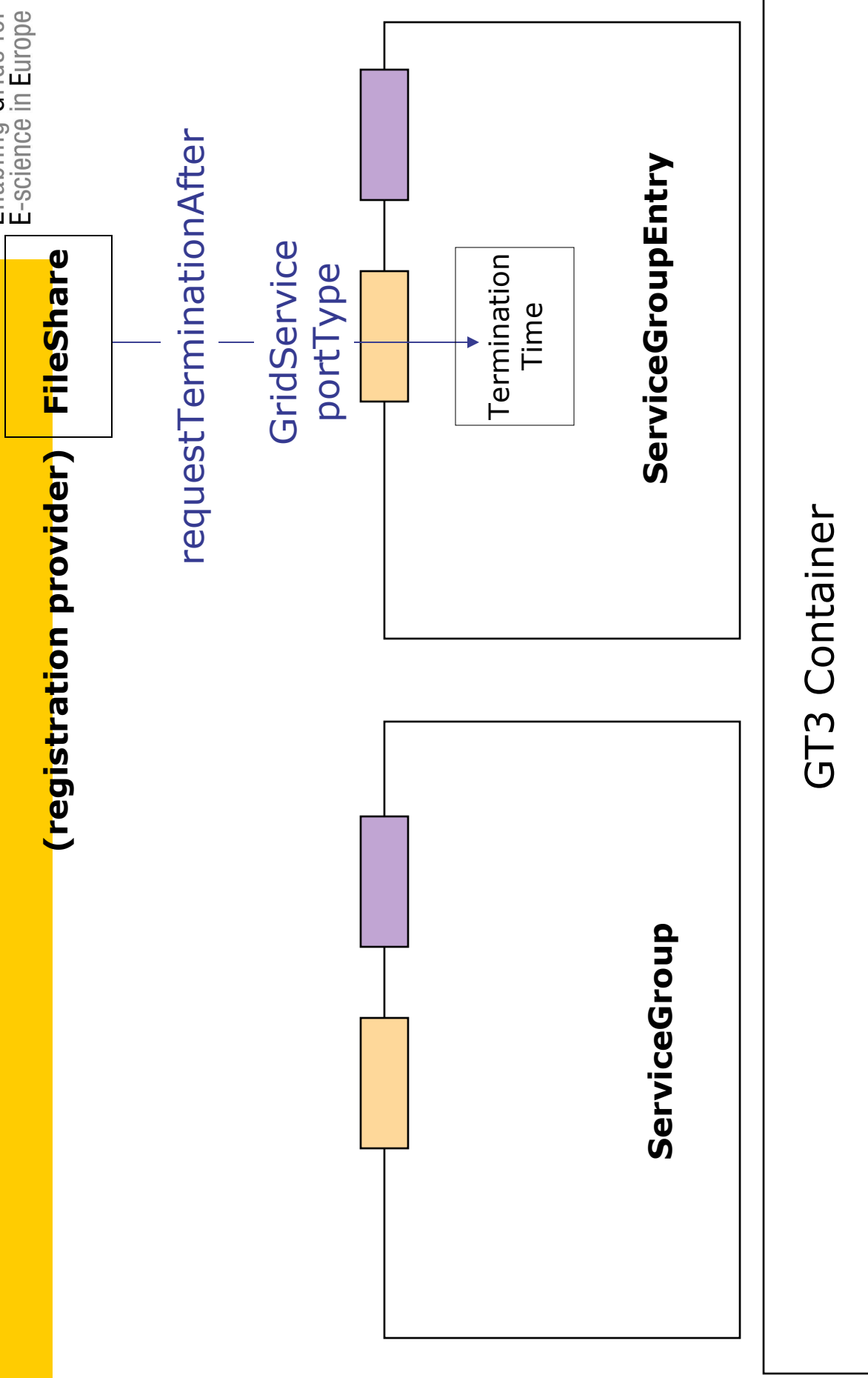
<ServiceGroupEntry GSH>

GridService
portType



GT3 Container

Lifetime Management



Lifetime Management

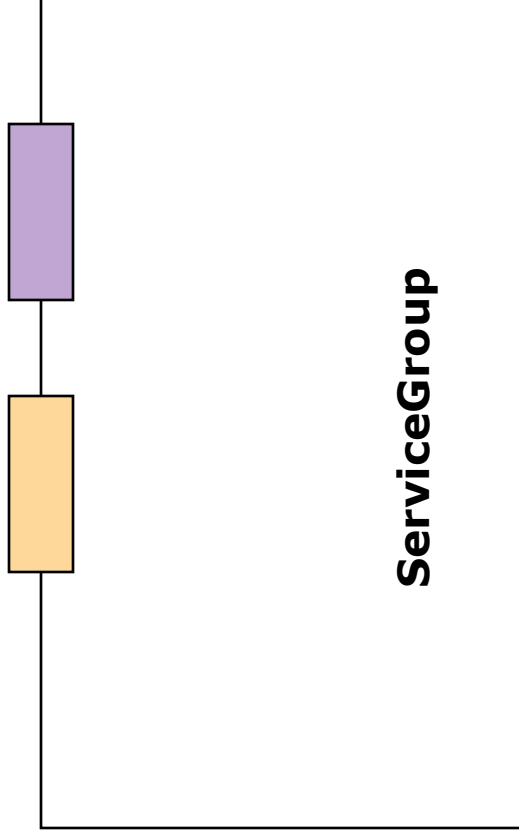
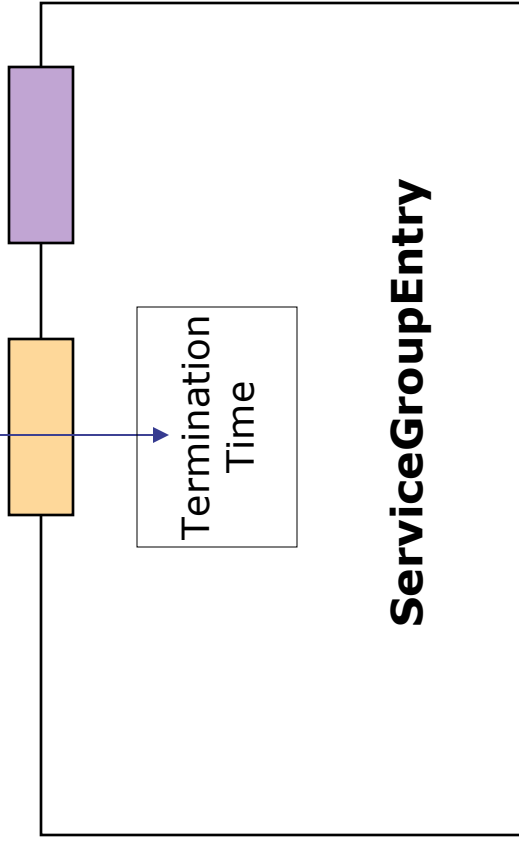
FileShare

(registration provider)

Example of soft-state lifetime management:
The ServiceGroupEntry goes away if the FileShare service disappears

requestTerminationAfter

GridService
portType



GT3 Container

SDE Attributes

- SDEs can contain OGSF-defined attributes describing quality/lifetime of the data they contain
 - goodFrom: start of validity
 - goodUntil: end of validity
 - availUntil: Will be purged after this time