



# Advanced Network for Research, Education, and Innovation

Jill P. van Nortwick- Government Interface  
Charles Jarvie- Implementation Manager



## **International Players in Global Research and Education Networks**





Complex global environment

Dependent on IT

Fundamental scientific discoveries

very high-speed ubiquitous network

substantial computing power

multidisciplinary approach

collaborative culture



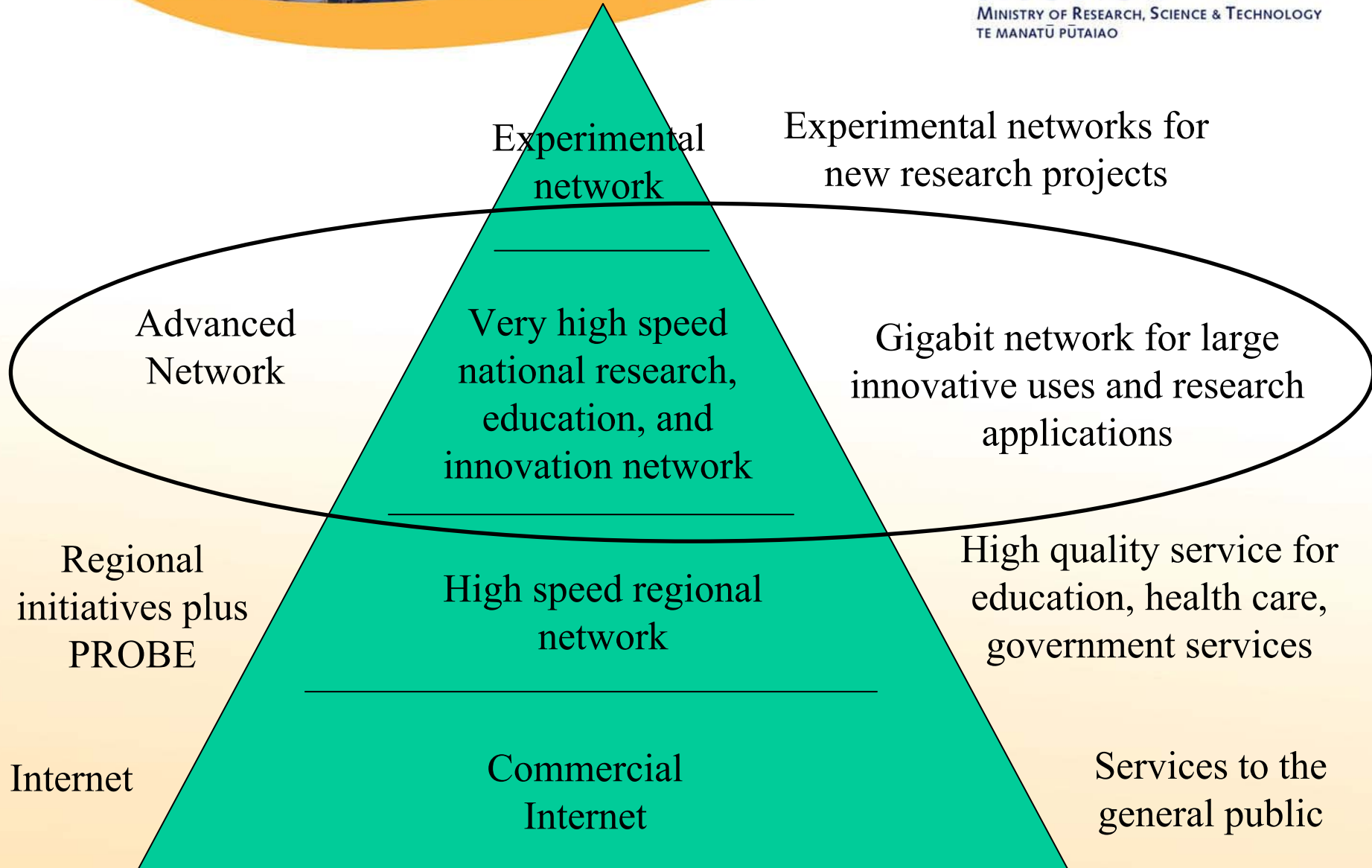
## Vision for New Zealand RS&T

An *innovative* and globally-connected sector, with state of the art information technology infrastructure that encourages *collaboration*, empowers people who have been excluded from the frontiers of scientific research, and *stimulates* researchers to seek new challenges and create new business opportunities.



## Current programme

- Capability Build
  - Policy
  - Initiatives
- Network Implementation
  - Architecture
  - RFP/Commercial negotiations for network components
  - Legal
    - Regulations
  - Governance





## Advanced Network Objectives

1. Enable leading edge e-science
2. Facilitate universal connectivity throughout NZ and the international research and education community
3. Encourage broad participation by research, education and innovation sectors in NZ through accessible technology and reasonable pricing
4. Connect the research and education sector to the broader innovation community for pre-commercial, R&D based collaboration
5. Facilitate participation by multiple telecommunications sector partners so as to ensure the greatest possible flexibility for ongoing evolution



## Early view of the implementation process

- Finalisation of architecture and design (review and utilise extensive work done by NGI-NZ). Share with:
  - Stakeholders
  - User organisations use to inform BaU engagements with Telcos/Service Providers etc to assist in PoP access/aggregation and on-campus arrangements
- Form new structure to own Network (parallel activity)
- Prepare and release RFI/RFP document(s)
- Prepare provisional pricing model
- Approve final implementation approach based on RFI/RFP responses and negotiated outcomes.
- Execute contracts – staged rollout expected.





## Communications and collaboration

- Steering Group (chaired by MoRST)
  - CRIs (ACRI)
  - Universities (NZVCC)
  - NGI-NZ
  - Govt. Ministries
- User organisation direct interaction with project
- Vendor/Service Provider participation
- Must occur freely at all levels of organisations



## Impact on You!

- We want to support your efforts to
  - broaden and deepen your research through multidisciplinary collaboration
  - share expensive assets such as data storage, computing power, and instrumentation



## Impact on You!

- We'll need your help to
  - drive the priorities of the capability build programme (via MoRST)
  - be actively involved in the task groups for applications and middleware (via NGI-NZ )



[charles.jarvie@morst.govt.nz](mailto:charles.jarvie@morst.govt.nz)

917-3051

[jill.vannortwick@morst.govt.nz](mailto:jill.vannortwick@morst.govt.nz)

917-2911