



Enabling Grids for E-science

Production Demonstrations: Introduction

Marc-Elian Bégin – NA1/NA2 - CERN

EGEE 1st EU Review

09-11/02/2005

www.eu-egee.org



Part 1

- **Grid Production Service Operations**
 - What does it mean to operate a Production Grid of more than 100 sites

Part 2

- **Demonstration of 3 real Grid applications from different disciplines**

- **A day in the life of a Grid operator**
- **Hélène Cordier (IN2P3)**
- **Piotr Nyczyk (CERN)**
- **Simple but powerful process for**
 - Monitoring
 - Troubleshooting
 - Resolution
 - Knowledge gathering

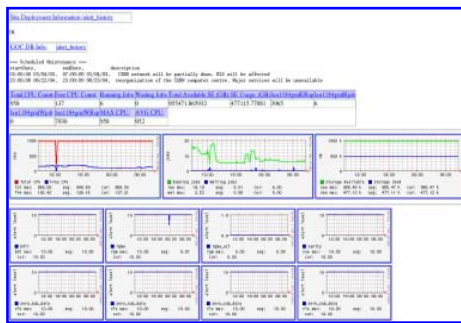


Grid Production Serv. Ops Highlights

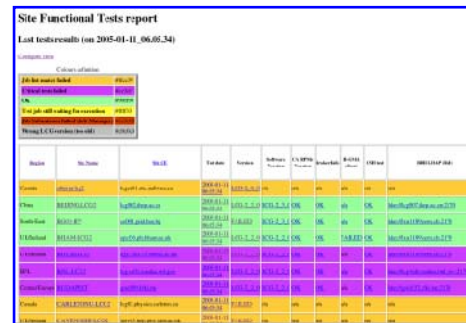
Enabling Grids for E-science



GIIS Monitor



GIIS Monitor graphs



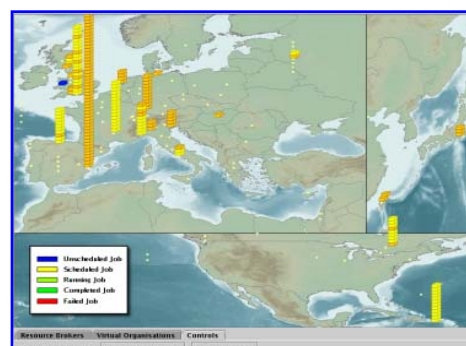
Sites Functional Tests



GOC Data Base



Scheduled Downtimes



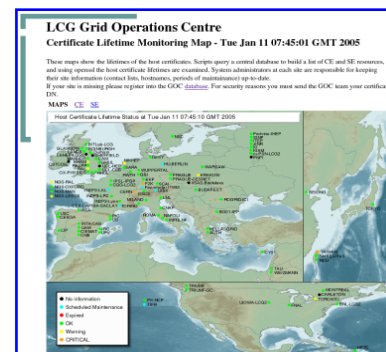
Live Job Monitor



Gridce - VO view



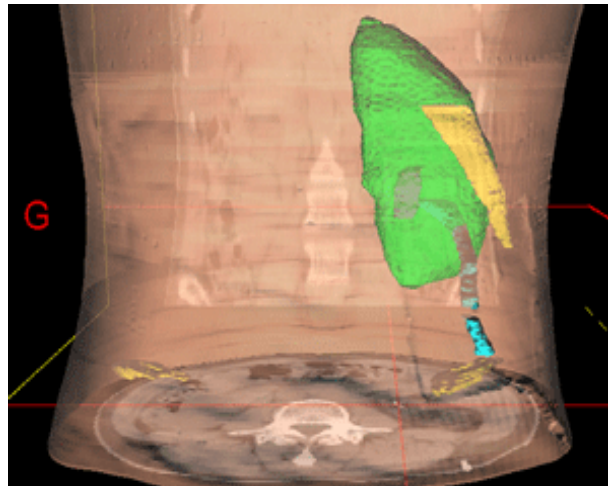
Gridce - fabric view



Certificate Lifetime Monitor

- **3 different disciplines:**
 - gPTM3D
 - Cecile Germain-Renaud and Romain Texier
 - CNRS
 - Radiological data interactive segmentation and analysis
 - EGEODE
 - Dominique Thomas and Gaël Youinou
 - Compagnie Générale de Géophysique
 - Geophysics commercial application
 - GEMS
 - Antonio Laganà and Osvaldo Gervasi
 - University of Perugia
 - Molecular Simulator (Chemistry)

- Reconstruction in 3D of specific organ



- **Setup**

- All applications integrated with LCG-2 middleware
- 3 demos running from a laptop accessing the Grid
 - gPTM3D: Directly (running on Production Service)
 - GEMS: Through GENIUS Portal (running on GILDA)
 - EGEODE: Idem

- **They show different stages of deployment: from GILDA to the Production Service**

- **Common issues**

- Interactive jobs
- Commercial license issues
- Outbound connectivity

Show Time!!