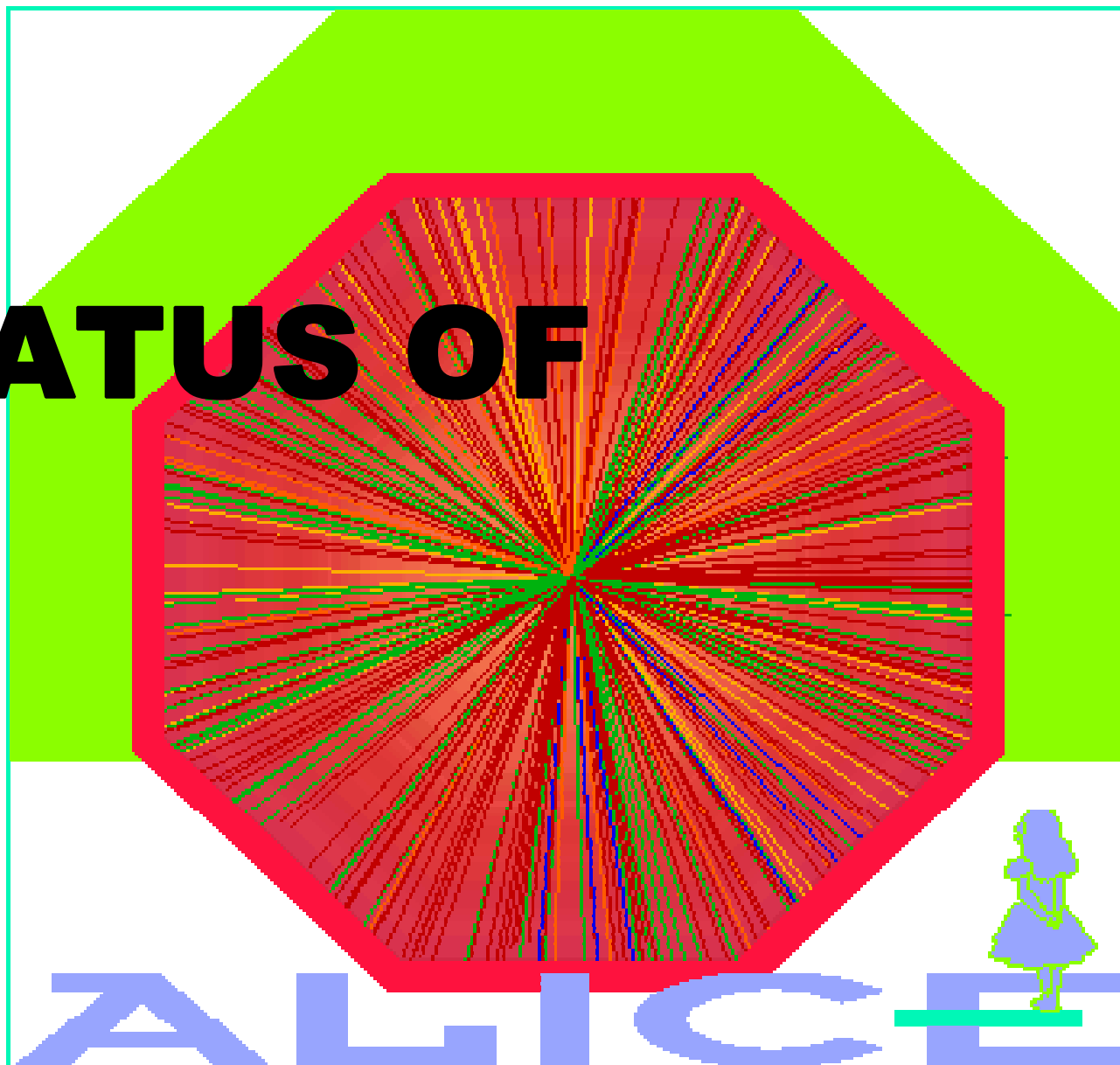
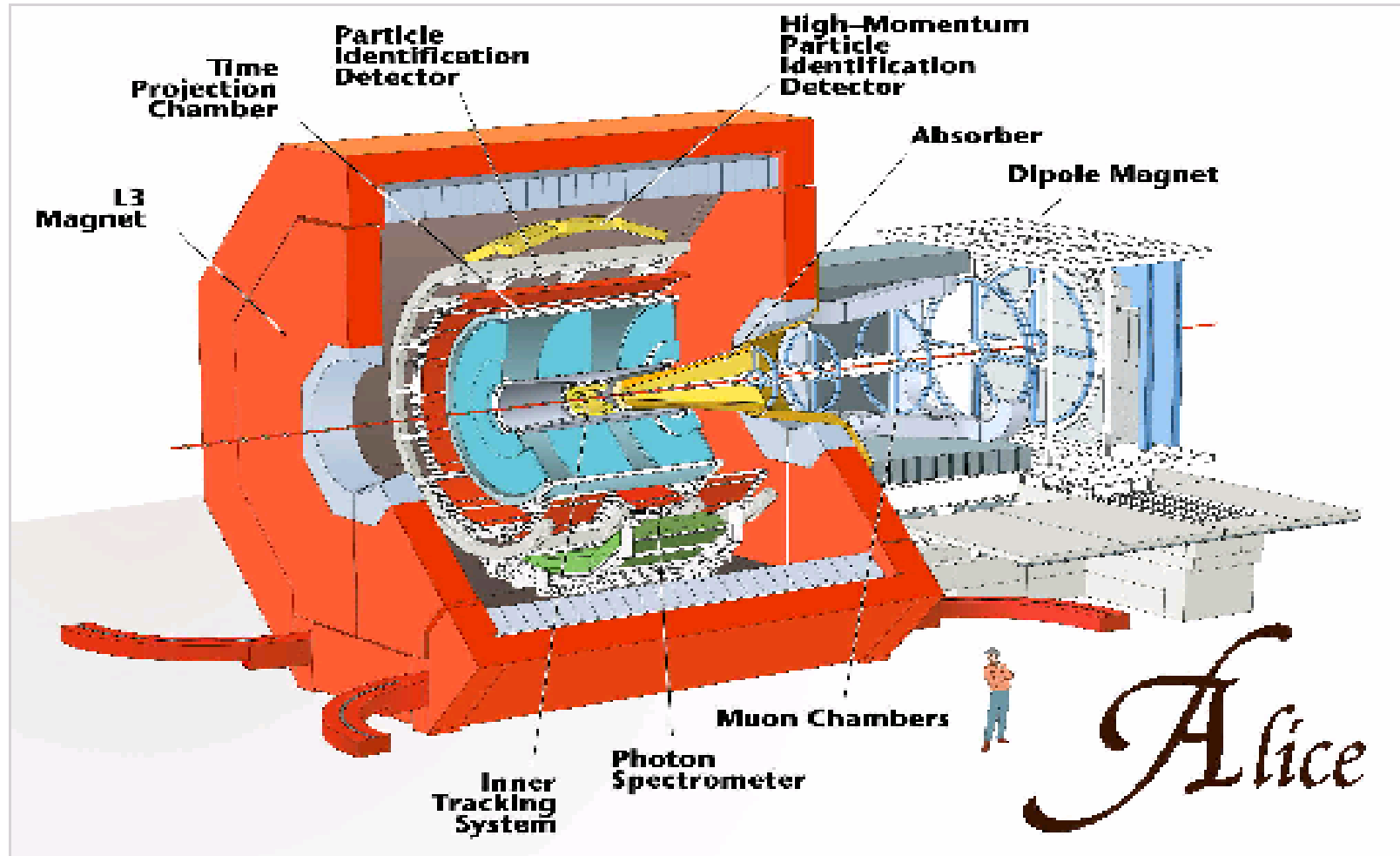
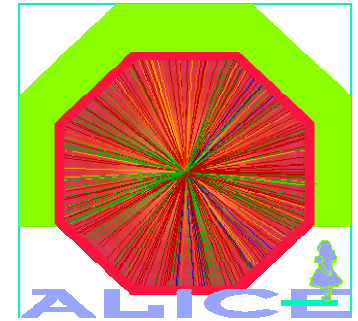


STATUS OF



General Layout



Solenoid



Solenoid doors on RB26 side closed



Dipole foundation finished

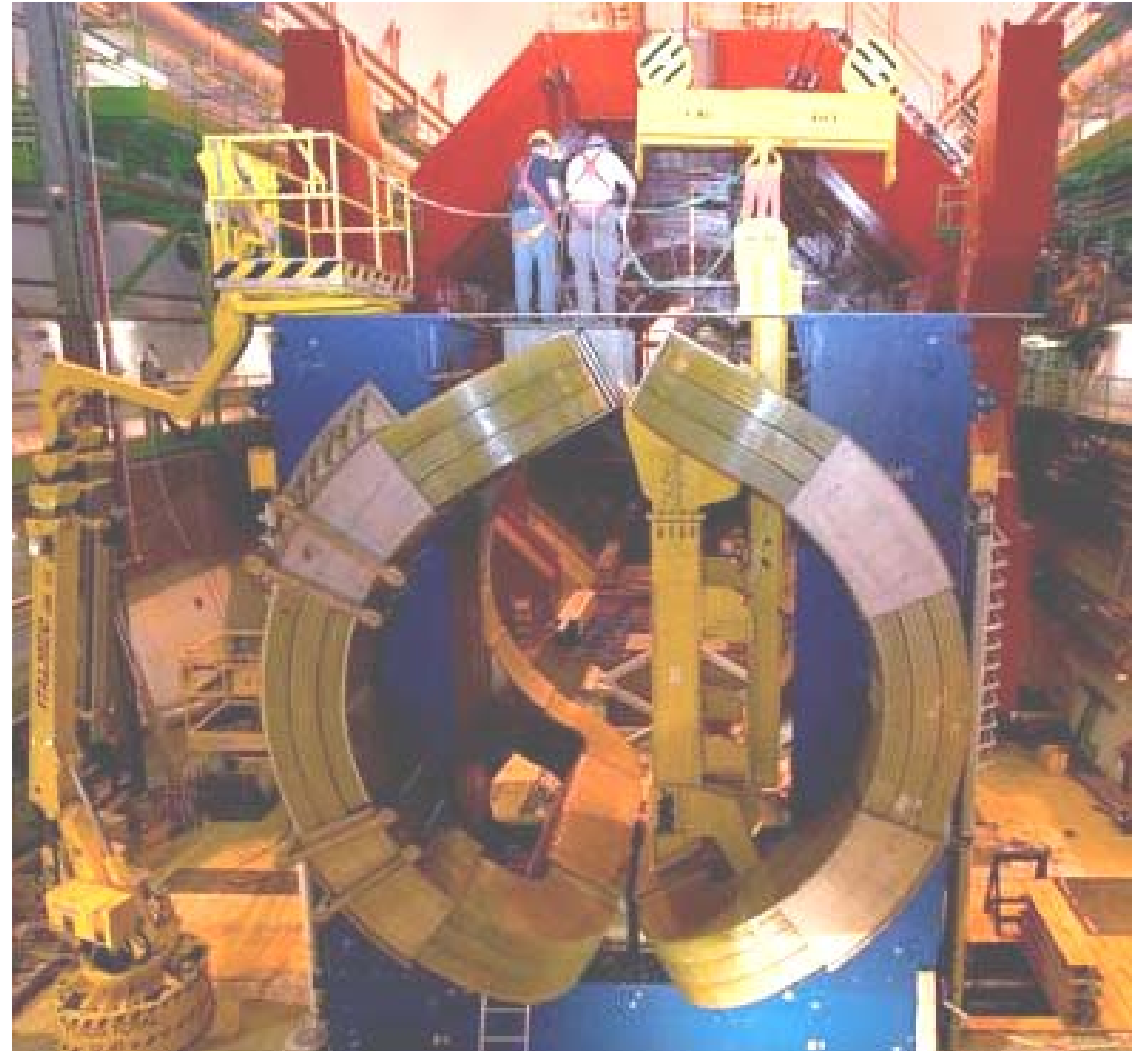
Split Oct '04

H.Taureg

Dipole



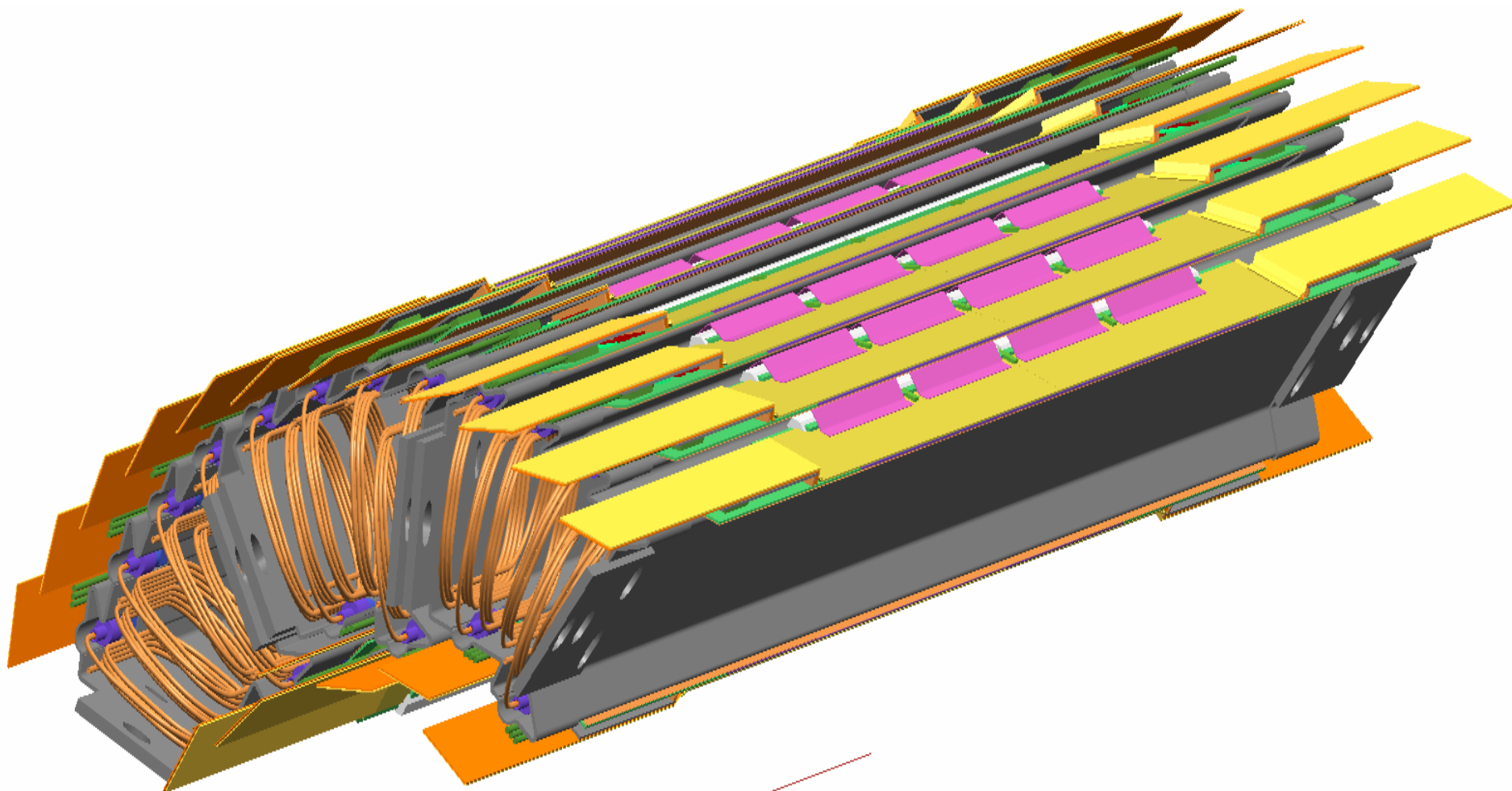
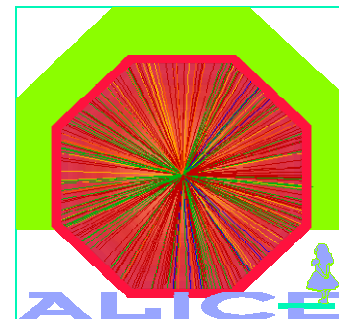
- Dipole ready for electrical tests
- move to final position starting in November 04
- Field mapping in 2005



Split Oct '04

H.Taureg

ITS-Pixel



Split Oct '04



H.Taureg

ITS-Pixel



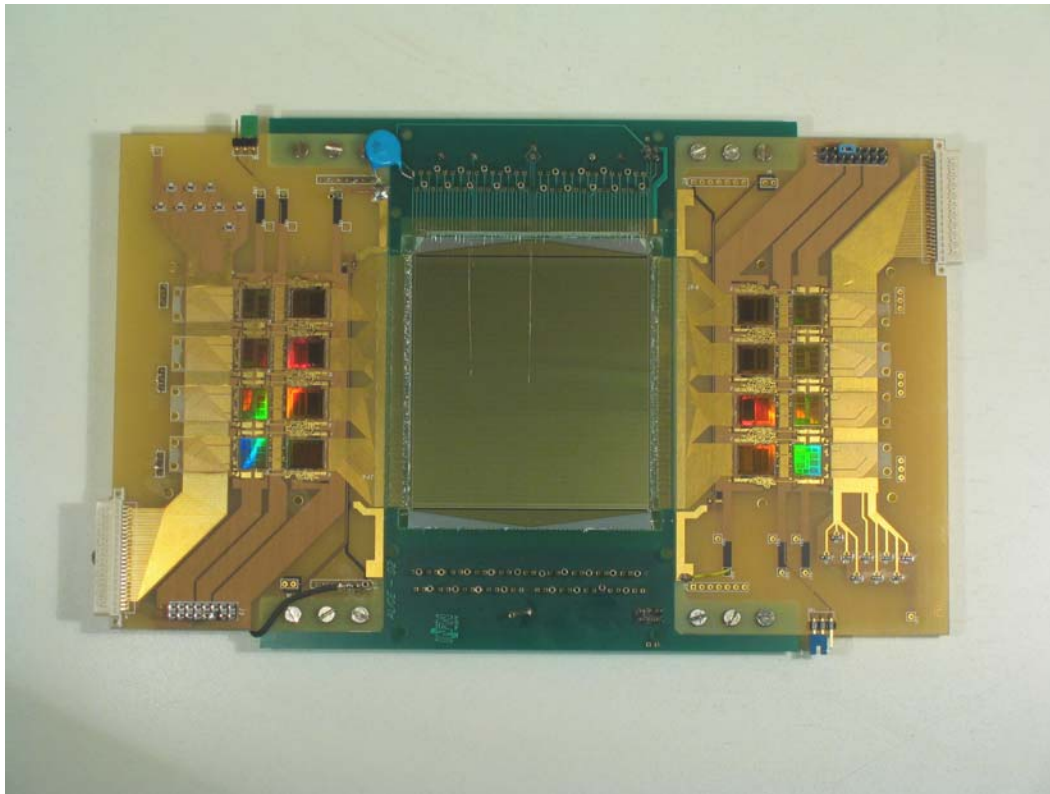
- Start series production end of October



ITS-Drift



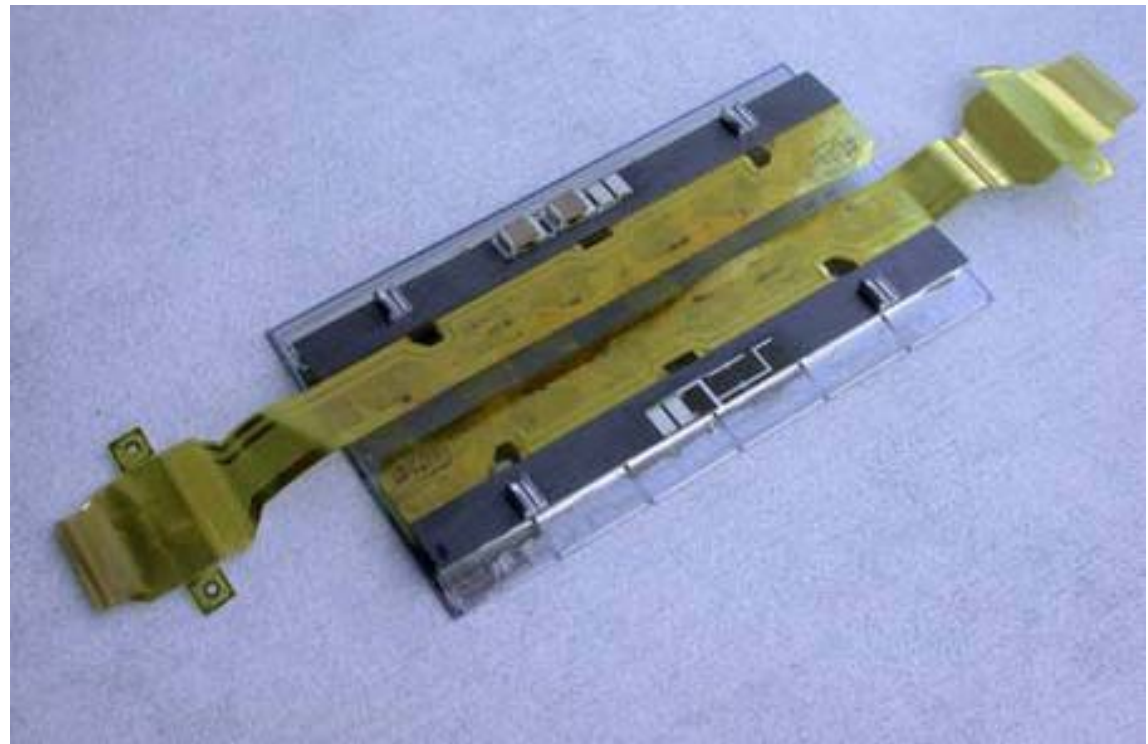
- Series production to start by end of October
- Expect about 15% of modules assembled by end 04
- All electronics components available by the end of the year



ITS-Strip



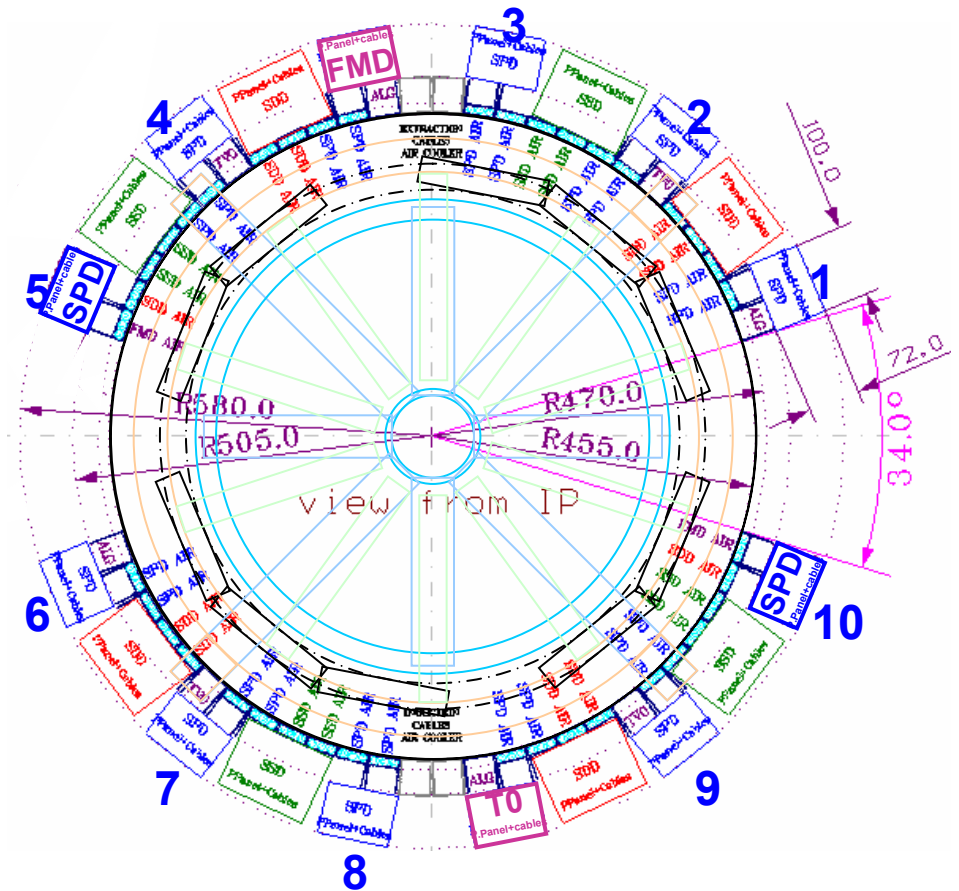
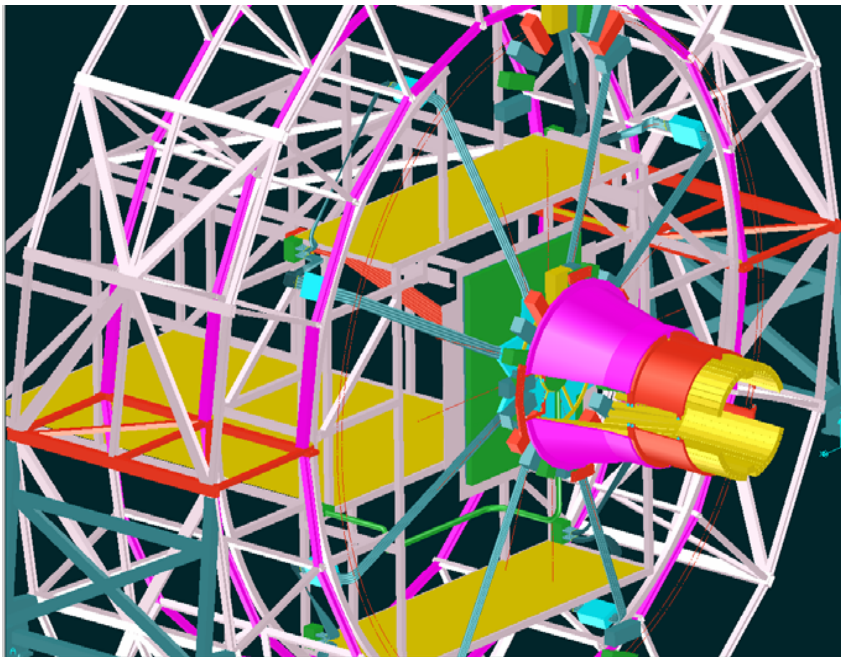
- Series production started
- Expect 25% of modules ready by end 04
- Production of all electronics under way



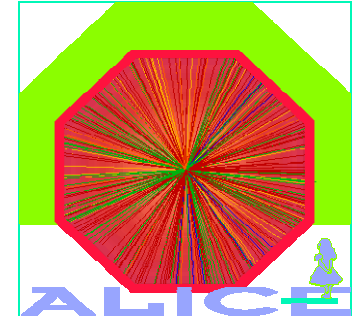
ITS



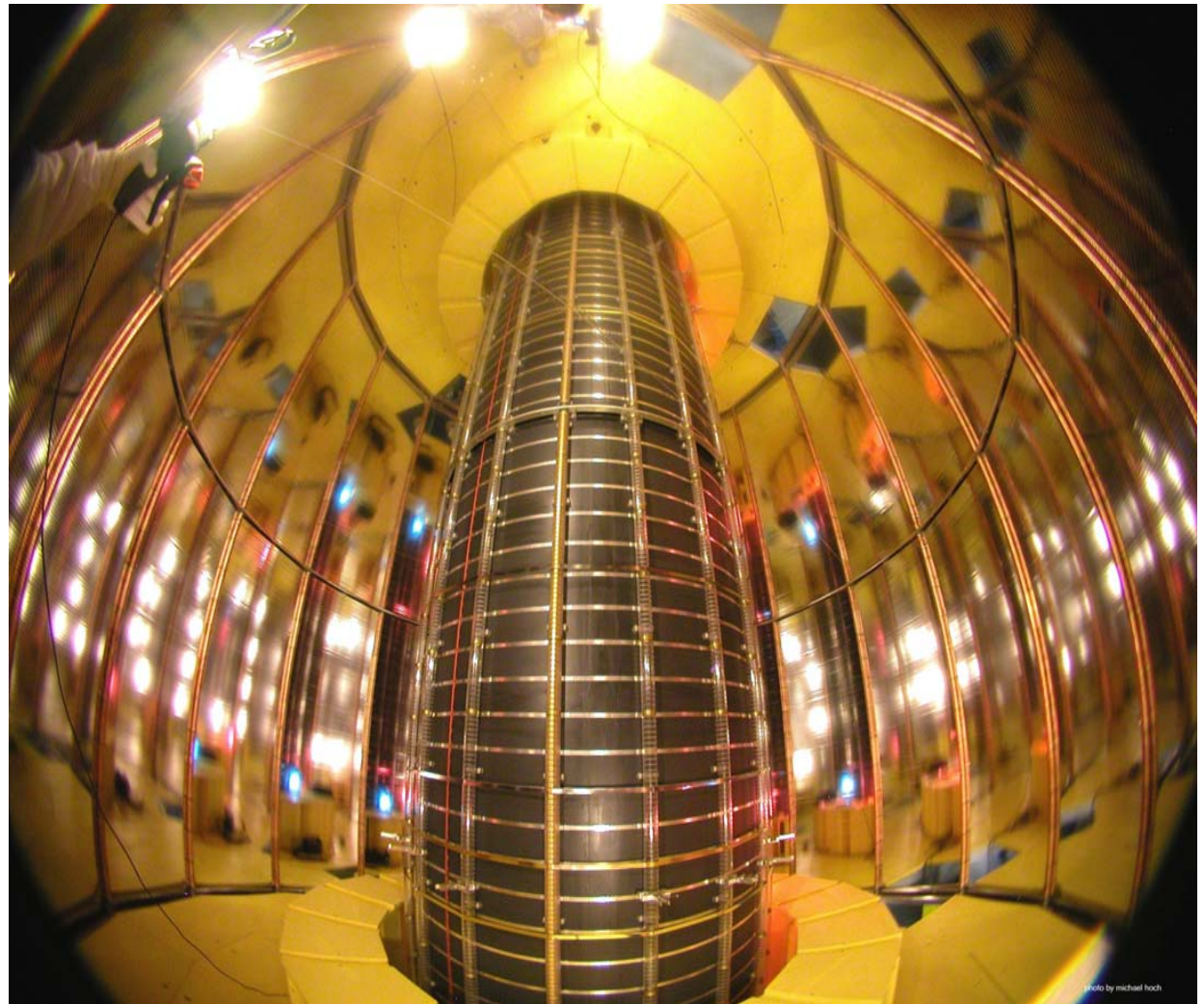
- Combined beam test of all three systems this months with full readout chain and control system (DCS and ECS)
- Integration almost complete
- Installation test with TPC



TPC



- Field cage finished
- Insertion test in space frame in November 04
- Mounting of readout chambers will start in January 05
- Commissioning on the surface in 2005



TPC electronics



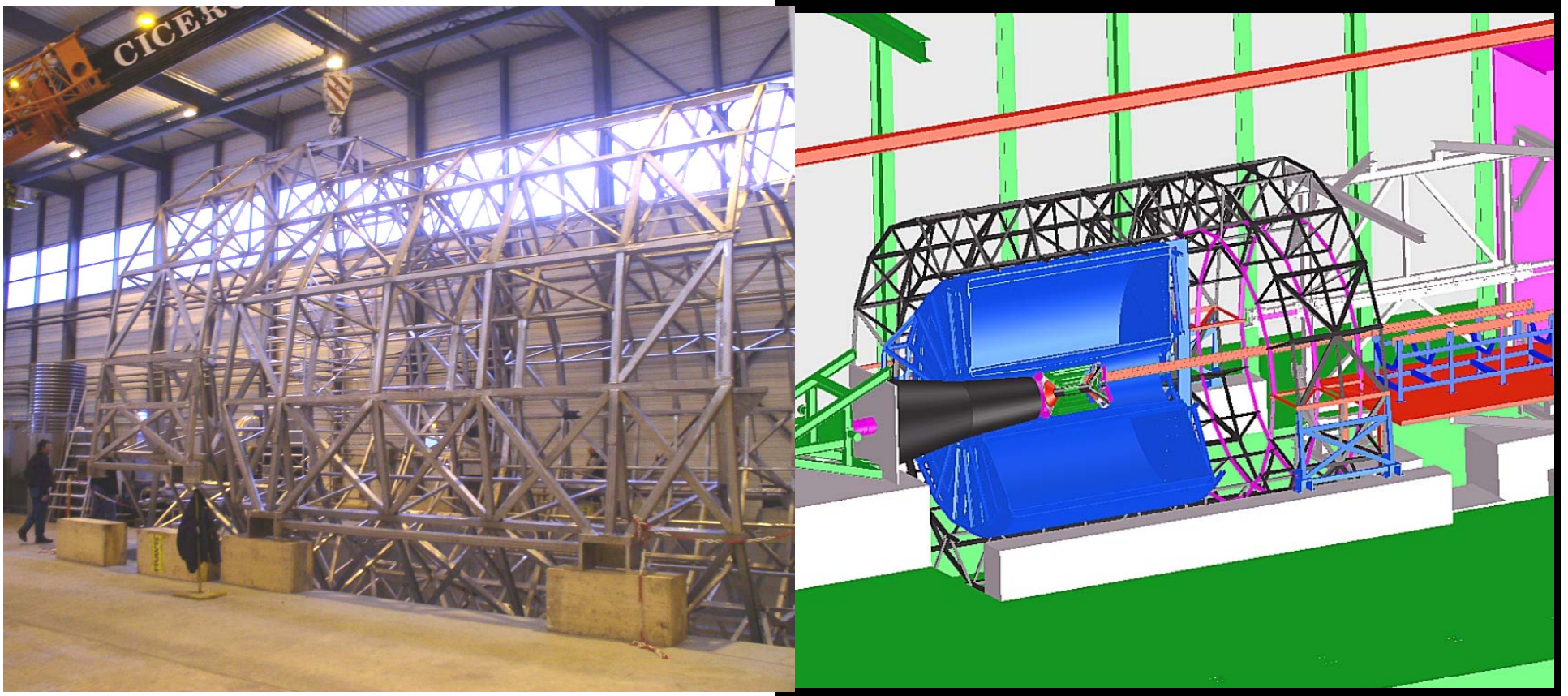
- FEC production and tests expected complete by end 04
- RCU production till May 05 in line with commissioning



TPC, ITS integration



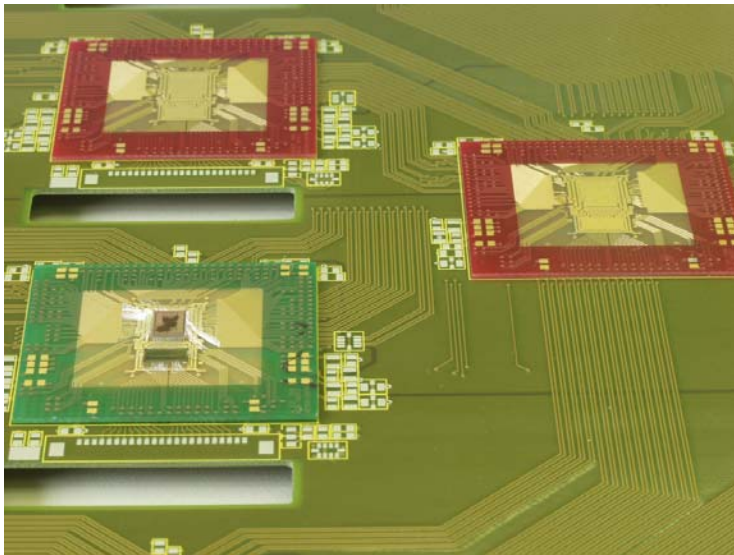
Test of the installation procedure of TPC, ITS and beam pipe on the surface



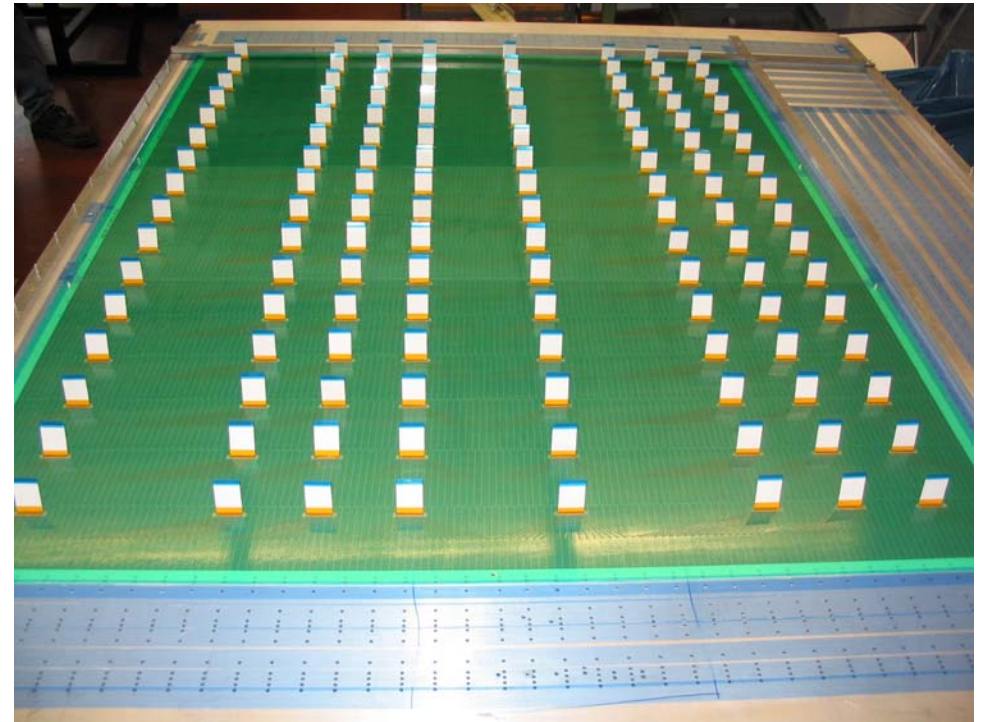
TRD



- Series production started in Heidelberg
- Other sites started, get ready
- Assembly of super modules will start in May 05, waiting for electronics
- Insertion test in space frame done



Split Oct '04



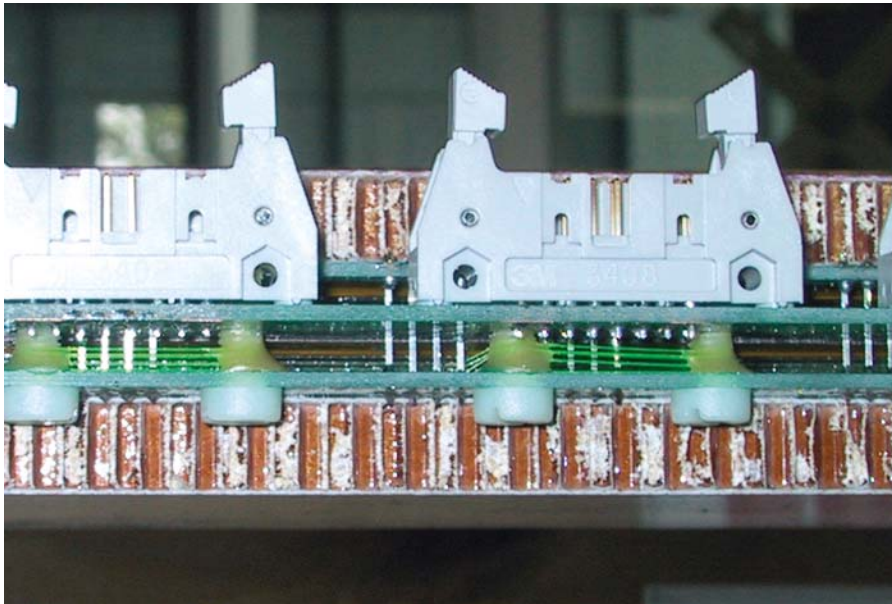
H.Taureg

13

TOF



- Strip production started
- Final module prototype under test
- Super-module insertion tested
- Mass production of the electronics started



Split Oct '04

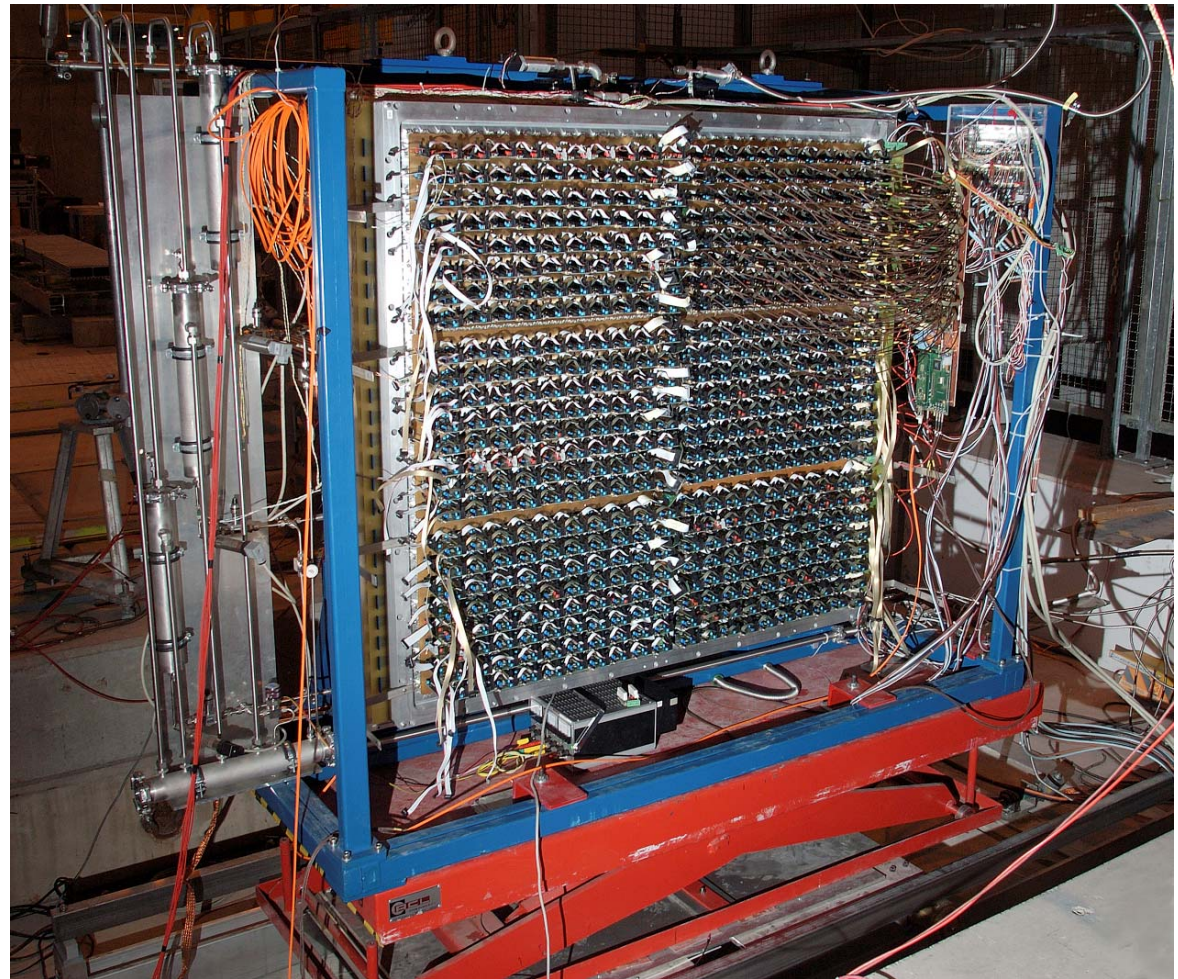
H.Taureg



HMPID



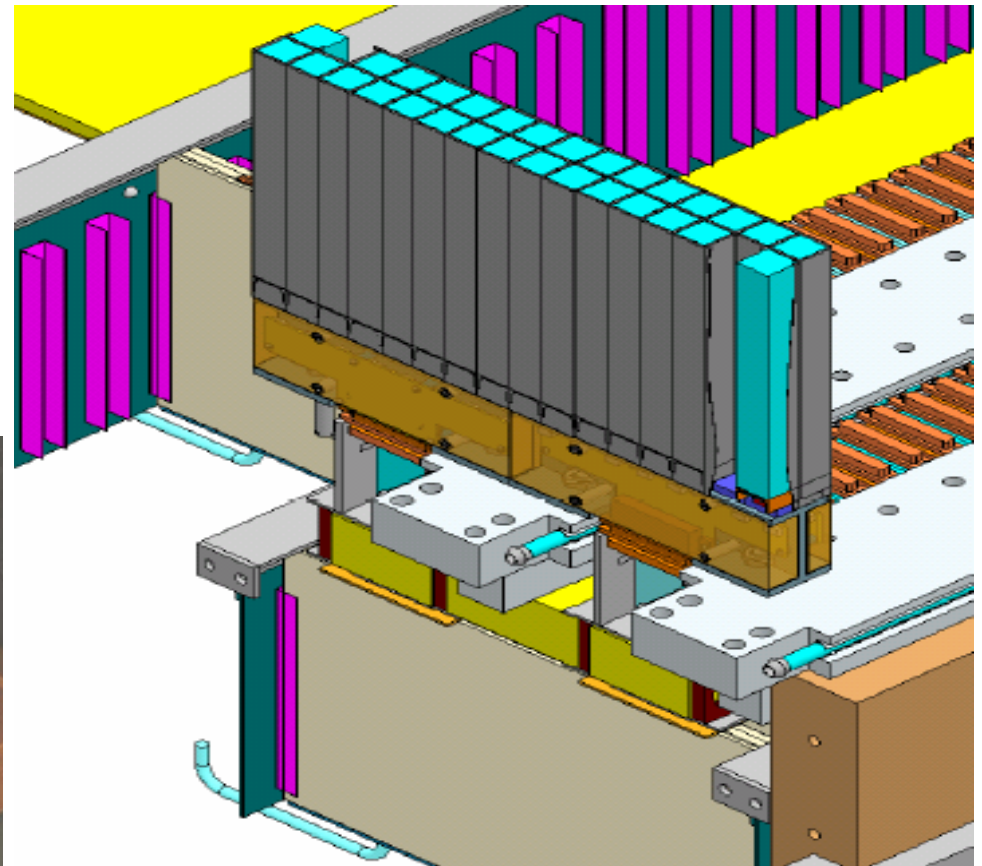
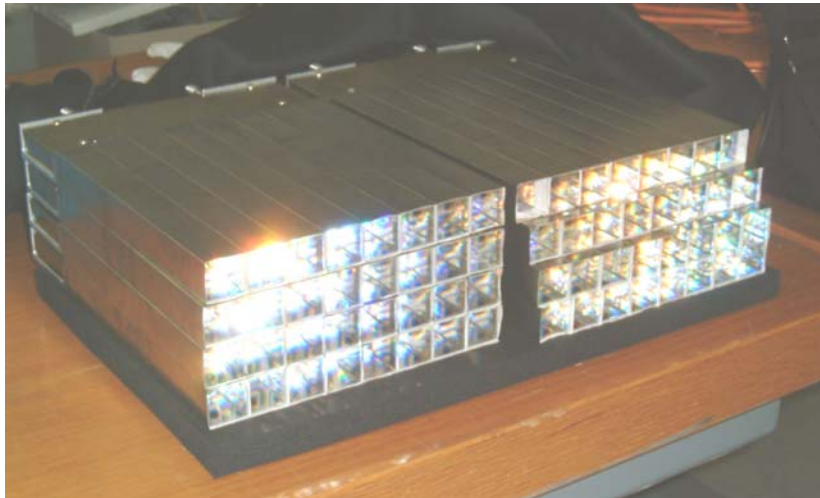
- Three modules tested with beam
- Fourth module complete
- All electronics available for the 7 modules



PHOS



- First module will be assembled in only in autumn 05
- Due to delays in FEE and mechanics design

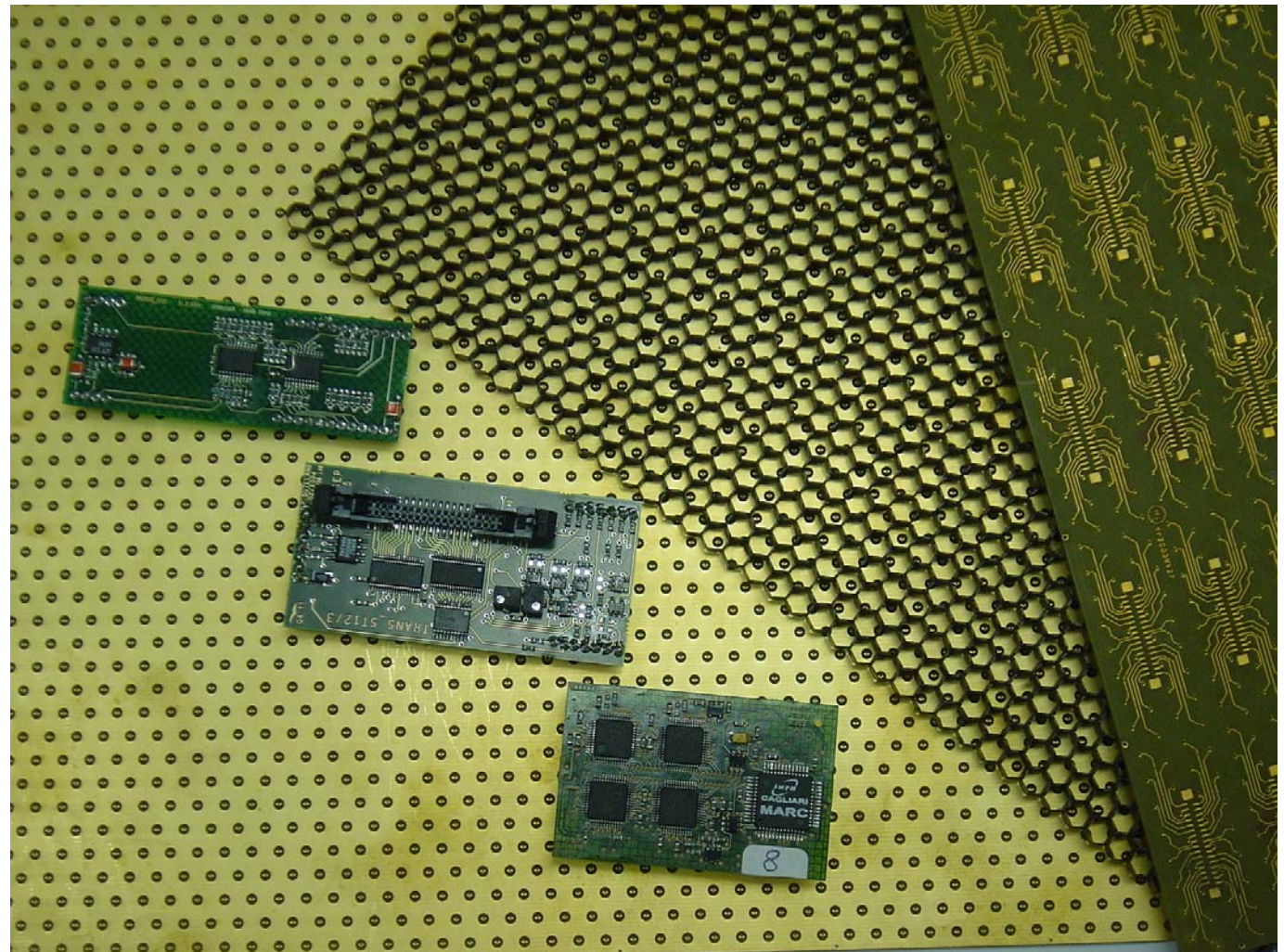


PMD



Two unit
modules to be
tested with
beam in
November

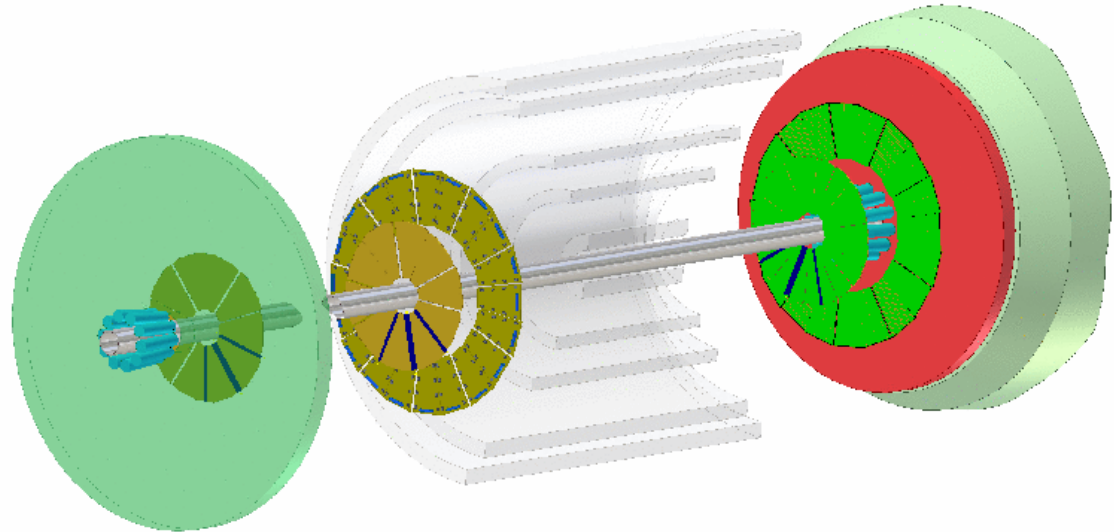
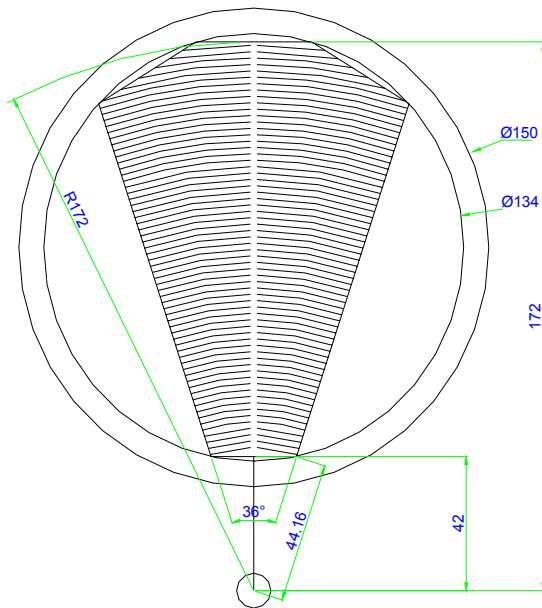
FEE cards in
production



FMD



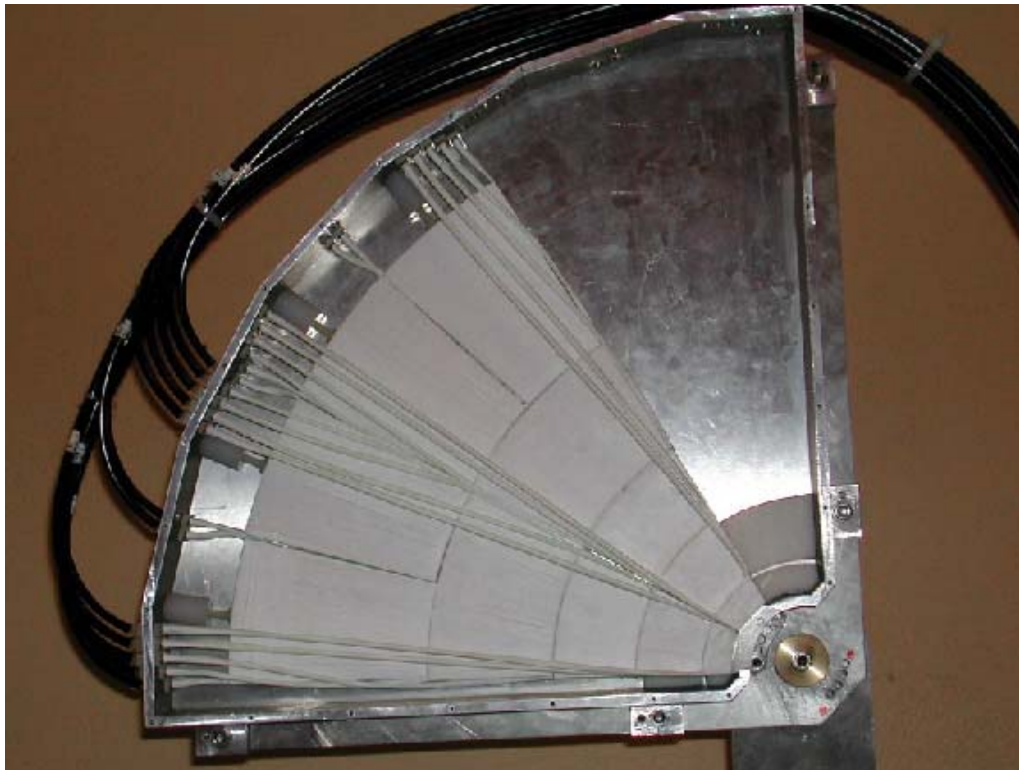
- TDR just submitted
- Ready for production



V0

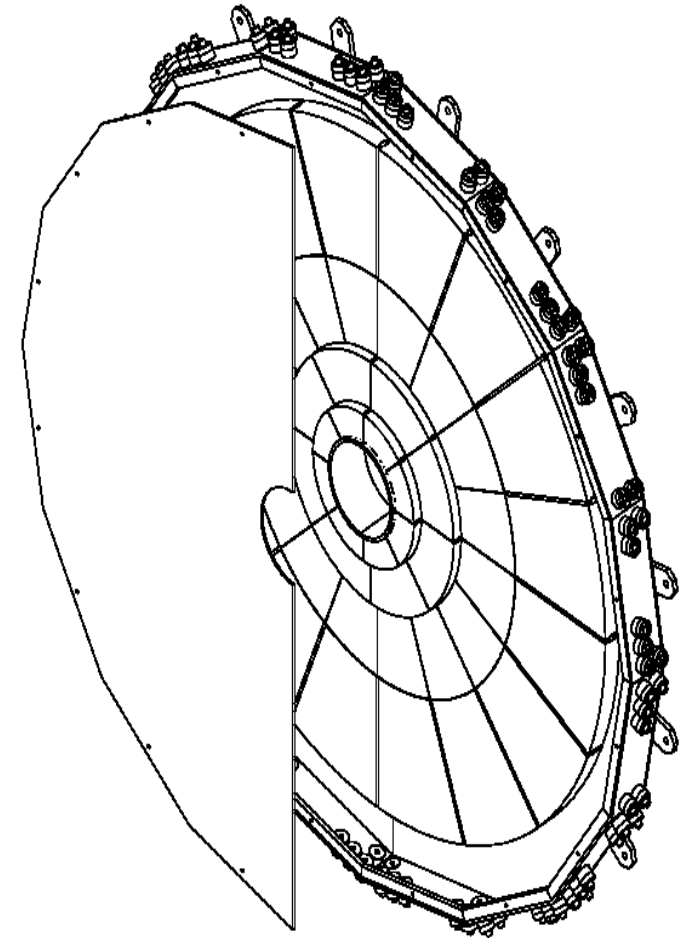


- Extensive beam tests on fibers and geometry
- TDR just submitted



Split Oct '04

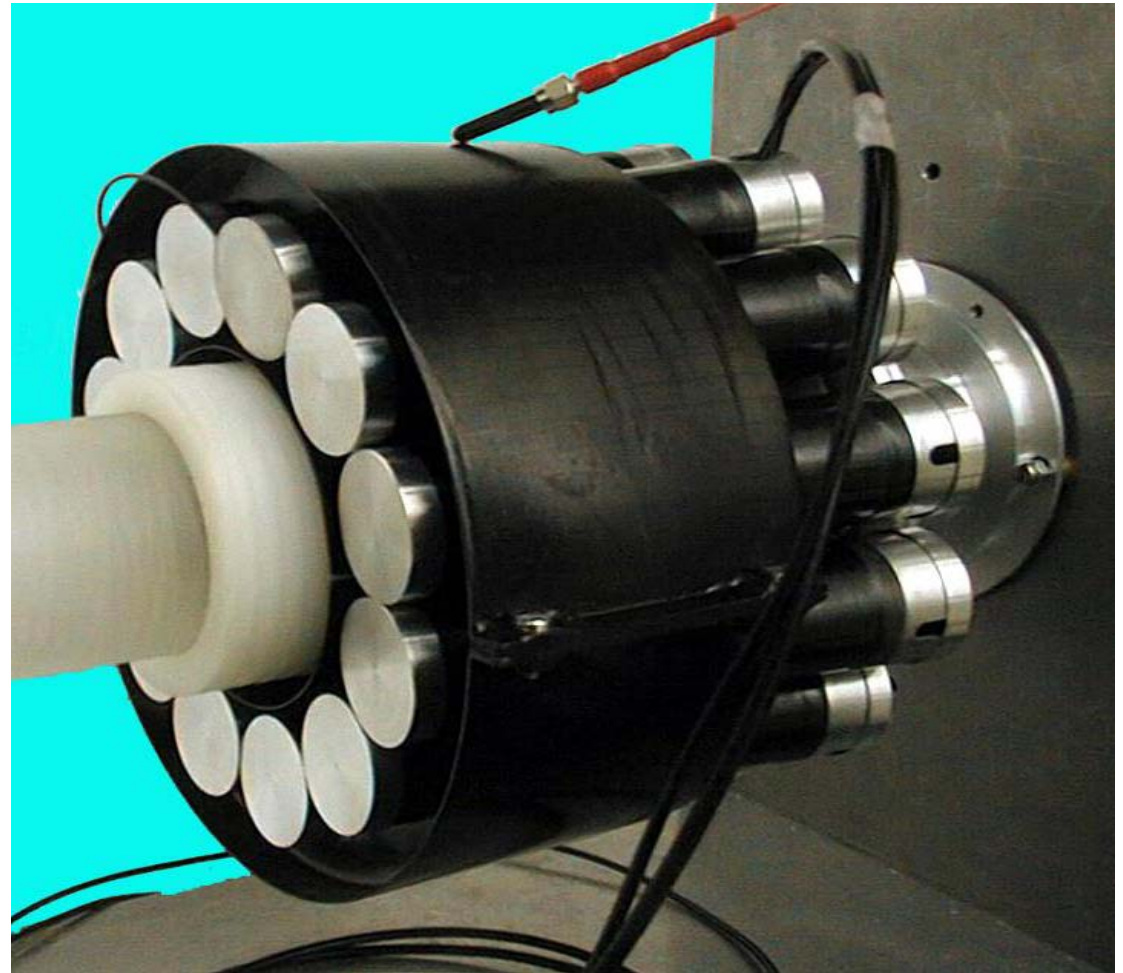
H.Taureg



T0



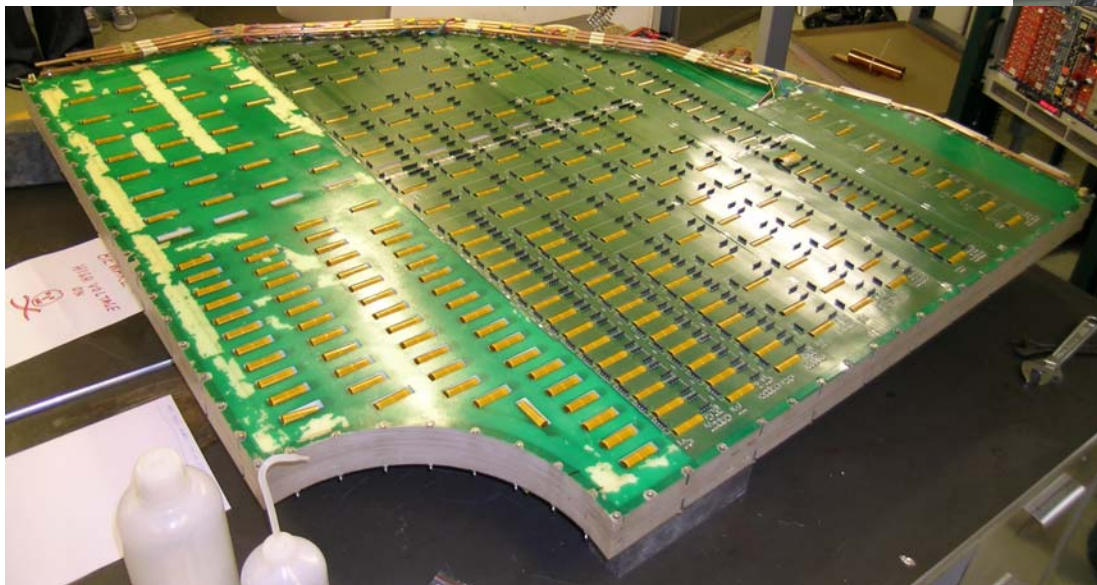
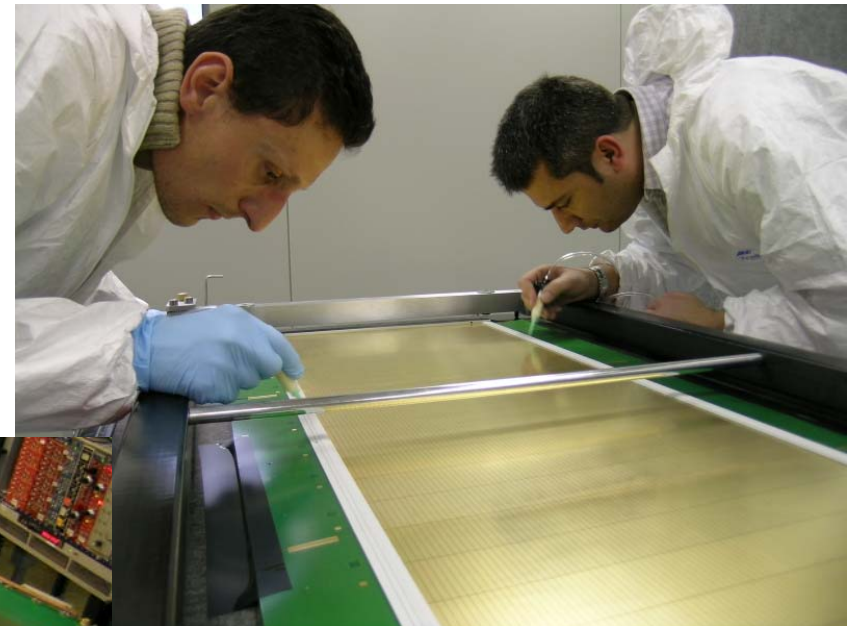
- Extensive tests on radiator geometry
- TDR just submitted



Muon chambers



- Series production under way in several labs



Split Oct '04

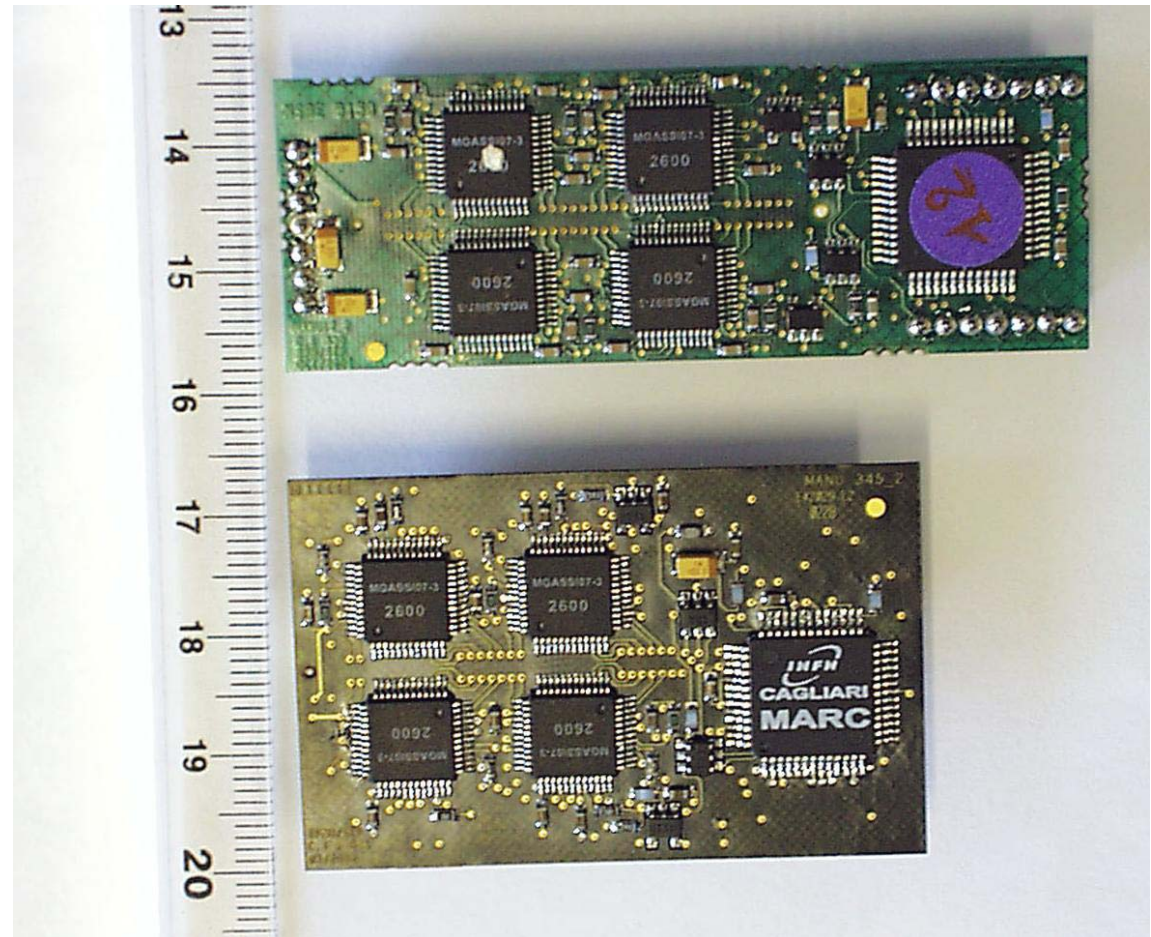
H.Taureg

22

Muon-tracking electronics



- FEE chips in production
- Tendering for FEE cards under way



Muon trigger



- RPCs extensively tested at GIF
- FEE production finished
- Trigger electronics in production

Absorbers



- Absorbers being assembled
- Filter wall being manufactured



Split Oct '04



H.Taureg

ZDC



- One calorimeter module tested in π and e beams
- Measured spectator protons



Schedule



- 2005
 - Finish Infrastructure
 - Support structures
 - Dipole to final position
 - Start of sub-detector installation
- 2006
 - Sub-detector installation
 - Commissioning

Summary



- Most sub-detectors in construction phase
- Their installation will start next year in the UX
- Want to be ready and complete for first beam



ALICE hopes for the best