

**ESnet Collaboration Workshop
October 27-29, 2004
Lawrence Berkeley Laboratory**

WHAT IS THE RCWG AND WHY SHOULD I CARE?

**Edward May
Argonne National Laboratory
October 27, 2004**

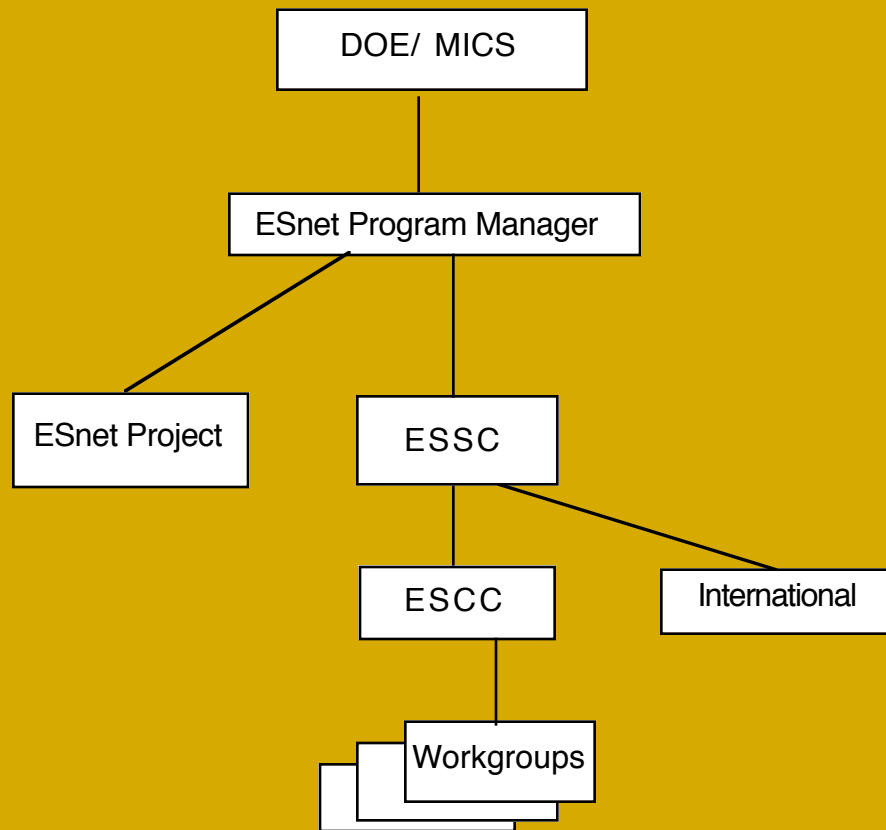


WHAT IS THE RCWG

- REMOTE CONFERENCING WORKING GROUP
- A SUB-TASK OF THE ESCC
- A SUB-COMMITTEE OF THE ESSC
- THE ESNET PROGRAM IS VERY
HIERARCHICAL



THE HIERARCHY



ESNET STEERING COMMITTEE (ESSC)

- THE ESNET STEERING COMMITTEE GUIDES THE POLICY OF THE ENERGY SCIENCES NETWORK.
- THE ESSC IDENTIFIES PROGRAM REQUIREMENTS FROM THE USERS' PERSPECTIVE, PRIORITIZES REQUIREMENTS, REVIEWS IMPLEMENTATION PLANS AND THE ALLOCATION OF RESOURCES.
- THE ESSC IS COMPRISED OF REPRESENTATIVES OF THE ENERGY RESEARCH PROGRAMS AS WELL AS MEMBERS WITH OTHER AFFILIATIONS.
- THE ESSC WEB PAGE <http://www1.es.net/essc/index.html>
- Larry Price, Chair
- Argonne National Laboratory



ESSC CONTINUED

• COMMITTEE MEMBERS BY PROGRAM AFFILIATION

- BASIC ENERGY SCIENCES (2)
 - FUSION ENERGY (2)
 - BIOLOGICAL AND ENVIRONMENTAL RESEARCH (2)
 - HIGH ENERGY PHYSICS (2)
 - INTERNATIONAL NUCLEAR SAFETY (1)
 - MATHEMATICAL, INFORMATION, AND COMPUTATIONAL SCIENCES (2)
 - NATIONAL NUCLEAR SECURITY ADMINISTRATION (1)
 - NUCLEAR PHYSICS (1)
 - DOE, HUMAN RESOURCES (1)
 - ESSC (1)
 - ESNET (ESNET PROJECT MANAGER)
- MEETS 2 OR 3 TIMES PER YEAR.



ESNET COORDINATING COMMITTEE (ESCC)

- THE ESNET SITE COORDINATING COMMITTEE (ESCC) IS A STANDING COMMITTEE WHOSE MEMBERS ARE APPOINTED BY THE INDIVIDUAL ESNET SITE ORGANIZATIONS. THE ESCC SERVES AS:
 - AN ADVISORY BODY TO THE ESNET STEERING COMMITTEE, PROVIDING A FORUM FOR THE CONSIDERATION OF A BROAD RANGE OF TECHNICAL ISSUES
 - A FORUM FOR INFORMATION INTERCHANGE ABOUT ESNET-WIDE ACTIVITIES AND PLANS AND SITE-SPECIFIC REQUIREMENTS AND PLANS
 - A FORUM FOR INTERACTIONS WITH THE ESNET MANAGER AND STAFF
 - A FORUM FOR INTERACTIONS WITH ER PROGRAMS THAT USE OR WOULD LIKE TO USE ESNET FACILITIES.

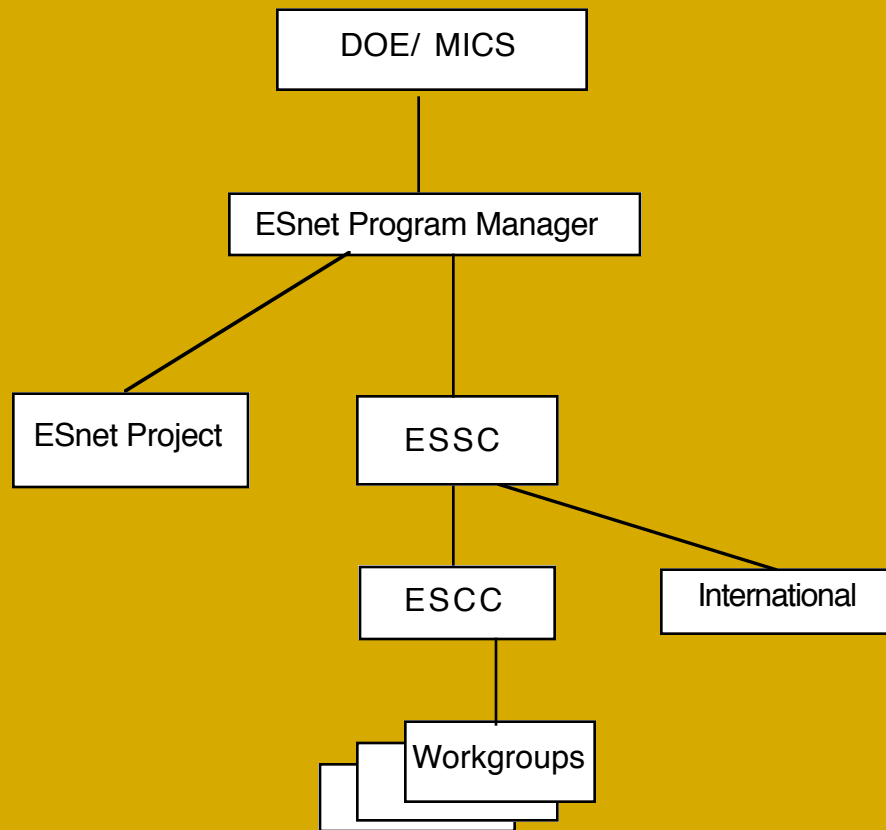


ESCC CONTINUED

- **CHAIRPERSON: WILLIAM R. WING
OAK RIDGE NATIONAL LABORATORY**
- **THE ESCC WEB PAGE**
[HTTP://WWW1.ES.NET/ESCC/INDEX.HTML](http://www1.es.net/escs/index.html)
- **SUB-TASKS AND WORKING GROUPS:**
- **APPLICATIONS WORKING GROUP (APPW)**
- **ARCHITECTURE TASK FORCE (ARCH)**
- **AUTHENTICATION TASK FORCE (AUTH)**
- **DISTRIBUTED COMPUTING ENVIRONMENT WORKING GROUP (DCEW)**
- **DISTRIBUTED SYSTEMS MANAGEMENT WORKING GROUP (DSMW)**
- **E-MAIL TASK FORCE (EMTF)**
- **IPNG WORKING GROUP (IPNG)**
- **NETWORK MONITORING TASK FORCE (NMTF)**
- **PKI WORKING GROUP (PKIWG)**
- **REMOTE CONFERENCING WORKING GROUP (RCWG)**
- **VPN TASK FORCE (VPNTF)**
- **WIRELESS TASK FORCE (WTF)**



THE HIERARCHY



REMOTE CONFERENCING WORKING GROUP (RCWG)

- THE ORIGINAL CHARTER
- THE REMOTE CONFERENCING WORKING GROUP ADVANCES COLLABORATIVE VIDEO CONFERENCING FOR BOTH CONFERENCE ROOMS AND THE DESKTOP. BOTH ISDN AND INTERNET MBONE STYLE TECHNOLOGIES ARE USED.
- FURTHER, THEY ARE BEING EVOLVED TO BE INTEROPERABLE.
- THE RCWG WORKS WITH THE ESNET VIDEO CONFERENCING SERVICE AT NERSC TO COORDINATE VIDEO ACTIVITIES IN THE ESNET COMMUNITY.



RCWG CONTINUED

- **THE RCWG WEB PAGE**

<http://www1.es.net/escc/index.html>

- **CURRENT MEMBERSHIP**

- EDWARD MAY ANL (CHAIRPERSON)
- ART BRAY SLAC
- BROOKS COLLINS SLAC
- BRUCE A WEATHERELL BNL
- CHRIS F MASULLO BNL
- CHRISTIAN ISNARD CERN
- CLINT WADSWORTH ESNET
- ED RITENOUR LBNL
- HANS FRESE DESY
- IVARS AMBATS ANL
- JOSH STILLERMAN MIT
- LORI ABRY ANL
- MARTIN JARA LBNL
- MIKE PIHLMAN ESNET
- PHILIPPE GALVEZ CAL TECH
- SHEILA CISKO FERMILAB
- STAN KLUZ ESNET
- CHRISTIAN HELFT IN2P3, FRANCE



SOME HISTORY

- BEGINNING IN EARLY '90S
- 1ST CHAIRPERSON KIPP KIPPINGHAM (FERMILAB)
- EARLY FOCUS ON MEETING ROOM ISDN BASED SYSTEMS.
- SCHEDULER WARS
- POPULARIZATION, EDUCATION, ORGANIZATION, BEST PRACTICES.



WHAT DOES THE RCWG ACTUAL DO!

- MEETS BI-WEEKLY USING VEDEO-CONFERENCING TECHNOLOGY.
- TRIES TO REALLY UNDERSTANDING WHAT THE ESNET MODEL OF COLLABORATION SERVICES IS AND HOW IT CAN BE USED BY DOE COMMUNITY.
- PROVIDE THE TECHNICAL REQUIREMENTS.
- PROVIDES A REASONABLY DIRECT FEEDBACK BETWEEN ESNET AS PROVIDER AND DOE SCIENCE COMMUNITY AS CONSUMER OF COLLABORATION SERVICES.
- PROVIDES A CONSISTENT GROUP WHO CAN TEST NEW SERVICES, PLAN FOR DEPLOYMENT OF NEW SERVICES, MAINTENANCE AND UPGRADES IN HIGHLY DISTRIBUTED ENVIRONMENT.



RECENT ACTIVITIES

- PLANNING OF THE RUN-DOWN OF THE ISDN BASED SERVICE.
- PLANNING OF THE RUN-UP OF THE IP BASED SERVICE.
- TESTING ... DEALING WITH COMMERCIAL SOFTWARE AND HARDWARE.
- INFORMATION
- INTERACTIONS WITH EUROPEAN SCIENCE COLLABORATION PROVIDERS: CERN, DESY, IN2P3/FR
- INTERACTIONS WITH OTHER US BASED (VRVS, ACCESSGRID).
- IMPACT OF LIMITED RESOURCES FOR HARDWARE AND PEOPLE AT ESNET.



FUTURE

- THE RCWG IS A "GOOD THING"!
- I BELIEVE IT IS USEFUL TO BOTH THE ESNET SERVICE PROVIDER AND THE "CUSTOMER".
- TRY TO REACH A BROADER GROUP OF INTERESTED PARTICIPANTS.
- NEED UNIVERSITY BASED PARTICIPATION.
- DO A BROAD SURVEY OF USERS.
- DETERMINE IF A USERS GROUP IS A DESIRABLE ACTIVITY.
- FOLLOW-UP ON THE RESULTS OF THIS WORKSHOP.



FROM THE SURVEY

- DISCUSS WORLD-WIDE HENP COLLABORATION SERVICE DEPLOYMENT
- DISCUSS POSSIBLE COFUNDING OF ESNET SERVICES
- BUILD FEDERAL GOV-WIDE COLLABORATION USER GROUP
- STUDY THE FEASIBILITY OF A GLOBAL HEP LAB “WITHOUT WALLS”
- BUILD DOE/NNSA-WIDE COLLABORATION USER GROUP
- SETUP A PORTAL FOR REMOTE MEETING MANAGEMENT IN HENP



PERSONAL OBSERVATIONS

- VIDEO BASED COLLABORATION SERVICES ARE HARD TO DO!
- THE UNDERLYING TECHNOLOGY IS RAPIDLY CHANGING.
- FIREWALLS A LOCAL SITES.
- END USERS HAVE VARIETY OF PLATFORMS AND CLIENT SOFTWARE AND LEVELS OF EXPERIENCE!
- A SINGLE USER WITH MAL-FUNCTIONING EQUIPMENT CAN DESTROY A MEETING.
- NEED AUTOMATIC GAIN-CONTROL ON AUDIO!
- AN ECHO SERVICE FOR USER TESTING IS EXTREMELY USEFUL.



MORE OBSERVATIONS

- INTEGRATION OF SERVICE PROVIDERS (ESNET, VRVS, ACCESSGRID, EURO,...)
- INSTANT MESSAGING
- USER EXPERIENCE (CASUAL V. FREQUENT FLYER)
- USER SUPPORT (CENTRAL V. DISTRIBUTED)
- WHAT IS THE MODEL (MIX & MATCH V. FULLY INTEGRATED SUITE)
- WHAT IS THE MODEL (VOICE & VIDEO & DATA [ACTIVE V. PASSIVE])
- ARCHIVAL SUPPORT (SHORT V. LONG TERM)... WHAT ABOUT PRIVACY?
- RCWG IS A GROUP OF “MIDDLEPEOPLE” I.E. BETWEEN SURVICE PROVIDOR AND END USERS



STILL MORE OBS...

- COMING LHC ERA WILL BRING “CONTINUOUS PRESENCE”
- EXTENSION TO FULL WORKFLOW MANAGEMENT (E.G. ELECTRONIC LOGBOOK) ... PLUGABLE MODULES
- MEETING ROOM SYSTEMS ARE HATED BECAUSE OF AUDIO. (BUT WHAT ABOUT THE BEHAVIOR OR REAL PEOPLE!)
- CLIENT END SYSTEM REALLY MUST BE ECHO CANCELING.
- AND MANY MORE ... SMALL AND LARGE ISSUES.

