



GDB

Introduction

*Kors Bos, NIKHEF, Amsterdam
GDB Meeting at CERN, June 22, 2005*



Recent meetings

GDB

Minutes of the meeting:

<http://agenda.cern.ch/askArchive.php?base=agenda&categ=a045322&id=a045322/minutes>

- Can they be approved?
- Ongoing actions
- thanks to Jeremy Coles !

Recent workshops:

- **Operations workshop in Bologna May 24-26**
 - <http://grid-it.cnaf.infn.it/workshop/>
- **Service Challenge III detailed planning workshop June 13-15**
 - <http://agenda.cern.ch/fullAgenda.php?ida=a051784>

Next meetings:

- **July GDB July 19 – 20**
 - July 19: Tier0 – Tier1 Networking
 - <http://agenda.cern.ch/fullAgenda.php?ida=a053462>
 - July 20: Service Challenge III dedicated
 - <http://agenda.cern.ch/fullAgenda.php?ida=a045324>

Page with all meetings

- <http://agenda.cern.ch/displayLevel.php?fid=31181>



T0/T1 network meeting July 19 @CERN

GDB

- **Network architecture document v.2 is finished**
- **Optical Private Network OPN:**
 - Dedicated 10 GE lambda's between T0 and all T1s
 - Including Europe, US and AP
 - Provided by NREN's, Geant, ESnet, ASnet
- **Technical details described in Arch. Doc.**
 - IP addressing, BGP Routing, Security, Backup, etc.
 - Network Operations Center
- **Expected at the meeting: NREN and T1 reps.**
- **Homework needed from each T1 before 19/7:**
 - 3 slides from each T1
 - I will ask again by email



T1 Center Information

GDB

- **In interpreting the T0/T1 document how do the T1s foresee to connect to the lambda?**
 - Which networking equipment will be used?
 - How is local network layout organised?
 - How is the routing organised between the OPN and the general purpose internet?
 - What AS number and IP Prefixes will they use and are the IP prefixes dedicated to the connectivity to the T0?
- **What backup connectivity is foreseen?**
- **What is the monitoring technology used locally?**
- **How is the operational support organised?**
- **What is the security model to be used with OPN?**
 - How will it be implemented?
- **What is the policy for external monitoring of local network devices, e.g. the border router for the OPN.**



Service Challenge III

July 20 GDB

GDB

- **SC III should have started: throughput tests ongoing**
- **Homework for T1's: Prepare 2 slides each**
 - Short Status Report
 - Network used, Services running, Operational issues
 - Very concrete and detailed plans for next days/weeks
- **Homework for the Expts: 2 slides each**
 - Desired very simple first use cases to be tried
 - Not testing everything at once
 - Only with some T1s to begin with
 - Not mission critical
- **We use the whole GDB to discuss just this!**
- **Could all T1's send a representation (vacation time)?**



TDRs have come out

GDB

ALICE:

http://pcaliweb02.cern.ch/static/Documents/TDR/Computing/All/alice_computing.pdf

ATLAS:

<http://doc.cern.ch//archive/electronic/cern/preprints/lhcc/public/lhcc-2005-022.pdf>

CMS:

<http://doc.cern.ch//archive/electronic/cern/preprints/lhcc/public/lhcc-2005-023.pdf>

LHCb:

<http://>

LCG:

<http://lcg.web.cern.ch/LCG/tdr/>

Party on Friday in Bld. 40



Dates of future GDB meetings



- **July 19-20**
 - **Special attention for: Service Challenges and T0/T1 network**
- **September 6-7**
 - **Special attention: Service Challenges**
 - **UK has a problem because of a GridPP meeting**
- **October 11-12**
 - **Special attention: Service Challenges and Accounting**
 - **Overlaps with HEPiX**
- **November 8-9**
 - **Invited in Vancouver (SuperComp. 11-18)**
 - **We have to decide now**
- **December 20-21**
 - **End of Service Challenge III**
 - **Cern already closed ?**
- **Please give me feedback !!**



This meeting

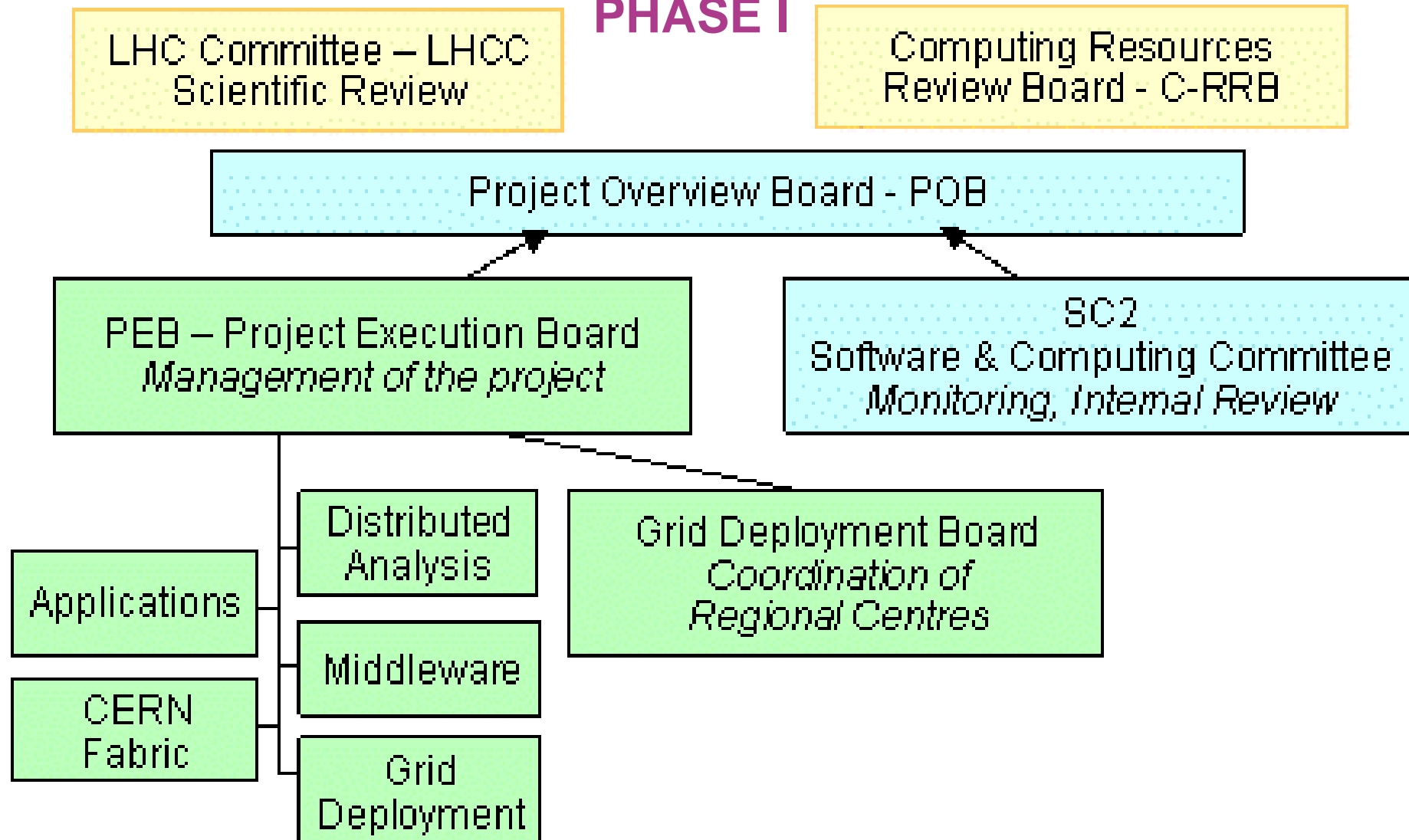
GDB

- Service Challenges
- Security
- Quattor
- Baseline Services
- The Nordic: Tier-1 and Interoperability
- Waiting in queue:
 - gLite components
 - Networking (draft architecture ready)
 - Tier-2 sites
 - Storage Task Force
 - Accounting



LCG Project Organisation

PHASE I





LCG Project Organisation

PHASE I

LHC Committee – LHCC
Scientific Review

Computing Resources
Review Board - C-RRB

Project Overview Board - POB

PEB – Project Execution Board
Management of the project

~~SC2
Software & Computing Committee
Monitoring, Internal Review~~

Applications

Distribution
Analysis

Grid Deployment Board
*Coordination of
Regional Centres*

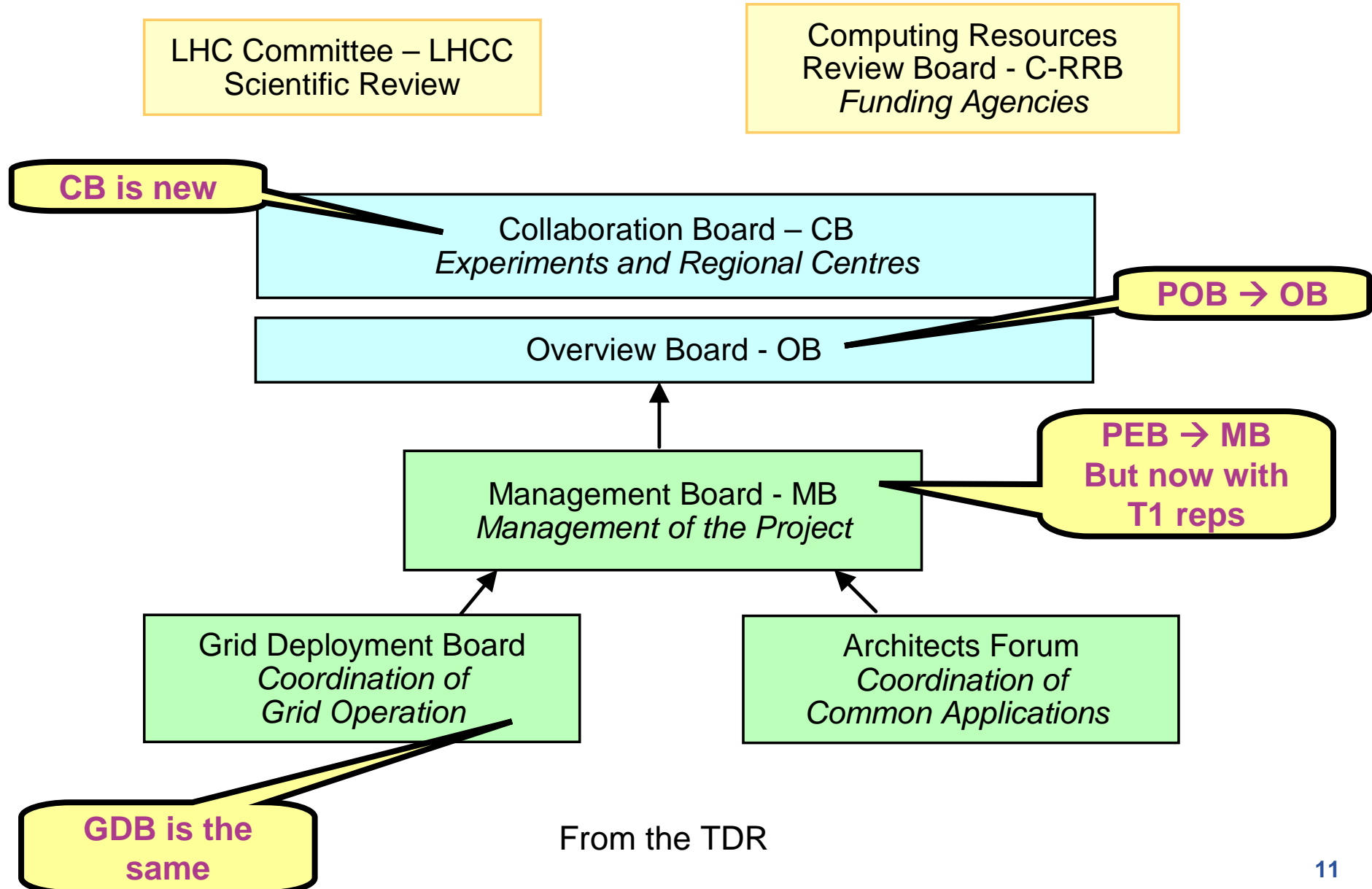
Decision making
No Tier-1 Centres reps
GBD chair ex officio

National reps.
Tier-1 Centres
Tier-2 Centres



Management for Phase II

GDB



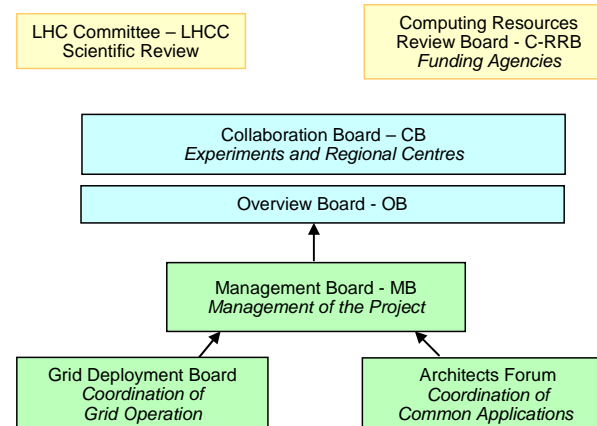


Management for Phase II

GDB

Reasons for change:

- new phase of the project: R&D → Service
- World Wide Collaboration WLCG
- SC2 no longer needed
- T1s need to be involved more directly



GDB members	MB members
Experiment reps (comp.coord.)	Experiment reps (comp.coord.)
T1 reps	T1 reps
T2 reps of countries without T1	--
Area project managers	Area project managers
GDB chair (chair)	GDB chair
LCG project leader	LCG project leader (chair)



MB (in the MoU)

GDB

The **WLCG Management Board (MB)** **supervises the work of the WLCG Collaboration**. It is chaired by the LCG Project Leader and reports to the OB. The MB **organises the work of the WLCG Collaboration as a set of formal activities and projects. It maintains the overall programme of work and all other planning data necessary to ensure the smooth execution of the work** of the WLCG Collaboration. It provides quarterly progress and status reports to the OB. The MB endeavours to work by consensus but, if this is not achieved, the LCG Project Leader shall make decisions taking account of the advice of the Board. The MB membership includes the LCG Project Leader, the Technical Heads of the Tier-1 Centres, the leaders of the major activities and projects managed by the Board, the Computing Coordinator of each LHC Experiment, the Chair of the Grid Deployment Board (GDB), a Scientific Secretary and other members as decided from time to time by the Board.



GDB (in the MoU)

GDB

The **Grid Deployment Board** (GDB) is the forum within the WLCG Collaboration where the computing managements of the experiments and the regional computing centres **discuss and take, or prepare, the decisions necessary for planning, deploying and operating the WLCG**. Its membership includes: as voting members - one person from each country with a regional computing centre providing resources to an LHC experiment (usually a senior manager from the largest such centre in the country), a representative of each of the experiments; as non-voting members - the Computing Coordinators of the experiments, the LCG Project Leader, and leaders of formal activities and projects of the WLCG Collaboration. The Chair of the GDB is elected by the voting members of the board from amongst their number for a two year term. The GDB may co-opt additional non-voting members as it deems necessary.



My worries

GDB

- Too much overlap in membership
- Both can vote: GDB per country, MB per member
- MB is too big to be an executive board (20-25 people)
- MB needs to meet often (1 / 1-2week)
- MB needs ½ - 1 day meetings
- Tel.Conf. not efficient for this sort of board



My Thoughts

GDB

- **Need to re-think this scheme (will change MoU)**
- **Needs to be discussed in the biggest group: Coll.Board**
- **Collaboration doesn't exist: CB meets 1/year**
- **OB needs to be more external (T1 + expt reps. again)**
- **Need to distinguish Collaboration from Program of Work (Project)**
- **Need small board to execute a Program of Work**
- **Need big board to decide the Program of Work**
- **T2 sites need to be involved**
- **Actions and Task Forces need a clear place**
- **Need a time when it should be decided**



Storage Task Force



The storage task force will:

- Examine the current experiment computing models.
- Attempt to determine the data volumes, access patterns and required data security for the various classes of data, as a function of Tier and of time.
- Consider the current storage technologies and their suitability for various classes of data storage.
- Attempt to map the required storage capacities to suitable technologies.
- Formulate a plan to implement the required storage in a timely fashion.

The task force will report to the HEPIX Board, and to the LCG project via the Grid Deployment Board

Members:

- Roger Jones, Lancaster, ATLAS, Tier-2 (chairman)
- Andrew Sansum, RAL, Tier-1
- Bernd Panzer/ Helge Meinhard, CERN, Tier-0
- TBC (CMS)
- Peter Malzacher GridKA Tier-1, Alice
- Andrei Maslennikov, CASPUR
- Jos van Wezel GridKA, T1, Knut Woller, DESY, Tier-2
- Vincenzo Vagnoni, Bologna, LHCb, Tier-2

Milestone: a first report by HEPIX meeting in September at SLAC



SuperComputing 2005

GDB

- **Seattle, November 12-18 2005**
- **Common demo (a.o.t.) on LCG Service Challenges**
- **GridIce/MonaLisa like demo, flyers, posters, Tshirt, Logo**
- **Equipment needed: stand, normal netw., laptop, screen**
- **CERN has no booth but supports the initiative anyway**
- **Participants:**
 - CERN, no booth, Francis Grey, Rosy Mondardini (coordination)
 - Germany, FZK booth, Bruno Hoefft
 - Netherlands, NCF booth, Kors Bos
 - Italy, INFN booth, Luca dell'angelo
 - UK, PPARC booth, Roger Jones
 - *France?, Nordic? Spain?*
 - US, FNAL booth, Vicky White
 - US. BNL booth, Vicky White (temporarily)
 - US, SLAC booth, Harvey Newman
 - Canada, Triumph booth, Rod Walker
- **First phone meeting be called soon**



GDB

END



Actions from the last meeting



Item No.	Description	Owner	Status
0412-1	Contact Dave Kant at RAL re input of NorduGrid accounting data	A NorduGrid repr.	open
0501-4	Provide feedback to KB on proposed meeting dates for Q3 and Q4 2005	All	open
0502-1	Experiments to provide information on their planning	Experiments	done
0502-2	Arrange Data Management Workshop at CERN 5 th -7 th April	KB/JC	Closed
0502-4	Follow up on INFN accounting records with Cristina Vistoli	KB	done
0502-5	Tier-1s not in SC2 or 3 to provide planning information	Tier-1 reps	ongoing
0502-7	Appoint coordinator to work on LCG participation in Super Computing 2005	WvR	ongoing
0502-8	Read Site registration Policy and procedures document and raise concerns before document endorsed at next GDB in March	All	done
0503-1	GDB representatives to put forward names to attend joint SC/Networking/GDB meetings.	All	done
0503-2	Send out request for Tier-2 representative information	KB	done
0503-3	Review and confirm the Tier-2 information at the following link : http://lcg.web.cern.ch/LCG/PEB/gdb/LCG-Tiers.htm	All	done
0503-4	Specific action to clarify Italian entries for 0503-3 in light of a potential misunderstanding	Laura Perini	done
0503-5	Ensure that all sites in country are publishing data	All	open
0503-6	Mail Ian Bird with a formal request for an EGEE representative for OSG and a Storage Group contact to help with SRM testing	Ruth Pordes	done
0503-7	Begin common work list for OSG-EGEE to enable further discussion on scope and priorities for joint working	Vicky White	ongoing
0503-8	Provide OSG with information about policy implementers in EGEE	Ian Bird	open