



Enabling Grids for E-scienceE

NA3 External Review

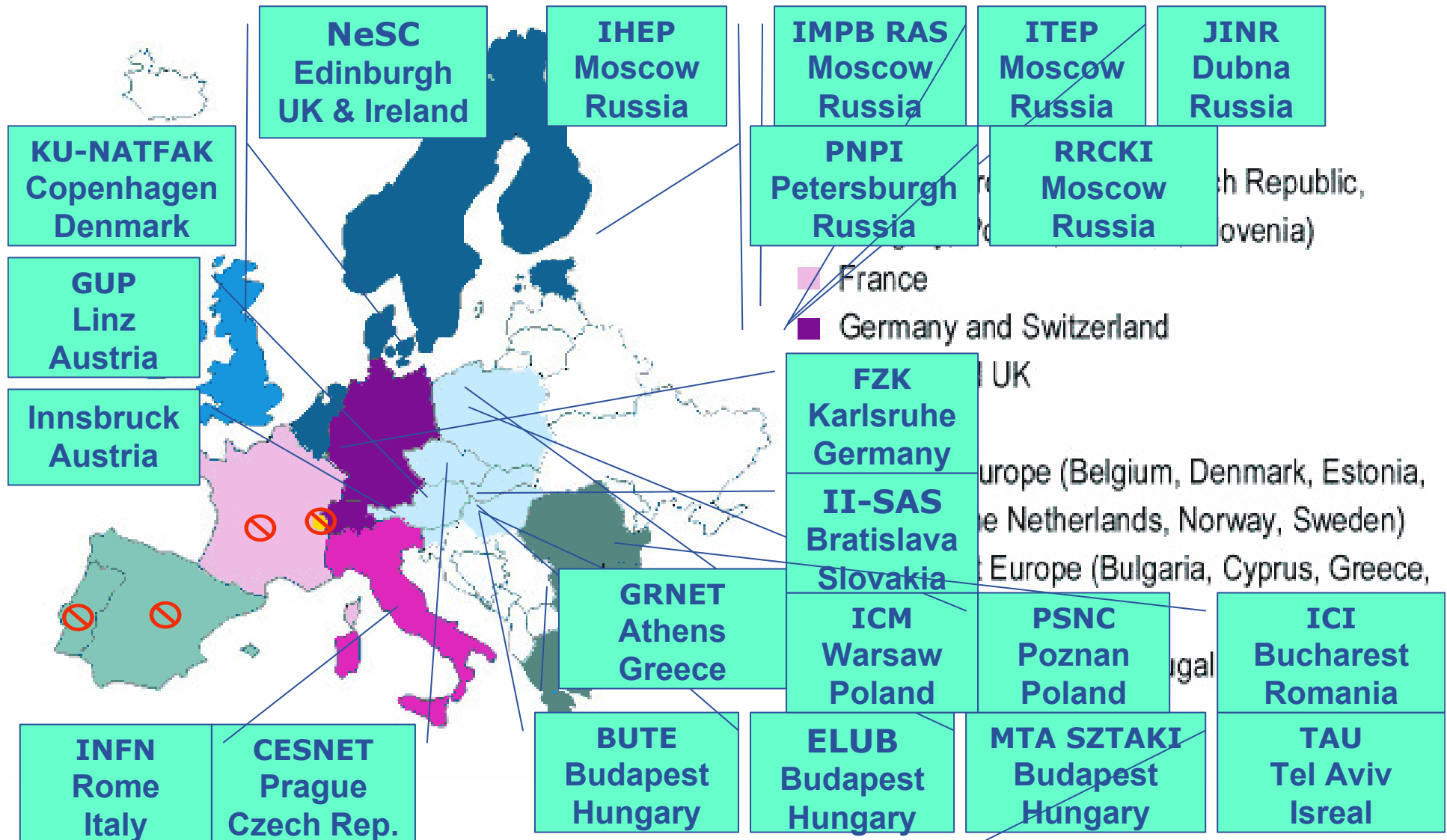
Training resources, procedures and plans

www.eu-egee.org



INFSO-RI-508833

EGEE 22 Training Partners



- **Light weight processes**
 - Value in QA is that it encourages people not to avoid the process
 - Encourage events – don't make it difficult
- **Foster local provision of courses**
 - Provide help where necessary
 - Provide services – registration, GILDA/GENIUS
- **Provide central support and 'safety net'**
- **Encourage local experimentation and development of expertise**

- **Assessment**
- **Certification**
- **Central control**
- **Homogenisation**

- **UEDIN providing speakers to events (in Italy, Germany, Spain, CERN)**
- **Greek support for events in Slovakia, etc**
- **Italian support for events in other areas.**
- **Experimentation with**
 - AccessGrid provision UK-> Germany
 - Slovakia VRVS

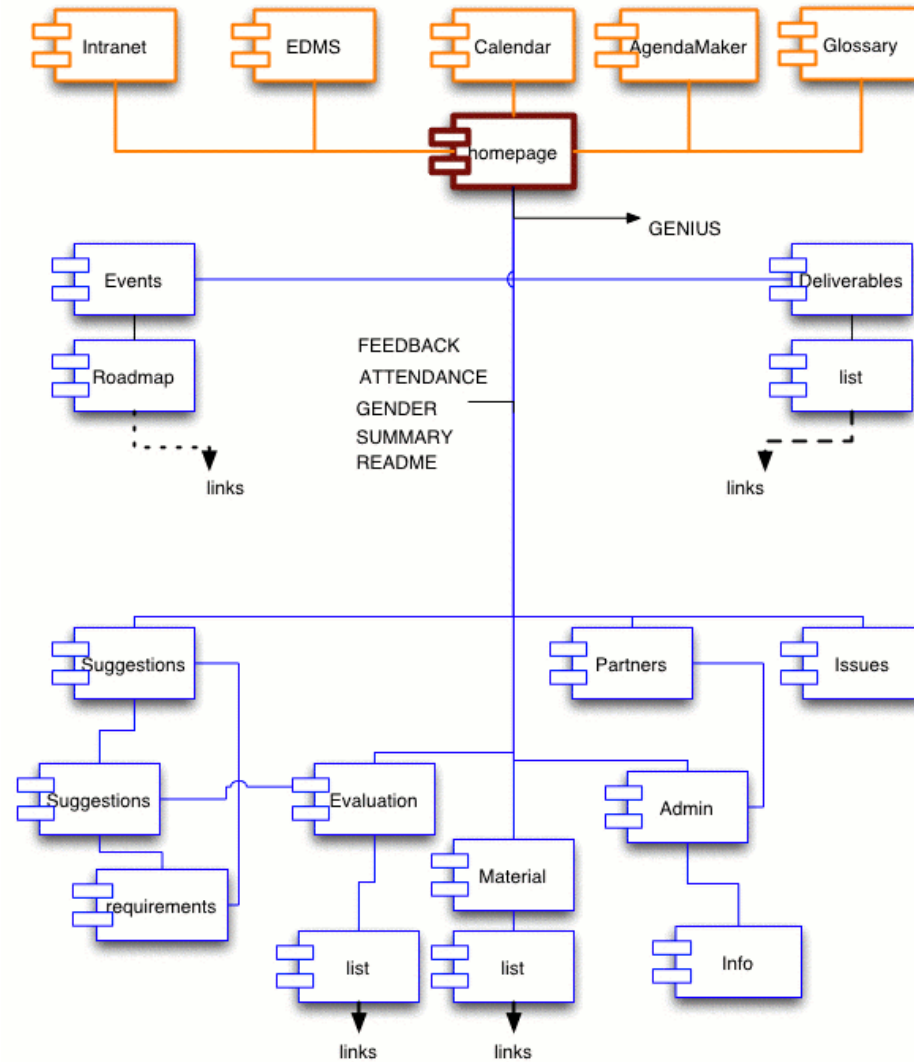
- **Baltics**
 - UEDIN provided training as part of the process of bringing the Baltic states into EGEE
- **Australia**
- **Venezuela**
 - Roberto Barbera's group from INFN provided training as part of the process of bringing the South American states into EGEE

- **3 months notice**
- **By 2 months local organisation, provisional agenda, advertising.**
- **1 month complete agenda (may still be changed)**
- **There can always be exceptions but not too many or too extreme.**

- **UEDIN is providing a registration services for other sites**
- **This has been used by a number of sites for events (France, Germany, etc)**
- **NB. Cannot provide support for collecting fees.**

- **Training is an whole EGEE activity**
- **From the beginning of the project it was recognized that expertise from the other activities would be required to support the training effort.**
- **Considerable support has been received from:**
 - SA1
 - JRA1
 - NA4

NA3 WEB SITE MAP



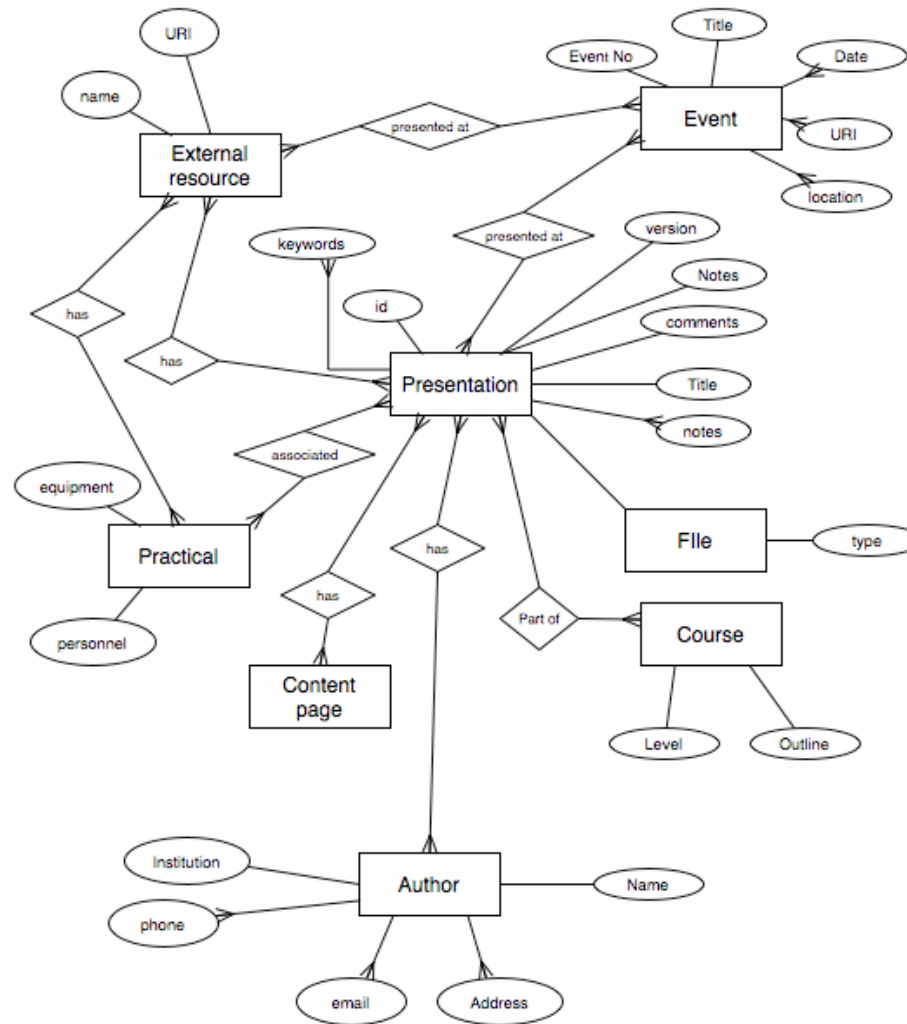
- <http://www.egee.nesc.ac.uk/trgmat/index.html>
- **Structure**
- **Implementation**
- **IPR**
- **Attribution**
- **EGEE copyright and open repository**

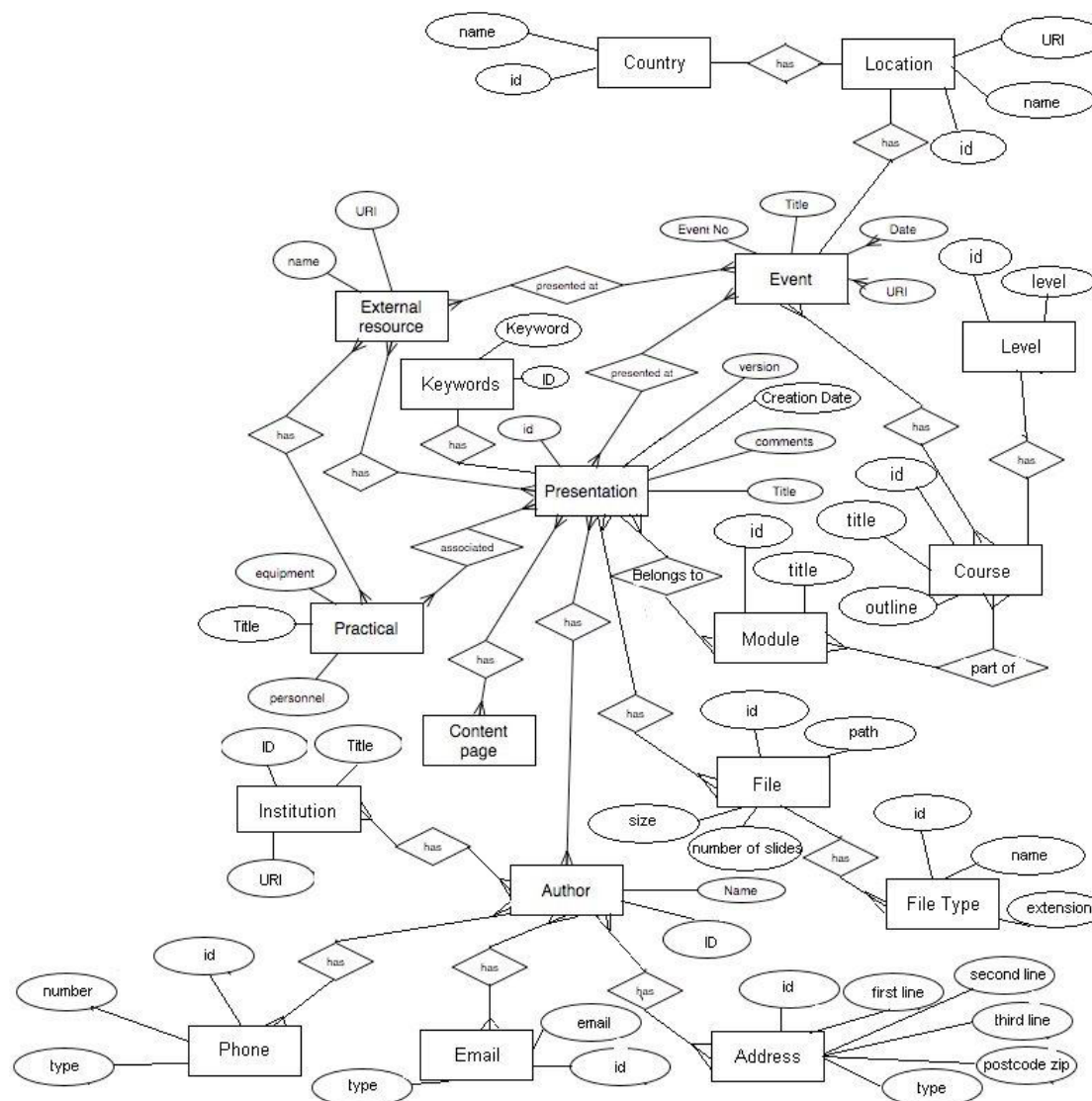
T-Infrastructure provision

Training often requires special e-Infrastructure

- **T-Infrastructure emulates e-Infrastructure**
 - technical, operational & management aspects required by courses
- **T-Infrastructure may anticipate a future platform**
 - Preparing for gLite
 - Preparing for next scheduled release
- **Authentication at (or just before) a course**
 - Flexibility, light-weight – don't frighten the participants
- **Authorisation may restrict imposed loads**
 - Limit student & course impact – e.g. from errors
- **T-Infrastructure may be operated in isolation**
- **Guarantees of availability and response**
 - Student exercises generate peak loads
 - Pedagogical requirement for a quick response

- **GILDA provides a prototyping mechanism to bring applications and communities to EGEE**
- **GENIUS provides a user friendly portal for introducing users to grids**
- **GILDA/GENIUS provide support to training activities**
 - Demo mode, no certificates required
 - Certificated users – special VO, portal access to many applications
 - Developer access to GILDA







Download Training Materials

If you have materials which you would like to be included in the EGEE NA3 repository please email a URL from which they can be uploaded to [David Fergusson](#).

Presentation materials available from the training reposit

Search:

◦ By Presentation

- [Title](#)
- [Keywords](#)

◦ By Event

- [Title](#)
- [Date](#)

April 2004

◦ By Module

EGEE applications introduction

◦ By Course

EGEE Induction



Training Material



[NA3 Home](#)

[Events & Registration](#)

[Suggestions & Requirements](#)

[Course Evaluation](#)

[Training Material](#)

[NA3 Admin & Planning](#)

[Issues](#)

[Deliverables](#)

Download Training Materials

Matches found for search criteria: date

13 presentations were found.

[Adding new applications to EGEE infrastructure \[9\]](#)
Version: 1.0

[Applications on Grids \[2\]](#)
Version: 1.0
[\[Presentation.ppt\]](#)

[EGEE Infrastructure: How to Join as Users, Sites and Virtual Organisations \[12\]](#)
Version: 1.0
[\[Presentation.ppt\]](#)

[EGEE organisation and procedures \[13\]](#)
Version: 1.0
[\[Presentation.ppt\]](#)

[EGEE: Types of Induction \[14\]](#)
Version: 1.0
[\[Presentation.ppt\]](#)

[General components of Grid middleware and User Interface \[15\]](#)

- **Comments under editorial control**
 - All the information is currently to be put into the db manually at NeSC. This is a conscious decision to maintain editorial control – rather than automatic uploading
- **Ask other activities – lists of topics, keywords, glossary items**
 - It may be useful to get the other activities to supply keywords etc that they think are important. This might also serve to highlight areas where training is needed.
- **Index by language**
 - There should be a provision to search for presentations in particular languages.
- **Returning material to archive after translation**
 - Part of the duties of NA3 partners is to provide translations of training material. This could be done by returning translated material for inclusion in the repository.

- **Prerequisites**
 - It should be possible to attach prerequisites to courses and practicals which can be shown to potential users.
- **Need for browsing**
 - It is important that users can browse over the whole archive as well as performing searches.
- **Other search criteria**
 - There are a number of possible search modes not currently implemented in the interface – these will have to be added.
- **Provenance visible (logos ?)**
 - Should logos be included with titles in hits. Malcolm has found this important in the past. Although we have to be aware of issues like needing permission to use the GGF logo.
- **Licensing – openness , a NA3 document licence**
 - The current EGEE licence states that documents can't be modified. This doesn't fit well with the needs of training. To be raised at the PEB.
- **Development space in repository (who is developing what?)**
 - The repository schema could be modified to also contain information about who is developing what courses so that resources can be pooled.

- **Metadata**
 - Date, course topic, module, author, location, language, version, file type, practical resources, external resources, comments, course level
 - used to search for material through query interface
- **Archive now has**
 - over 100 presentations, over 300 files, 34 modules
 - 7 course topics
 - EGEE induction
 - Globus ToolKit
 - LCG2 APIs
 - LCG2 Installation and Administration
 - UML for developing web services
 - Web Services
 - <http://www.egee.nesc.ac.uk/trgmat/index.html>
- **Web-based centralised registration & scheduling of courses**
 - Supported by UEDIN
 - Integrated support using database infrastructure

Revision and refinement of material improves its quality

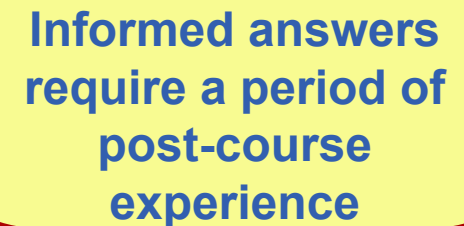
- **Boon Low recently hired**
- **Provide framework for the disparate multimedia/eLearning resources already available**
- **Extend existing archive using Digital Library technologies in a hybrid framework:**
 - Bespoke Web Services
 - Extend existing Fedora/ELF frameworks

Issues and Plans

The training team's primary concerns are

- **Sustain high-quality training across the region needs**
 - Continuous collaboration
 - Focus
 - Leadership
 - Communication
 - Resources
- **Experts under heavy demand needed**
 - to inform planning, preparation and delivery of new courses
 - Consequence of rapidly developing e-Infrastructure
- **Demand for training is growing rapidly**
 - expands with each new community and operational advance

- **All deliverables and milestones met for first 9 months**
- **Next milestones and deliverables:**
 - MNA3.3 External review of User Training and Induction
 - External technology experts, educators & students
 - Independent view to influence planning
 - Follow up survey – what impact does our training have
 - Do people now use EGEE?
 - Work with other e-Infrastructure?
 - Work more effectively within EGEE?
 - ...
 - DNA3.1.3 Training Plan revision
 - DNA3.3.2 Training Progress Report update

A yellow callout box with a red border and a tail pointing to the list of questions. It contains the text: "Informed answers require a period of post-course experience".

**Informed answers
require a period of
post-course
experience**

- **Focus on Application Developer courses**
 - Support new application domains brought in by NA4
 - Partners have been asked for new commitments in this direction
- **The limitations of *ad hoc* t-Infrastructure recognised**
 - UEDIN physical resources to address this requirement.
- **Expansion of the materials archive**
 - Improvements to structure and interface
 - Based on feedback from trainers and self-paced learners

- **Use grid-based technology to present courses**
 - Trialed Access Grid at UEDIN
 - Expect to increase the use of video conference in courses
- **GRNET explored SMIL extensions to XHTML**
 - Associating presenter's audio & video with slide presentations
 - Expect to use extensively for e-Learning
- **Expand e-Learning technology and materials**
 - To provide increased support for training
 - To support self-paced learners
 - New staff member appointed at UEDIN
- **Established User Information Group (UIG)**
 - To improve the provision of information to all EGEE users
 - Accessible, consistent, well-organised for new users
 - Spanning NA2, NA3, NA4, and SA1

- **Established an effective and *federated* collaboration for training**
 - Across the whole of the EGEE geographic area
- **Significantly exceeding our first year goals**
 - In the provision of training
- **Identified and met the requirement for t-Infrastructure**
 - Pioneering its provision with GILDA
 - Establishing shared training material repository
- **Training has been extended to many other countries**
 - Bringing new communities to EGEE
- **Plans**
 - Focus on application developer and advanced courses
 - Further develop training support mechanisms
 - t-Infrastructure, e-Learning & gLite migration support
 - Respond adroitly to new requirements

- Existing EDG tutorials
- JRA1 test suite

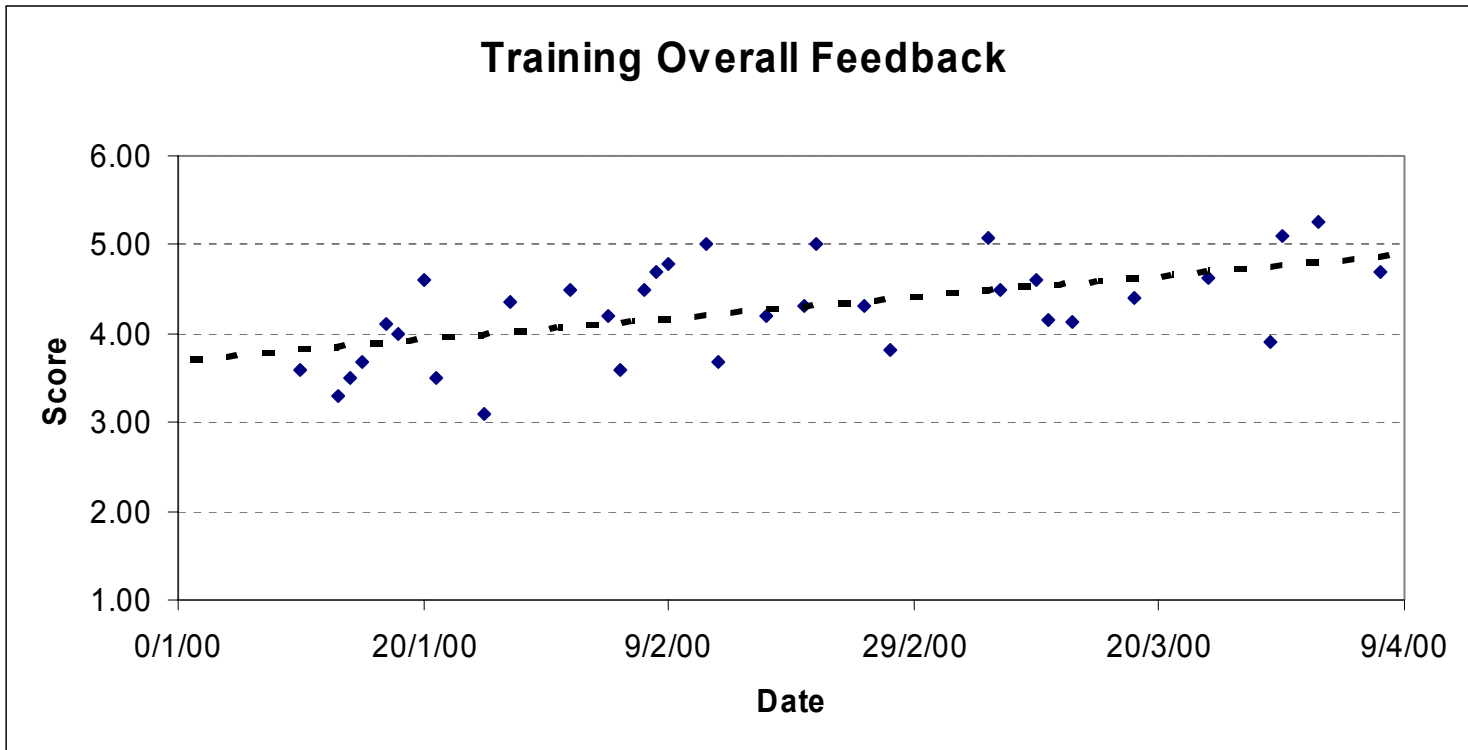
- **SMIL - Christos – investigation and reporting on using SMIL.**
 - Christos from GRNET demonstrated a net based application for providing synched video and slides. He will provide documentation for this system so that it can be evaluated for use in NA3.
- **Ruediger – video of presentations at GridKa**
 - All of the presentations at the GridKA courses had been videoed and will be made available on the web. It was noted that these resources should be linked through the NA3 site and in the repository.
- **Editing Roberto's video**
 - NeSC has promised to help review the GENIUS training video and to link it on the site and add it to the repository.
- **Ruediger – linux CD distro (XEN) for training grid (grid in a box) - workshop.**
 - Ruediger suggested that the XEN CD based Linux distribution may be a viable basis for a 'course in a box'. A workshop with interested parties to try to put this together was suggested.
- **Multiple approaches (but not too many) – get on with it!**
 - Malcolm noted that the important thing was to get going!

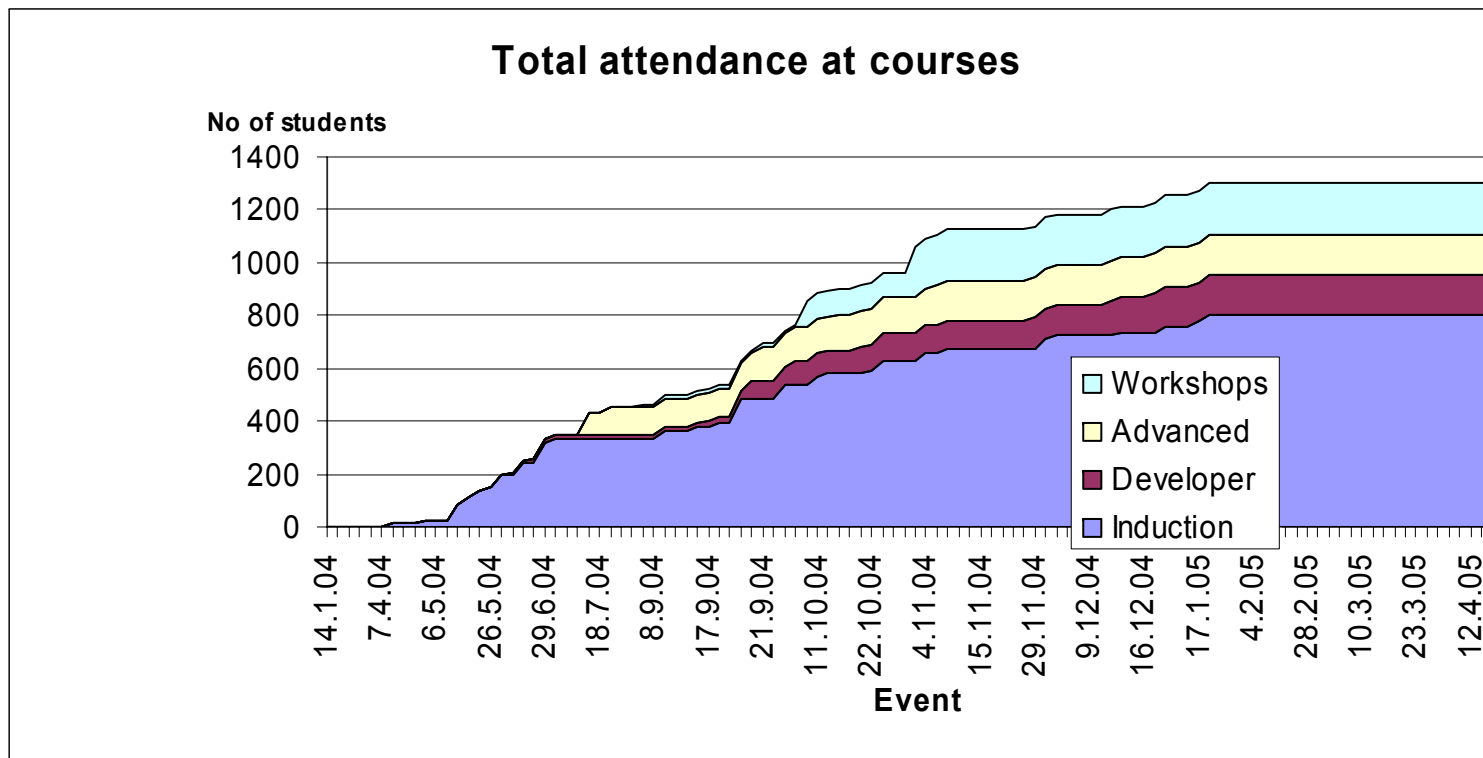


Enabling Grids for E-science

Expanding and extending the training activity

- **ICEAGES SSA**
- **EGEE II**





- **Recognized at 2nd EGEE conference, den Haag December 2004 that coordination of EGEE documentation is required.**
- **UIG group formed on an initiative from the NA3/NA2/NA4 meeting.**
- **Work plan agreed with Project Executive Board (PEB)**
 - Segregating documentation into: User, Application Developer, Operations for collation.

Comments and Questions Please