

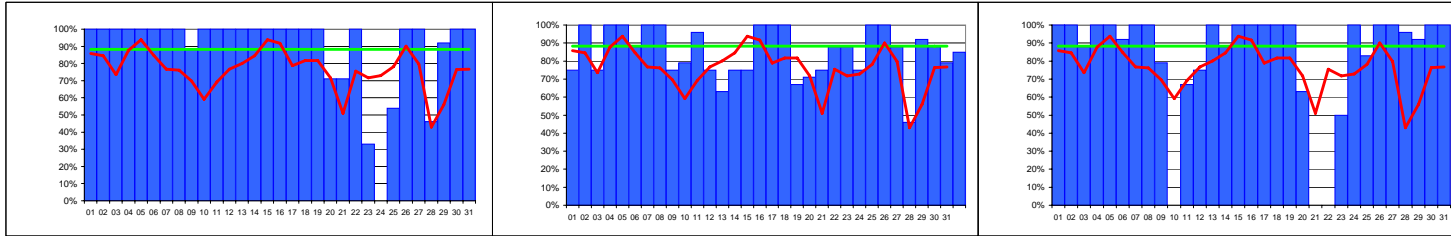


Availability of WLCG Tier-1 Sites + CERN May 2006

Data from SAM monitoring. Site availability as agreed in WLCG MB on 07mar06 and 04apr06. Service considered unavailable from time of first failure to time of next success. Scheduled interruptions are considered as unavailable.

average (all sites) — 77% — target 88%

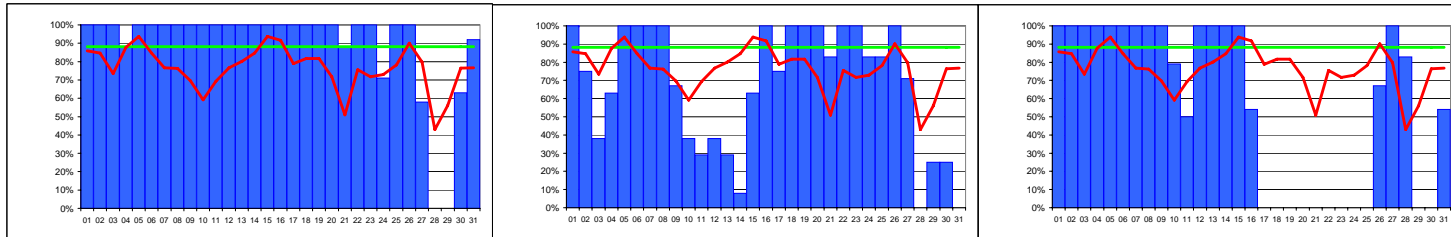
site average colour coding: < 90% of target ≥ 90% of target ≥ target



CERN-PROD average 89%

FZK-LCG2 average 85%

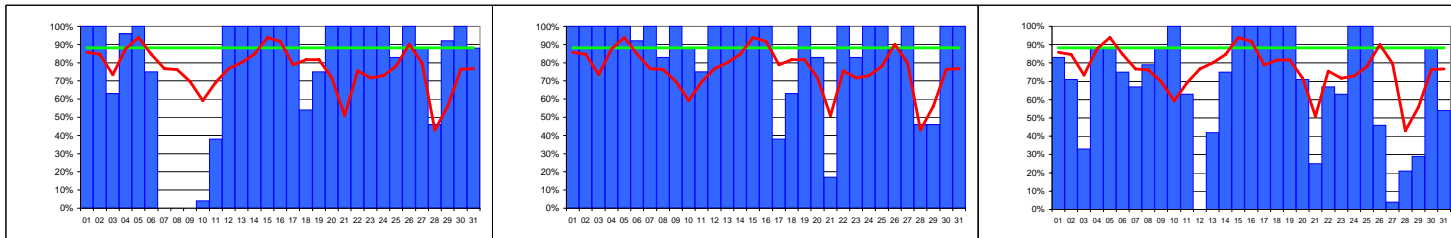
IN2P3-CC average 83%



INFN-T1 average 89%

RAL-LCG2 average 68%

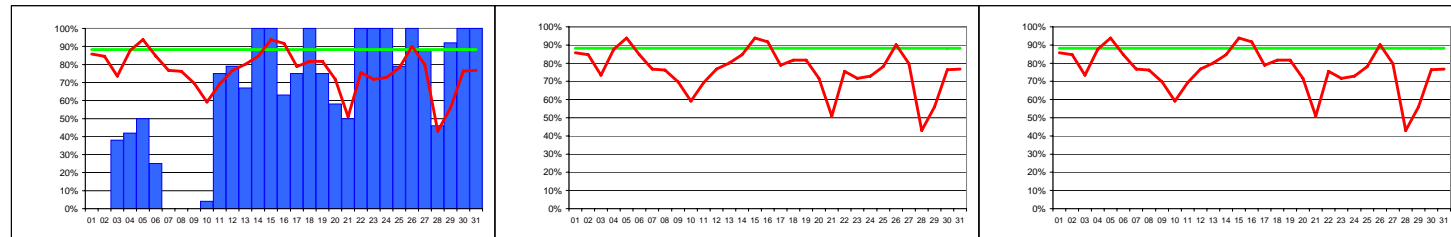
SARA-MATRIX average 58%



TRIUMF-LCG2 average 77%

Taiwan-LCG2 average 87%

USCMS-FNAL-WC1 average 68%



PIC average 61%

BNL average n/a

NDGF average n/a



SAM - Service Availability Monitoring Data

May 2006

Colour coding limits: **≥TARGET:**

88%

90% OF
TARGET:

79%

WLCG Tier-1s + CERN

Data from SAM monitoring. Site availability as agreed in WLCG MB on 07mar06 and 04apr06. Service considered unavailable from time of first failure to time of next success. Scheduled interruptions are considered as unavailable.

Date		CERN-PROD	FZK-LCG2	IN2P3-CC	INFN-T1	RAL-LCG2	SARA-MATRIX	TRIUMF-LCG2	Taiwan-LCG2	USCMS-FNAL WC1	PIC	average - all Tier-1s	target	BNL-LCG2	NDGF
01/05/2006	1	100%	75%	100%	100%	100%	100%	100%	100%	83%	0%	86%	88%	0%	0%
02/05/2006	2	100%	100%	100%	100%	75%	100%	100%	100%	71%	0%	85%	88%	0%	0%
03/05/2006	3	100%	75%	88%	100%	38%	100%	63%	100%	33%	38%	74%	88%	0%	0%
04/05/2006	4	100%	100%	100%	100%	63%	100%	96%	100%	88%	42%	88%	88%	0%	0%
05/05/2006	5	100%	100%	100%	100%	100%	100%	100%	100%	88%	50%	94%	88%	0%	0%
06/05/2006	6	100%	88%	92%	100%	100%	100%	75%	92%	75%	25%	85%	88%	0%	0%
07/05/2006	7	100%	100%	100%	100%	100%	100%	0%	100%	67%	0%	77%	88%	0%	0%
08/05/2006	8	100%	100%	100%	100%	100%	100%	0%	83%	79%	0%	76%	88%	0%	0%
09/05/2006	9	88%	75%	79%	100%	67%	100%	0%	100%	88%	0%	70%	88%	0%	0%
10/05/2006	10	100%	79%	0%	100%	38%	79%	4%	88%	100%	4%	59%	88%	0%	0%
11/05/2006	11	100%	96%	67%	100%	29%	50%	38%	75%	63%	75%	69%	88%	0%	0%
12/05/2006	12	100%	75%	75%	100%	38%	100%	100%	100%	0%	79%	77%	88%	0%	0%
13/05/2006	13	100%	63%	100%	100%	29%	100%	100%	100%	42%	67%	80%	88%	0%	0%
14/05/2006	14	100%	75%	88%	100%	8%	100%	100%	100%	75%	100%	85%	88%	0%	0%
15/05/2006	15	100%	75%	100%	100%	63%	100%	100%	100%	100%	100%	94%	88%	0%	0%
16/05/2006	16	100%	100%	100%	100%	100%	54%	100%	100%	100%	63%	92%	88%	0%	0%
17/05/2006	17	100%	100%	100%	100%	75%	0%	100%	38%	100%	75%	79%	88%	0%	0%
18/05/2006	18	100%	100%	100%	100%	100%	0%	54%	63%	100%	100%	82%	88%	0%	0%
19/05/2006	19	100%	67%	100%	100%	100%	0%	75%	100%	100%	75%	82%	88%	0%	0%
20/05/2006	20	71%	71%	63%	100%	100%	0%	100%	83%	71%	58%	72%	88%	0%	0%
21/05/2006	21	71%	75%	0%	88%	83%	0%	100%	17%	25%	50%	51%	88%	0%	0%
22/05/2006	22	100%	88%	0%	100%	100%	0%	100%	100%	67%	100%	76%	88%	0%	0%
23/05/2006	23	33%	88%	50%	100%	100%	0%	100%	83%	63%	100%	72%	88%	0%	0%
24/05/2006	24	0%	75%	100%	71%	83%	0%	100%	100%	100%	100%	73%	88%	0%	0%
25/05/2006	25	54%	100%	83%	100%	83%	0%	83%	100%	100%	79%	78%	88%	0%	0%
26/05/2006	26	100%	100%	100%	100%	100%	67%	100%	88%	46%	100%	90%	88%	0%	0%
27/05/2006	27	100%	88%	100%	58%	71%	100%	88%	100%	4%	88%	80%	88%	0%	0%
28/05/2006	28	46%	46%	96%	0%	0%	83%	46%	46%	21%	46%	43%	88%	0%	0%
29/05/2006	29	92%	92%	92%	0%	25%	0%	92%	46%	29%	92%	56%	88%	0%	0%
30/05/2006	30	100%	88%	100%	63%	25%	0%	100%	100%	88%	100%	76%	88%	0%	0%
31/05/2006	31	100%	79%	100%	92%	0%	54%	88%	100%	54%	100%	77%	88%	0%	0%
Average		89%	85%	83%	89%	68%	58%	77%	87%	68%	61%	77%	88%	0%	0%