



# Availability of WLCG Tier-1 Sites + CERN 1 July - 17 August 2006

Data from SAM monitoring. Site availability and reliability as agreed in WLCG MB on 11 July 2006 (scheduled interruptions are excluded when calculating reliability)

legend:

tests passed  
scheduled down



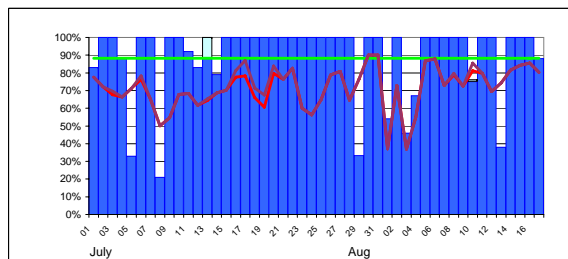
average (all sites):

availability  
71%

reliability  
72%

target  
88%

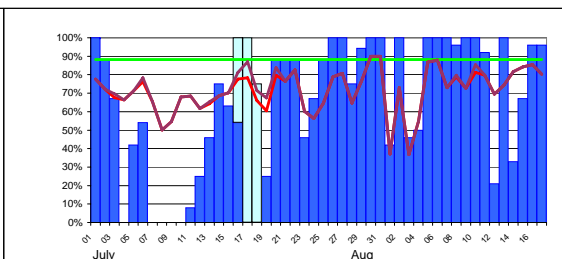
site average colour coding: < 90% of target ≥ 90% of target ≥ target



CERN-PROD

avail: 89%

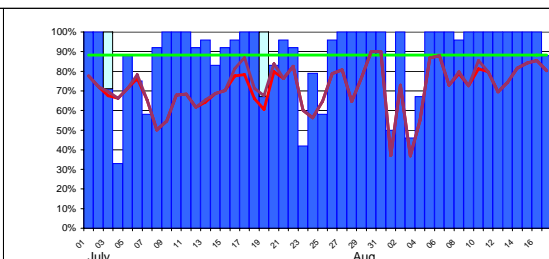
reliability: 89%



FZK-LCG2

avail: 63%

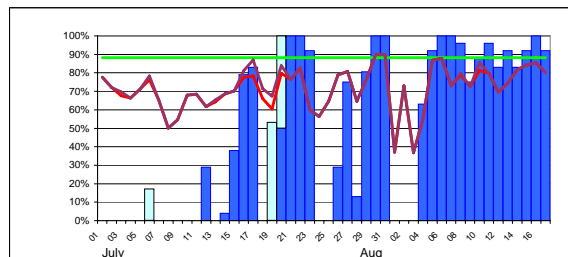
reliability: 66%



IN2P3-CC

avail: 88%

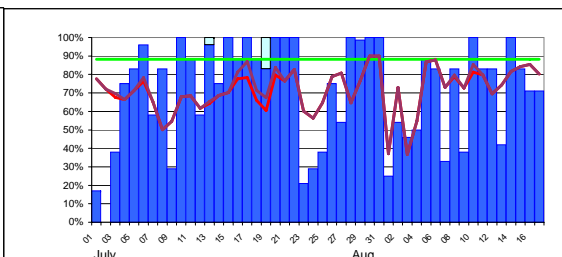
reliability: 89%



INFN-T1

avail: 46%

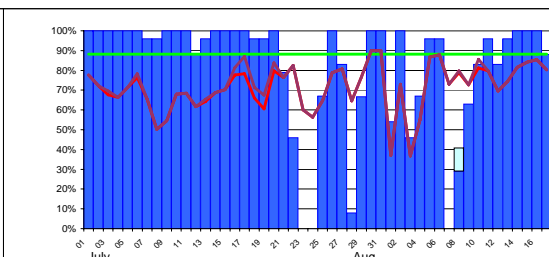
reliability: 48%



RAL-LCG2

avail: 71%

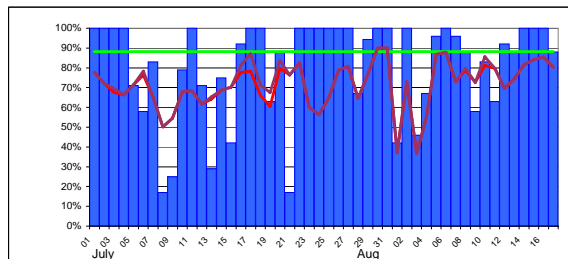
reliability: 71%



SARA-MATRIX

avail: 82%

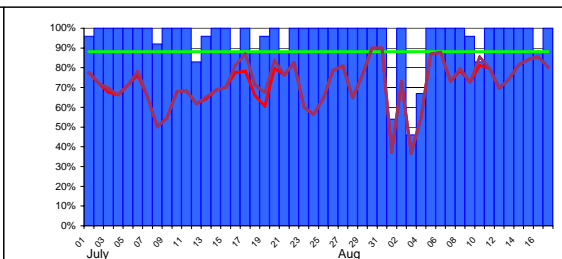
reliability: 82%



TRIUMF-LCG2

avail: 81%

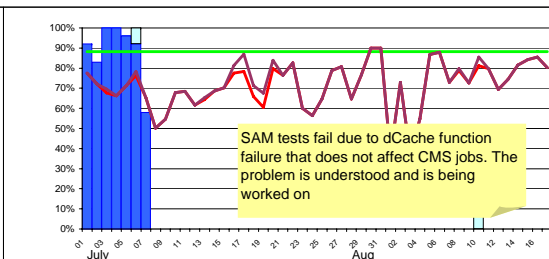
reliability: 81%



Taiwan-LCG2

avail: 95%

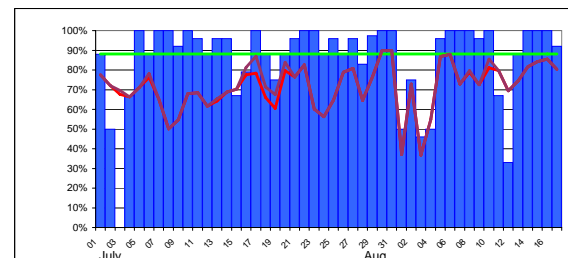
reliability: 95%



USCMS-FNAL-WC1

avail: 13%

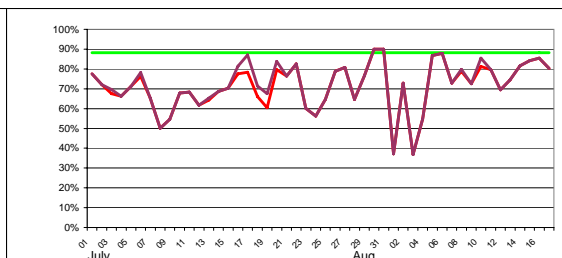
reliability: 13%



PIC

avail: 85%

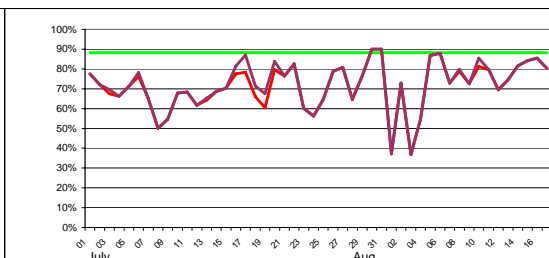
reliability: 85%



BNL

avail: n/a

reliability: 0%



NDGF

avail: n/a

reliability: 0%