



Enabling Grids for E-science

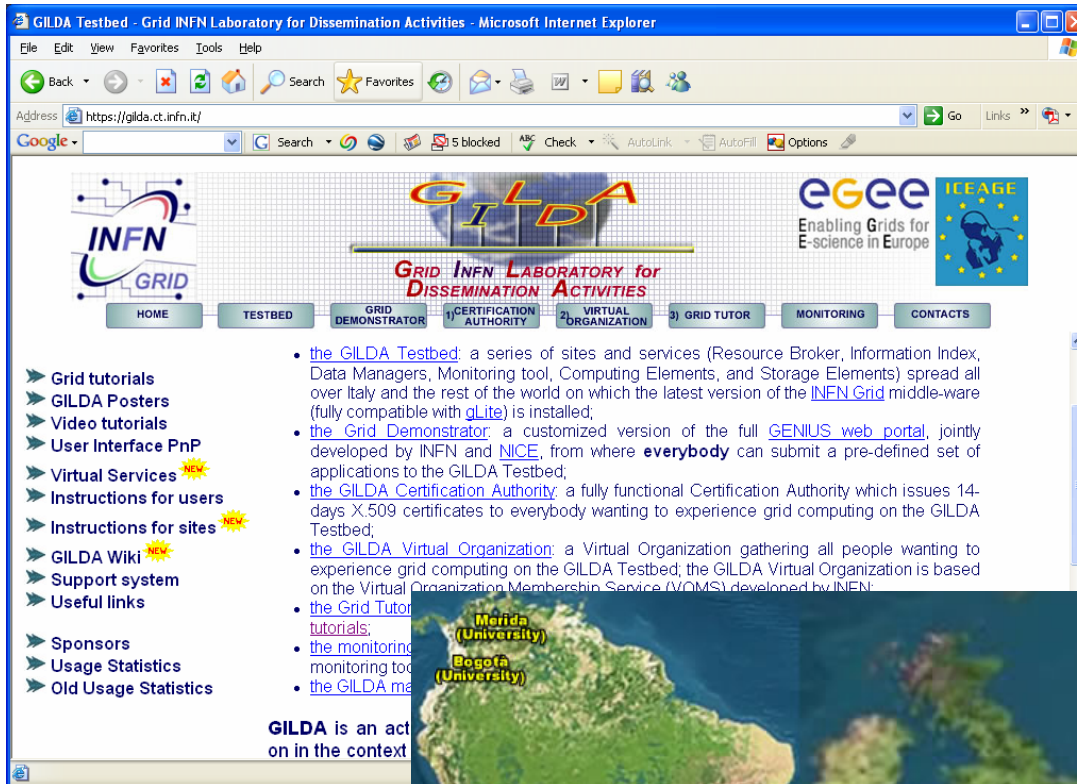
GILDA

(Grid INFN Laboratory for Dissemination Activities)

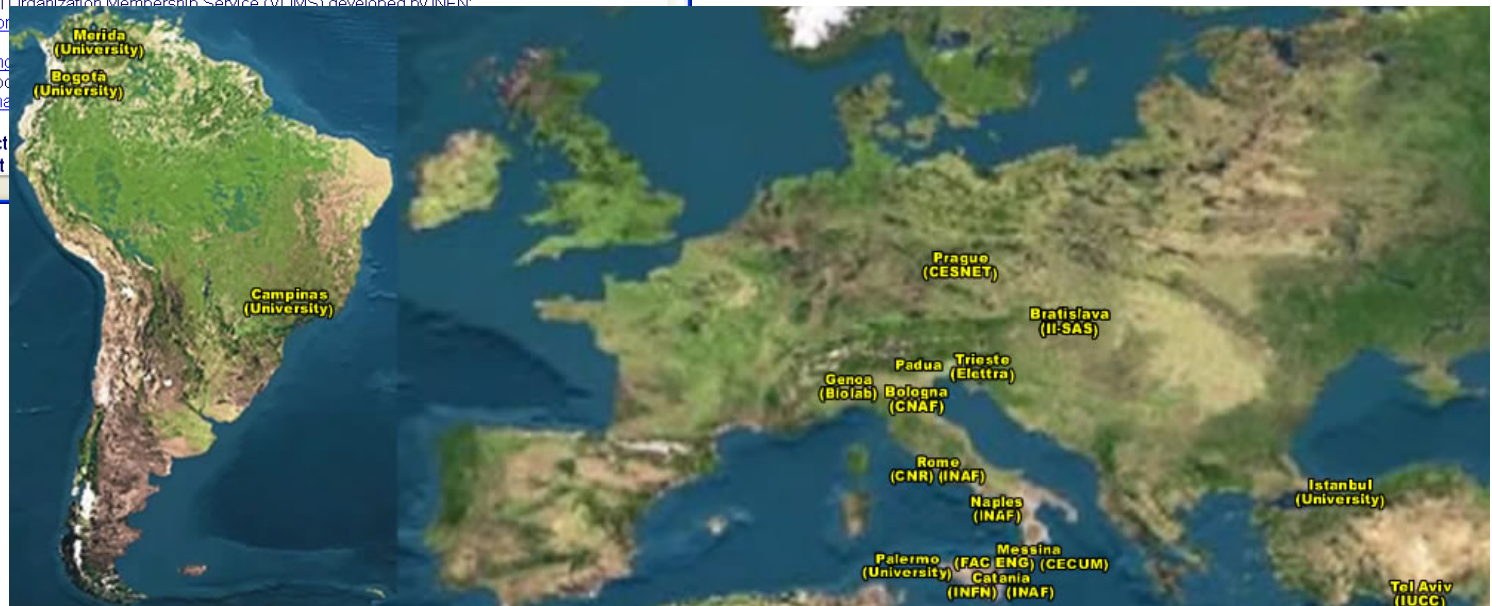
Guy Warner
NeSC TOE Team

www.eu-egee.org




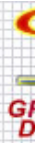


- 19 sites in 3 continents
- Runs current gLite release
- You can apply for GILDA account/certificate after today!



- **What is t-Infrastructure?**
 - e-Infrastructure is for production
 - t-Infrastructure is for training
- **Need guaranteed response for tutorials; limit the vulnerability of production systems**
 - use training grid
 - have training CA
 - able to change middleware to prepare participants for future releases on production system
 - need safe resources for installation training
 - easy entry point for new communities





Geo view Site view VO view Help About

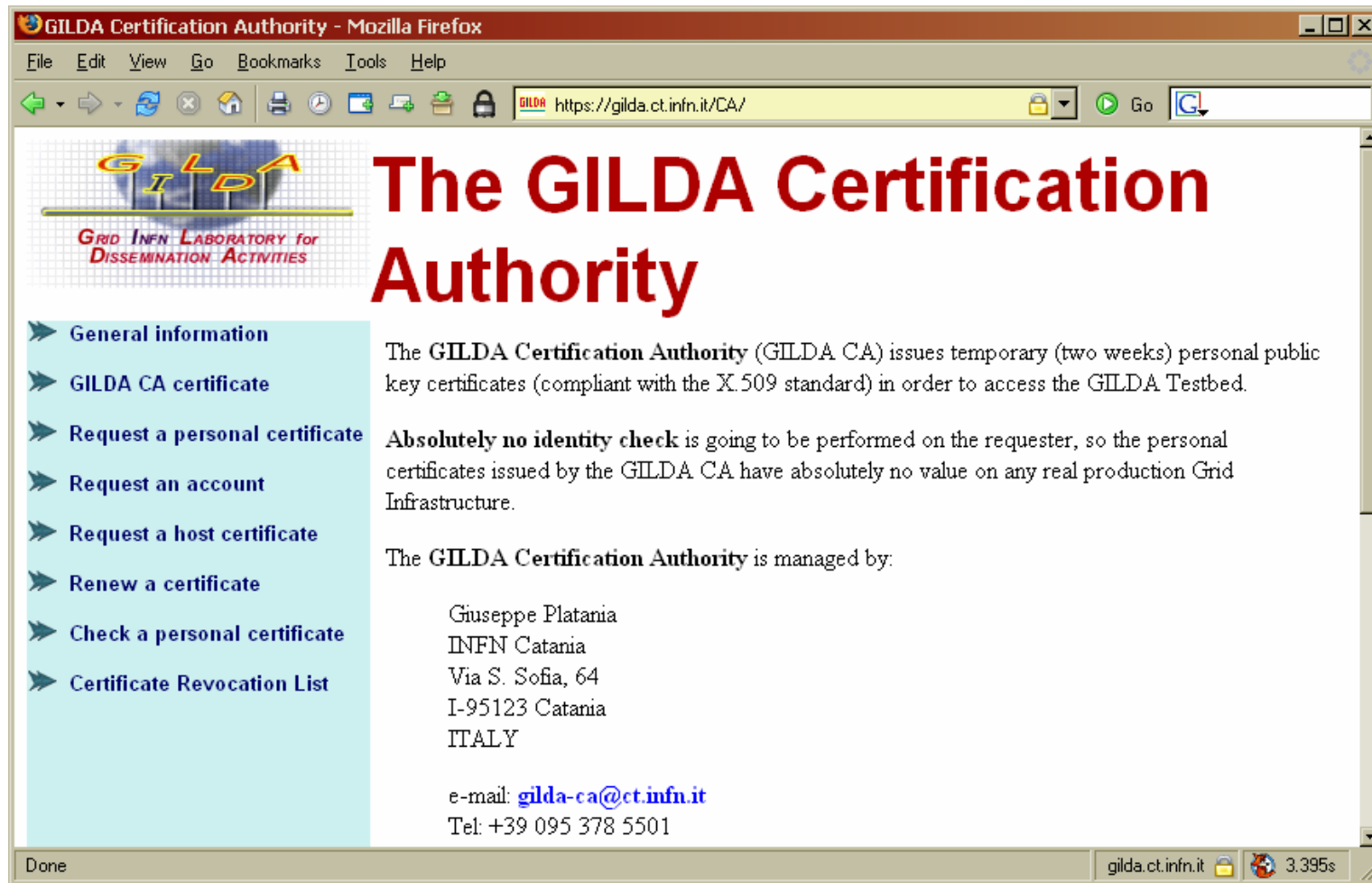
GridICE >> Site::ALL

XML

General Gris Host Job Charts Network

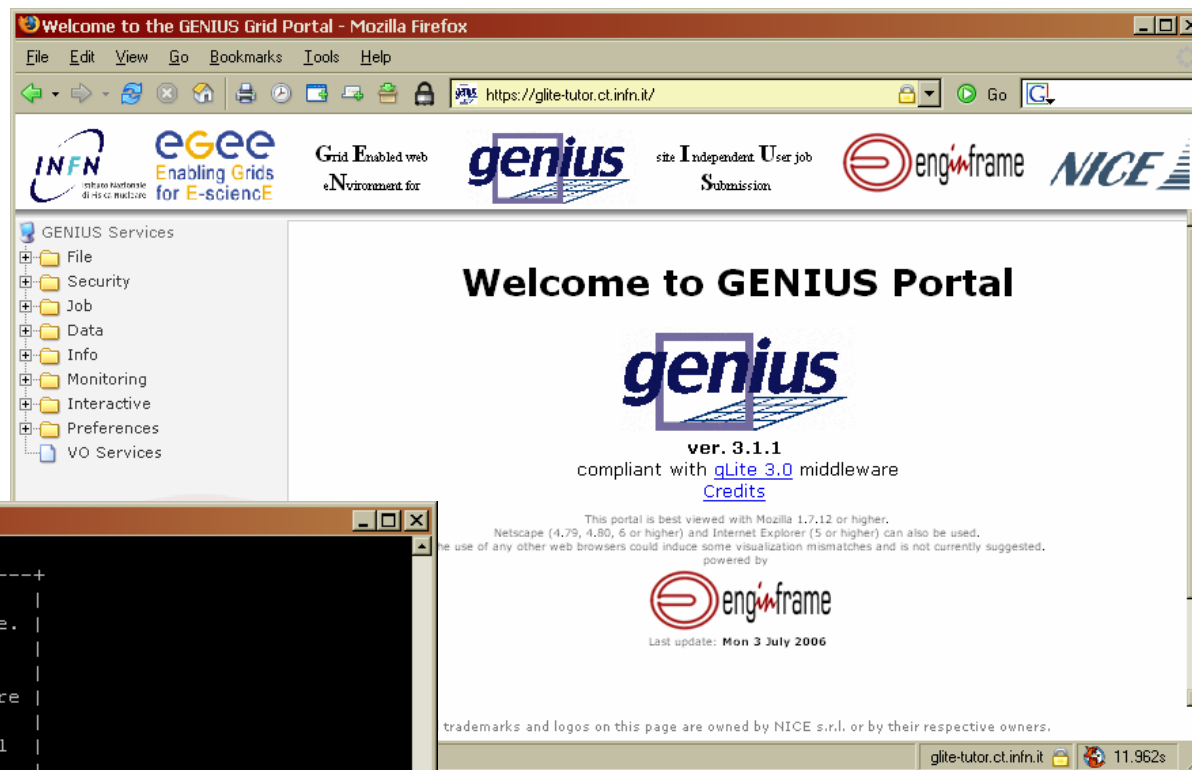
Site ▼	All			Broker			BDII			CE			SE			
	Total			Total			Total			Total			Total			Total
ALL SITES	70	11	7	1	0	0	1	0	0	7	3	0	11	0	1	10
CENAPAD-UNICAMP	-	-	-	-	-	-	-	-	-	-	-	-	-	-	-	-
CNR-ROMA	10	1	-	<u>1</u>	-	-	<u>1</u>	-	-	<u>1</u>	-	-	<u>1</u>	-	-	<u>1</u>
DIST-GENOVA	4	1	-	-	-	-	-	-	-	-	-	-	<u>1</u>	-	-	<u>1</u>
ELETTRA-TRIESTE	-	-	-	-	-	-	-	-	-	-	-	-	-	-	-	-
GILDA-ROMA3	-	-	-	-	-	-	-	-	-	-	-	-	-	-	-	-
IHEP-BEIJING	2	-	-	-	-	-	-	-	-	<u>1</u>	-	-	-	-	-	-
IISAS-GILDA	-	-	-	-	-	-	-	-	-	-	-	-	-	-	-	-
INAF-CATANIA	-	-	-	-	-	-	-	-	-	-	-	-	-	-	-	-
INFN-CATANIA	3	1	-	-	-	-	-	-	-	-	-	-	<u>1</u>	-	-	<u>1</u>
INFN-CNAF	14	2	-	-	-	-	-	-	-	<u>1</u>	-	-	<u>2</u>	-	-	<u>2</u>
INFN-PADOVA	12	2	2	-	-	-	-	-	-	<u>1</u>	1	-	<u>2</u>	-	-	<u>1</u>
ING-MESSINA	8	2	1	-	-	-	-	-	-	<u>1</u>	1	-	<u>1</u>	-	-	<u>1</u>
ITU-Turkey	-	-	-	-	-	-	-	-	-	-	-	-	-	-	-	-
IUCC-LCG2	9	1	-	-	-	-	-	-	-	<u>1</u>	-	-	<u>1</u>	-	-	<u>1</u>
TRIGRID-UNIPA	4	-	4	-	-	-	-	-	-	-	-	-	<u>1</u>	-	1	<u>1</u>
ULA-MERIDA	-	-	-	-	-	-	-	-	-	-	-	-	-	-	-	-
prague_cesnet_gilda	-	4	1	-	-	-	-	-	-	<u>1</u>	1	-	<u>1</u>	-	-	<u>1</u>

Generated: Wed, 13 Sep 2006 17:04:12 +0200



<https://gilda.ct.infn.it/CA/>

- Training Usage
- All users in “gilda” VO
- Two ways of accessing:
 - Portal
 - Command Line



```

karlsruhe80@glite-tutor:~
karlsruhe80@glite-tutor.ct.infn.it's password:
-----
| Welcome to glite-tutor.ct.infn.it.
| This is a GILDA User Interface based on gLite.
| The user files available on this machine are
| not backed up anywhere. If you develop
| something important here, back it up somewhere
| else by yourself.
| In case of any problems, please send an email
| to grid-prod@ct.infn.it
|-----
|
|          ATTENTION!
|
| Since the 1st of January 2006 GILDA supports
| VOMS authentication only! In order to login on
| the grid, please use the command:
|
| voms-proxy-init --voms gilda
|
| instead of:
|
| grid-proxy-init
|-----
[karlsruhe80@glite-tutor karlsruhe80]$
    
```