



Enabling Grids for E-science

APROC

Min Tsai

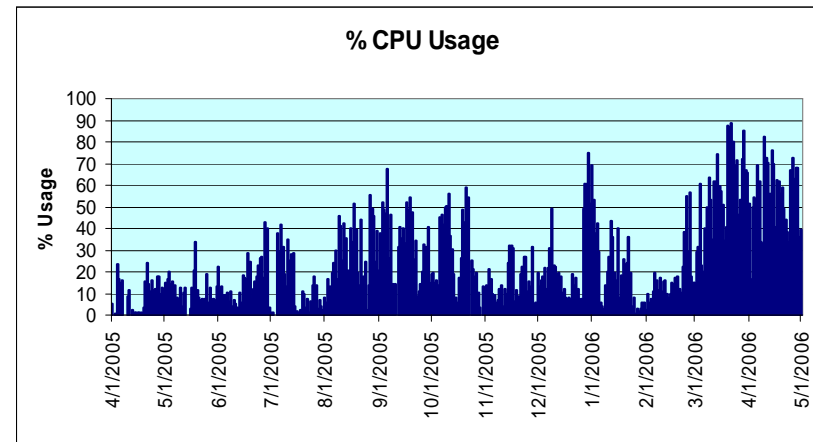
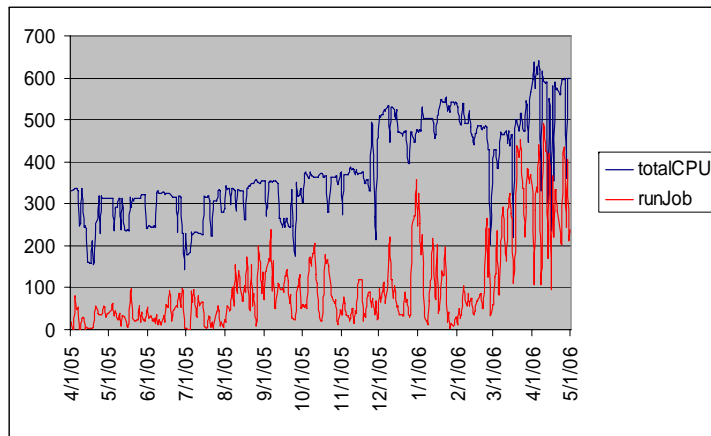
ARM-7 Krakow

www.eu-egee.org



- **Centralized ROC at ASGC**
- **ROC Team**
 - Min Tsai
 - ROC manager
 - Shu-Ting Liao
 - ROC deputy manager, ROC support, CIC, LFC support
 - Jinny Chien
 - Security, ROC support, CIC, VOMS support
- **T1 and Operations Team support**
 - Jason Shih and HungChe Jen
 - Second line expert support
 - Howard Su
 - CA administrator
 - Joanna Huang
 - ROC application developer

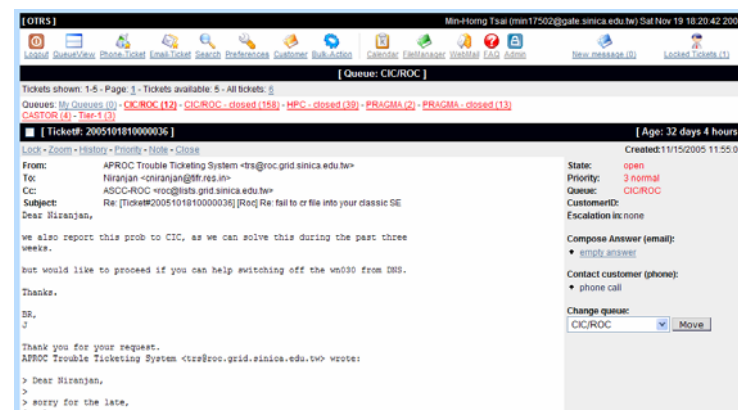
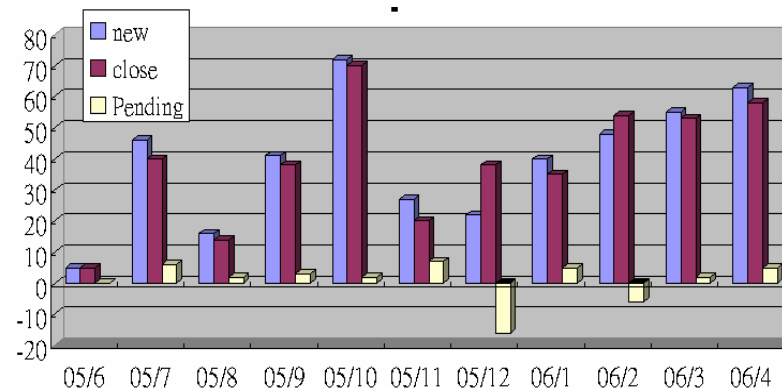
- 11 sites, 6 countries
 - Japan, India, Korea, Pakistan, Singapore, Taiwan
 - Under certification
 - 5 sites: *Australia, Japan, Pakistan, Taiwan*
- 590 CPUs, 30 TB
- Supported VOs
 - atlas, alice,, biomed, cms, dteam, lhcb, ops, sixt
 - apdg, belle, twgrid
- Increasing resources, but also % utilization



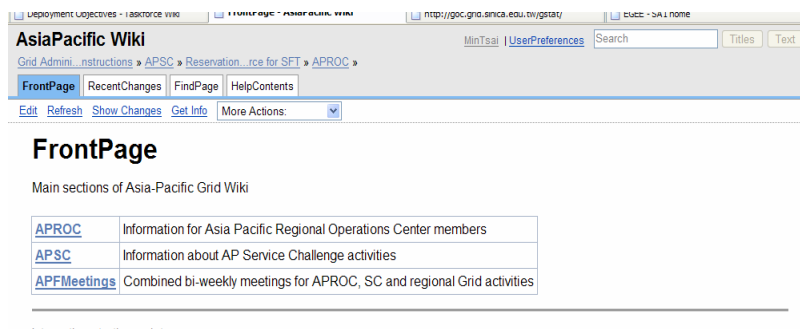
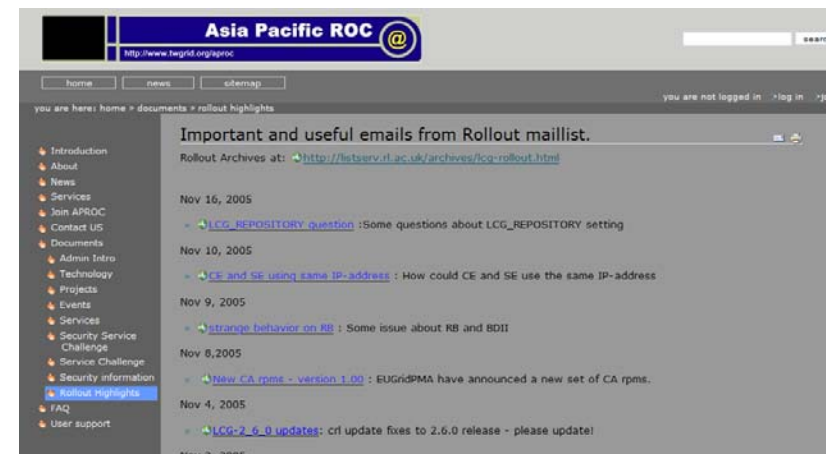
- **ROC support**
 - First line support via ROC Team
 - Site divided between members
 - Considering rotation instead
 - Second line support by T1 Team

- **TRS ticketing system used**
 - Emails from GGUS are forwarded to TRS
 - Manual updates via GGUS interface
 - Integration delay from lack of programming HR

- **Improve Grid knowledge**
 - Specializations for each member
 - PPS and T2 site management
 - Hold hands-on tutorials for admins
 - 2 day – Technology and Operations



- www.twgrid.org/aproc
 - Rollout Highlights
 - Getting started links
 - **Registration & Deployment** information
- lists.grid.sinica.edu.tw/apwiki
 - Supplementary release notes
 - Site Operations **Procedures**
 - Technical **Howtos**
 - Trouble Shooting **FAQs**
 - Tutorial instructions



- **Operations support need to**
 - Allocate time to learn about gLite components
 - Develop remote diagnostic tools
 - Write trouble shooting guides
- **Availability**
 - RM problems sensitive to IS server performance
 - Upgrading central BDII
 - Network issues are a common cause
 - SmokePing for regional monitoring
 - CERN tests will be helpful: e2emonit
- **Software development: GStat, GGUS, etc..**
 - New hire in training
- **Join TPM and TPM management**