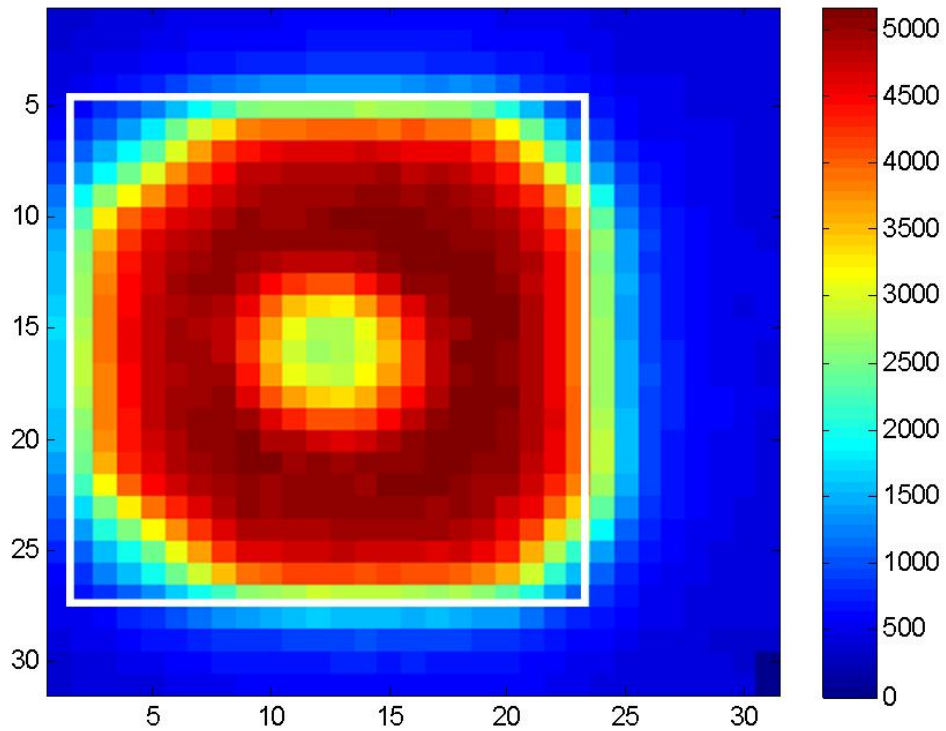


Second\_PixelScan75um2\_5umStepSize

5V - White square is pixel boundary size, with quick guess to its position.

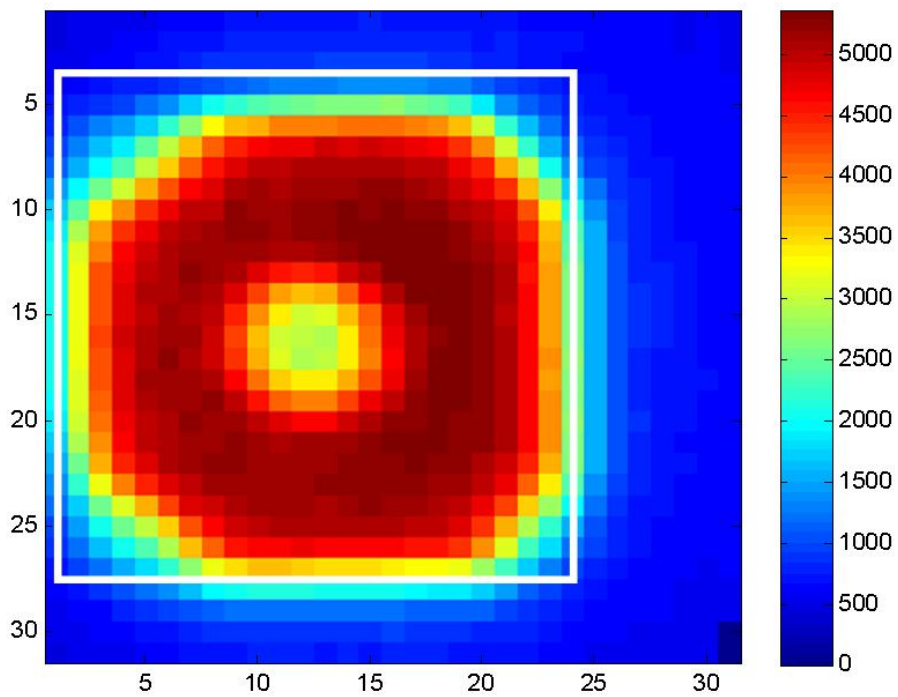
PixelMap (Col,Row)=(120,156)

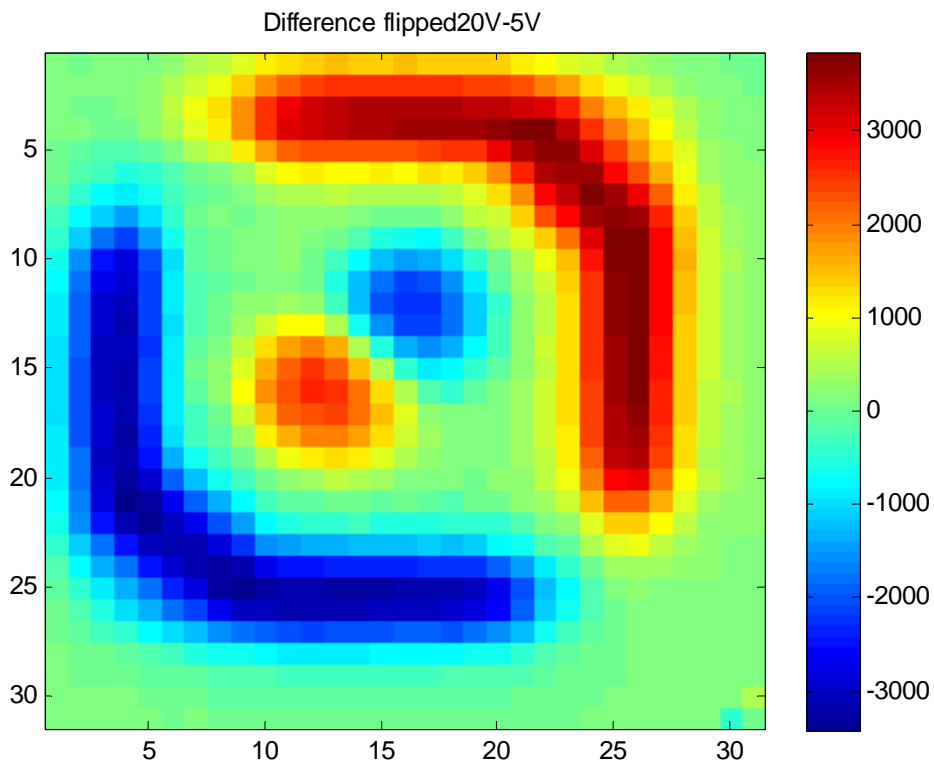
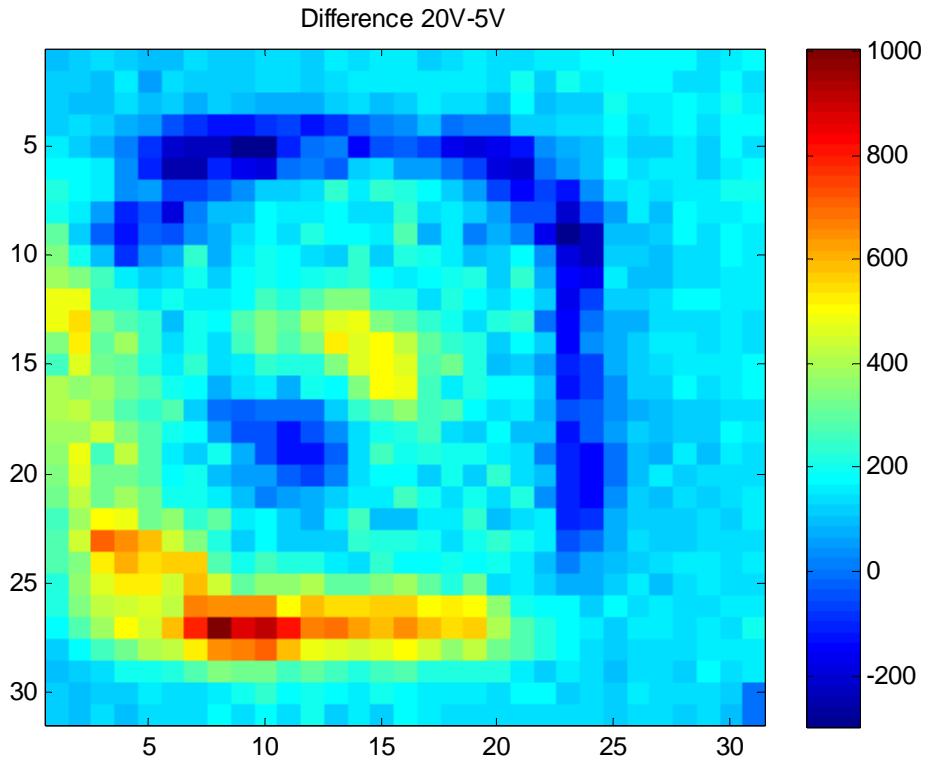


ThirdScan\_20V\_PixelScan75um2\_5um

20V- White square is pixel boundary size, with quick guess to its position.

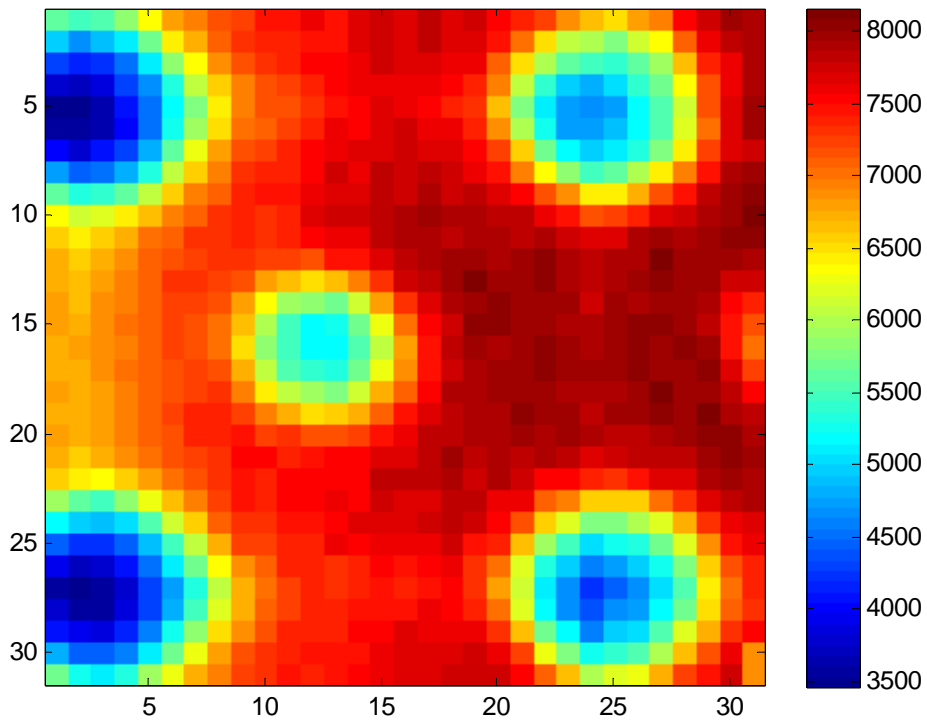
PixelMap (Col,Row)=(120,156)



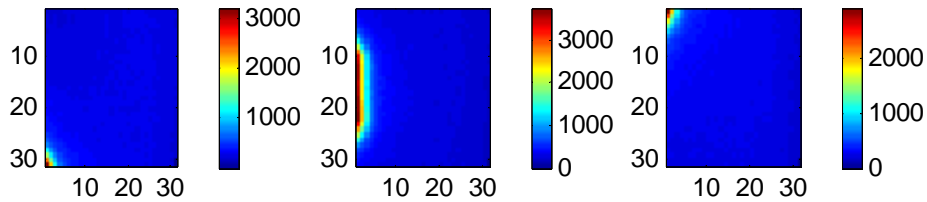


**Not sure if this helps but defo should be a logo for something!!!**

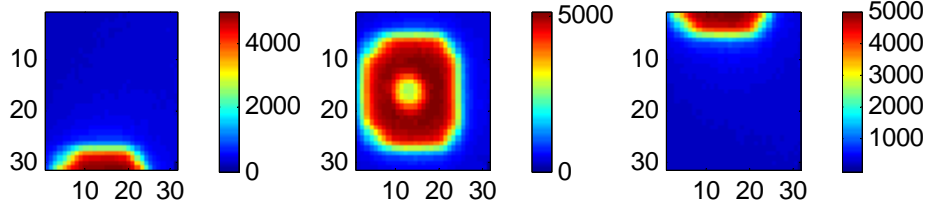
Combined for all the images of neighbouring pixels 5V, i think



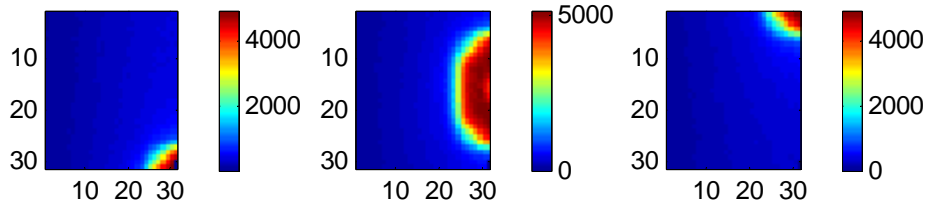
1st (Col,Row)=(119,155) 4th (Col,Row)=(119,156) 6th (Col,Row)=(119,157)



2nd (Col,Row)=(120,155) PixelMap (Col,Row)=(120,156) 7th (Col,Row)=(120,157)



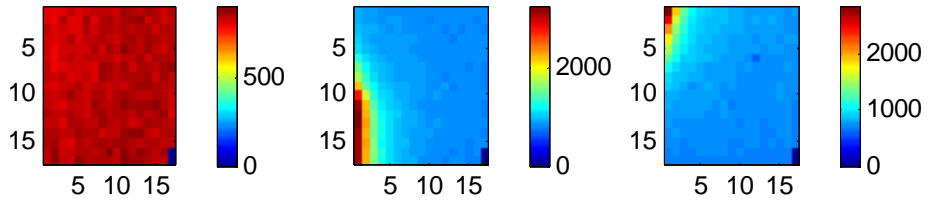
3rd (Col,Row)=(121,155) 5th (Col,Row)=(121,156) 8th (Col,Row)=(121,157)



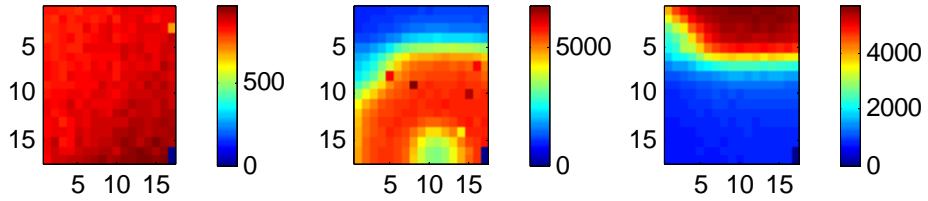
**(Celeste) Fourthscan\_20V\_THL368\_quarter\_PixelScan75sum2\_5um**

20V- Scan over 1/4 of a pixel, THL is 368, close to noise

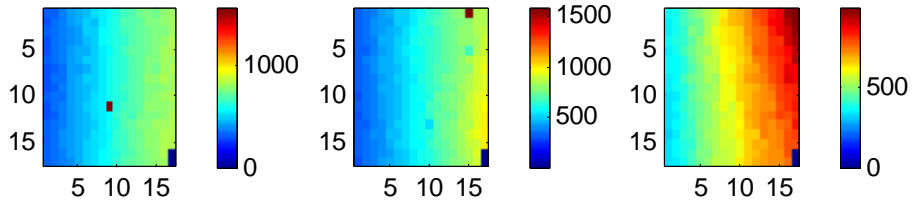
1st (Col,Row)=(119,155)    4th (Col,Row)=(119,156)    6th (Col,Row)=(119,157)



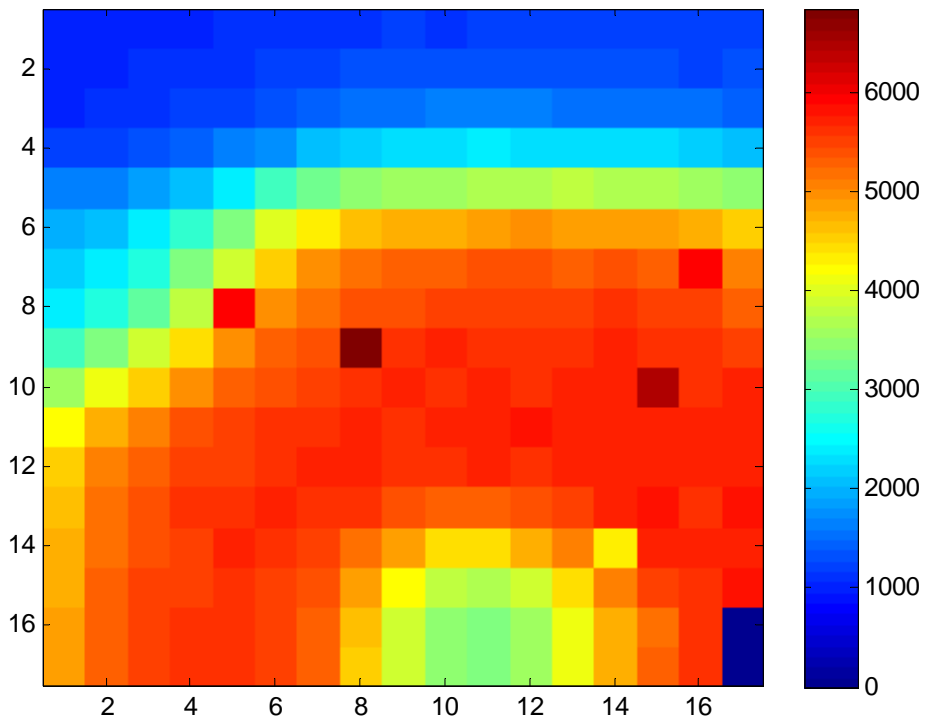
2nd (Col,Row)=(120,155) PixelMap (Col,Row)=(120,156) 7th (Col,Row)=(120,157)



3rd (Col,Row)=(121,155)    5th (Col,Row)=(121,156)    8th (Col,Row)=(121,157)



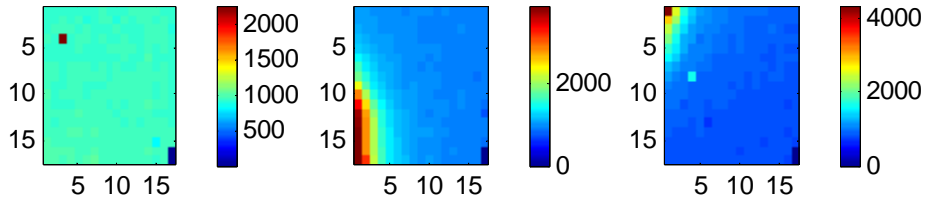
PixelMap (Col,Row)=(120,156)



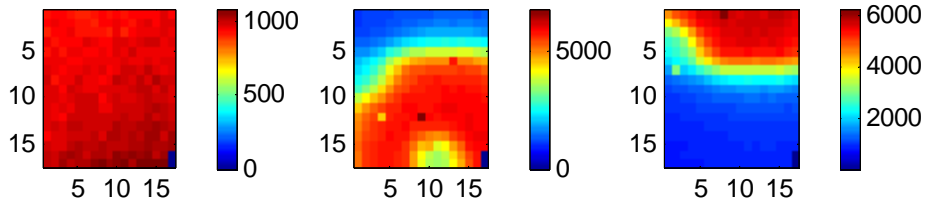
**(Celeste) Fifthscan\_5V\_THL368\_quarter\_PixelScan75sum2\_5um**

**5V**- Same scan as above, over 1/4 of a pixel, THL is 368, close to noise. This time V=5V

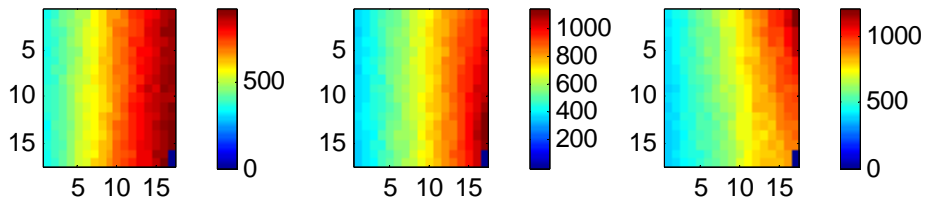
1st (Col,Row)=(119,155) 4th (Col,Row)=(119,156) 6th (Col,Row)=(119,157)



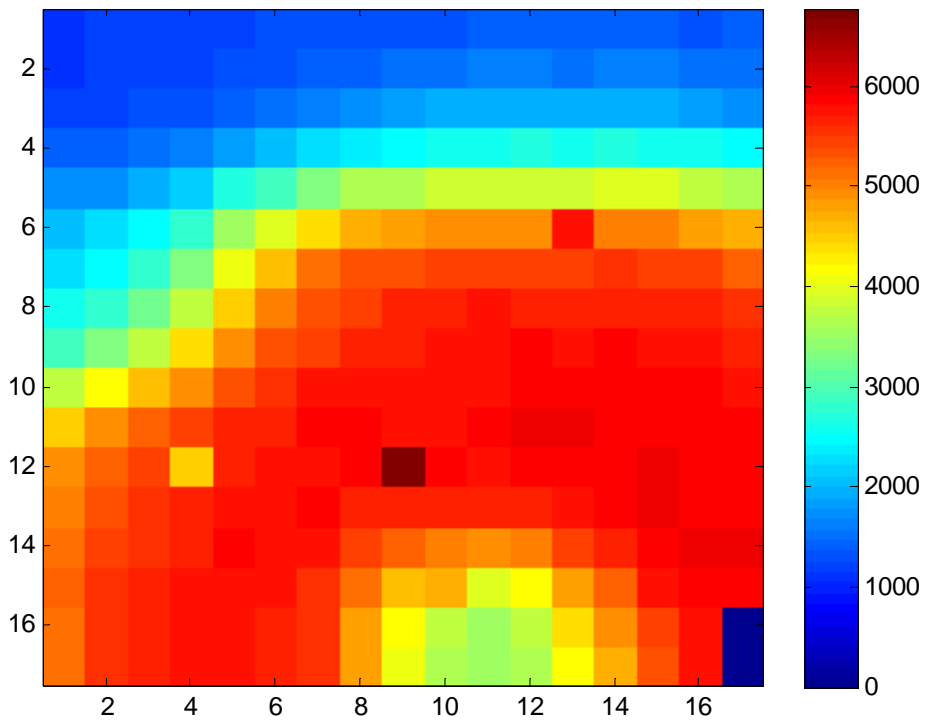
2nd (Col,Row)=(120,155) PixelMap (Col,Row)=(120,156) 7th (Col,Row)=(120,157)



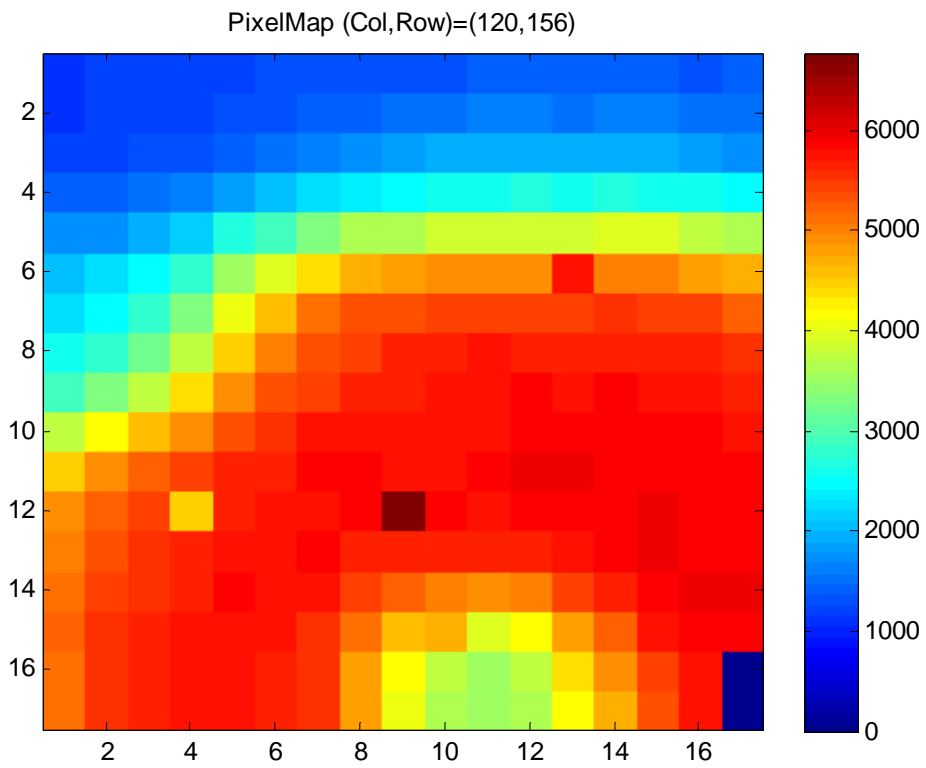
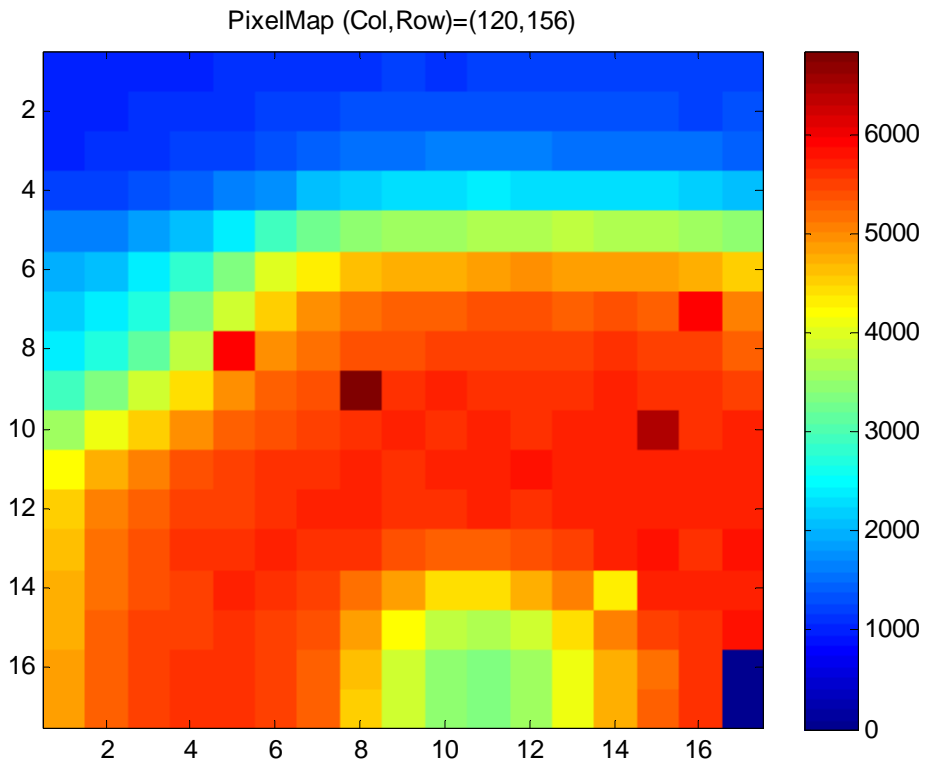
3rd (Col,Row)=(121,155) 5th (Col,Row)=(121,156) 8th (Col,Row)=(121,157)



PixelMap (Col,Row)=(120,156)



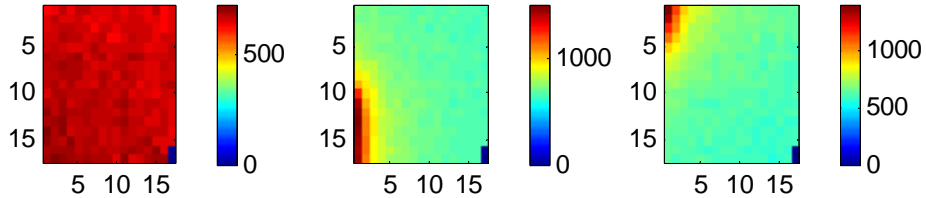
Comparison 20V (top) – 5V (down). THL close to noise, 368



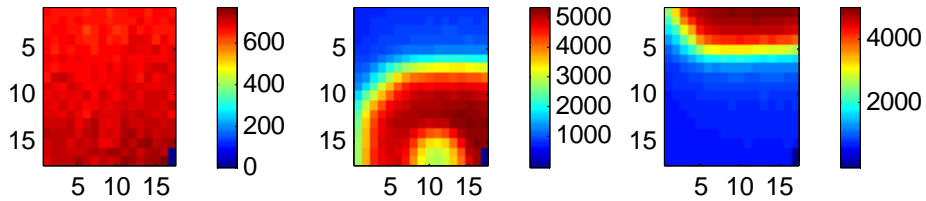
**(Celeste) Sixthscan\_5V\_THL323\_quarter\_PixelScan75um2\_5um**

**5V-** Same scan as above, over 1/4 of a pixel, THL is 323, high, close to the 15keV peak.

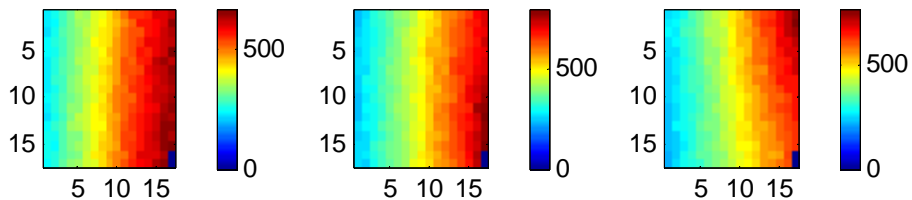
1st (Col,Row)=(119,155)    4th (Col,Row)=(119,156)    6th (Col,Row)=(119,157)



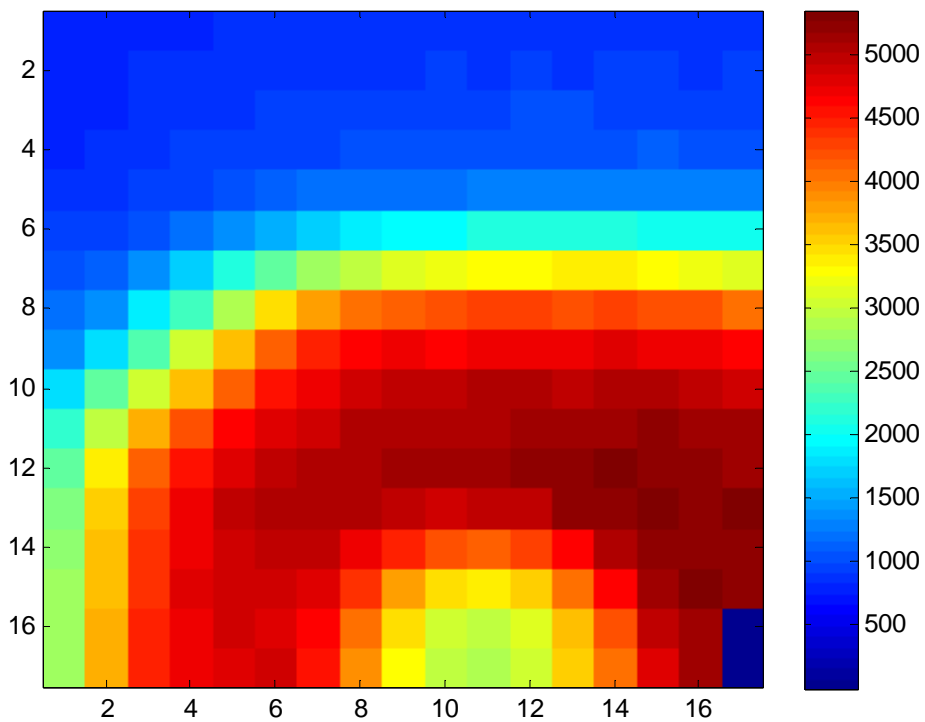
2nd (Col,Row)=(120,155) PixelMap (Col,Row)=(120,156) 7th (Col,Row)=(120,157)



3rd (Col,Row)=(121,155)    5th (Col,Row)=(121,156)    8th (Col,Row)=(121,157)

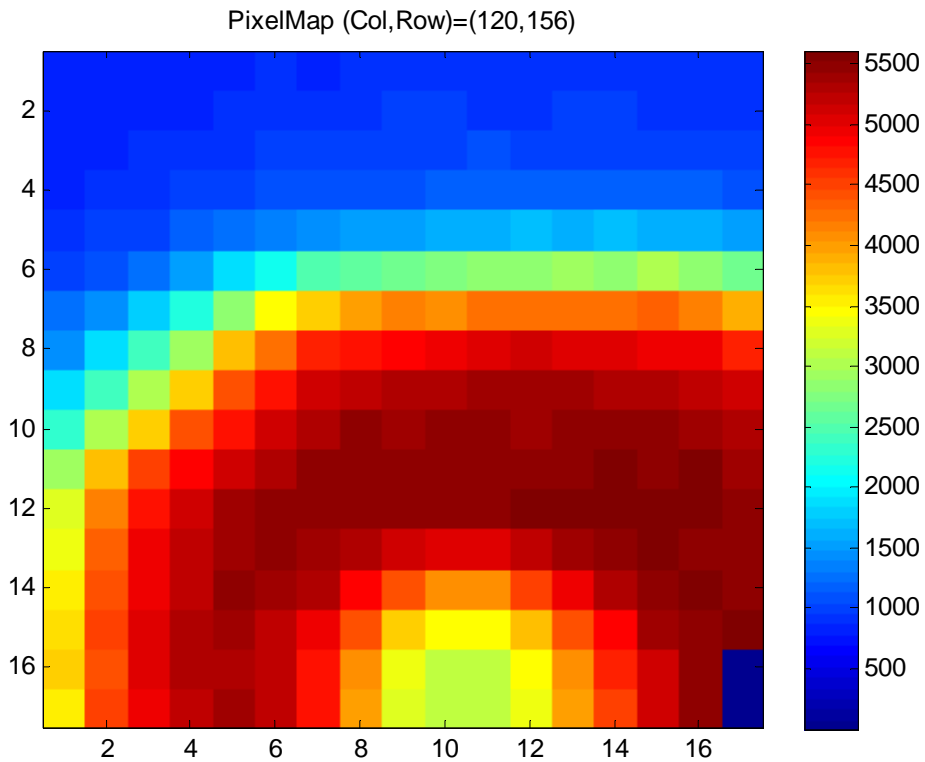
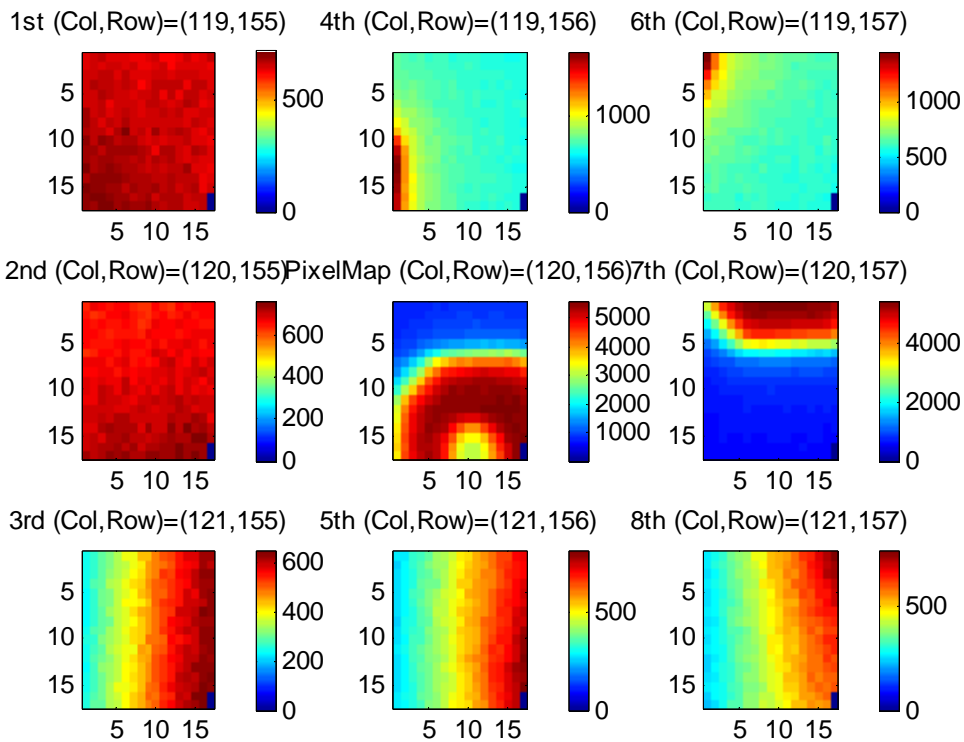


PixelMap (Col,Row)=(120,156)



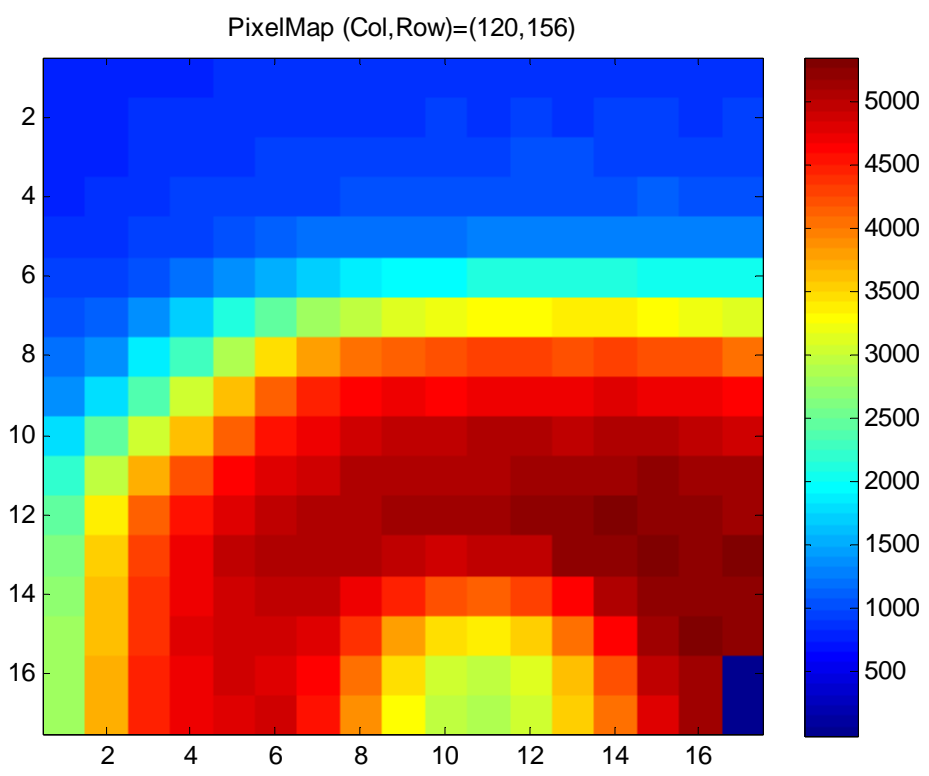
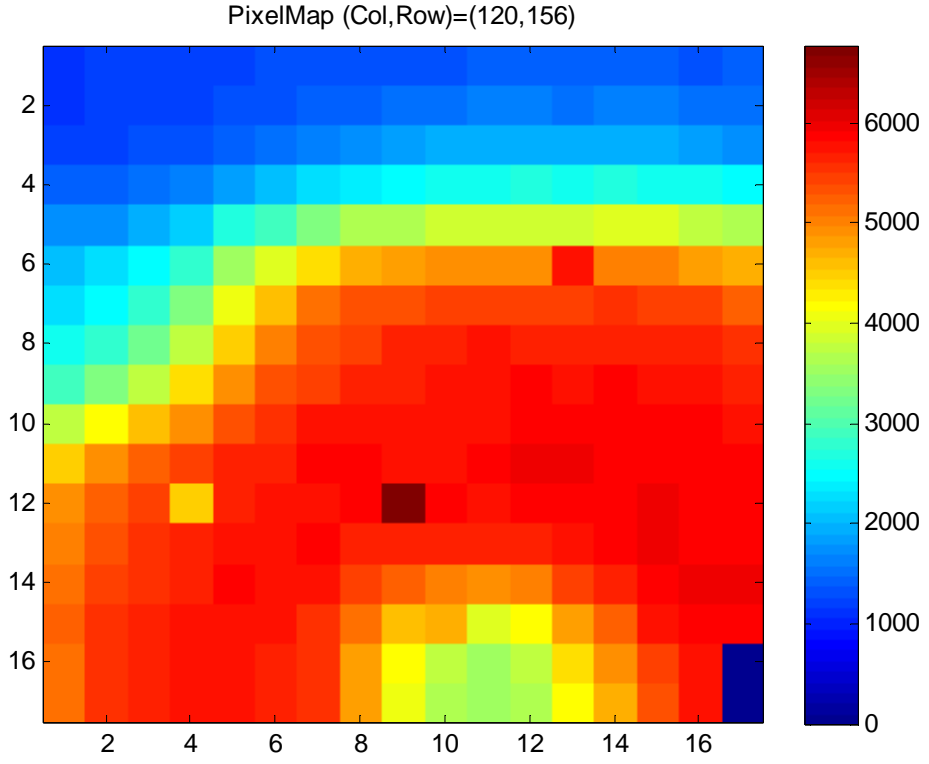
**(Celeste) Seventhscan\_20V\_THL323\_quarter\_PixelScan75um2\_5um**

**20V-** Same scan as above, over 1/4 of a pixel, THL is 323, high, close to the 15keV peak. This time V is 20 V





Comparison 5V bias, low threshold (up) and high threshold (down). **Need to rescale color code!**



Comparison 20V bias, low threshold (up) and high threshold (down). Again, need to rescale color

