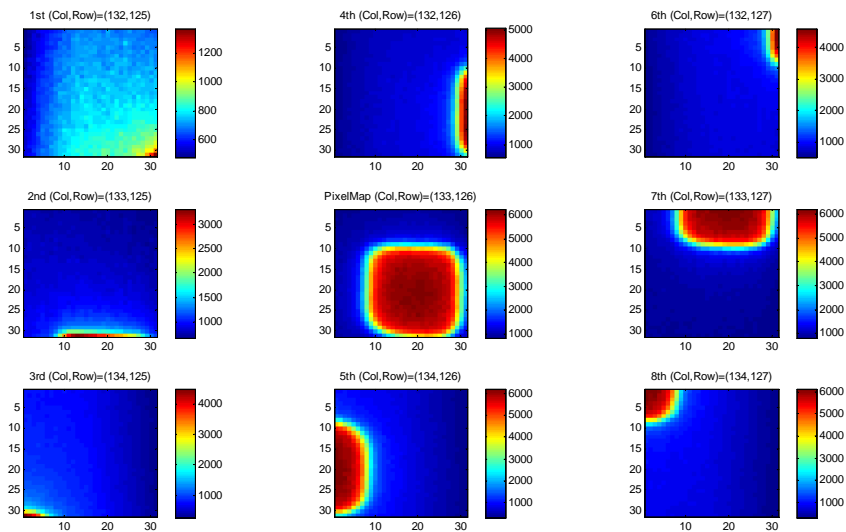
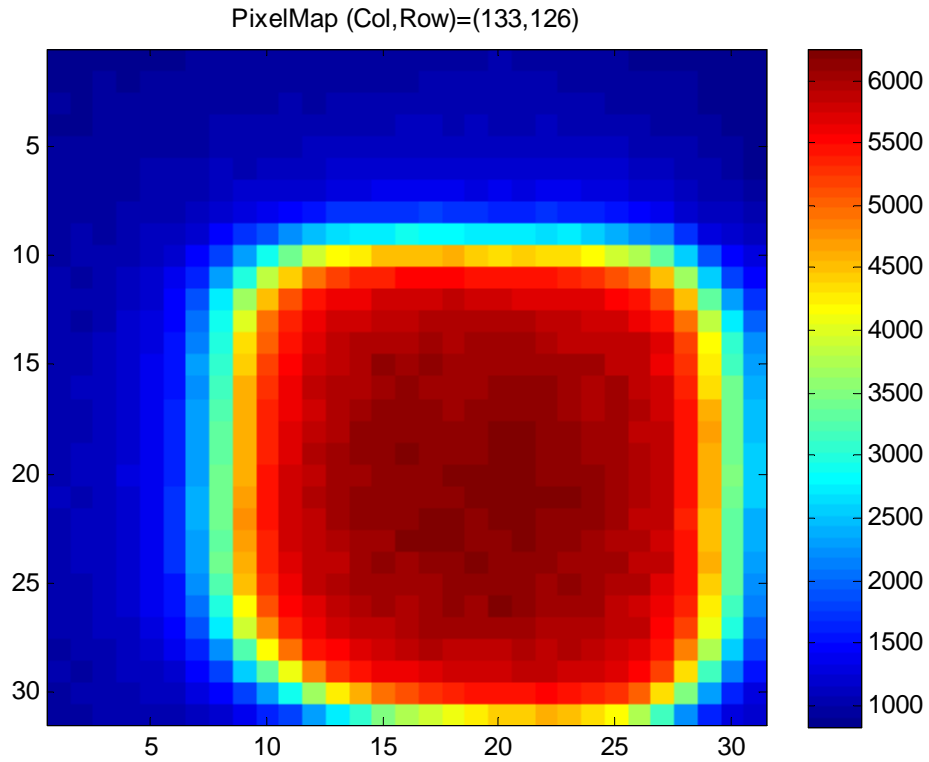
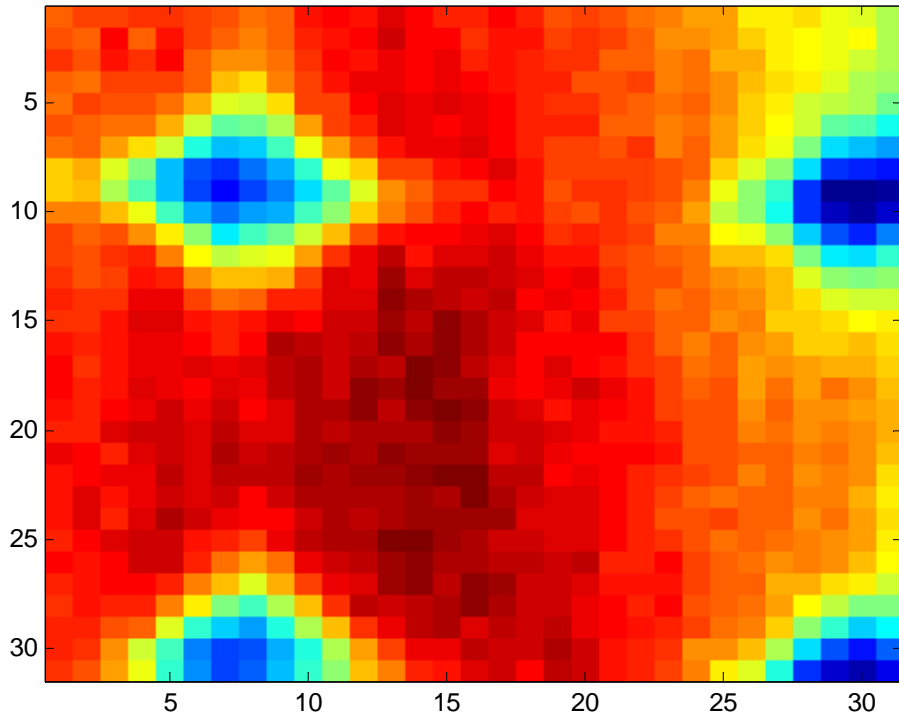


Pixel maps for Planar detector, N-bulk, MXR chip

V=100V, THL = 363 (50%)

```
NewFrame=load('1stPixelScan0015.txt');
```

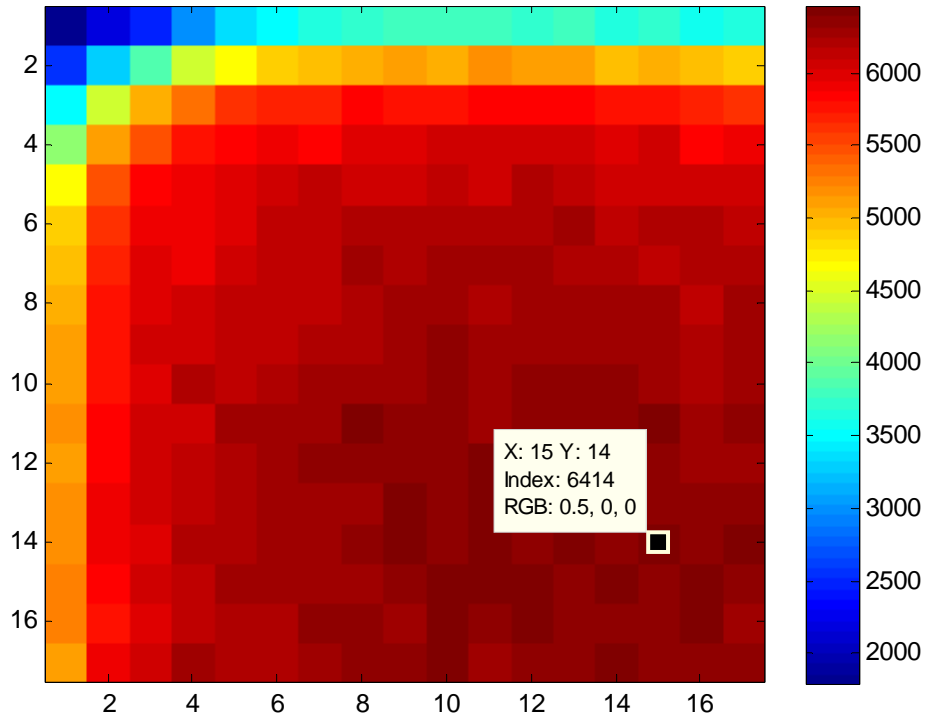


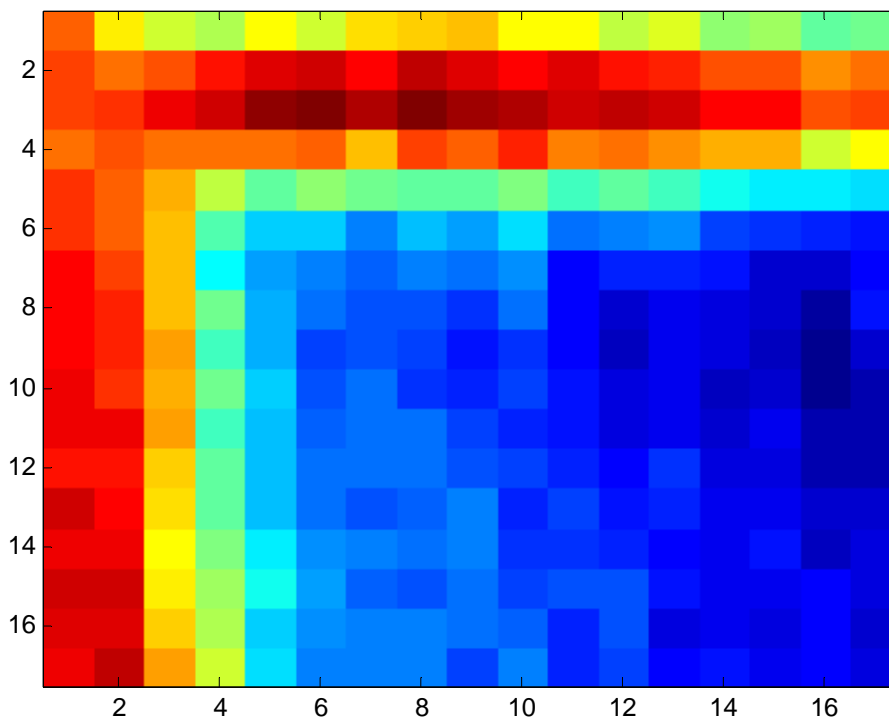
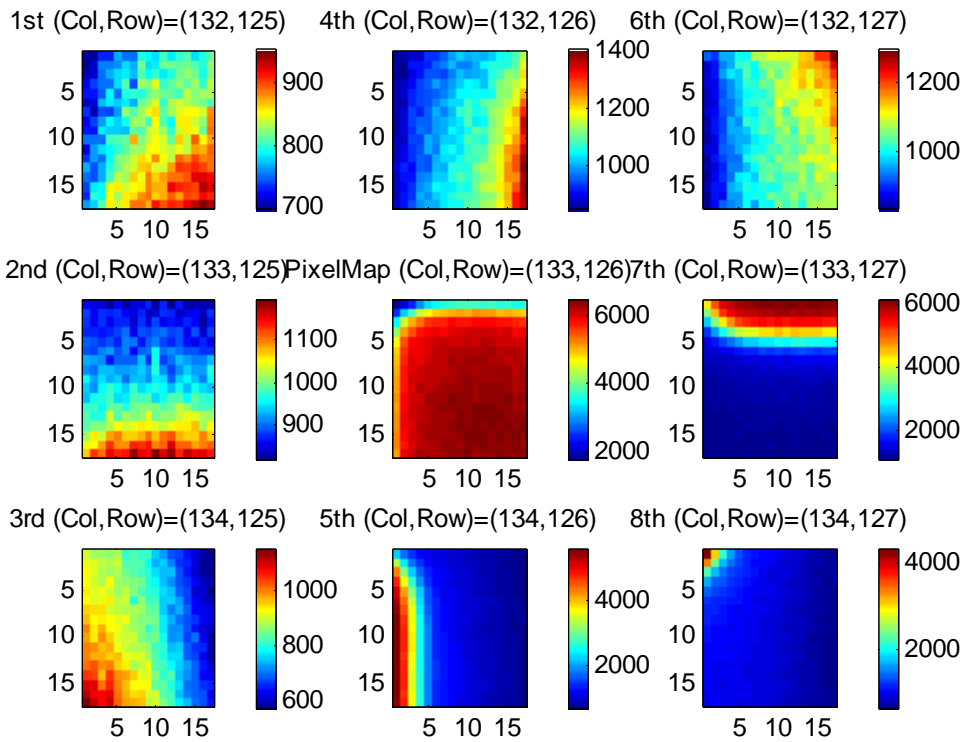


V=100V, THL = 385 (25%, low E)

2ndPixelScan_5aq_70ms_100V_THL385_quarter_PlanarN

PixelMap (Col,Row)=(133,126)



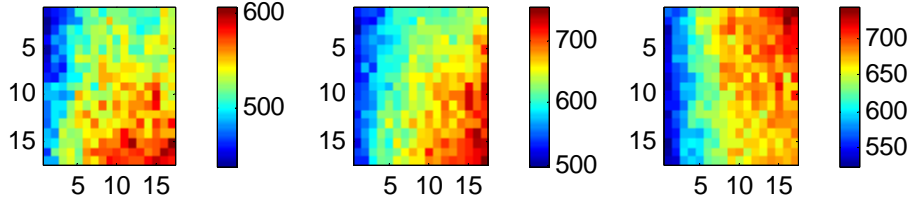


Need to add extra rows to the top to get full structure of pixel!

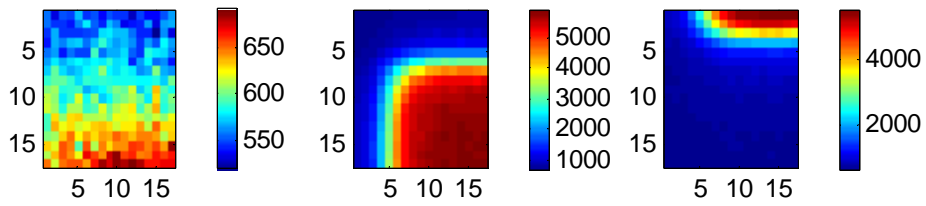
V=100V, THL = 340 (75%, high E)

4thPixelScan_5aq_70ms_100V_THL340_quarter_PlanarN_repeat

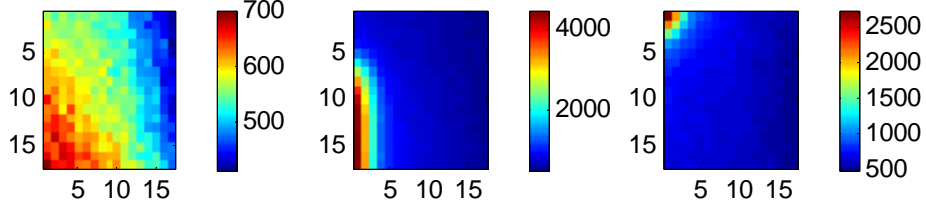
1st (Col,Row)=(132,125) 4th (Col,Row)=(132,126) 6th (Col,Row)=(132,127)



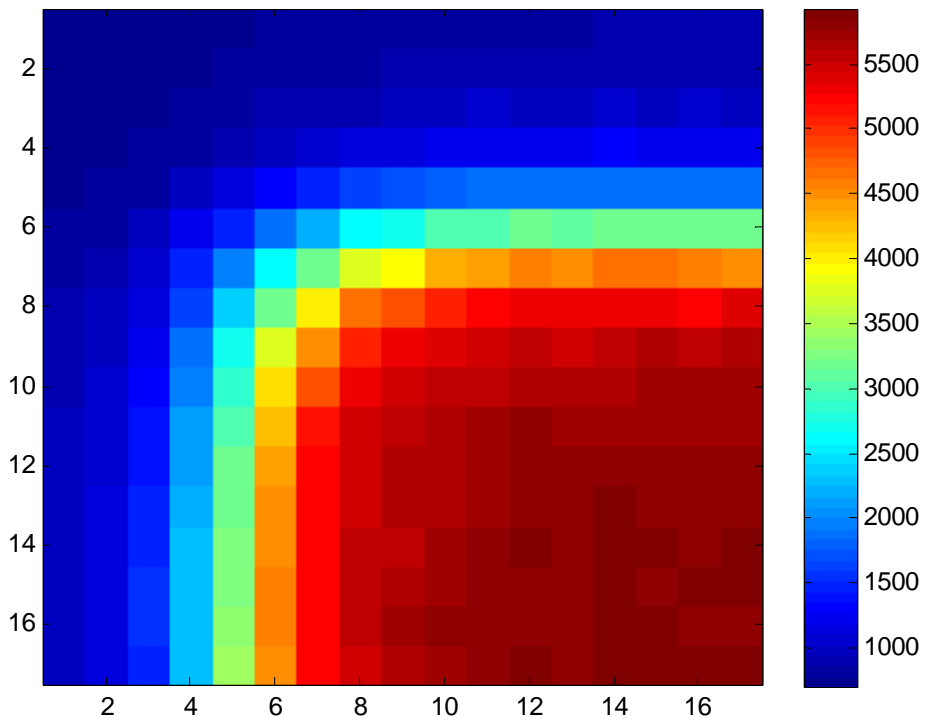
2nd (Col,Row)=(133,125) PixelMap (Col,Row)=(133,126) 7th (Col,Row)=(133,127)



3rd (Col,Row)=(134,125) 5th (Col,Row)=(134,126) 8th (Col,Row)=(134,127)



PixelMap (Col,Row)=(133,126)



This result was patched together from the scans:

2ndPixelScan_5aq_70ms_100V_THL385_quarter_PlanarN

5thPixelScan_5aq_70ms_100V_THL385_quarter_PlanarN_3rows

And

6thPixelScan_5aq_70ms_100V_THL385_quarter_PlanarN_3columns

Its what the file PixelMap_patching.m was used for and the results of the scan is saved as 'C:\TestBeamTeam2009\day4\PlanarN\Patched Map Of Pixel.txt' and 'C:\TestBeamTeam2009\day4\PlanarN\BiggerMapOfPixel

