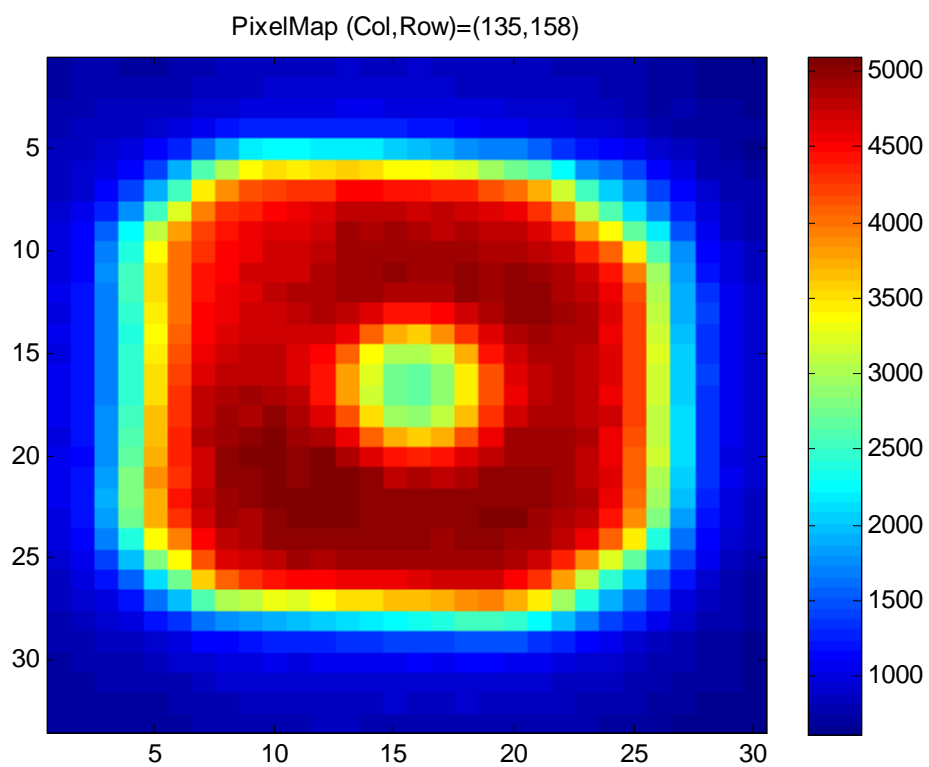


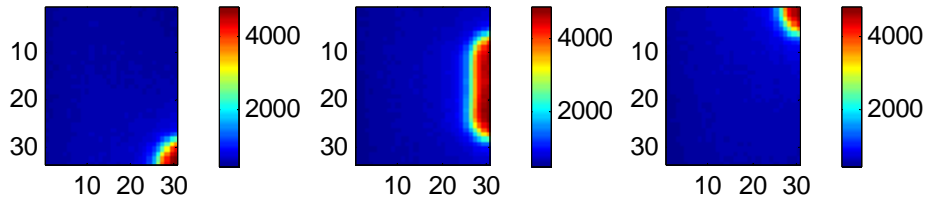
## Pixel scans on P-type 3D detector

**Full pixel, THL 440 (50% peak), 20V (below VFD)**

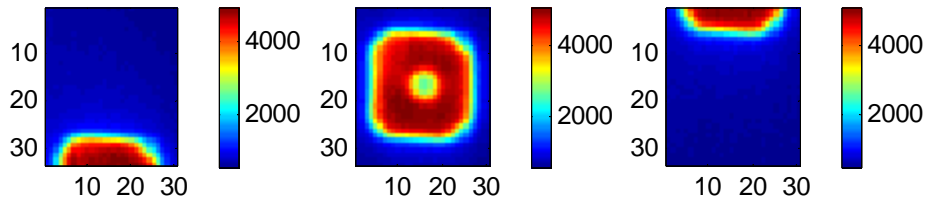
1stPixelScan\_5aq\_70ms\_20V



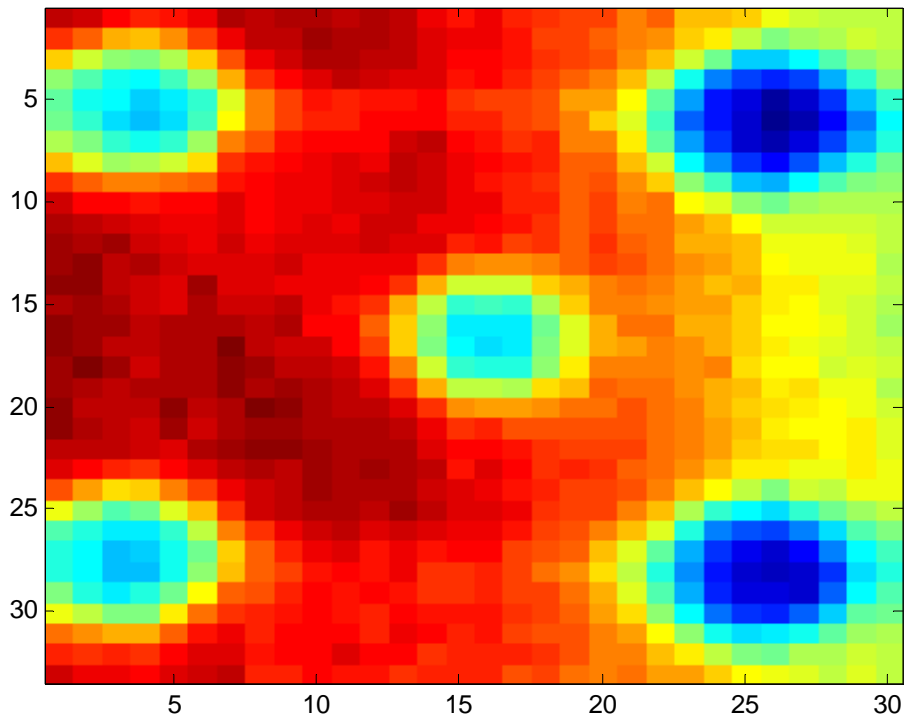
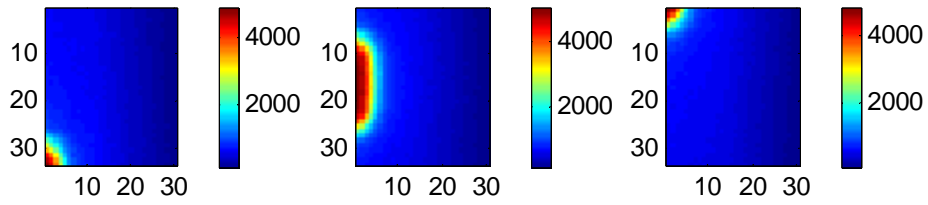
1st (Col,Row)=(134,157) 4th (Col,Row)=(134,158) 6th (Col,Row)=(134,159)



2nd (Col,Row)=(135,157) PixelMap (Col,Row)=(135,158) 7th (Col,Row)=(135,159)



3rd (Col,Row)=(136,157) 5th (Col,Row)=(136,158) 8th (Col,Row)=(136,159)

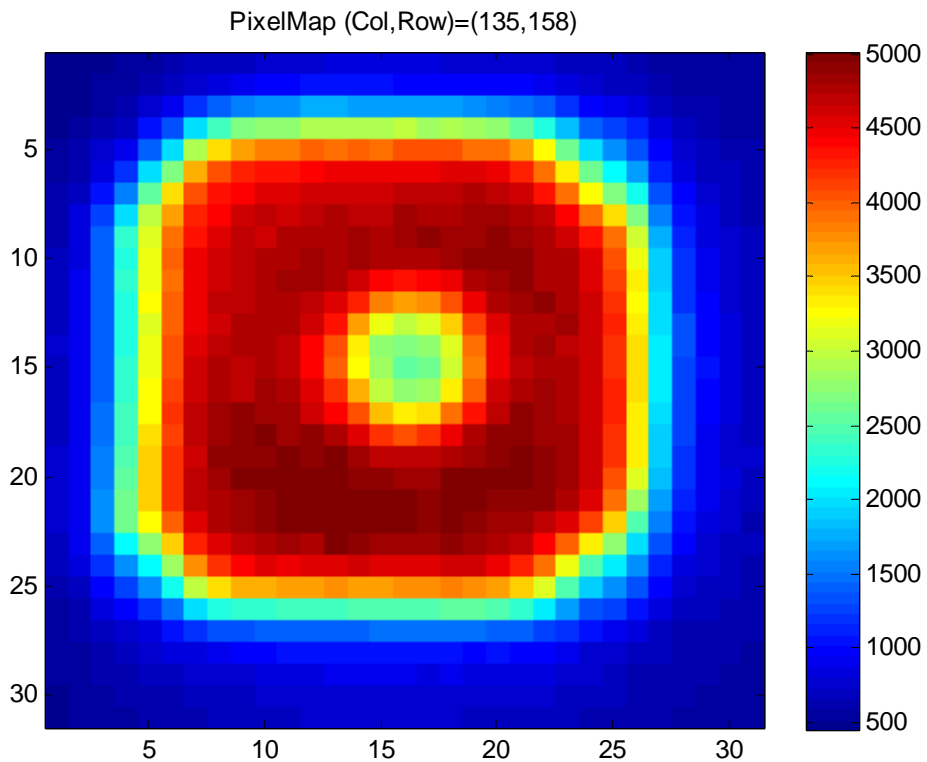
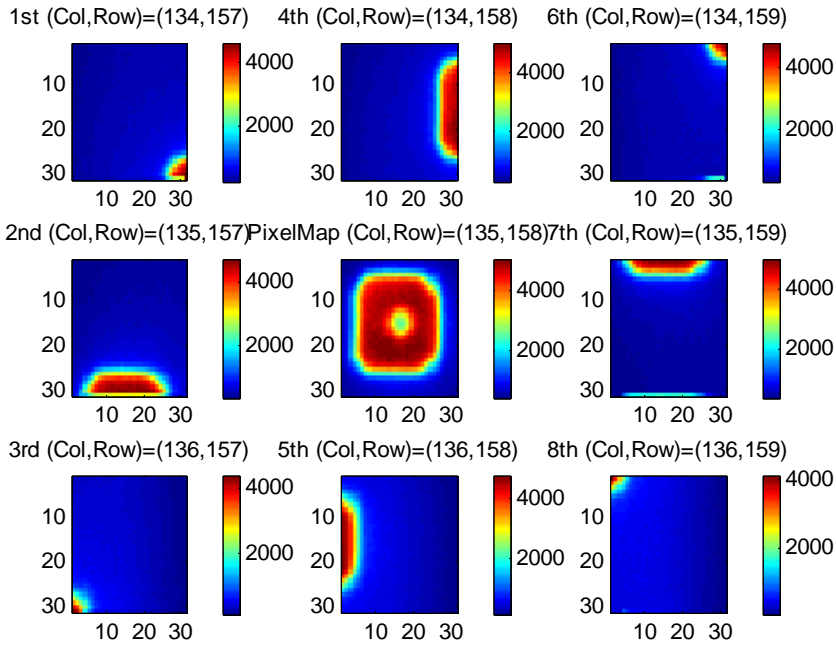


**Full pixel, THL 440 (50% peak), 40V (above VFD)**

4thPixelScan\_5aq\_70ms\_40V\_repeatX2

There were 2 acquisitions missing – 2 files missing from folder. Copied last datafile twice to run matlab. This means that 4thPixelScan4802.txt, 4803 and 4804 have the same data.

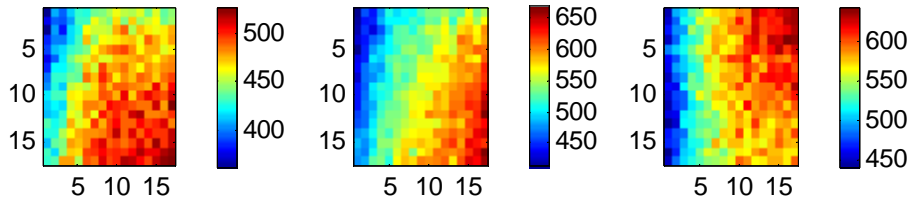
Pixelmaps look OK. Difficult to see where we missed the acquisition.



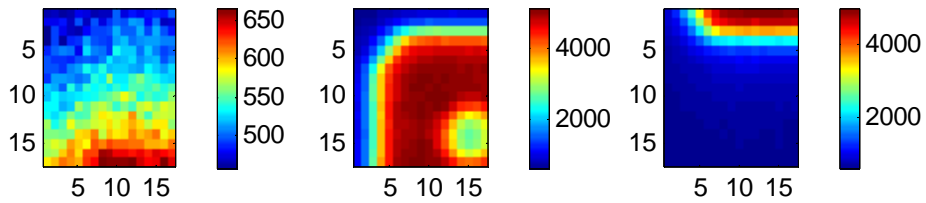
**1/4 pixel, THL 407 (low, 25% peak), 40V (above VFD)**

5thPixelScan\_5aq\_70ms\_40V\_THL407\_quarter\_3DP

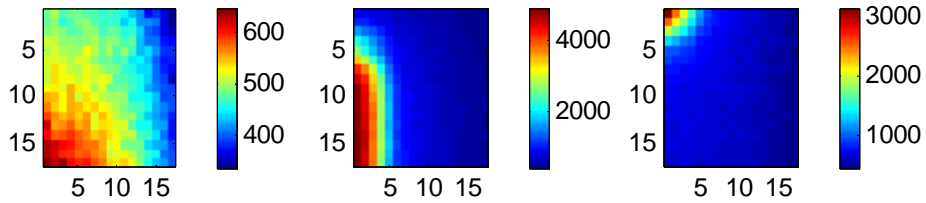
1st (Col,Row)=(134,157)    4th (Col,Row)=(134,158)    6th (Col,Row)=(134,159)



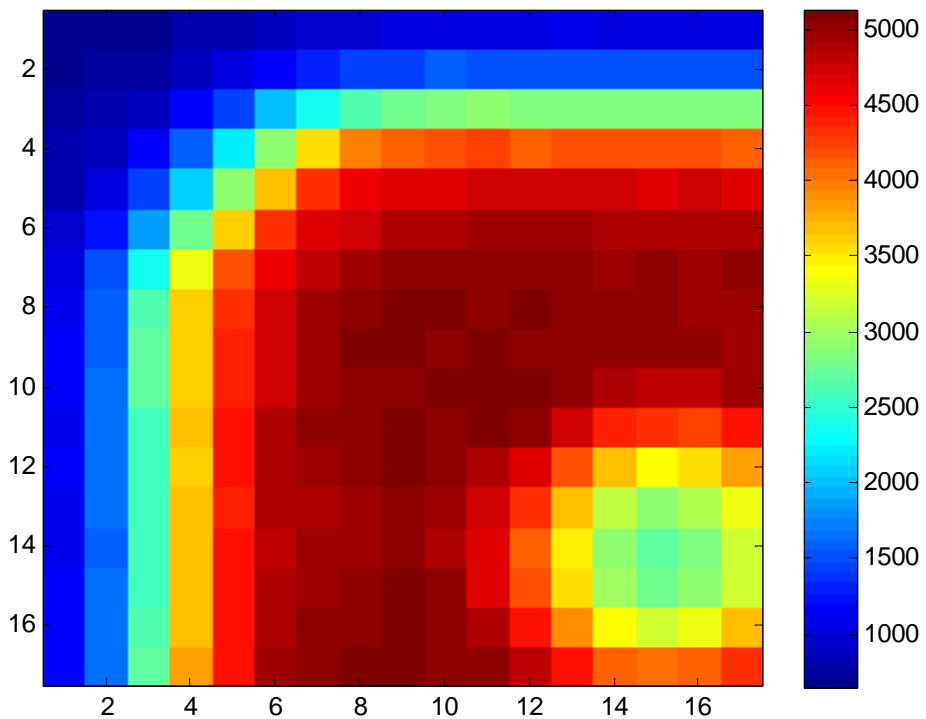
2nd (Col,Row)=(135,157) PixelMap (Col,Row)=(135,158) 7th (Col,Row)=(135,159)



3rd (Col,Row)=(136,157)    5th (Col,Row)=(136,158)    8th (Col,Row)=(136,159)



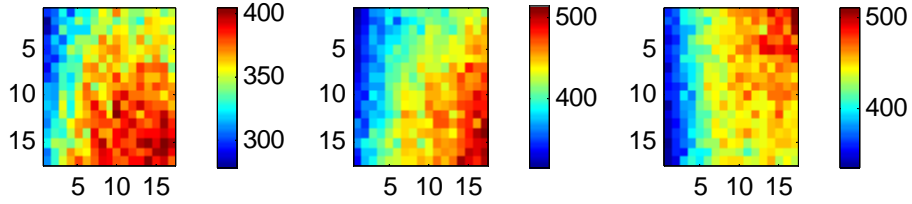
PixelMap (Col,Row)=(135,158)



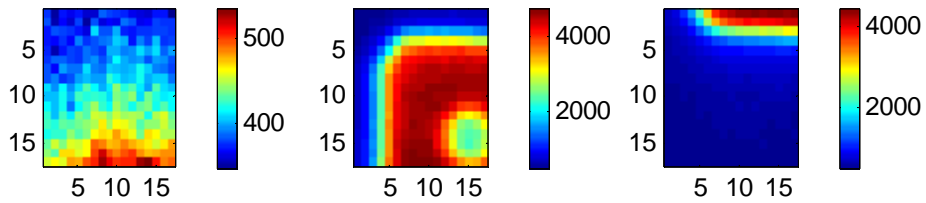
**1/4 pixel, THL 472 (high, 75% peak), 40V (above VFD)**

6thPixelScan\_5aq\_70ms\_40V\_THL472\_quarter\_3DP

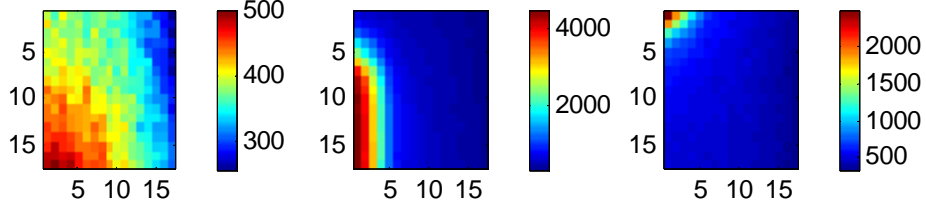
1st (Col,Row)=(134,157) 4th (Col,Row)=(134,158) 6th (Col,Row)=(134,159)



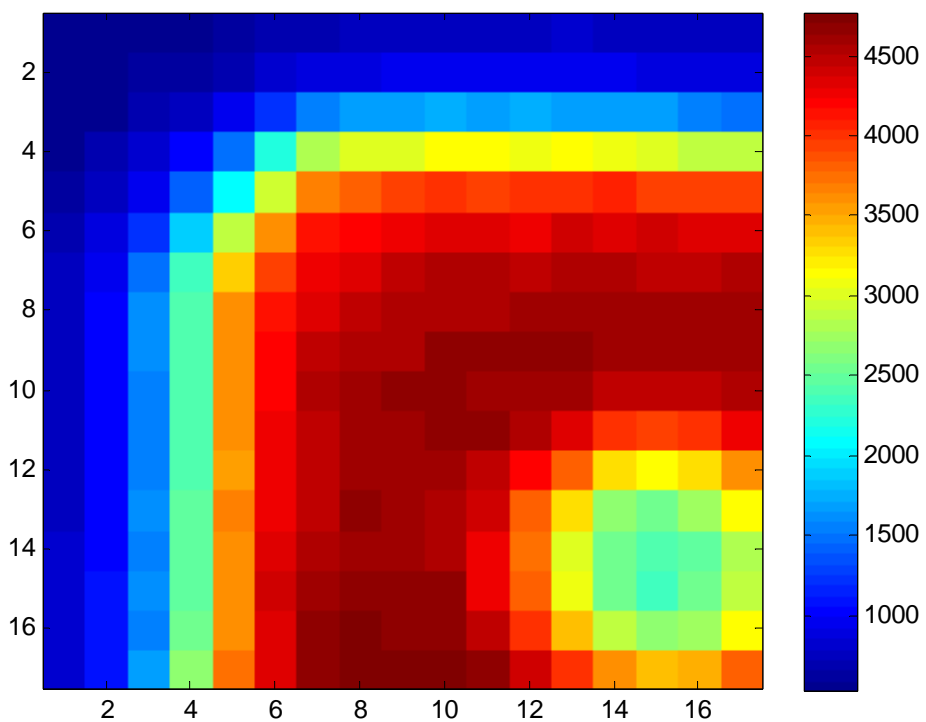
2nd (Col,Row)=(135,157) PixelMap (Col,Row)=(135,158) 7th (Col,Row)=(135,159)



3rd (Col,Row)=(136,157) 5th (Col,Row)=(136,158) 8th (Col,Row)=(136,159)



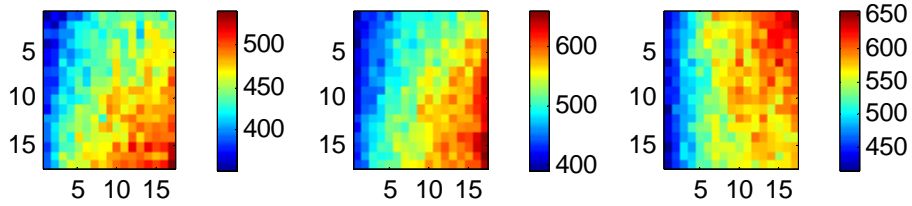
PixelMap (Col,Row)=(135,158)



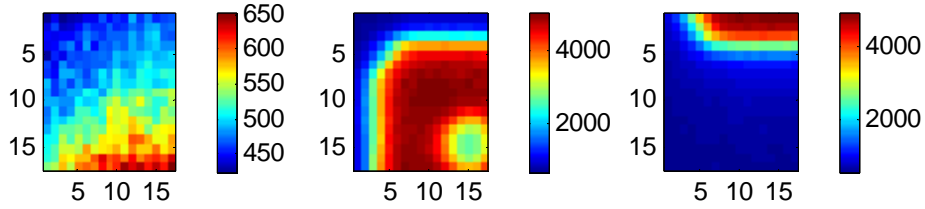
**1/4 pixel, THL 407 (low, 25% peak), 20V (below VFD)**

7thPixelScan\_5aq\_70ms\_20V\_THL407\_quarter\_3DP

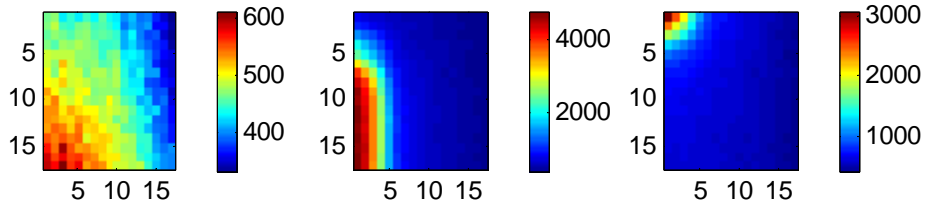
1st (Col,Row)=(134,157) 4th (Col,Row)=(134,158) 6th (Col,Row)=(134,159)



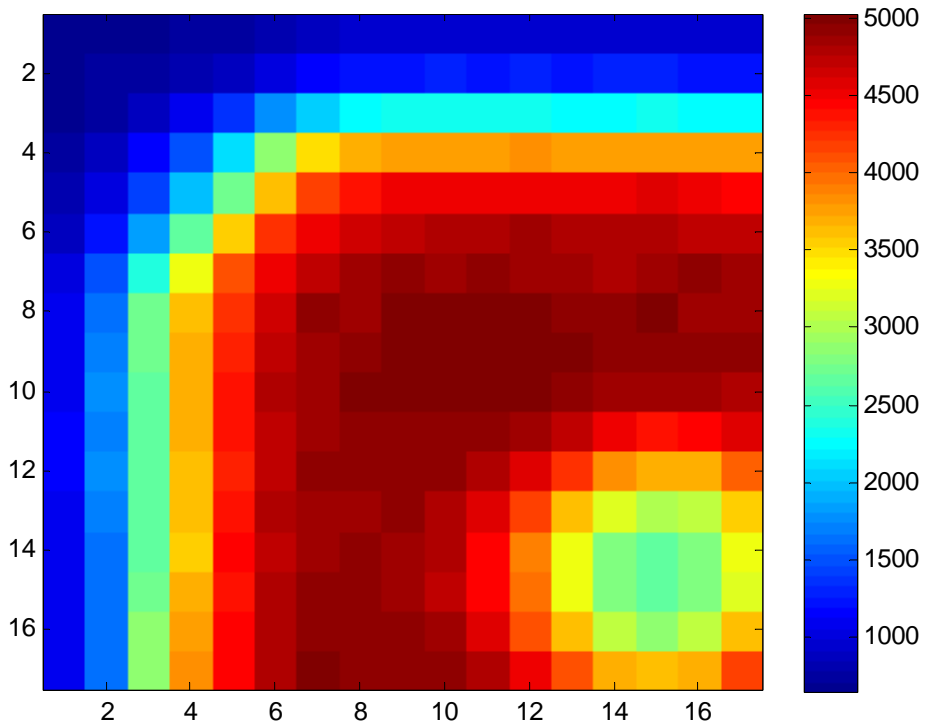
2nd (Col,Row)=(135,157) PixelMap (Col,Row)=(135,158) 7th (Col,Row)=(135,159)



3rd (Col,Row)=(136,157) 5th (Col,Row)=(136,158) 8th (Col,Row)=(136,159)



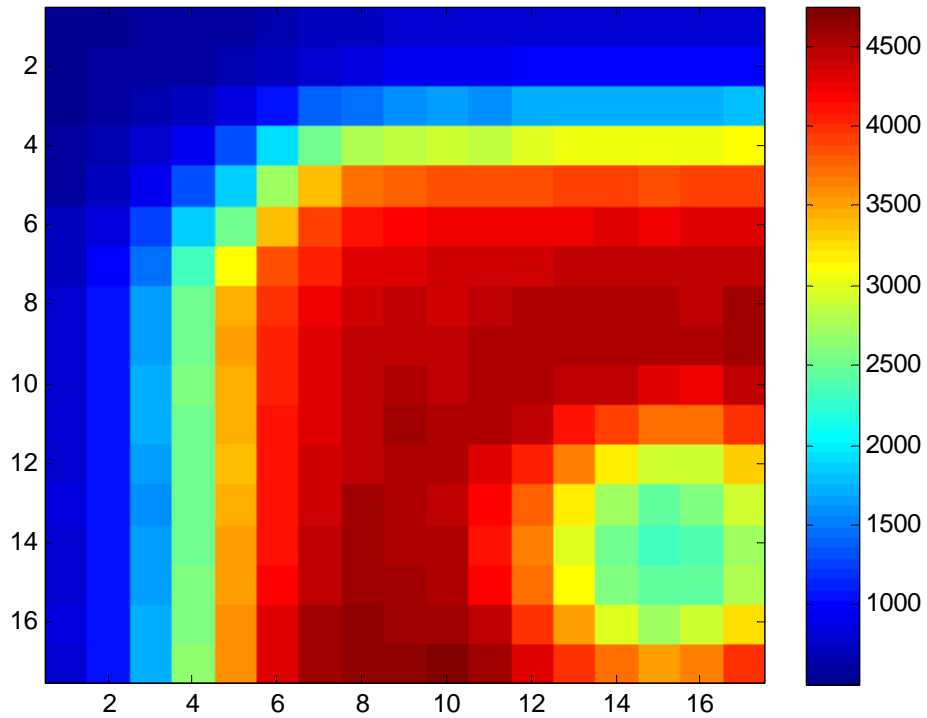
PixelMap (Col,Row)=(135,158)



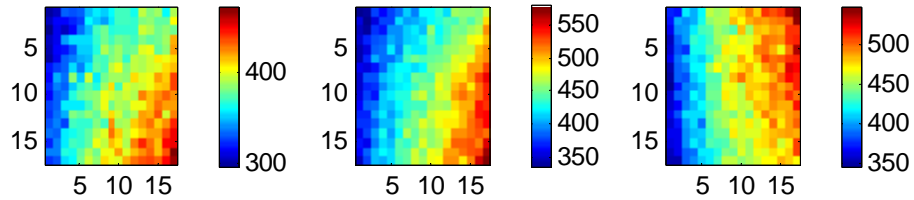
**1/4 pixel, THL 472 (high, 25% peak), 20V (below VFD)**

8thPixelScan\_5aq\_70ms\_20V\_THL472\_quarter\_3DP

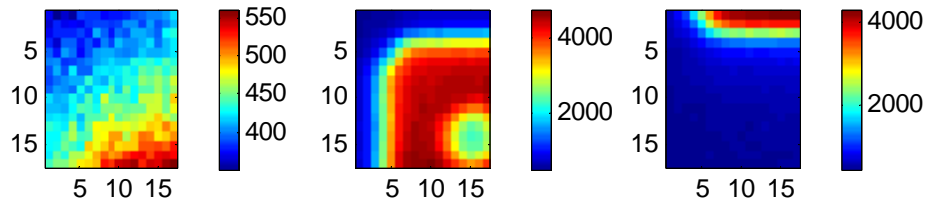
PixelMap (Col,Row)=(135,158)



1st (Col,Row)=(134,157)    4th (Col,Row)=(134,158)    6th (Col,Row)=(134,159)



2nd (Col,Row)=(135,157) PixelMap (Col,Row)=(135,158) 7th (Col,Row)=(135,159)



3rd (Col,Row)=(136,157)    5th (Col,Row)=(136,158)    8th (Col,Row)=(136,159)

