

1st Report on the analysis status of the 3D test beam experiment at Diamond in May 2009

03/06/09

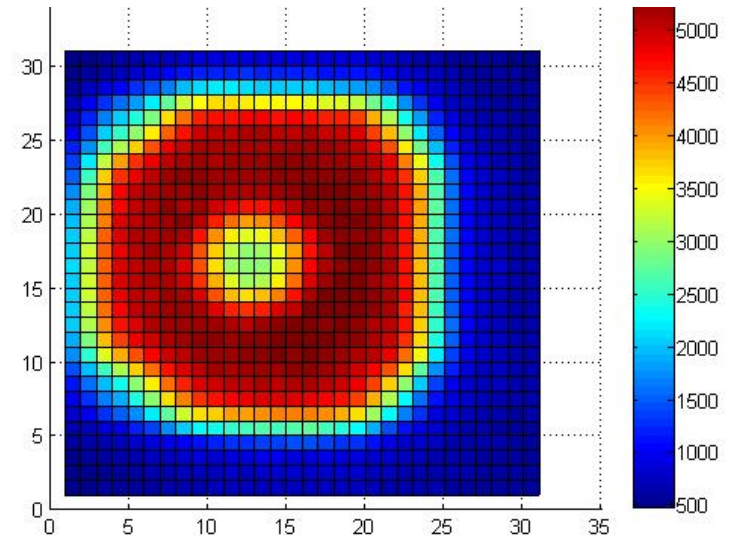
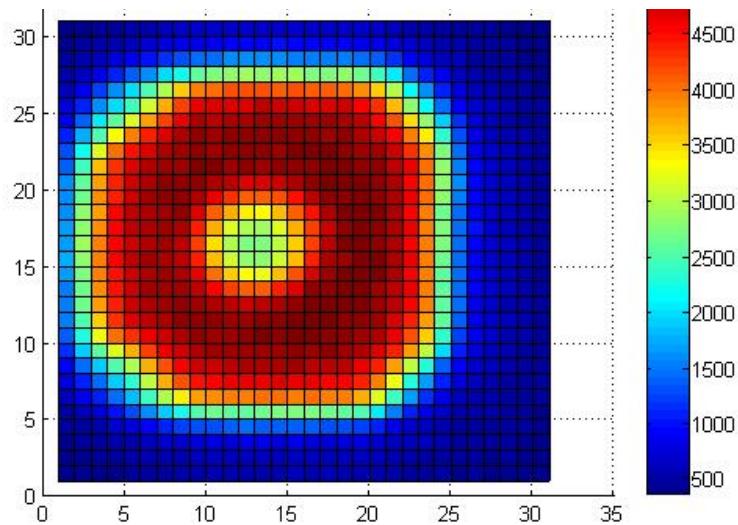
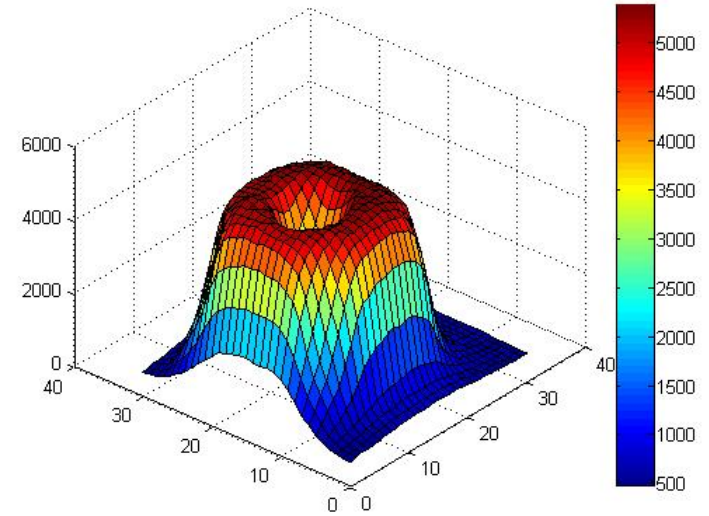
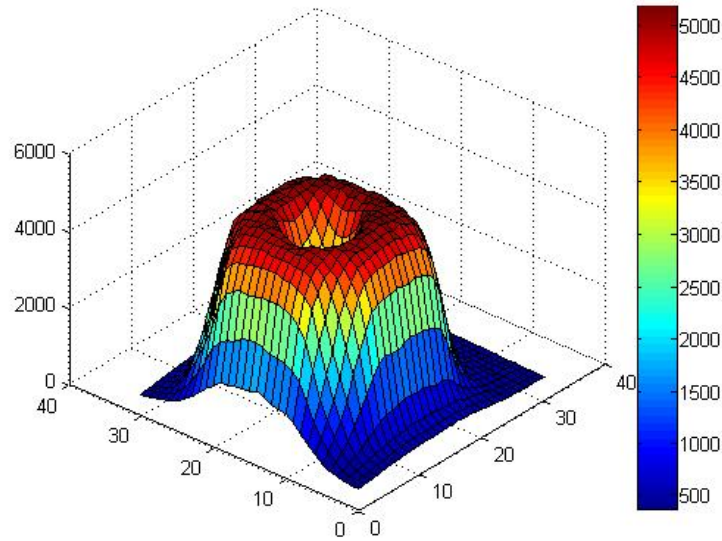
E.N. Gimenez

The comments related to each slide can be seen in the space that Powerpoint has available down to each slide for notes

J03-W0026 MXR3D n-bulk

THL	345 (50%)
Voltage (V)	5

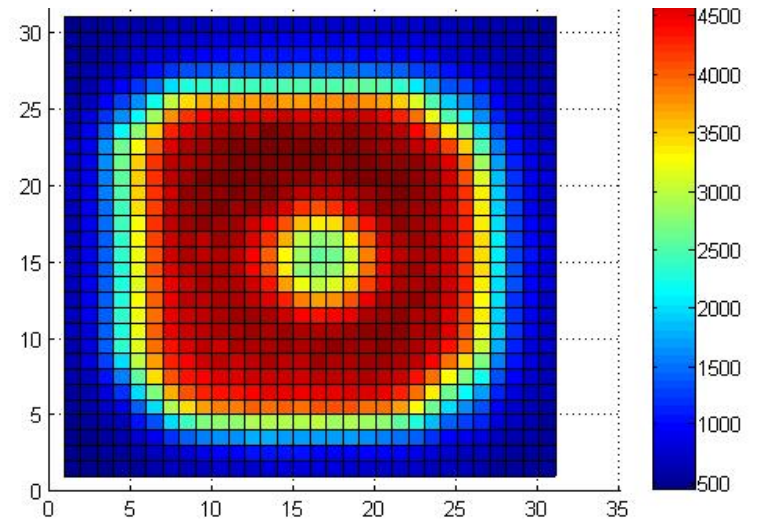
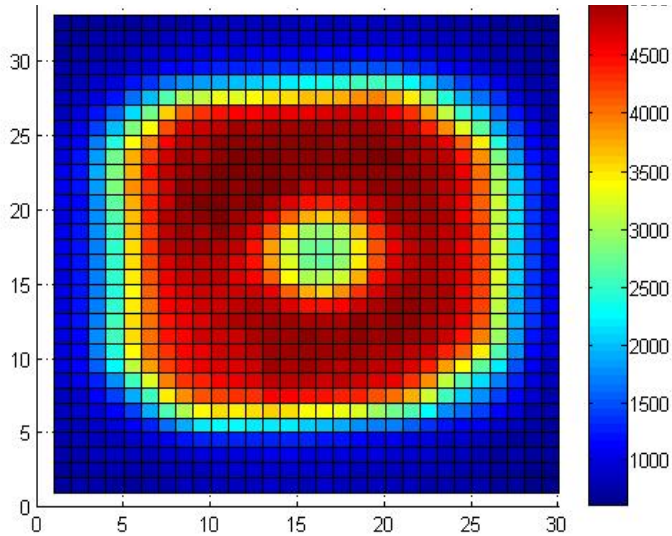
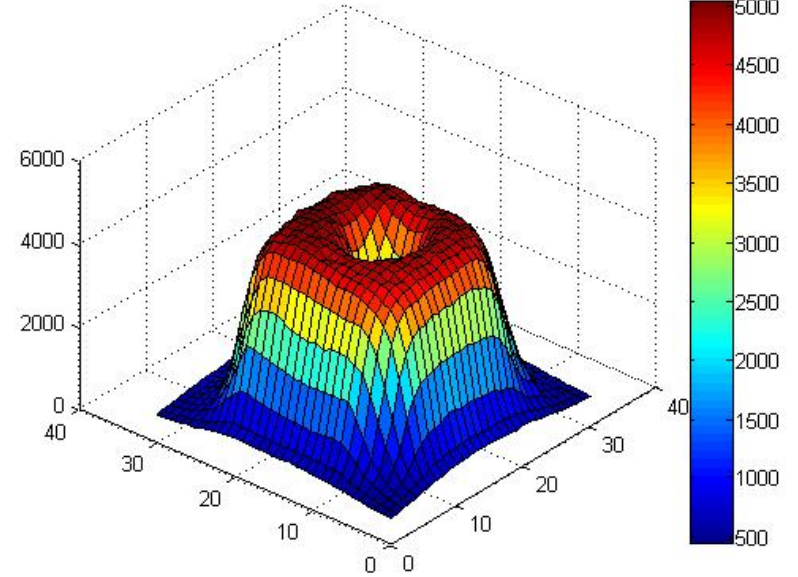
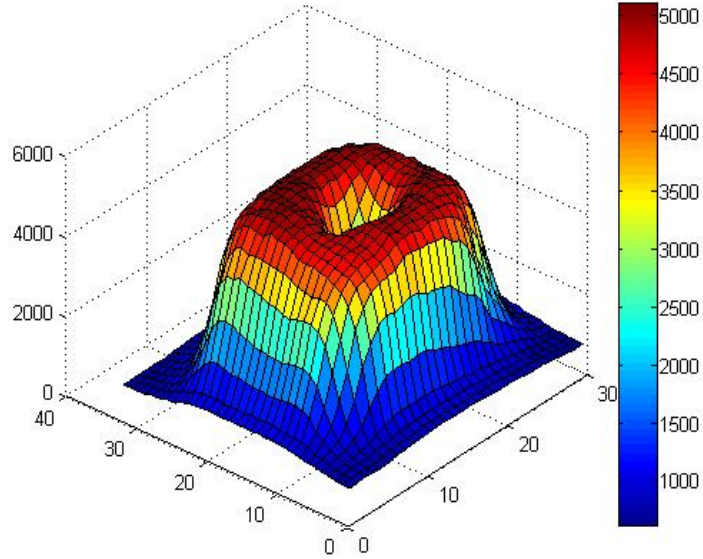
THL	345 (50%)
Voltage (V)	20



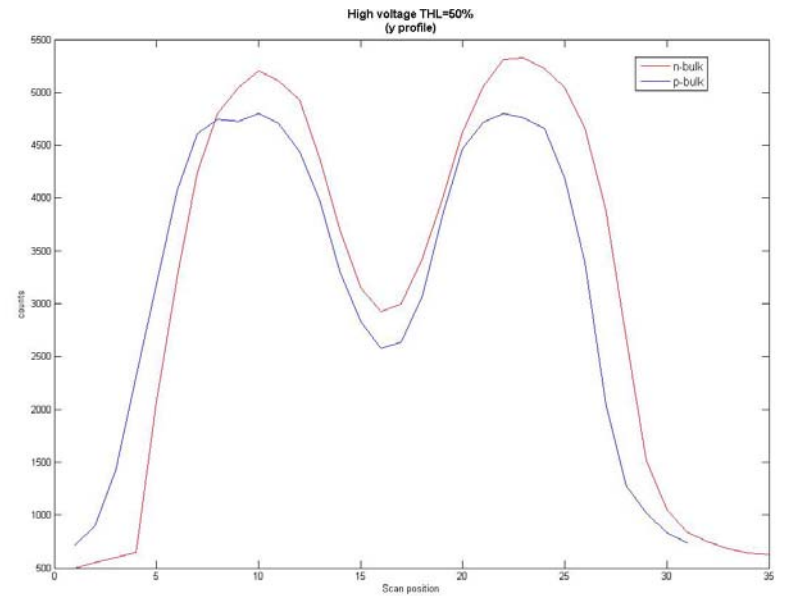
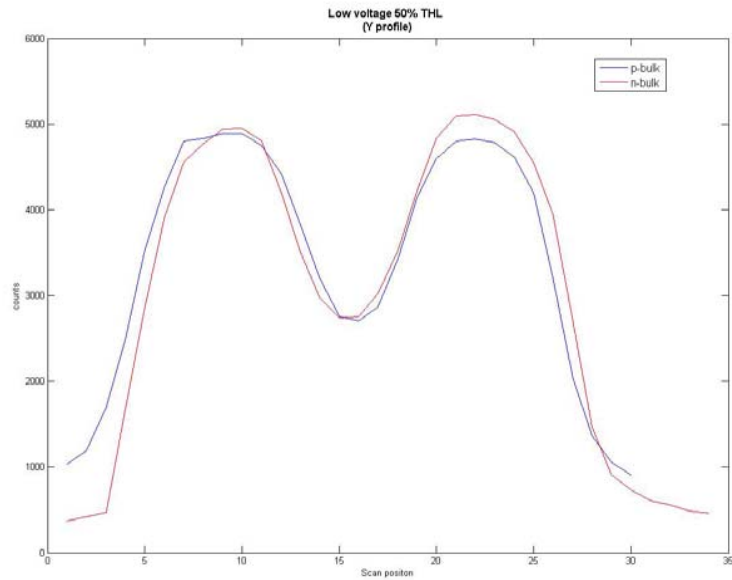
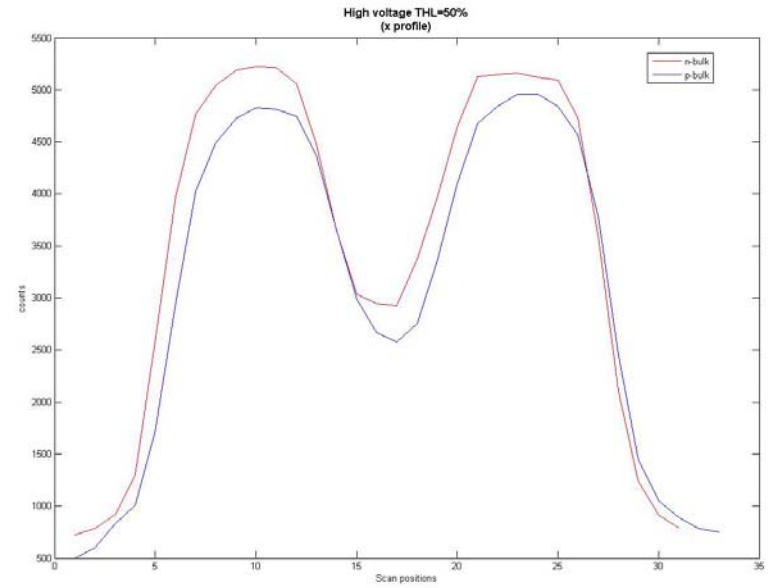
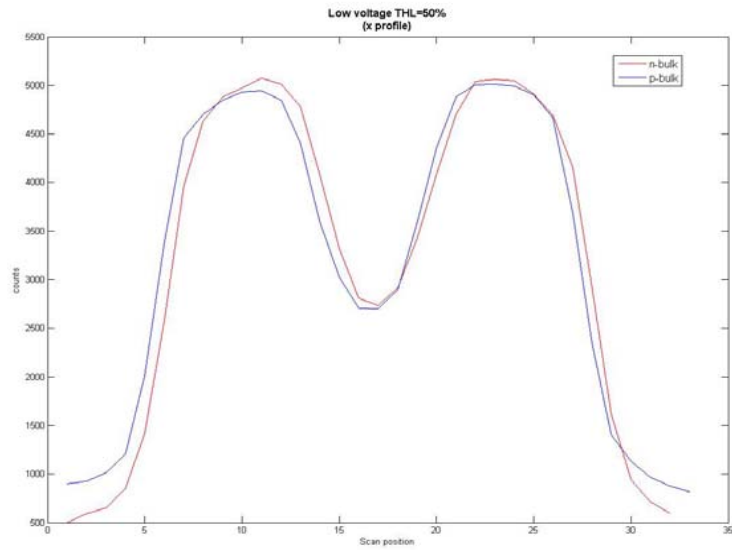
F09-W0015 TPX3D p-bulk

THL	440 (50%)
Voltage (V)	-20

THL	440 (50%)
Voltage (V)	-40



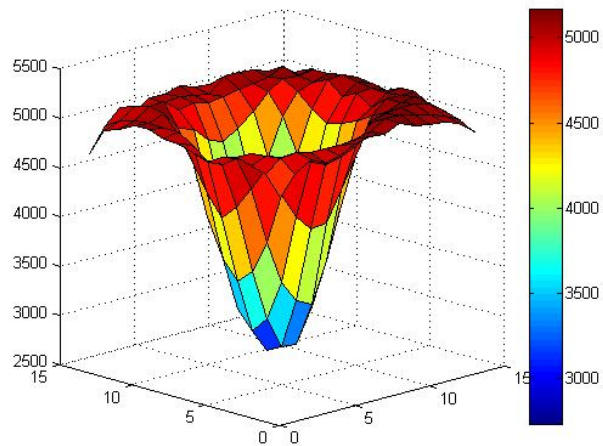
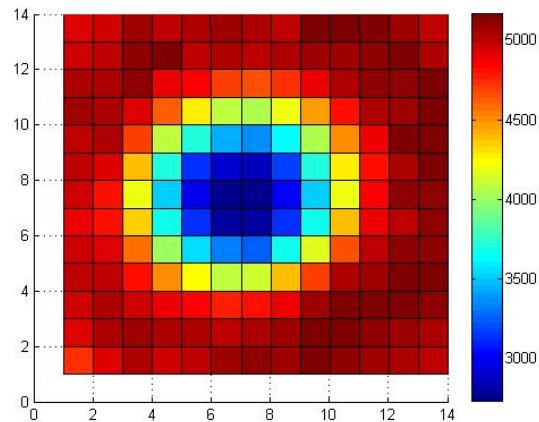
J03-W0026 MXR3D n-bulk compare to F09-W0015 TPX3D p-bulk



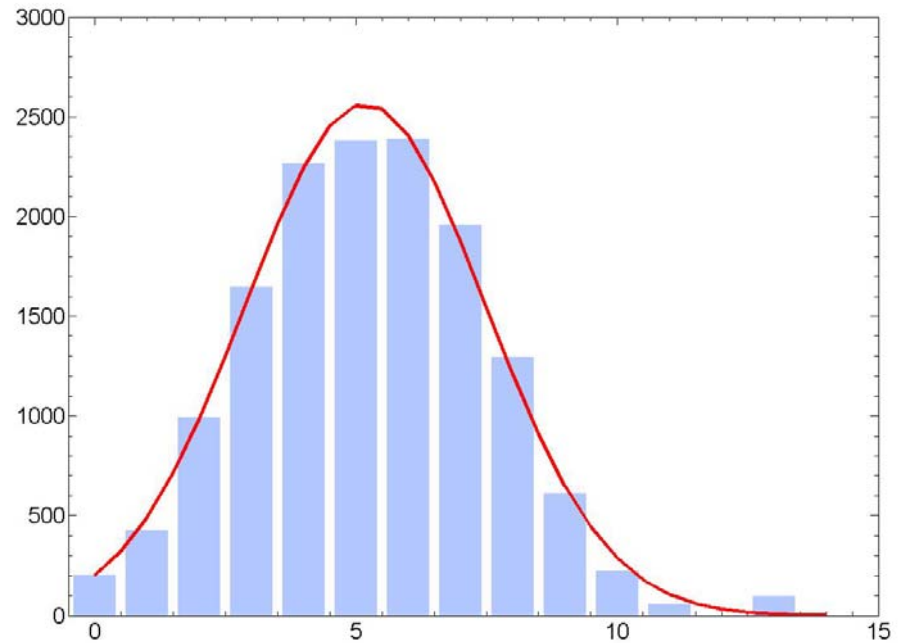
J03-W0026 MXR3D n-bulk

THL	345 (50%)
Voltage (V)	5

Selected data from (10:23,7:20)

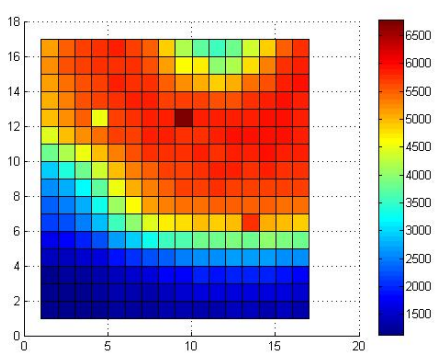


1D Gaussian fit of the profile

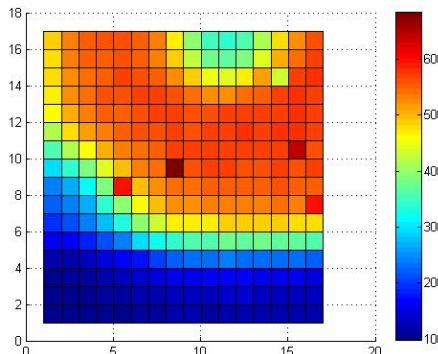


J03-W0026 MXR3D n-bulk

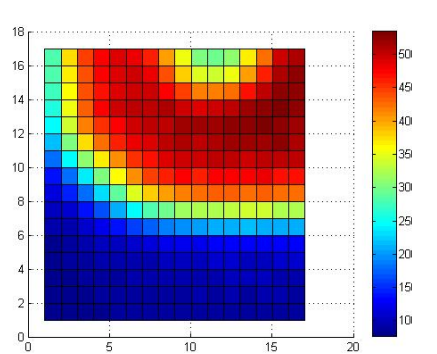
Code	25	24	26	27
THL	368 (25%)	368 (25%)	323 (75%)	323 (75%)
V	5	20	5	20



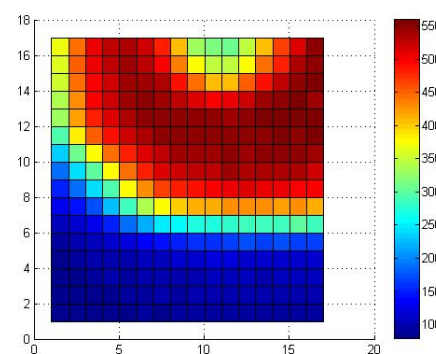
C25



C24



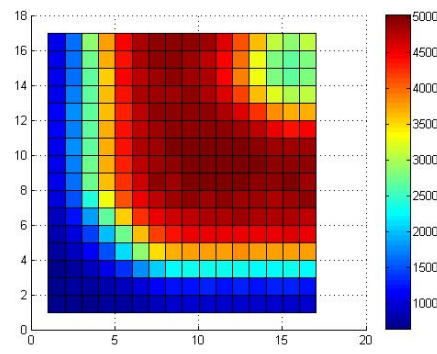
C26



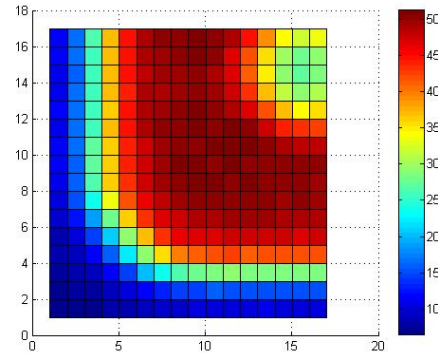
C27

F09-W0015 TPX3D p-bulk

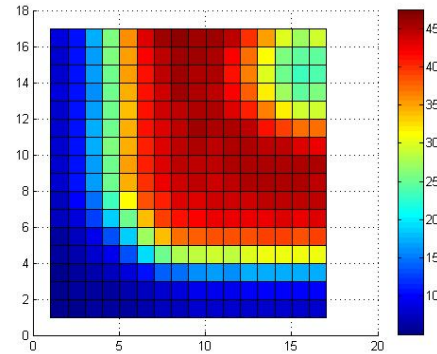
Code	37	35	38	36
THL	407 (25%)	407 (25%)	472 (75%)	472 (75%)
V	-20	-40	-20	-40



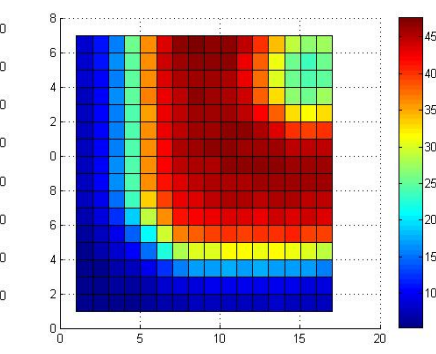
C37



C35

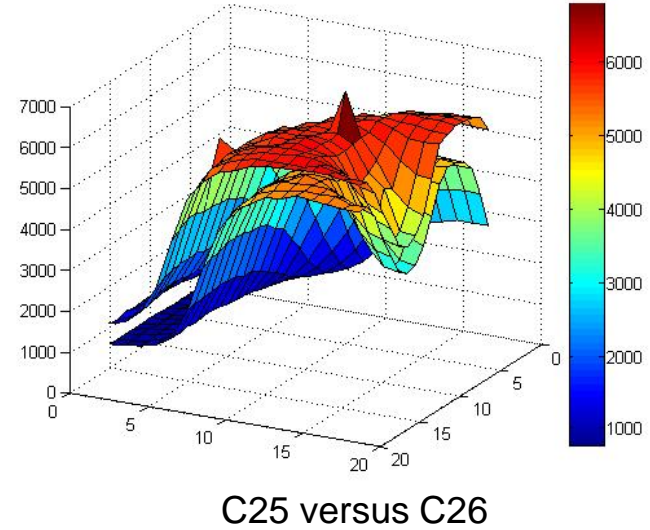
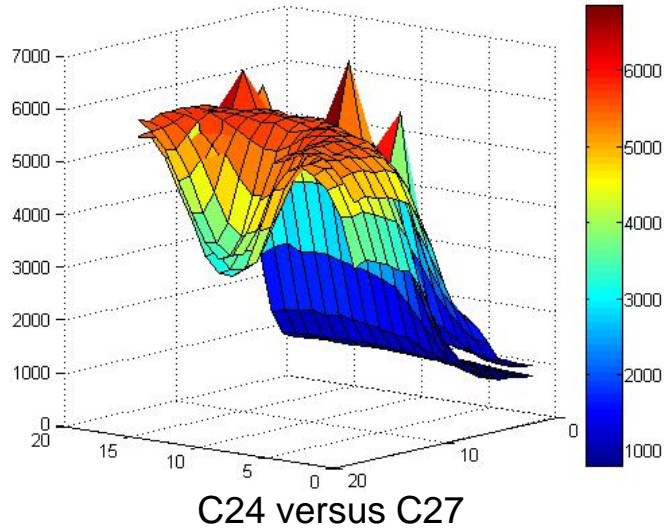


C38

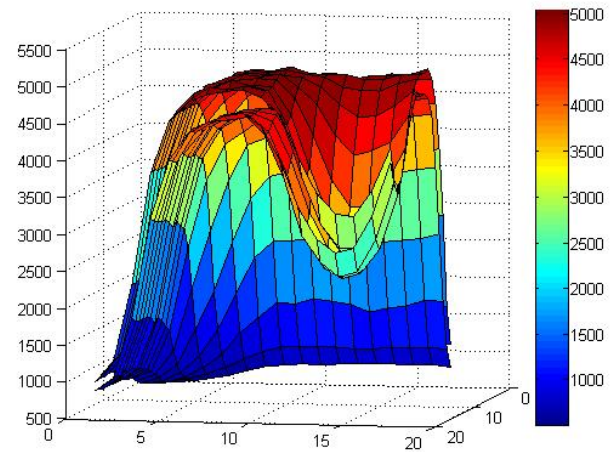
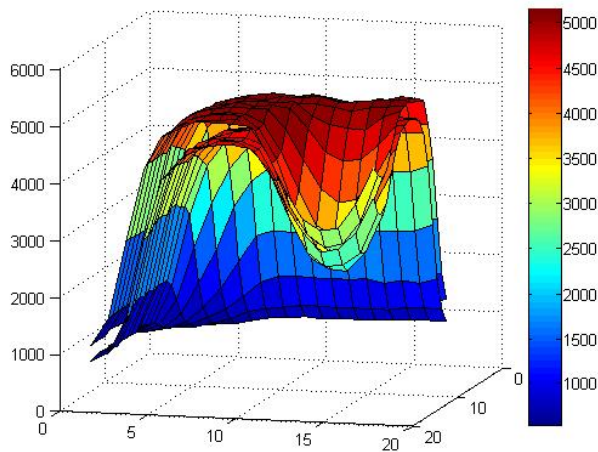


C36

J03-W0026 MXR3D n-bulk



F09-W0015 TPX3D p-bulk



Additional Information

Code	22			23			24			25			26			27		
J03-W0026 MXR3D n-bulk	1 st exp (156,120)*			2 nd exp (156,120)			3 rd exp (156,120)			4 th exp (156,120)			5 th exp (156,120)			6 th exp (156,120)		
THL	345 (50%)			345 (50%)			368 (25%)			368 (25%)			323 (75%)			323 (75%)		
Voltage (V)	5			20			20			5			5			20		
Max Event (i,j)	5169.6	11	15	5368.2	12	18	6846.6	9	8	6772.6	12	9	5353.8	12	14	5610.8	12	15
Min Event (i,j)	368.8	31	1	477.4	1	1	983.6	1	2	1133	1	1	771.8	1	1	796.6	1	1
CentralEl (i,j)	2735.4	16	12	2924.2	17	12	3362.0	17	11	3530.6	17	11	2884.8	17	11	3086	17	10
Reduced matrix	(10:23,7:20)			(10:23,7:20)			(10:17,6:16)			(11:17,5:17)			(11:17,5:17)			(11:17,5:17)		

Code	31			34			35			36			37			38		
F09-W0015 TPX3D p-bulk,	1 st exp (158,135)			2 nd exp (158,135)			3 rd exp (158,135)			4 th exp (158,135)			5 th exp (158,135)			6 th exp (158,135)		
THL	440 (50%)			440 (50%)			407 (25%)			472 (75%)			407 (25%)			472 (75%)		
Voltage (V)	-20			-40			-40			-40			-20			-20		
Max Event (i,j)	5099.8	22	12	5017.2	21	13	5132.6	10	10	4772.2	17	9	5029.0	10	9	4751.2	17	10
Min Event (i,j)	615.2	33	30	450.4	1	1	650.4	1	1	535.4	1	1	649.8	1	1	501	1	1
CentralEl (i,j)	2702.4	17	16	2577.6	15	16	2732	14	15	2389	15	15	2648.4	15	15	2348.2	14	15
Reduced matrix	(11:23,9:23)			(10:20,10:23)			(8:17,9:17)			(8:17,8:17)			(8:17,8:17)			(8:17,8:17)		